

# **Icetips PowerXP Theme**

# **Icetips XP-Theme**

**Copyright ©2002-2018 Icetips Alta LLC**

All rights reserved. No parts of this work may be reproduced in any form or by any means - graphic, electronic, or mechanical, including photocopying, recording, taping, or information storage and retrieval systems - without the written permission of the publisher.

Products that are referred to in this document may be either trademarks and/or registered trademarks of the respective owners. The publisher and the author make no claim to these trademarks.

While every precaution has been taken in the preparation of this document, the publisher and the author assume no responsibility for errors or omissions, or for damages resulting from the use of information contained in this document or from the use of programs and source code that may accompany it. In no event shall the publisher and the author be liable for any loss of profit or any other commercial damage caused or alleged to have been caused directly or indirectly by this document.

Published: October 2018

## **Publisher**

*Icetips Creative, Inc.*

## **Managing Editor**

*Arnor Baldvinsson*

# Table of Contents

Foreword	0
<b>Part I Power-XPTheme</b>	<b>2</b>
1 Welcome .....	2
2 Quickstart .....	3
Adding PowerXP Theme .....	3
3 Templates .....	4
Global template .....	4
Override template .....	8
Class methods .....	10
IsThemeActive.....	11
GetColor .....	11
UseLunaColors.....	12
AddControl.....	12
RemoveControl.....	12
IsSheetWizard.....	12
SetSheetWizard.....	13
SetColorStyle.....	13
SetWindowColor.....	13
SetAppFrameColor.....	13
SetListboxHovering.....	13
SetTabHeight.....	14
SetSheetDrawBackground.....	14
4 Misc .....	15
License Agreement .....	15
Frequently Asked Questions .....	16
Limitations .....	17
Contact Us .....	18
Installed files .....	18
Version history .....	19
<b>Index</b>	<b>0</b>

**Part**



**Chapter 1 - Power-XPTheme**

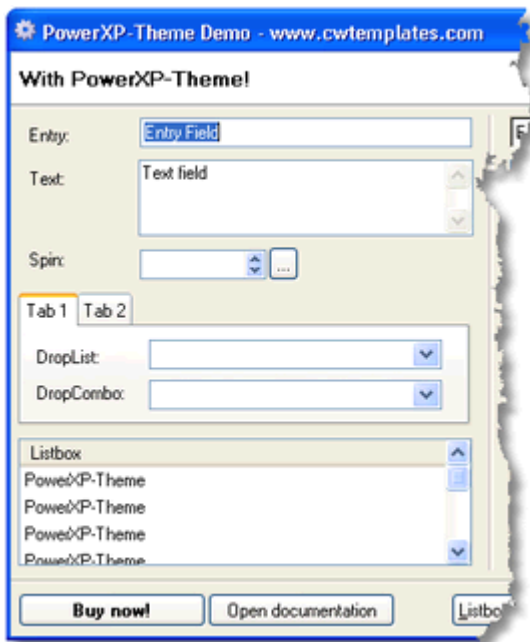
# 1 Power-XPTheme

## 1.1 Welcome

**PowerXP-Theme 2** adds Windows XP Themes to most of the controls that are not affected by Clarion6.x's manifest.

By adding just a single global template your applications will get a new, modern look.

PowerXP-Theme currently adds XP Themes to the following controls:



- ▶ Entry controls
- ▶ List boxes
- ▶ Drop lists
- ▶ Drop combos
- ▶ Spin boxes
- ▶ Sheets and tabs
- ▶ Edit-in-place controls
- ▶ AppFrame client-area
- ▶ Window background color

For a quick tutorial on how to use this template, look at the [Adding PowerXP Theme](#) section.

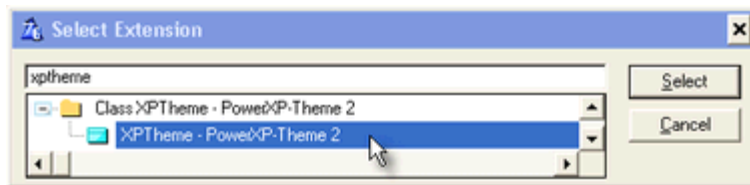
Note that Icetips Creative, Inc. took this product over from PowerOffice in Norway in December 2008. It is possible that there are some references to PowerOffice in this text or in the source codes. If you find references to PowerOffice, [please let us know](#).

## 1.2 Quickstart

### 1.2.1 Adding PowerXP Theme

**Quickstart**

To add PowerXP-Theme to your application, just add the global template "XPTheme → PowerXP-Theme 2".



That's it...

See [Global Template](#) for a brief explanation of the template settings.

### Multi-DLL considerations

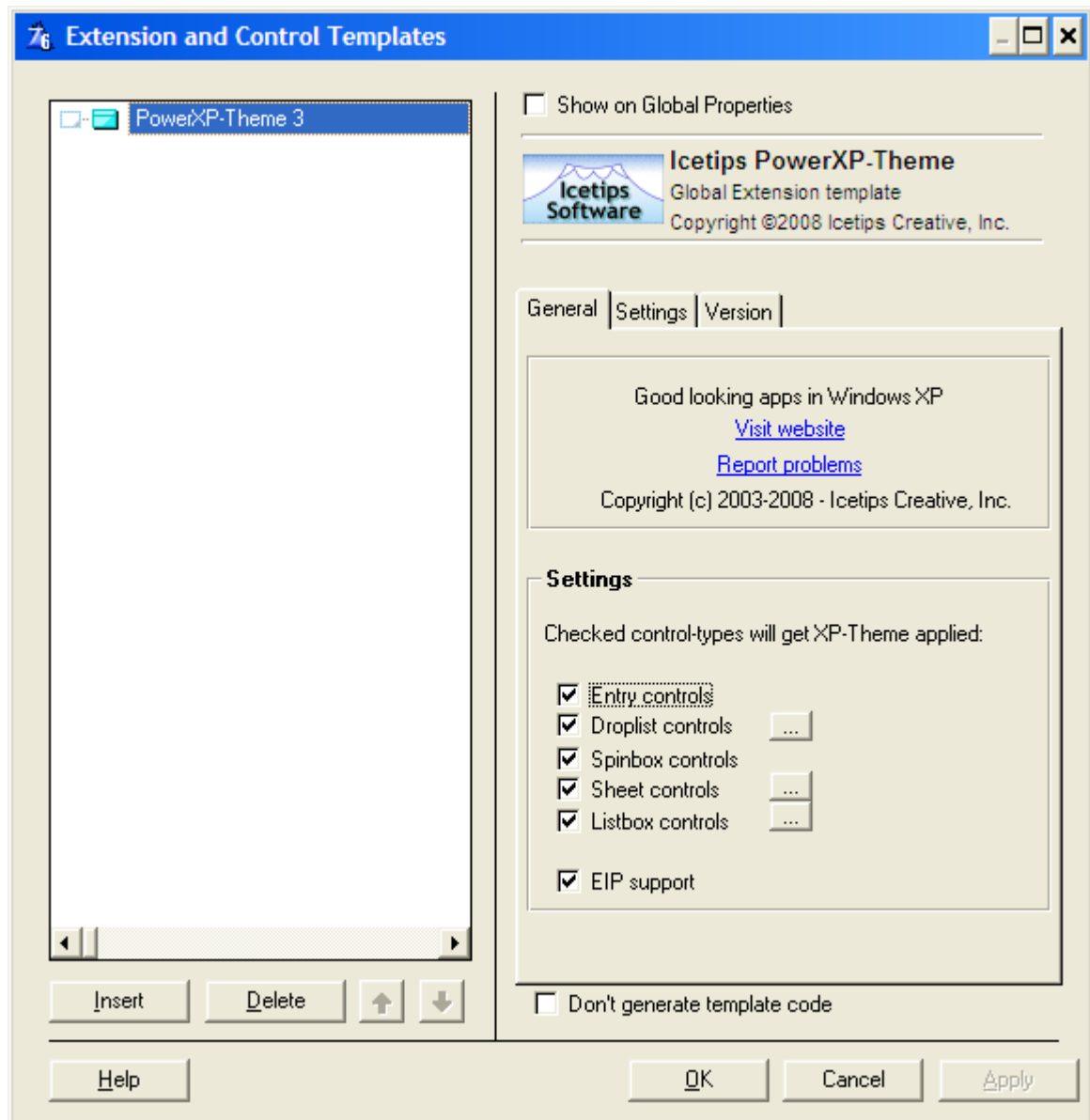
- If your application is Multi-DLL, then add the template to all your applications and recompile.

## 1.3 Templates

### 1.3.1 Global template

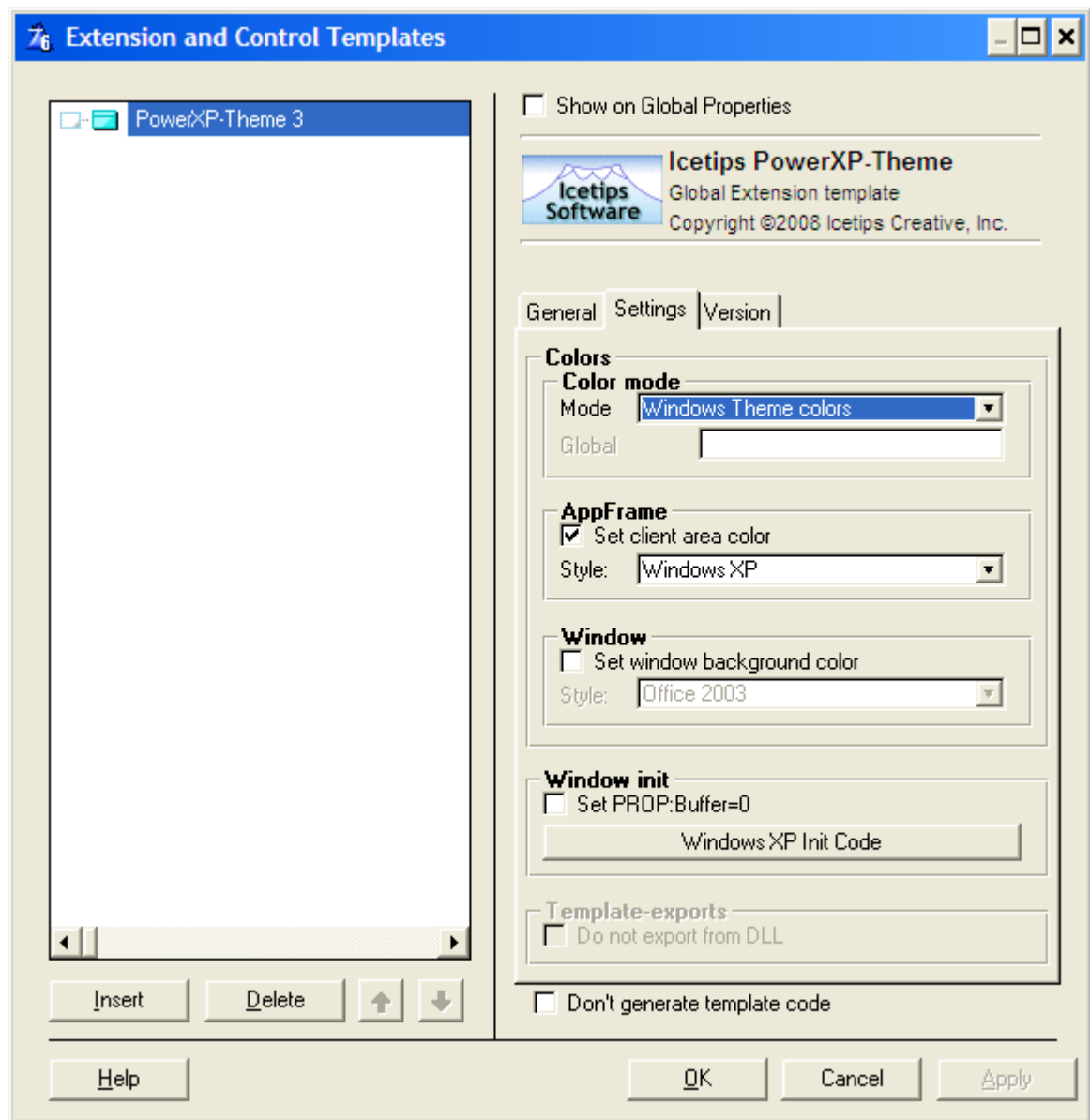
Templates

The global template is responsible for generating most of the PowerXP-Theme code.



If you uncheck some of the check boxes this type of control will not be "themed".

### Global settings



### Color mode

Use this option to control which colors the GetColor method will return.

- Windows Theme colors

Returns the colors of the currently selected Windows XP Theme

- Window Classic colors

Returns classic (grayish) colors of the currently selected Windows XP Theme

- Global variable

PowerXP-Theme queries a global variable to select color set. If the global variable is set to True, Windows Theme colors will be used.

### AppFrame, set client area color



Choose color style for AppFrame's client area

- Windows, set window background color

Choose color style for window background

- Set PROP:Buffer = 0

To be able to draw sheets properly, Window{PROP:Buffer} must be 0. If you experience problems with sheet drawing, try to switch on this setting.

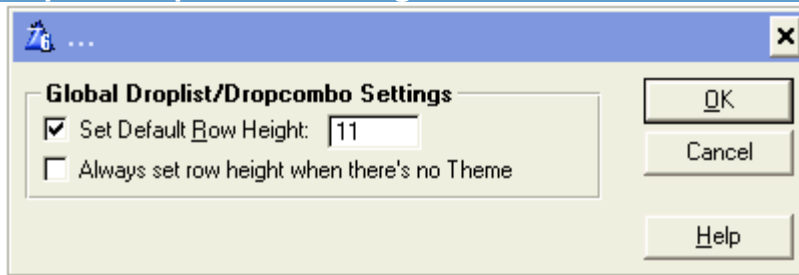
- Windows XP Init code

Code entered here will be generated into every window's init-section, and execute if Windows XP-Theme is active.

- Do not export

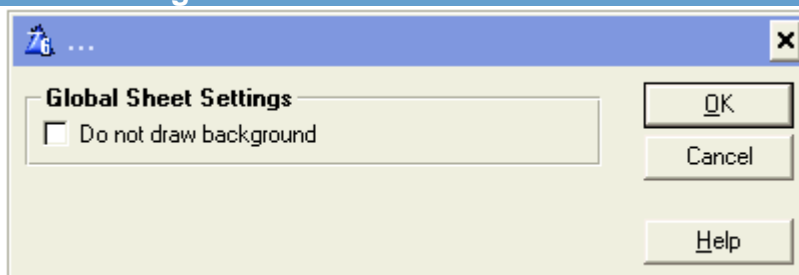
Manual override to avoid exporting methods from data-dll. You usually don't need this.

## Droplist/Dropcombo settings



You can set PowerXP-Theme to alter the row height (LineHeight) on Droplists and Dropcombo controls. If you want PowerXP-Theme to set the same height when Windows Themes isn't active, check "Always set row height when there's no Theme".

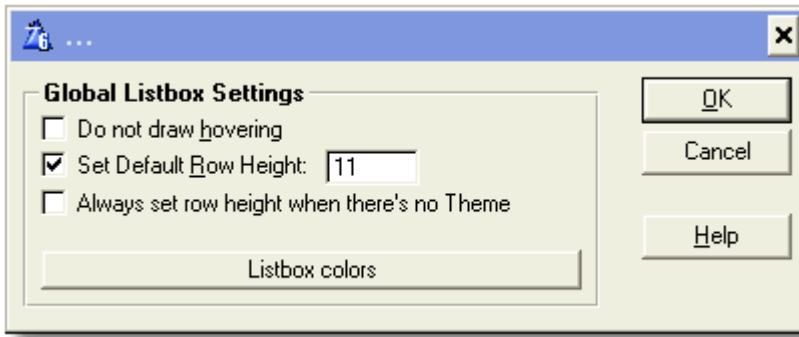
## Sheet settings



Sheets are usually drawn with a white background gradient (the color is controlled by the selected Windows XP-Theme).

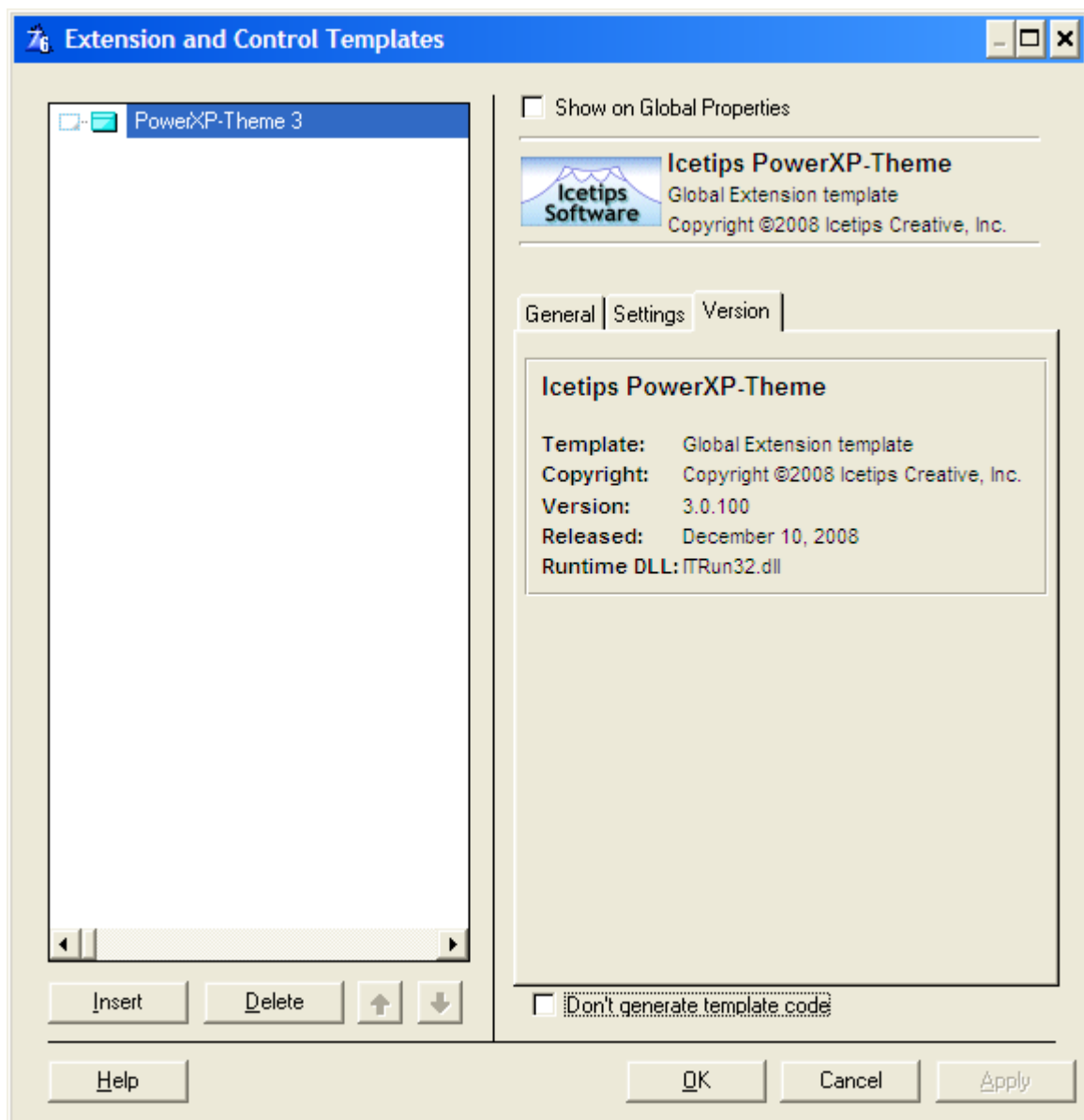
If you do not want this background gradient, check the "Do not draw background" check box.

## Listbox settings



When the user moves the mouse cursor over a header, it will be highlighted. You can switch off this behaviour by setting "Do not draw hovering" on. PowerXP-Theme can alter the row height (LineHeight) on listboxes. If you want set the same height when Windows Themes isn't active, check "Always set row height when there's no Theme".

### Version information (version 3.0.100)



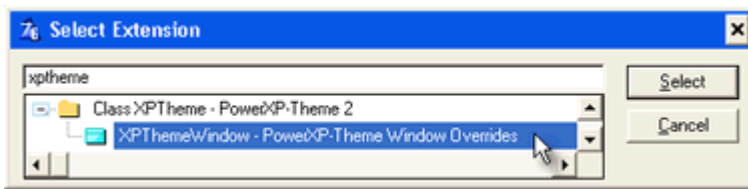
This tab was added in version 3.0.100 to show information about the product. Note that the screenshot above may not match what the current template looks like. Version number and release dates as well as the copyright is updated automatically when each build is released.

### 1.3.2 Override template

### Templates

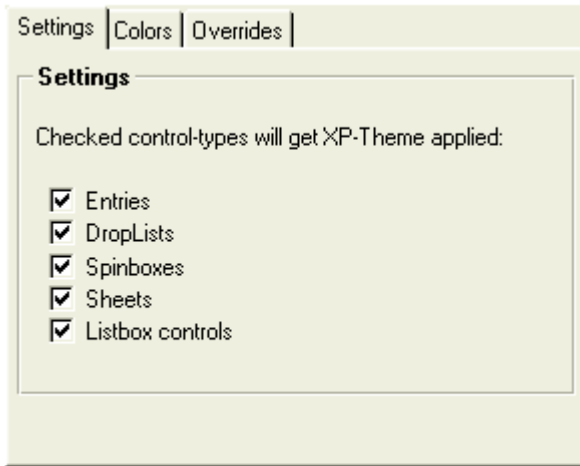
If you need to turn off XP-Theme for some controls in a window (or the entire window), you can use the Exclude-template to your window.

To add the template, add the window extension template "XPThemeWindow - PowerXP-Theme Window Overrides" to you window.



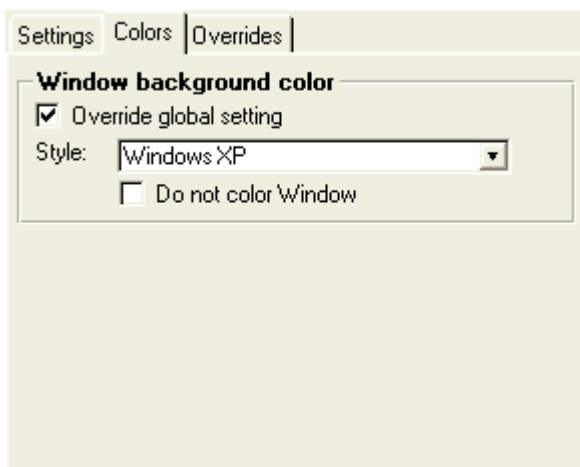
## Settings

With this template you can turn of XP-Theme for a specific type of controls. Uncheck the check box next to the control type you do not want to "theme".



## Colors

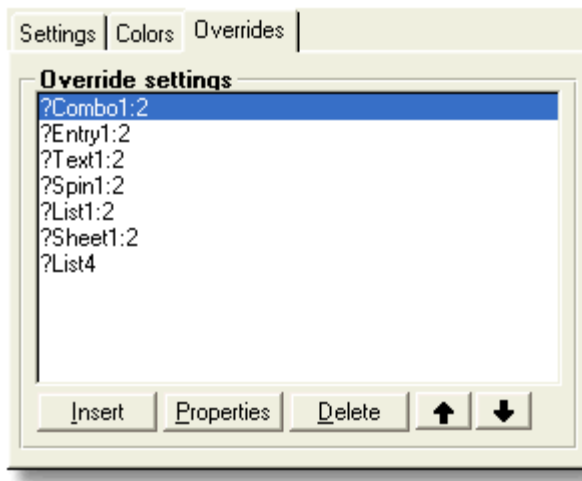
Here you can override background color of the window



## Overrides

If you want to exclude a single control on a window. Simply press the "Insert" button and select the

control from the drop list.  
Each control type may have settings that apply to them.



### 1.3.3 Class methods

### Templates

#### The global object

The global template will generate one global object, and one local object for each window.

The following methods can be used:

- [IsThemeActive](#)
- [GetColor](#)
- [UseLunaColors](#)

#### The window object

In each window a local object will be generated. This object is called PXPWindow.

The following methods can be used:

- [SetColorStyle](#)
- [SetWindowColor](#)
- [SetAppFrameColor](#)
- [AddControl](#)
- [RemoveControl](#)
- [IsSheetWizard](#)
- [SetSheetWizard](#)
- [SetSheetDrawBackground](#)
- [SetListboxHovering](#)

**1.3.3.1 IsThemeActive**Templates - Class methods

---

**PXPGlobal.IsThemeActive()**

IsThemeActive() returns True if Windows XP Theme is enabled on the computer, otherwise False is returned.

This method can be called from anywhere in your code.

Example:

```
IF PXPGlobal.IsThemeActive()  
    !Your code goes here..  
END
```

**1.3.3.2 GetColor**Templates - Class methods

---

**PXPGlobal.GetColor(LONG ColorID),ULONG**

This method will return a color that you can use to set XP colors on controls PowerXP-Theme doesn't theme.

You can pass one of the following equates as the ColorID argument:

```
PXPCOL:Text  
PXPCOL:DarkText  
PXPCOL:Border  
PXPCOL:Gradient_From  
PXPCOL:Gradient_To  
PXPCOL:LightGradient_From  
PXPCOL:LightGradient_To  
PXPCOL:Selection  
PXPCOL:OrangeGradient_From  
PXPCOL:OrangeGradient_To  
PXPCOL:ToolbarBackground  
PXPCOL:WindowBackground  
PXPCOL:ClientArea  
PXPCOL:OfficeClientArea  
PXPCOL:White  
PXPCOL:DarkBlue  
PXPCOL:Line  
PXPCOL:DarkLine  
PXPCOL:DisabledText  
PXPCOL:MenuBackground  
PXPCOL:MenuSelection  
PXPCOL:BtnGradient_From  
PXPCOL:BtnGradient_To  
PXPCOL:OfficeGradient_From  
PXPCOL:OfficeGradient_To  
PXPCOL:OfficeBorder  
PXPCOL:OfficeToolbar_From  
PXPCOL:OfficeToolbar_To
```

---

**1.3.3.3 UseLunaColors**

Templates - Class methods

**PXPGlobal.UseLunaColors(BYTE bUseLunaColors)**

You can use this method to turn off the use of Windows Luna colors (Windows XP Theme colors). The result will be a gray theme. This will only have effect on the GetColor method, which in turn affects window and appframe background colors (and other PowerOffice products with PowerXP-Theme support).

Example:

```
PXPGlobal.UseLunaColors(False)
```

---

**1.3.3.4 AddControl**

Templates - Class methods

**PXPWindow.AddControl(Long cFeq)**

If you create a control at runtime, you will have to make PowerXP-Theme aware of the new control by calling the AddControl-method:

cFeq is the control's Field Equate Label (PROP:Feq)

If the control's type is recognized by PowerXP-Theme the control will be themed.

Example:

```
PXPWindow.AddControl(?MyControl{PROP:Feq})
```

---

**1.3.3.5 RemoveControl**

Templates - Class methods

**PXPWindow.RemoveControl(Long cFeq)**

If you're going to remove runtime created control (added with AddControl), you must call this method before deleting the control, or you will GPF.

cFeq is the control's Field Equate Label (PROP:Feq)

If the control's type already is recognized by PowerXP-Theme control will removed from the internal queues.

Example:

```
PXPWindow.RemoveControl(?MyControl{PROP:Feq})
```

---

**1.3.3.6 IsSheetWizard**

Templates - Class methods

**PXPWindow.IsSheetWizard(LONG nFeq),BYTE**

Use this function to check if a Sheet is set to Wizard.

Example:

```
IsWizard# = PXPWindow.IsSheetWizard(?Sheet1) !Return True if sheet is
```

wizard

---

### 1.3.3.7 SetSheetWizard

Templates - Class methods

#### **XPWindow.SetSheetWizard(LONG nFeq, BYTE blsWizard)**

Change Wizard status of a sheet

Example:

```
XPWindow.SetSheetWizard(?Sheet1, True)
```

---

### 1.3.3.8 SetColorStyle

Templates - Class methods

#### **XPWindow.SetColorStyle(BYTE Style)**

Choose color-style. Use one of the following equates:

PXPSTYLE:WINDOWSXP

PXPSTYLE:OFFICE2003

Example:

```
XPWindow.SetColorStyle(PXPSTYLE:OFFICE2003)
```

---

### 1.3.3.9 SetWindowColor

Templates - Class methods

#### **XPWindow.SetWindowColor(BYTE SetColor=True)**

This method controls if window background color should be changed

Example:

```
XPWindow.SetWindowColor(False) ! Do not change window
background color
```

---

### 1.3.3.10 SetAppFrameColor

Templates - Class methods

#### **XPWindow.SetAppFrameColor()**

This method controls if AppFrame's client-area background color should be changed

Example:

```
XPWindow.SetAppFrameColor() ! Turns appframe client area coloring on
```

---

### 1.3.3.11 SetListboxHovering

Templates - Class methods

#### **XPWindow.SetListboxHovering(LONG nFeq, BYTE bEnabled)**

This method can be used to control whether or not to draw header highlighting on list boxes

Example:

```
XPWindow.SetListboxHovering(0, False) ! Turns off hovering for all list
boxes in this window
XPWindow.SetListboxHovering(?List1, True) ! Turns off hovering for
?List1
```



---

**1.3.3.12 SetTabHeight**

Templates - Class methods

**PXPWindow.SetTabHeight(Long pHeightInPixels=21)**

This method can be used to set the height in pixels of the tabs for tabsheets on the window. Note that it does NOT increase the height of the tabsheet control to compensate for the taller - or shorter - tabs. The developer is responsible for designing the sheet to accommodate the taller, or shorter, tabs.

Example:

```
PXPWindow.SetTabHeight(50) !! Set the tab height to 50 pixels.
```

---

**1.3.3.13 SetSheetDrawBackground**

Templates - Class methods

**PXPWindow.SetSheetDrawBackground(LONG nFeq, BYTE bDrawBackground)**

This method can be used to control whether or not to draw gradient background for sheets

Example:

```
PXPWindow.SetSheetDrawBackground(0, False)           ! Turns off
background for all sheets in this window
PXPWindow.SetSheetDrawBackground(?Sheet1, True)      ! Turns back
on background for ?Sheet1
```

## 1.4 Misc

### 1.4.1 License Agreement

**Misc**

By installing this software you have agreed to be bound by the following Licence Agreement.

#### **Icetips PowerXP-Theme License**

END-USER LICENSE AGREEMENT FOR POWERXP-THEME IMPORTANT - READ CAREFULLY.

This End-User License Agreement ("EULA") is a legal AGREEMENT between you and Icetips Creative, Inc. for the PowerXP-Theme software product identified above, which product includes computer software and may include associated media, printed materials, and "online" or electronic documentation ("SOFTWARE PRODUCT"). By installing, copying, or otherwise using the SOFTWARE PRODUCT, you agree to be bound by the terms of this EULA. If you do not agree to the terms of this EULA, then DO NOT install or use the SOFTWARE PRODUCT.

#### Software Product License

TERMS AND CONDITIONS of an AGREEMENT by and between Icetips Creative, Inc. and you (either an individual or an entity) . By installing this software package, or exercising your rights to make and use copies of the Software (as may be provided for below), or pressing the 'Yes' button below, you agree to be bound by the terms of this Icetips Creative, Inc. License Agreement.

The enclosed software, including, but not limited to, one or more of the following: source code, include files, object code, dynamic link libraries, static libraries, sample programs, utility programs, and scripts, together with the accompanying documentation (collectively known as the "Software") is owned by Icetips Creative, Inc. or its suppliers and is protected by U.S. copyright laws and international treaties. Therefore, you must treat the Software like any copyrighted material (e.g., a book or musical recording) except that you may make either (a) one backup copy of the Software solely for backup purposes, or (b) transfer the Software to a hard disk and keep the original copy solely for backup purposes.

ICETIPS CREATIVE, INC. GRANTS TO YOU THE LIMITED RIGHT TO USE THE SOFTWARE IN THE MANNER SET FORTH IN THIS AGREEMENT.

#### Subject To The Restrictions Contained In This Agreement You May

(i) Incorporate the template and sourcecode into software application products that you develop; (ii) modify (i.e. modify the source code and rebuild) the dynamic link libraries and statically linked libraries and incorporate the modified dynamic link libraries and statically linked libraries into software application products that you develop; (iii) make and distribute copies of the dynamic link libraries and statically linked libraries of the Software as incorporated into software application products that you develop provided that the Software, or other Icetips Creative, Inc. products, do not constitute a major portion of the value of your product; (iv) solely with the respect to electronic documents, you may make an unlimited number of copies (either in hardcopy or electronic form), provided that such copies shall be used only for internal purposes and are not republished or distributed beyond the licensee's premises; (v) use and modify the source code version of those portions of the Software that are identified in the documentation as the Sample Code ("SAMPLE CODE"), provided you do not distribute the SAMPLE CODE, or any modified version of the SAMPLE CODE, in source code form.

#### Notwithstanding Any Provisions In This Agreement To The Contrary, You May Not

(i) Distribute in any manner any of the include files, source code, SAMPLE CODE, make files, object modules or independent static libraries of the Software; (ii) use, copy, modify, merge or compile all or any portion of the source code or object code of the Software except as expressly provided in this agreement. (iii) make telecommunication transmittal of the Software; (iv) distribute any portion of the Software or any derivative of any portion of the Software in a software development product or otherwise in competition with Icetips Creative, Inc.'s distribution of the Software; (v) decompile,

disassemble or reverse engineer any object code form of any portion of the Software; (vi) expose the interfaces of the Software through your application. (e.g. an OCX, DLL, class library, etc.); (vii) rent or lease the Software; (viii) disclose any source codes of the Software to any person or entity.

THE SOURCE CODES OF THE SOFTWARE ARE VALUABLE ASSETS OF ICETIPS CREATIVE, INC. YOU AGREE TO KEEP ALL SOURCE CODES OF THE SOFTWARE IN CONFIDENCE. YOU MAY NOT TRANSFER OR ASSIGN THE SOFTWARE OR YOUR RIGHTS UNDER THIS AGREEMENT.

#### Limited Warranty

THE SOFTWARE AND ACCOMPANYING WRITTEN MATERIALS (INCLUDING INSTRUCTIONS FOR USE) ARE PROVIDED "AS IS". ICETIPS CREATIVE, INC. DOES NOT WARRANT, GUARANTEE OR MAKE ANY REPRESENTATIONS REGARDING THE USE, OR THE RESULTS OF USE, OF THE SOFTWARE OR WRITTEN MATERIALS IN TERMS OF CORRECTNESS, ACCURACY, RELIABILITY, CURRENT, OR OTHERWISE. YOU ASSUME THE ENTIRE RISK AS TO THE RESULTS AND PERFORMANCE OF THE SOFTWARE.

Icetips Creative, Inc. does not warrant that the Software will meet your requirements, that operation of the Software will be uninterrupted or error-free, or that all Software errors will be corrected. Icetips Creative, Inc. is not responsible for problems caused by changes in the operating characteristics of computer hardware or computer operating systems which are made after the release of the Software nor for problems in the interaction of the Software with non-Icetips Creative, Inc. Icetips Creative, Inc. will have no responsibility to replace or refund the license fee for media damaged by accident, abuse or misapplication.

THIS SOFTWARE IS INTENDED FOR COMMERCIAL, INSTITUTIONAL, AND INDUSTRIAL USERS. THE ABOVE WARRANTIES ARE EXCLUSIVE AND IN LIEU OF ALL OTHER WARRANTIES, WHETHER EXPRESSED OR IMPLIED, INCLUDING THE IMPLIED WARRANTIES OF MERCHANTABILITY, FITNESS FOR A PARTICULAR PURPOSE AND NON-INFRINGEMENT. NO ORAL OR WRITTEN INFORMATION OR ADVICE GIVEN BY ICETIPS CREATIVE, INC., ITS EMPLOYEES, DISTRIBUTORS, DEALERS OR AGENTS SHALL INCREASE THE SCOPE OF THE ABOVE WARRANTIES OR CREATE ANY NEW WARRANTIES. NEITHER ICETIPS CREATIVE, INC. NOR ANYONE ELSE WHO HAS BEEN INVOLVED IN THE CREATION, PRODUCTION OR DELIVERY OF THE SOFTWARE SHALL BE LIABLE FOR ANY DIRECT, INDIRECT, CONSEQUENTIAL OR INCIDENTAL DAMAGES (INCLUDING DAMAGES FOR LOSS OF BUSINESS PROFITS, BUSINESS LOSSES, BUSINESS INTERRUPTION, LOSS OF DATA, AND THE LIKE) ARISING OUT OF THE USE OR INABILITY TO USE THE SOFTWARE, OR ANY OTHER CLAIM BY ANY PARTY EVEN IF ICETIPS CREATIVE, INC. HAS BEEN ADVISED OF THE POSSIBILITY OF SUCH DAMAGES. IN THE EVENT ICETIPS CREATIVE, INC. IS LIABLE FOR ANY DAMAGES, ICETIPS CREATIVE, INC.'s LIABILITY FOR DAMAGES SHALL BE LIMITED TO THE AMOUNT PAID FOR THE SOFTWARE UNDER THE TERMS AND CONDITIONS OF THIS AGREEMENT.

Icetips Creative, Inc.  
136 E 8th Street  
Port Angeles WA 98362  
EMail: support@icetips.com  
www.icetips.com - www.icetipscreative.com

## 1.4.2 Frequently Asked Questions

Misc

Some common questions and their answers.

**Q: Will the Theme follow what the user has selected as his/hers theme ??**

**A: Yes**

**Q: Does the application get "themed" under Windows 9x, NT and 2000?**

A: No. Windows XP Themes are only supported by Windows XP and later.

**Q: Will my application still work under Windows 9x, NT and 2000?**

A: Yes. Since all Windows XP specific API's are bound at runtime, the application will run under any 32bit Windows version.

**Q: Does PowerXP-Theme work with ClarioNet ?**

A: No, we use Windows API graphic functions which isn't supported by ClarioNet.

**Q: I got Windows 2003 Server, and my application doesn't get themed...**

A: Windows 2003 requires the Theme service to be turned on. You may want to read this article about the subject <http://www.visualwin.com/Luna/>

**Q: I don't get gradient backgrounds on one of my sheets..**

A: A few third party templates set PROP:Buffer=1. Switch on "Set PROP:Buffer=0" in the global template

**Q: My check boxes and radios turn black!**

A: Switch on "Set PROP:Buffer=0" in the global template

### 1.4.3 Limitations

Misc

There are some limitations when using all features of PowerXP-Theme.

Use the [override template](#) or redesign your windows to work around limitations.

#### Other third party tools

- If you are using the PropertyGrid wrapper from Noyantis along with XP-Theme please be aware that if you want to have two PropertyGrid controls in the same window, the second PropertyGrid will not display until you click on it. If you add the [XP-Theme Window Overrides](#) template and disable the XP Theme for the control behind the wrapper, everything works correctly.
- XP-Theme is not compatible with some of the BST control templates. We suggest that you override the BST lists using the XP-Theme [Override template](#).

#### Sheets/Tabs

- Only tabs placed "Above" sheet is supported
- Only one row of tabs (use scroll)
- 0{PROP:Buffer} must be 0 (use the global template option if this is a problem)
- Wallpaper next to tabs (in sheet area) will be overdrawn with window background color
- If you want to change the wizard-mode runtime (after XP-Theme has inited) you will have to use PXPWindow.SetSheetWizard
- Controls can not be placed on the tab-strip (they will be overdrawn)
- Radios/Check boxes which is set Flat, or have icon (and placed on sheets) is not handled by PowerXP-Theme and some Clarion generated flicker may occur.
- There is currently no support for tool tips on tabs.

#### Spin boxes

- Spin boxes with the scroll attribute set is not supported

## List boxes

- Header decimal alignment is not supported, and will be left aligned.
- Transparent listboxes on sheets will flicker
- Groups with "Last on line" can cause formatting issues in the header (Reported February 2009 - under investigation)

## Background color

- If you have the "Set Window background color" setting on, and then set the background color of a control to COLOR:None, the background color of the control will become the same as the window background color.

## Switching between Windows Themes at runtime

- Runtime switching to or from Windows Classic Theme is not supported. Switching between various Windows XP styles is supported.

### 1.4.4 Contact Us

Misc

#### Upgrades

The latest upgrades can be downloaded from [www.icetips.com](http://www.icetips.com) Note that you must have a valid Gold Subscription login to download.

#### Bug reports and suggestions

If you want to contact us, please send us emails to [support@icetips.com](mailto:support@icetips.com)

If your app is a multi-dll app, please try to recompile all your apps before reporting possible bugs.

When reporting bugs, please let us know your version of Clarion and PowerXP Theme, and if possible, provide a screen shot. An example app or steps to reproduce in the demo app is highly appreciated.

Please report bugs to our bug tracking system at <http://icetips.fogbugz.com> Make sure that you select the proper project (PowerXP Theme) and the correct area (Class/Documentation/Install/Misc/Templates) and give us good, detailed description of what the problem is. You can attach files to your bug reports.

#### Other Clarion Products

You'll find more of our Clarion products at [www.icetips.com](http://www.icetips.com)

### 1.4.5 Installed files

Misc

#### Template and source files

- Clarion6\3rdParty\LibSrc\xptheme.inc
- Clarion6\3rdParty\LibSrc\xptheme.clw
- Clarion6\3rdParty\LibSrc\xpthemedc.inc
- Clarion6\3rdParty\LibSrc\xpthemedc.clw
- Clarion6\3rdParty\LibSrc\xpthemeeq.inc

- Clarion6\3rdParty\Template\xptheme.tpl
- Clarion6\3rdParty\Images\ITLogo.gif
- Clarion6\Bin\ITRun32.dll

### Demo

- Clarion6\3rdParty\Examples\xpthemedemo.app
- Clarion6\3rdParty\Examples\xpthemedemo.dct
- Clarion6\3rdParty\Examples\gear.ico

### Documentation

- Clarion6\3rdParty\Docs\xptheme.chm
- Clarion6\3rdParty\Docs\xptheme.pdf

For an upto date list of the files being installed and where they are installed, please see:

[http://www.icetips.com/productbuilds/xptheme\\_install.htm](http://www.icetips.com/productbuilds/xptheme_install.htm)

## 1.4.6 Version history

Misc

### Version 2018.10.146 [October 14, 2018]

#### **May 14, 2014:**

- Install: Install built for Clarion 9.1

### Version 3.0.136 [October 3, 2013]

#### **October 3, 2013:**

- Install: Last build included old files, causing problems. All files have been updated to latest sources.

### Version 3.0135 [August 6, 2013]

#### **August 6, 2013:**

- Install: Install built for Clarion 9.0 beta

#### **September 9, 2012:**

- Classes Theming of listboxes did not gray header text if the listbox control was disabled. Fixed.
- Documentation Main document style had accidentally be changed to a 1.5" indent. Fixed.

### Version 3.0.133 [July 28, 2011]

---

**May 16, 2011:**

---

- Classes Added SetTabHeight method to the PXPWindowClass and to the PXPSheetClass. It sets the height for the tabs on the sheet. Note that it does not increase the height of the sheet to accommodate the difference in height, rather developer must take into account the height of the tabs. The default height is 21 and the height is always specified in pixels.

---

**May 15, 2011:**

---

- Classes Listbox headers with hidden columns (0 width) were not scrolled horizontally correctly. Fixed.

---

**March 10, 2011:**

---

- Classes Listbox headers without groups and with fixed column(s) were not scrolled horizontally correctly. Fixed.

---

**March 5, 2011:**

---

- Classes Listbox headers with groups and no fixed columns were not scrolled horizontally correctly. Fixed.

---

**March 3, 2011:**

---

- Classes Listbox groups with a single column and no group header were not drawn correctly. Fixed.

---

**March 2, 2011:**

---

- Classes Listbox groups were not drawn correctly. Fixed.
- Classes Listbox headers were not scrolled horizontally correctly. Fixed
- Classes Listbox headers with Fixed columns were not scrolled horizontally correctly. Fixed
- Classes Listboxes without horizontal scrollbar were not scrolled horizontally correctly when using keyboard (Left/Right arrow keys) to scroll. Fixed.

---

**February 1, 2011:**

---

- Template Template did not export global variables or classes in Clarion 7. This is needed because PowerToolbar still uses some settings from XPTheme in Clarion 7. Fixed.

---

**Version 3.0.124 [December 21, 2010]**

---

---

**November 24, 2010:**

---

- Template Template did not fully prevent Clarion 7 from generating theme code. Fixed.

---

**Version 3.0.122 [June 6, 2010]**

---

---

**March 1, 2010:**

---

- Template Export section was generated into .exp file for EXE files as well as DLL. Fixed.

---

**September 29, 2009:**


---

- Classes Header text was not properly centered. Fixed.

---

**September 10, 2009:**


---

- Classes If a column had no right border, a header splitter line was still drawn. Fixed.
- Classes Header text was not properly left-aligned with the text in the column. Fixed.

---

**June 18, 2009:**


---

- Template Added an "Exclude Procedures" option in the global template. Procedures that are selected there are not themed and no code for XP-Themes generated in those procedures. Note that this is NOT the same as the override template, which does generate all the code but then removes or overrides selected controls. This template option removes **all** generated code from both the global template and the override template.

---

**Version 3.0.113 [May 19, 2009]**


---



---

**May 18, 2009:**


---

- Classes Split the xpthemedc.clw into 7 new files with 1 source file for each control class, such as entries, lists, sheets. etc. Makes it much easier to navigate each class in order to fix things.
- Classes Fixed columns in listboxes were not drawn correctly. Fixed.
- Classes If columns in a listbox group did not have headers but the group had a header the header was drawn in normal height but the group horizontal splitter line was still drawn going through the group header. Fixed.
- Classes When scrolling a listbox with groups horizontally the headers could get out of sync with the columns. Fixed.

---

**Version 3.0.110 [May 14, 2009]**


---



---

**May 14, 2009:**


---

- Classes Wizard sheet could still react to left mouse click where the tabs would be on a normal sheet allowing users to click to tabs. Fixed.
- Classes Multiple groups in listboxes could cause various problems, including not drawing some of the controls, not drawing horizontal splitter line, etc. Fixed.

---

**Version 3.0.107 [April 15, 2009]**


---



---

**March 9, 2009:**


---

- Classes Groups in listboxes could cause a horizontal lines through the header. Fixed.  
Addendum: This is still an issue with group columns without headers.



---

---

**January 1, 2009:**

---

- Classes Prop:HScroll and Prop:Vscroll on [spin boxes is not supported](#). When spin boxes with either of the scrollbar settings turned on were themed, they would cause the original spinbox to draw under the themed one causing a rather unsightly effect. Now horizontal and vertical scrollbars are turned off on spin boxes before the controls are themed.

**Version 3.0.106 [December 29, 2008]**

- All code and documentation modified from PowerOffice AS to Icetips Creative, Inc.
- Bug tracking set up at <http://icetips.fogbugz.com>
- Added link to bug tracking to Global template
- Updated link to website to point to [www.icetips.com](http://www.icetips.com)
- Added ITRun32.dll to install
- Version information added to global template
- Previous beta changes are all implemented in public release - see below:

**2.3 BETA 2 - not released publicly before**

- New: Support for toolbar controls
- Fixed: Memory leak in listbox class
- Fixed: Alt+Tab to change tabs did not trigger field selection
- Fixed: Entries and spin boxes was drawn incorrectly at various layout combinations

**2.3 BETA 1 - not released publicly before**

- Fixed: Listbox headers after groups with fields without right border was drawn offset
- Fixed: Grouped listbox headers with small lineheight was drawn incorrectly
- Fixed: Holding down Alt+Tab did not change tabs
- Fixed: Alt+Tab to change tabs would change current cursor focus
- Fixed: Wrong right border position on listboxes when using Large Fonts

**Version 2.2 [01.12.2005]**

- New: Listbox support
- New: Support for IceTips Xplore on listboxes
- New: Template option to force the template not to export anything
- New: Option to let variable or expression control color mode
- New: Option to set default lineheight for Droplists and Dropcombos
- New: 'Do not color' option in the override template
- New methods: [SetListboxHovering](#), [RemoveControl](#)
- Changed: Prompt for Luna-colors has changed to droplist
- Changed: Template now sets required `_ABC*Mode_` project defines in legacy apps
- Changed: PXPWindow.Init now takes optional IsAppFrame argument
- Changed: Template variable name for Window background color
- Changed: Actions of the template option 'Set PROP:Buffer=0' has been changed to force PROP:Buffer=0 whenever it's set to 1, not only after window int
- Changed: Installer built with SetupBuilder 5
- Fixed: Tabs without text didn't show
- Fixed: CREATE:Drop compile error
- Fixed: Radios, checkboxes and spinboxes would stay hovered when mouse was moved off the

- control
- Fixed: If last tab was hidden, you could scroll infinitely
- Fixed: Tab text didn't update if changed
- Fixed: DropCombo button could get wrong width
- Fixed: Disabling of active tab wasn't handled properly
- Fixed: Stack overflow on nested sheets
- Fixed: Transparent controls would get a background color when 'Set background color' is active
- Fixed: Ctrl+Tab didn't work on sheets
- Fixed: Window background could sometimes add color to wrong window
- Fixed: Active tab didn't stay in view when scrolling
- Fixed: Tabs didn't update when PROP:Selected was set
- Fixed: Sheet header background was wrong if parent sheet had 'do not draw background' on
- Fixed: GPF when 'Window background color' was switched on
- Fixed: Window ghost when 'Window background color' was switched on
- Fixed: Window background color wasn't set if no controls was subclassed by XP-Theme
- Fixed: AddControl on non-WinXP would GPF
- Fixed: %EditInPlace missing template symbol
- Fixed: Strings/Prompts is set transparent even when background color is set
- Fixed: White line above prompt/string with background color on sheet

### Version 2.1 [10.06.2005]

- Sheet/Tab support
- Support for EIP controls
- Fixed a bug that caused black borders in Windows Server 2003
- Added several class methods (to support Theme colors)
- Added thread synching to the global class
- Added Radio-class and Checkbox-class for use with Sheets (to remove Clarion flicker)
- Added new template option, Force 0{PROP:Buffer}
- Added new template options to set color styles
- Fixed the LazyOpen-bug (Error-37 and empty list boxes)
- Added global option to turn of drawing of Sheet backgrounds
- PXPWindow-class was generated regardless of the 'Don't generate code'-option
- Fixed bugs in demo-application

### Version 2.0 [01.05.2004]

- This is a complete rewrite of the old (deprecated) C6.0 version PowerXP-Theme