



Icetips Report Checkboxfixer

Copyright ©2002-2013 Icetips Alta LLC

Note:

To change the product logo for your own print manual or PDF, click "Tools > Manual Designer" and modify the print manual template.

Title page 1

Use this page to introduce the product

by Arnór Baldvinsson

This is "Title Page 1" - you may use this page to introduce your product, show title, author, copyright, company logos, etc.

This page intentionally starts on an odd page, so that it is on the right half of an open book from the readers point of view. This is the reason why the previous page was blank (the previous page is the back side of the cover)

IceTIPS Report Checkboxfixer

Copyright ©2002-2013 IceTIPS Alta LLC

All rights reserved. No parts of this work may be reproduced in any form or by any means - graphic, electronic, or mechanical, including photocopying, recording, taping, or information storage and retrieval systems - without the written permission of the publisher.

Products that are referred to in this document may be either trademarks and/or registered trademarks of the respective owners. The publisher and the author make no claim to these trademarks.

While every precaution has been taken in the preparation of this document, the publisher and the author assume no responsibility for errors or omissions, or for damages resulting from the use of information contained in this document or from the use of programs and source code that may accompany it. In no event shall the publisher and the author be liable for any loss of profit or any other commercial damage caused or alleged to have been caused directly or indirectly by this document.

Printed: August 2013 in (wherever you are located)

Publisher

...enter name...

Managing Editor

...enter name...

Technical Editors

...enter name...

...enter name...

Cover Designer

...enter name...

Team Coordinator

...enter name...

Production

...enter name...

Special thanks to:

All the people who contributed to this document, to mum and dad and grandpa, to my sisters and brothers and mothers in law, to our secretary Kathrin, to the graphic artist who created this great product logo on the cover page (sorry, don't remember your name at the moment but you did a great work), to the pizza service down the street (your daily Capricciosas saved our lives), to the copy shop where this document will be duplicated, and and and...

Last not least, we want to thank EC Software who wrote this great help tool called HELP & MANUAL which printed this document.

Table of Contents

| | |
|--|-----------|
| Foreword | 5 |
| Part I Selecting the parent details | 7 |
| Part II Setting a use variable for the detail | 10 |
| Part III Introduction | 12 |
| Index | 0 |

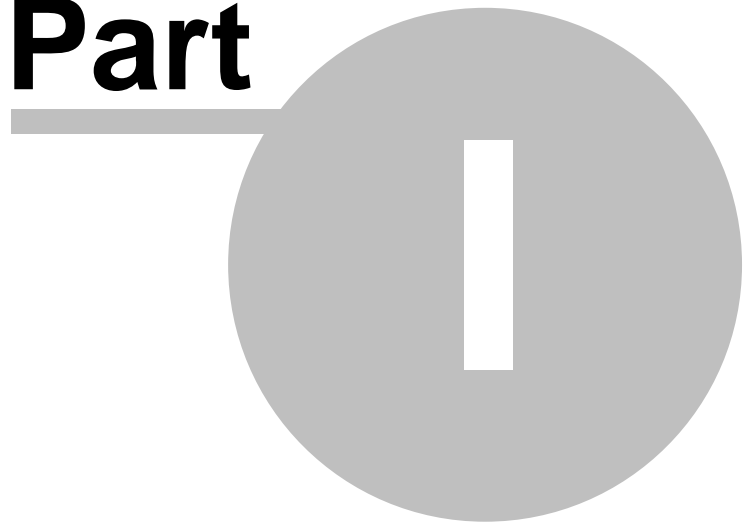
Foreword

This is just another title page
placed between table of contents
and topics

Top Level Intro

This page is printed before a new
top-level chapter starts

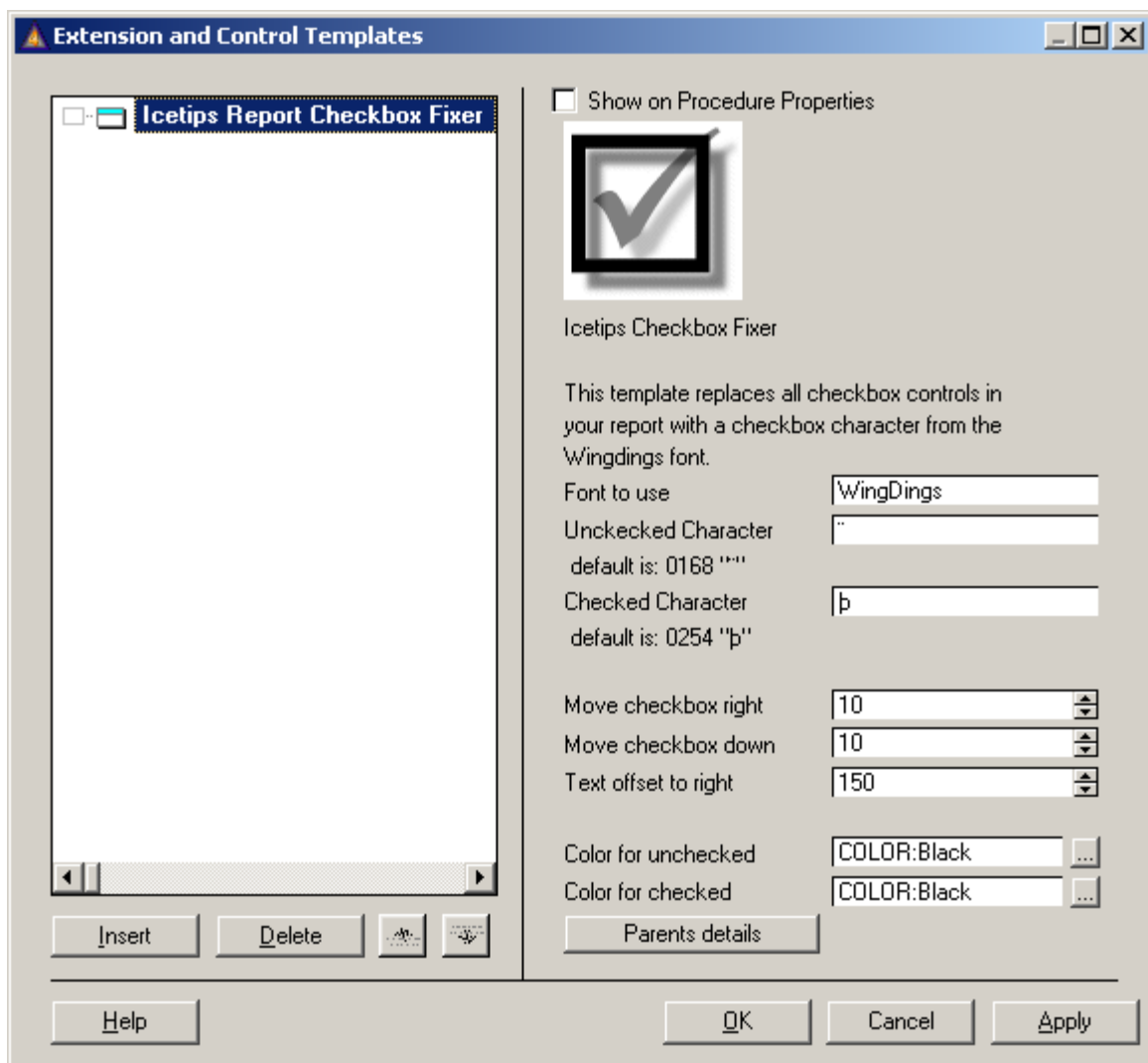
Part



1 Selecting the parent details

In Clarion 4 and Clarion 5 there was a bug that prevents you from creating controls at runtime unless you specify which detail it is supposed to be created on. In Clarion 5.5 this is not a problem because the Prop:Parent works correctly there.

So in order for you to be able to use this templates in Clarion 4 and Clarion 5, you must select the checkbox controls and specify the parent detail for them. If you have many checkboxes on many different details, the best way would probably be to note down which checkbox is on which detail or generate the report and look at the generated code while you are doing this.

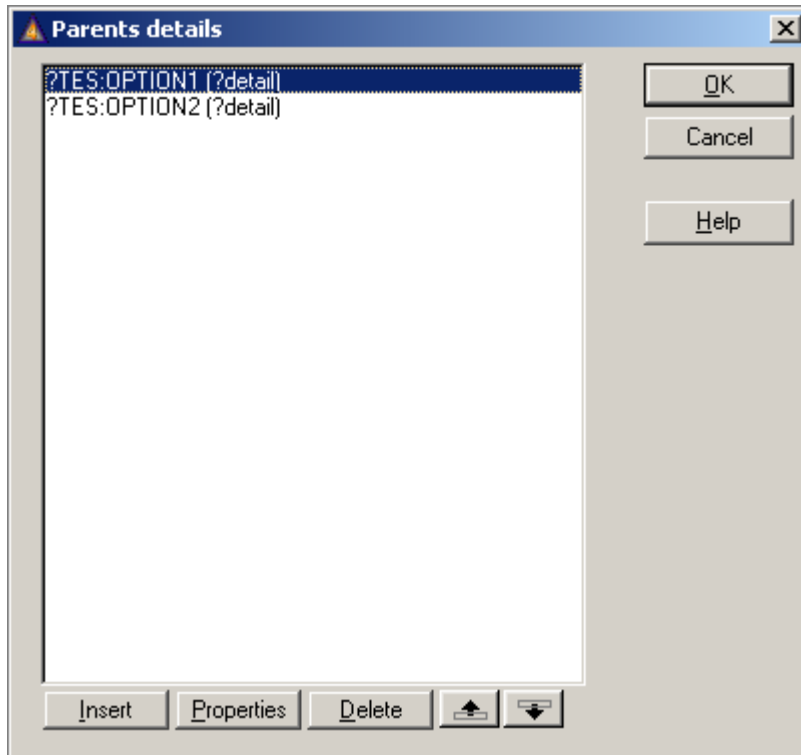


Applying the Checkbox Fixer template in Clarion 4

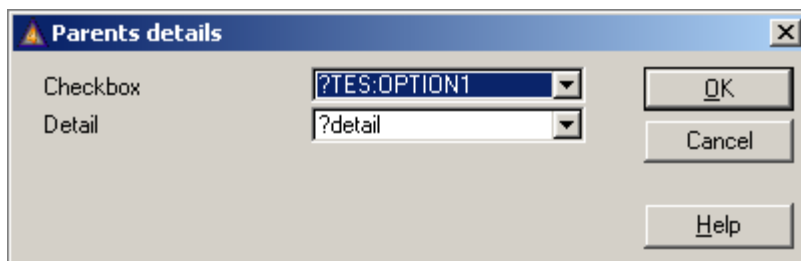
Note that the Parents detail button is disabled in Clarion 5.5 and only enabled in Clarion 4 and Clarion 5.

Click on the Parents details button and then add ALL the checkboxes that you want fixed and select the appropriate details. Note that if the detail does not show up in the drop down it is because it does not have a use variable defined and you need to go back to step one.

Each and every checkbox must be entered in this way. Checkboxes that are not added through this method will simply not be changed. The pictures below demonstrate how this is done.



Two checkboxes added and detail selected



Selecting checkbox and detail

Top Level Intro

This page is printed before a new
top-level chapter starts

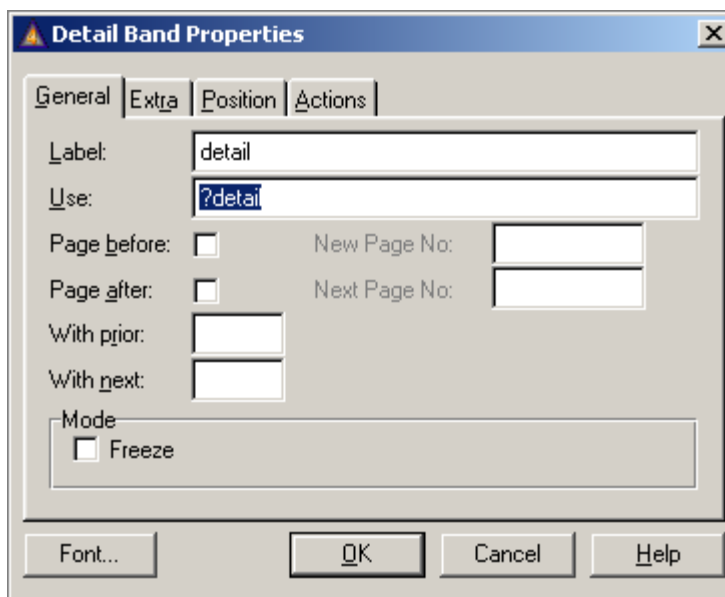
Part



2 Setting a use variable for the detail

Select the detail where you have checkbox controls on. Right click on the detail or the detail header (the gray band above the detail band) and select Properties from the menu. Make sure that you are changing the properties for the detail, not any of the controls on the detail.

Place the cursor in the Use field and type in a label to use, prefixed with a question mark, example ?Detail. Good way to do this is to copy the Label of the detail to the Use field and simply prefix it with a question mark. Note that the use variable obeys the same rules as labels, i.e. no spaces, special characters, etc.



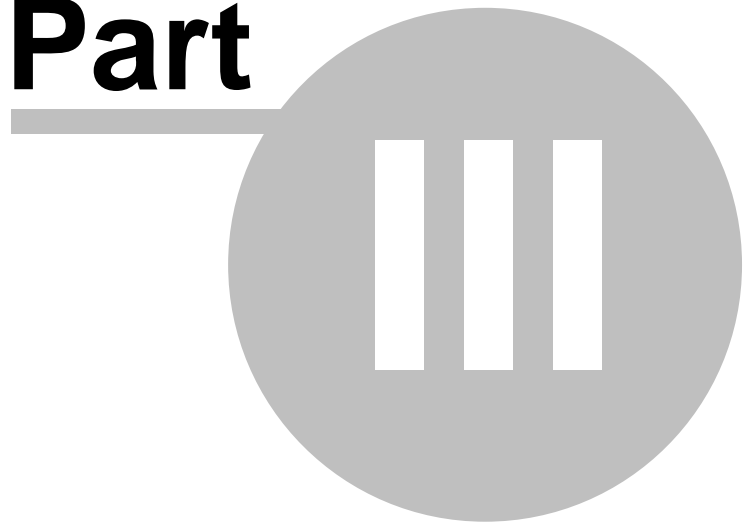
The screenshot shows the 'Detail Band Properties' dialog box with the following fields and options:

- General** (selected tab)
- Label:** detail
- Use:** ?detail
- Page before:** New Page No: []
- Page after:** Next Page No: []
- With prior:** []
- With next:** []
- Mode:** Freeze
- Buttons:** Font..., OK, Cancel, Help

Top Level Intro

This page is printed before a new
top-level chapter starts

Part



3 Introduction

2013-08-03: Checkbox fixer is now compatible with every version of Clarion from 4.0 to 9.0 alpha.

Added options to make the template compatible with Clarion 4 and Clarion 5.

In order for the Checkbox Fixer to work with Clarion 4 and Clarion 5, there are certain things that must be done.

1. The details in the report must have a use variable
2. The checkboxes and their relative parent detail must be selected individually

Endnotes 2... (after index)

Back Cover