

# **Icetips Xplore**

**Classes and Templates**

# Icetips Xplore

## Copyright ©2002-2018 Icetips Alta LLS

All rights reserved. No parts of this work may be reproduced in any form or by any means - graphic, electronic, or mechanical, including photocopying, recording, taping, or information storage and retrieval systems - without the written permission of the publisher.

Products that are referred to in this document may be either trademarks and/or registered trademarks of the respective owners. The publisher and the author make no claim to these trademarks.

While every precaution has been taken in the preparation of this document, the publisher and the author assume no responsibility for errors or omissions, or for damages resulting from the use of information contained in this document or from the use of programs and source code that may accompany it. In no event shall the publisher and the author be liable for any loss of profit or any other commercial damage caused or alleged to have been caused directly or indirectly by this document.

Published: October 2018

### **Publisher**

*Icetips Alta LLC*

### **Managing Editor**

*Arnor Baldvinsson*

# Table of Contents

Foreword	0
<b>Part I Welcome</b>	<b>2</b>
<b>Part II Quick Start</b>	<b>4</b>
<b>Part III Reference</b>	<b>7</b>
<b>1 Templates</b>	<b>7</b>
<b>Global Template</b>	<b>7</b>
Global - Defaults	8
Global - End User Options	9
Global - Previewer	10
Global - Support	11
<b>Xplore Browse Extension</b>	<b>11</b>
Browse General	12
Browse Columns	14
Column Field Assignments	15
Additional Sort Fields	18
Browse End User Options	20
Browse Menus	23
Browse Reports	24
Browse List Control	25
Browse Notes	26
Browse Support	27
<b>Xplore Listbox Extension</b>	<b>28</b>
<b>2 Xplore Menu (runtime)</b>	<b>29</b>
Filter Menu	30
Xplore Menu	31
Output Menu	34
Export to CSV	34
Export to HTML	35
<b>Part IV Misc</b>	<b>40</b>
1 Upgrade Issues	40
2 License Agreement	41
3 Version History	46
4 Limitations	53
5 Contact us	54
<b>Part V Old Documentation</b>	<b>56</b>
1 Implementing Xplore	57
2 Xplore Options	60
3 Dictionary User Options	63
4 English Translation	64

<b>5</b>	<b>Added since build 25 .....</b>	<b>65</b>
<b>6</b>	<b>Multi-DLL Requirements .....</b>	<b>66</b>
<b>7</b>	<b>Xplore Properties .....</b>	<b>67</b>
<b>8</b>	<b>Xplore Features .....</b>	<b>68</b>
<b>9</b>	<b>Tips &amp; Tricks .....</b>	<b>69</b>
	<b>Index</b>	<b>71</b>

**Part**



**Chapter 1 - Welcome**

# 1 Welcome

## Welcome to Icetips Xplore, build 2018.10.332

<b>Documents updated</b>	Sunday, October 14, 2018
<b>Version/Build</b>	2018.10.332
<b>Build Date</b>	October 14, 2018
<b>Copyright</b>	Copyright ©2002-2018 Icetips Alta LLS
<b>Author</b>	Arnór Baldvinsson

Icetips Xplore enhances your end user experience by adding multiple options to the right click popup menu on your browses. Among other things it adds header sort, moving columns left and right, hiding columns, easy filtering of the data, output to comma separated files and html and printout of data.

It is very simple to add to your applications. One required global extension template sets it up for the application and then you can add Xplore to your browses as needed by adding a single procedure extension. It can also work with hand coded listboxes. Xplore is compatible with Clarion 6 to Clarion 10 but it is only compatible with ABC browses.

All strings in Icetips Xplore that are visible to the end user can be translated by using or modifying the Xplore.trn file. By default it uses XploreEN.trn for English, but there are language files for Dutch, German, Norwegian Portuguese and Spanish distributed with Icetips Xplore.

This documentation is for build 2018.10.332 released on October 14, 2018. Please refer to the "Support" tab on the templates and commented headers in the class files to verify that you have the correct documentation for the build that you are using.

Note that at the time of writing (September 10, 2011) the documentation is still very much under construction. We appreciate your patience but we also appreciate any feedback on the documentation that you have. Please don't hesitate to contact us if you have any suggestions or ideas for improvement.

**Part**

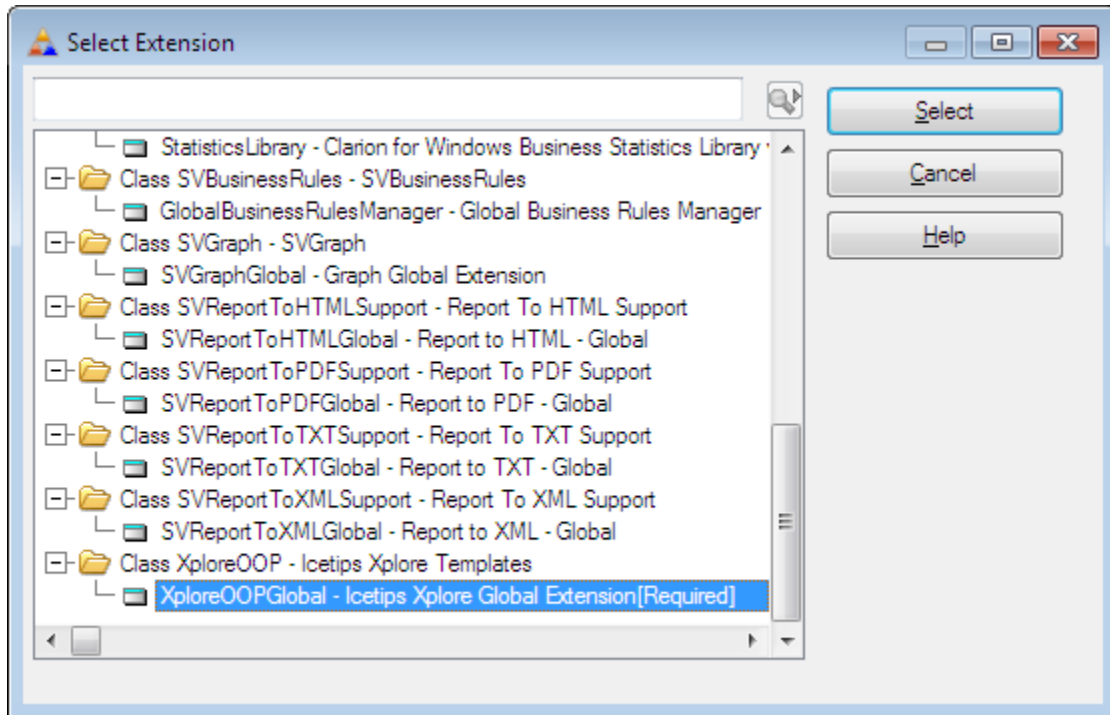


**Chapter 2 - Quick Start**

## 2 Quick Start

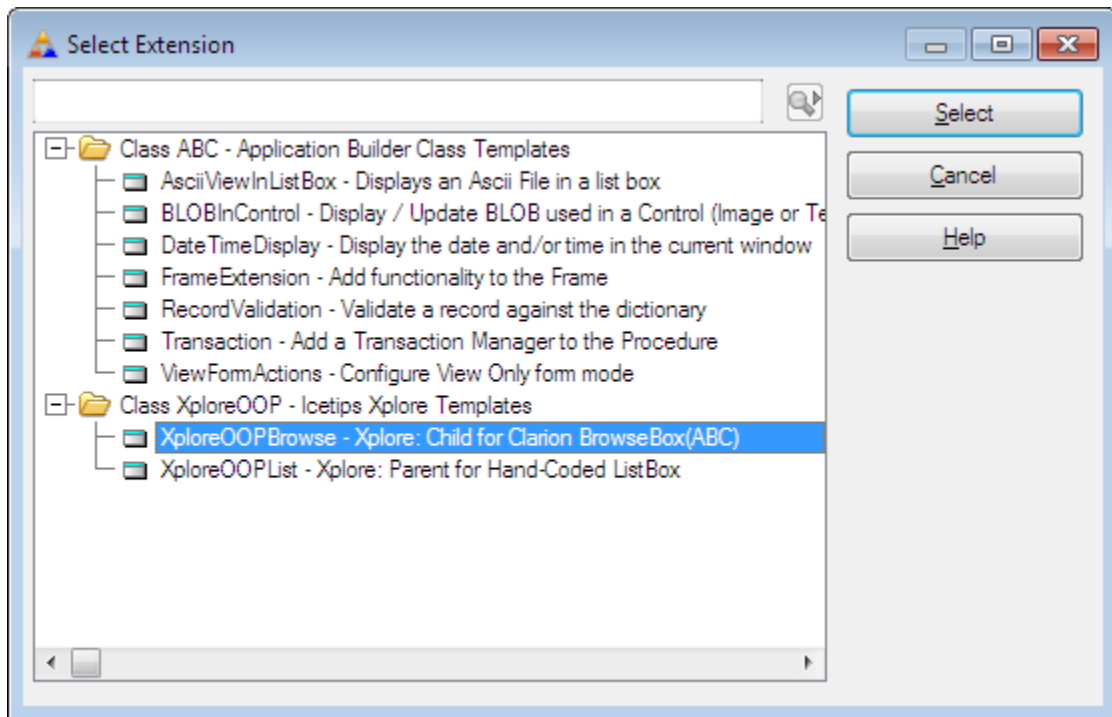
Implementing Icetips Xplore in your application is easy.

1. Add the Global "Icetips Xplore Global Extension[Required]" template.



2. Configure Xplore global settings
3. Go to the Extension Template section for your Browse procedure
4. Click on the "Browse on <filename>" section to select the browse control
5. Add the "Xplore: Child for Clarion BrowseBox(ABC)" template to the procedure





6. Configure Xplore local settings for the browse.

That's it!

**Part**



**Chapter 3 - Reference**

## 3 Reference

### 3.1 Templates

Icetips Xplore contains one global extension template and 4 procedure extension templates. **The global template is required and must be applied before you try to apply the procedure extension templates.**

The global template allows you to set up default settings for the procedure extensions that can be overridden in the procedure extension if you want. It also lets you set up previewers for the reports created by Xplore and set key codes to use to reset various settings applied by Xplore.

The procedure templates are used for different type of list boxes.

Xplore Browse Extension is used for ABC browses only. To add it you must first select the ABC Browse control template in the list of Extension templates and then add the Xplore extension. That ties it to the selected ABC browse. Once you have added the Xplore extension you can configure it any way you want.

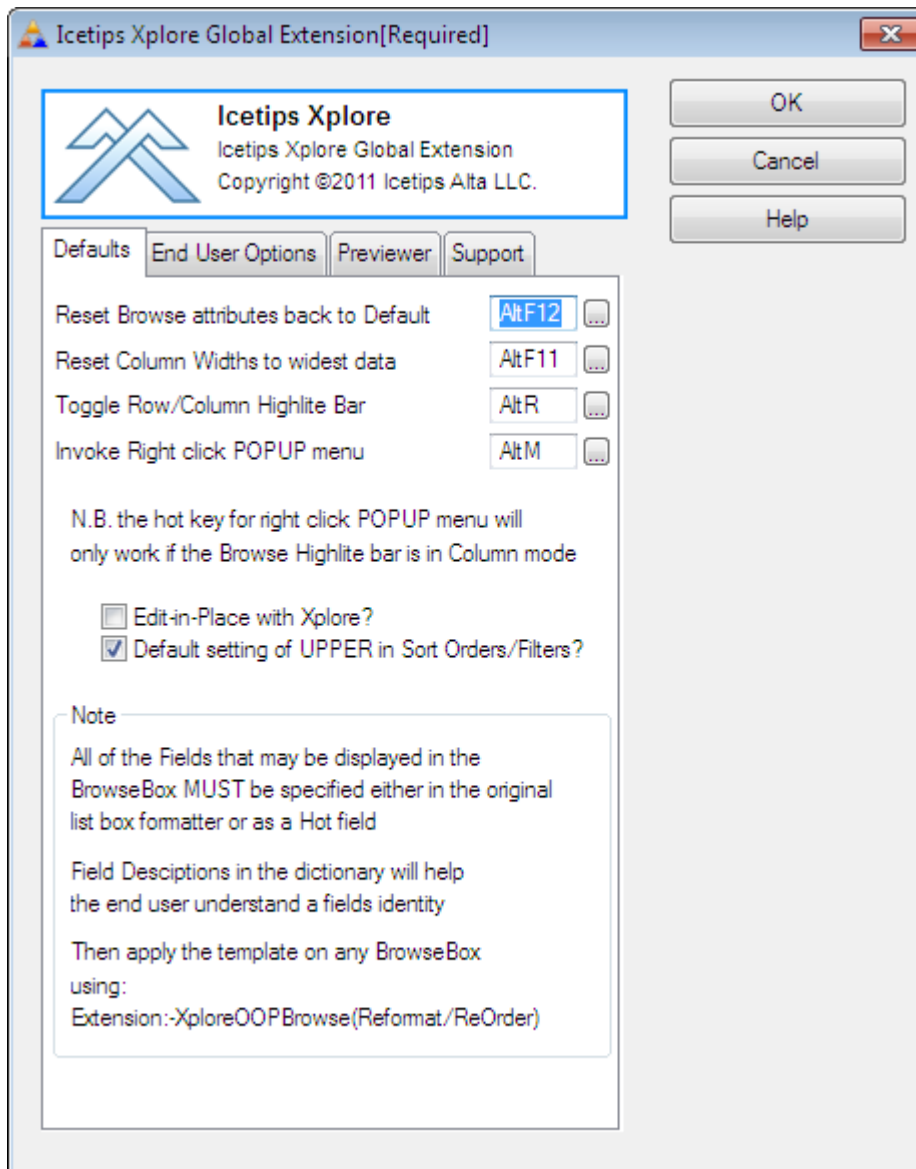
Xplore Listbox Extensions are used for hand coded list boxes only, not ABC browses. There are two templates, a parent template that ties Xplore to the list box and the Xplore template that ties to the parent template.

The next sections contain detailed information about those templates.

#### 3.1.1 Global Template

#### Templates

The Icetips Xplore global extension template is used to set up certain global options for Xplore. It also sets up default end-user options that can be overridden for each browse if needed.



The "Defaults" tab sets up several options that control how the browse works. First there are 4 hot keys that can be used to reset the browse format and column widths.

**Reset Browse attributes back to Default**

This hot key is used to reset the browse to it's original format and settings. Defaults to Alt-F12

**Reset Column Widths to widest data**

This hot key is used to set the width of each column to the width of the widest data for that column. Defaults to Alt-F11

**Toggle Row/Column Highlight Bar**

This hot key is used to toggle between row and column mode. In column mode only one cell in the list box grid is selected. In row mode an entire row is selected. Defaults to Alt-R

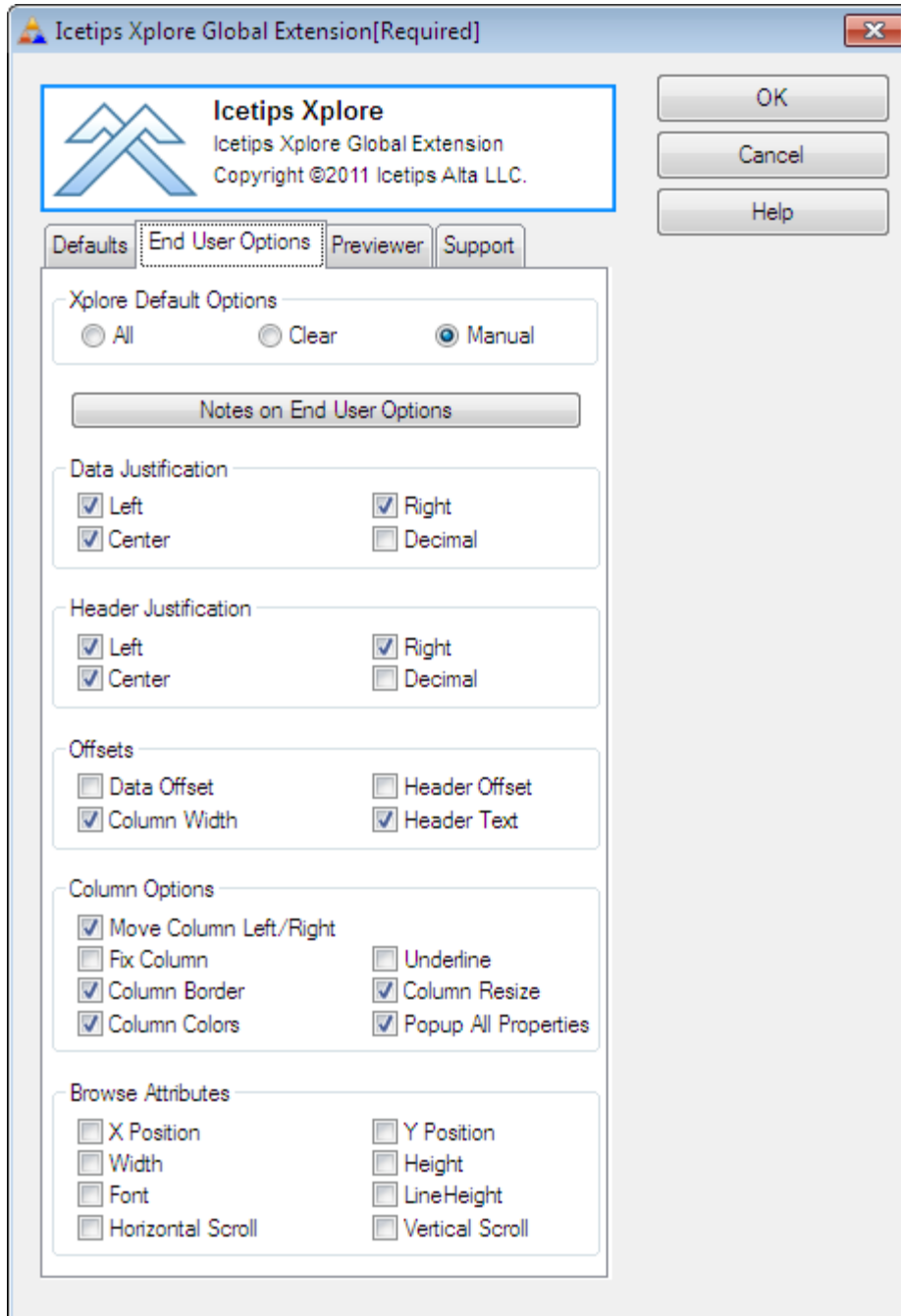
**Invoke Right click POPUP menu**

This hotkey is used to invoke the popup menu. Note that the windows popup key on the keyboard can also be used. This hotkey is only valid if the list box is in column mode. Defaults to Alt-M

**Edit-In-Place with Xplore?**

This enables Edit-in-place with Xplore.

**3.1.1.2 Global - End User Options**

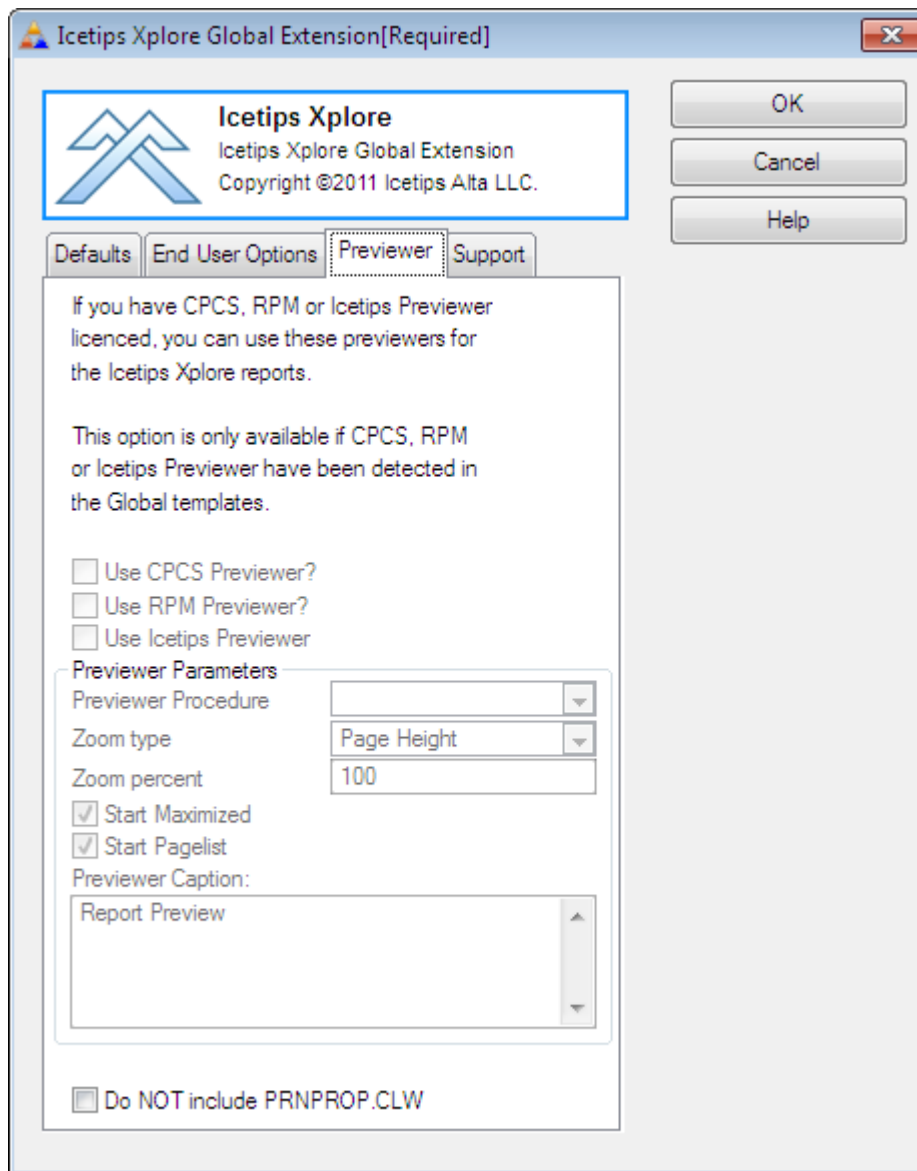


The "End User Options" tab sets up the options that the end user sees in the Xplore Menu at runtime. Each checkbox corresponds to a menu item. If the checkbox for that menu item is unchecked, the menu item is not added to the menu and the end user cannot use it. The "End User Options" in the global extension only set it up to use as default settings in the Xplore Browse Extension template. The image above shows the default settings for the global template. For more information about the individual menu items please see the Xplore Menu section.

The "Xplore Default Options" radio group at the top allows you to check all the checkboxes (All), clear all of them (Clear), or set them individually (Manual)

### 3.1.1.3 Global - Previewer

Templates - Global Template

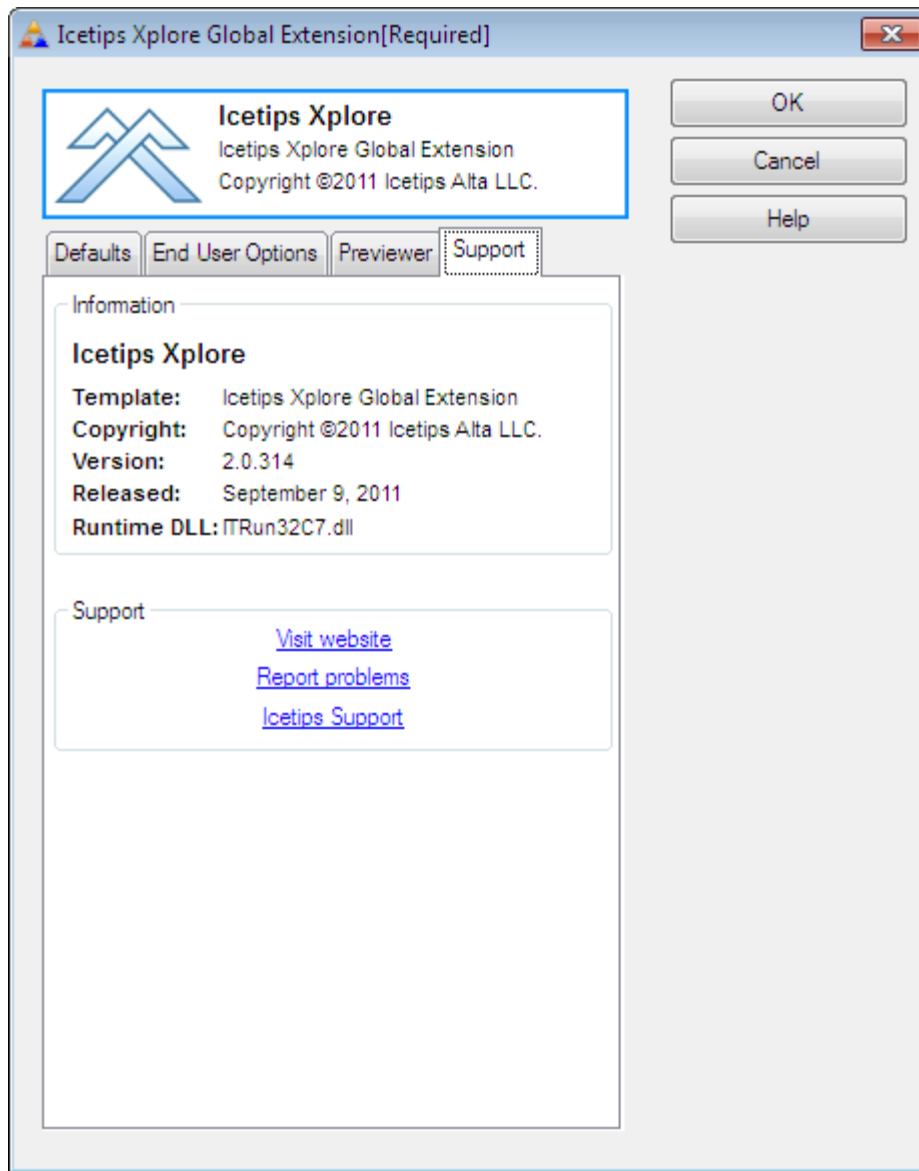


On the "Previewers" tab you set up what previewer you want to use with Icetips Xplore. Icetips Xplore makes it possible to print the contents of the current browse screen or the entire browse dataset. Setting up a previewer is necessary if you want to use any of the 3 previewers that Icetips Xplore

supports, Icetips Previewer, CPCS and RPM. Icetips Xplore will detect what previewers are available in your application and make the proper options available depending on what it finds. If you are using Icetips Previewer it will give you similar prompts to the Icetips Report Extension template, i.e. for previewer procedure, zoom, etc.

3.1.1.4 Global - Support

Templates - Global Template



On the "Support" tab you get information about what version and release date of the product is and the name of the template that you are working with. This is important if or when you need to report any issues to us. Other information may be detailed on this tab and the information will differ slightly between your template and the screenshot above.

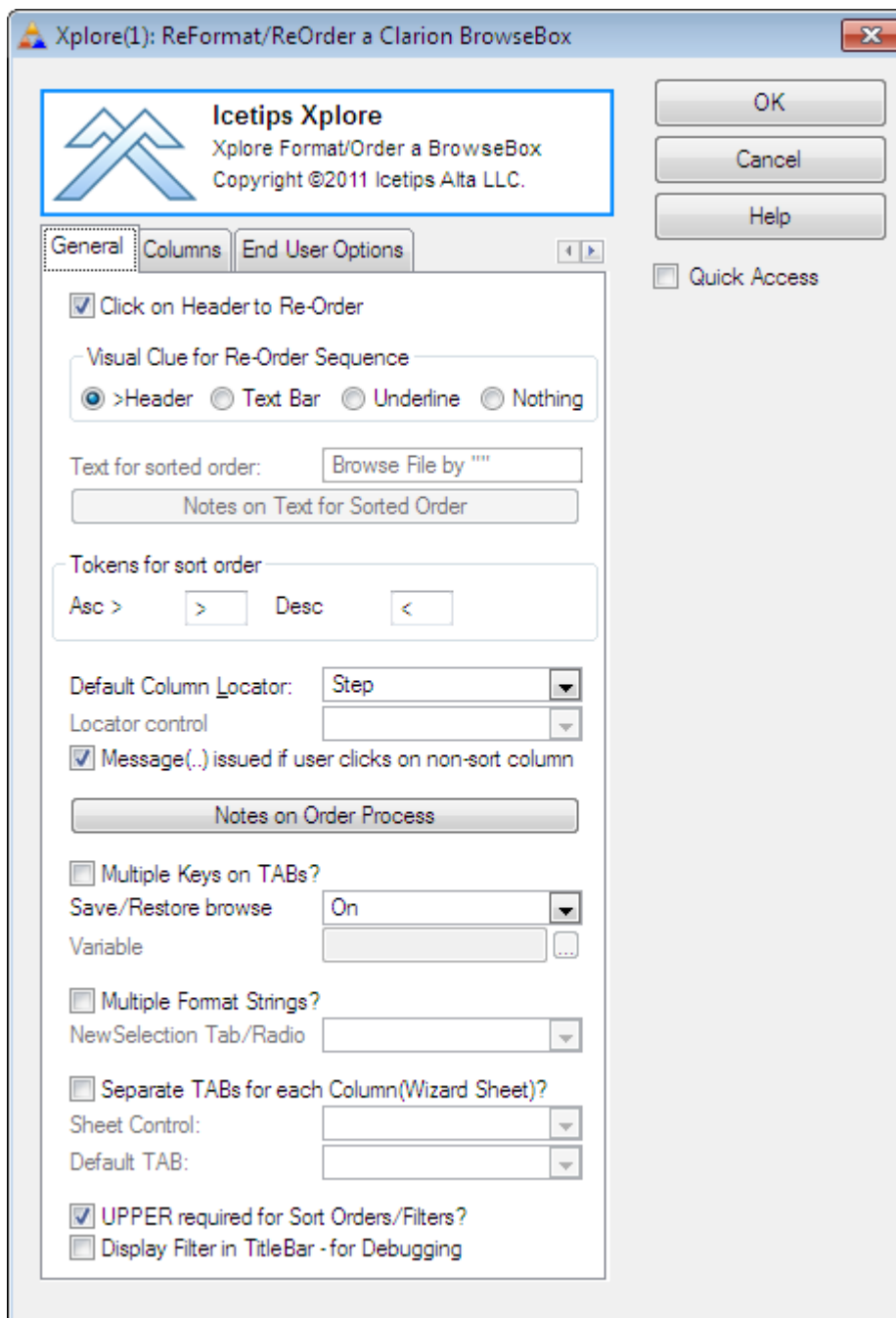
3.1.2 Xplore Browse Extension

Templates

Icetips Xplore allows you to make a lot of changes and customizations to the way the browses behave.

## 3.1.2.1 Browse General

Templates - Xplore Browse Extension



**Click on Header to Re-Order** If this is checked, the end user can re-order the list by clicking on the header.

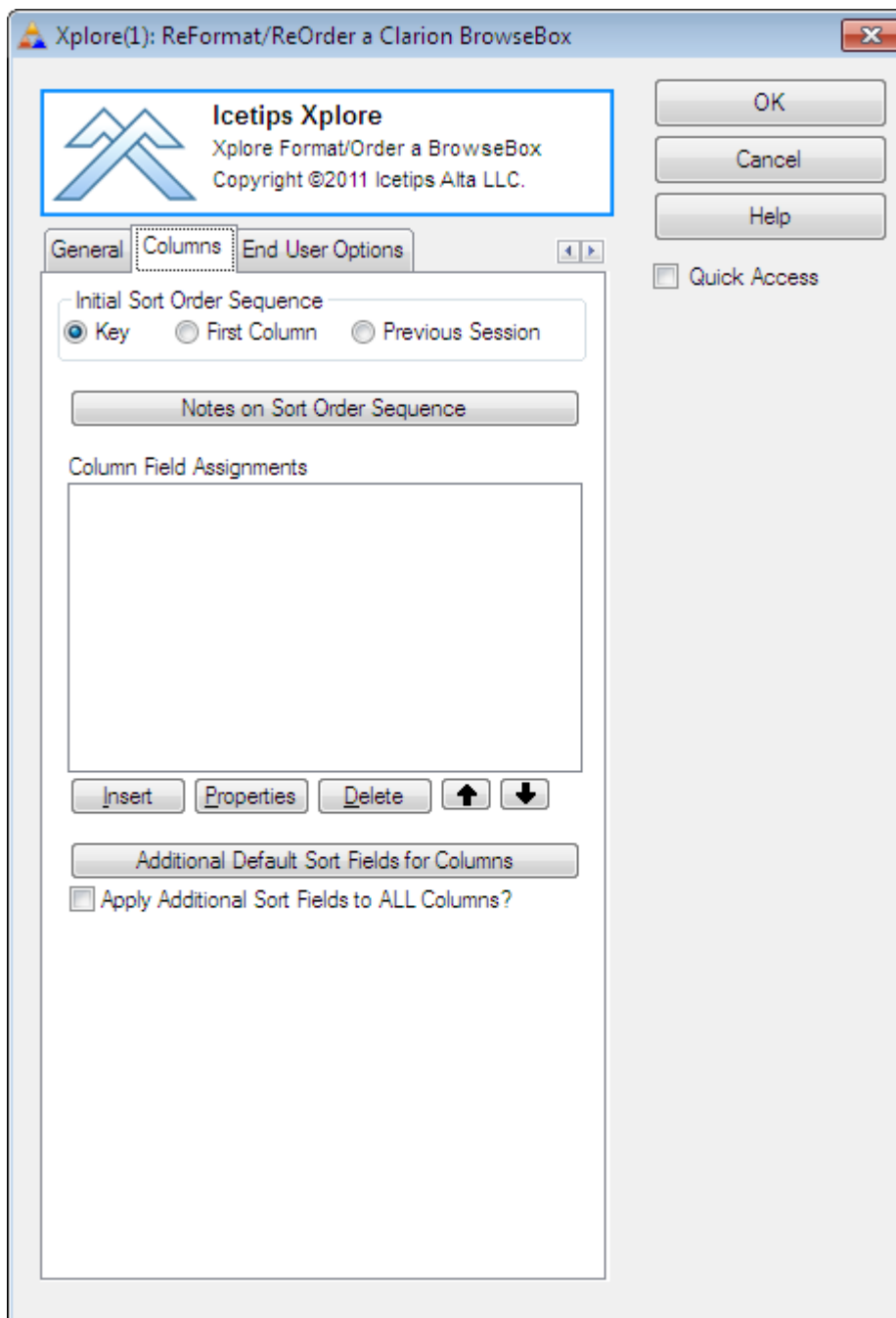
**Visual Clue for Re-Order Seq.** Indicates how the sort order is indicated.  
 ">Header" - The sort column header is preceded with the character specified in the "Tokens for sort order" below. This is the default setting.



	<p>"Text bar" - The sort column header text and "(Ascending)" or "(Descending)" is appended to the window title.</p> <p>"Underline" - The sort column text is underlined</p> <p>"Nothing" - No indication of which column is the sort column.</p>
<b>Text for sorted order:</b>	This text is used if the Visual Clue is set to "Text bar" This text will be used for the window title and the column header will get inserted between the "" followed by "(Ascending)" or "(Descending)"
<b>Tokens for sort order:</b>	These two characters/tokens are used to indicate the sort order when the ">Header" option is used for the Visual Clue. It defaults to ">" for ascending and "<" for descending.
<b>Default Column Locator:</b>	The default column locator type. This can be "None", "Step", "Entry", "Incremental" or "Filtered"
<b>Locator control:</b>	Control to use as a locator. This can be a ENTRY, SPIN og STRING control.
<b>Message(...) issued...</b>	If this is checked a Message(...) if the user clicks on a header that cannot be sorted. The text for the message is specified in the Xplore.trn translation file as eXNoSort ("Data cannot be ordered on column") and the message caption as eXMsgBar ("Xplore Template - Re-Order Option")
<b>Multiple Keys on TABs?</b>	Specifies whether there are multiple TAB selections on the window (as generated by the standard Clarion Wizard) with a new key for each TAB.
<b>Save/Restore browse</b>	Determines if the browse settings should be saved and restored. The options are "On", "Off" and "Variable". If "Variable" is selected the "Variable" field below is enabled and you can select a variable that will control if the browse settings are saved and restored. Default is "On"
<b>Variable</b>	Enabled if Save/Restore is set to "Variable". Allows you to select a variable to control if the browse settings are saved or restored.
<b>Multiple Format Strings?</b>	This allows you to specify multiple format strings and what control triggers different controls. Controls that can trigger different formats are TABs and RADIO buttons.
<b>NewSelection Tab/Radio</b>	Enabled if the "Multiple Format Strings?" is checked. This lets you select a SHEET or RADIO group that is then used to determine what format string is used.
<b>Separate TABs for...</b>	Allows you to specify a different TAB (and hence, different controls) for each column. The new TAB will be invoked when the end-user clicks on the column header to invoke its sort order.
<b>Sheet Control:</b>	Select sheet control for tabs
<b>Default TAB:</b>	Requires you to specify which TAB is the default for each column. Individual columns are then overridden using the dialog on the template Columns TAB.
<b>UPPER required for...</b>	If this is checked it indicates that the upper case is used when sorting data in alphabetical order.
<b>Display filter in title...</b>	This option is only for debugging purposes and will display the currently active filter in the window title bar.

## 3.1.2.2 Browse Columns

Templates - Xplore Browse Extension



On the Columns tab there are options to set each individual column properties and behaviour.

**Initial Sort Order...**

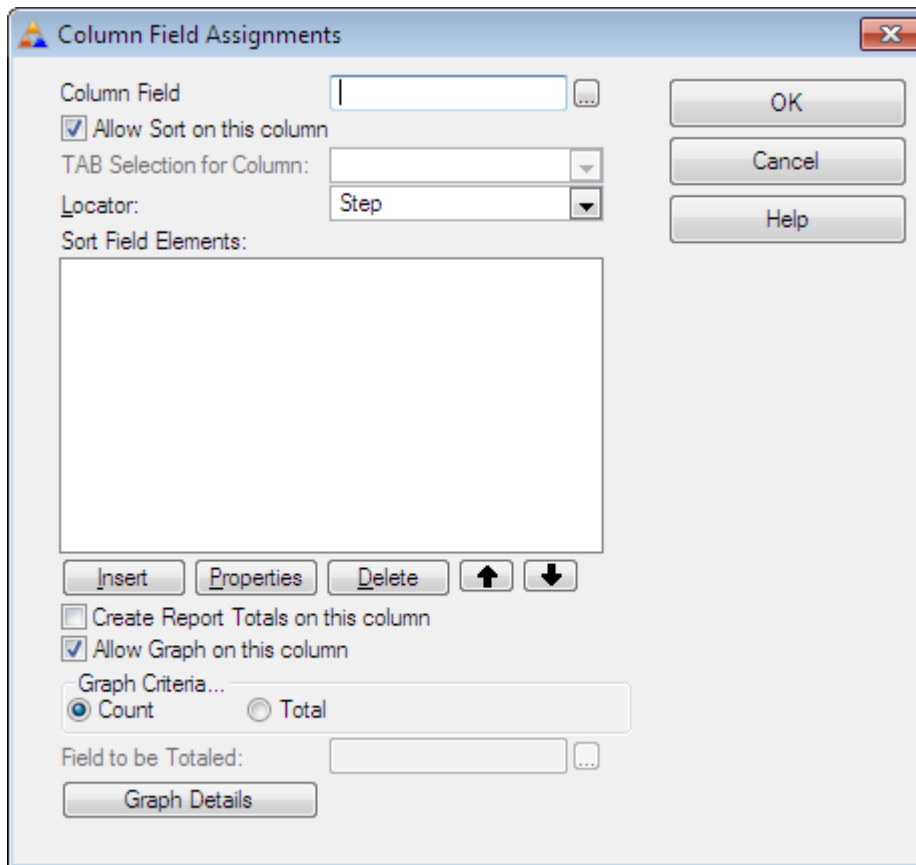
This sets what should be the initial sort order sequence. It can be "Key" indicating that the key in the File Schematic should be used, "First column" indicating that the first column should be the active sort order, or it can be "Previous Session" to restore the last used sorting order. Default setting is "Key"

---

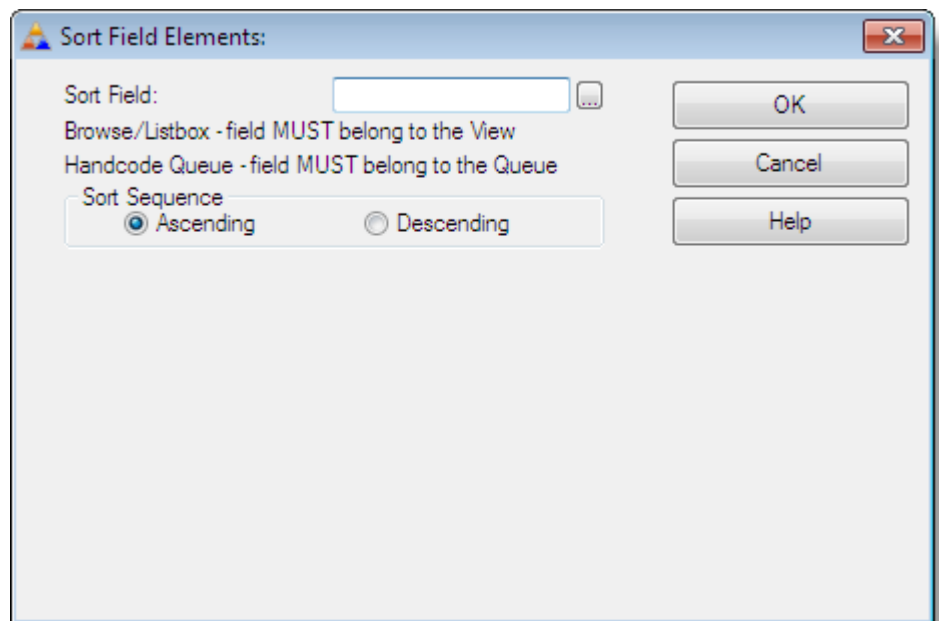
<b>Column Field Assignments</b>	This list allows you to modify the defaults for each column. Note that you only need to do this for columns that you want to alter, you do not need to do this for each column!
<b>Additional Default Sort...</b>	Allows you to define any number of fields which will automatically be appended to each column sort order. This provides a quick method of making each record unique in a sort order display.
<b>Apply Additional Sort...</b>	If checked it will apply the fields to all columns. If not checked, then the additional sort order fields will only be applied to columns which do not have any fields specified in the "Sort Field Elements" of the "Column Field Assignments".

#### 3.1.2.2.1 Column Field Assignments

You only need to use the Column Field Assignment if you have local variable in your listbox. This allows you to specify exactly how that column should behave when the user clicks on the header, what fields to use to sort it and how to interpret this column for reports and graphs.



- Column field** Select the field to display in the listbox. Note that this **must be a local variable** and cannot be a field in the View.
- Allow Sort on this column** Indicates if the header sort is allowed for this column or not. If this is unchecked, the end user cannot re-order the browse based on this column. Defaults to checked.
- TAB Selection for Column** This drop down will only be active if you have specified "Seperate TABs for each Column(Wizard Sheet)" on the General tab. This allows the developer to select a different TAB for this particular column.
- Locator** Locator type to use for this column. The available options are "None", "Step", "Entry", "Incremental" and "Filtered". Default locator type is "Step" Filtered is a nice option for string fields.
- Sort Field Elements** Here you can specify the order to use for the column. You can use one field or multiple fields and determine which direction, ascending or descending, each of them uses, just like when you build a key in the dictionary. This allows you to build more complex sort orders for a column than the data in that column indicates. You can insert, change and delete elements from the order and also move them up and down in the list to suit your needs. Note that if you enable sorting on this column then the fields added to the "Sort Field Elements" must be in the view as either fields in the browse or hotfields.

**Create Report Totals...**

Gives you the option of creating totals on this column at the end of the built-in view report. Usually this should only be specified on columns showing numeric data.

**Allow Graph on this column**

Specifies whether the end-user can create a bar graph of the column data. e.g. if the column is displaying 'Country', then it might be useful to create a bar graph of which countries the current filtered view has selected. It would not be logical to create a graph of a field such as an 'Address' column. Default is off.

**Graph Criteria...**

Indicates if the graph should show the "Count" of each occurrence of data in the column or a "Total". Default is "Count"

**Field to be Totaled:**

Enabled if "Total" is selected in the "Graph Criteria..." above. Select the data field to be totalled.

**Graph Details**

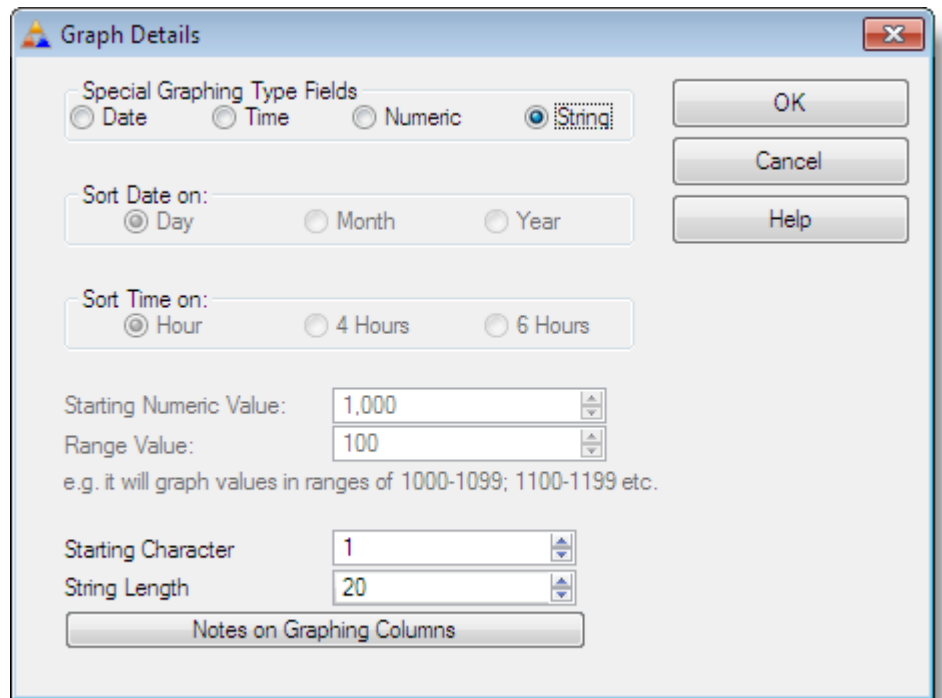
Opens a window with information on how to interpret the data for the graph. Icetips Xplore can handle Date, Time and Sub(String,n,m) If you need anything more complex, just enter your own code into the embed **"Xplore: Modify Column String for Graph"**

**"Date"** columns can graph on Day of the Week; Month of the Year; or by Year.

**"Time"** columns can graph by Hour; 4 Hour segments or 6 Hour segments.

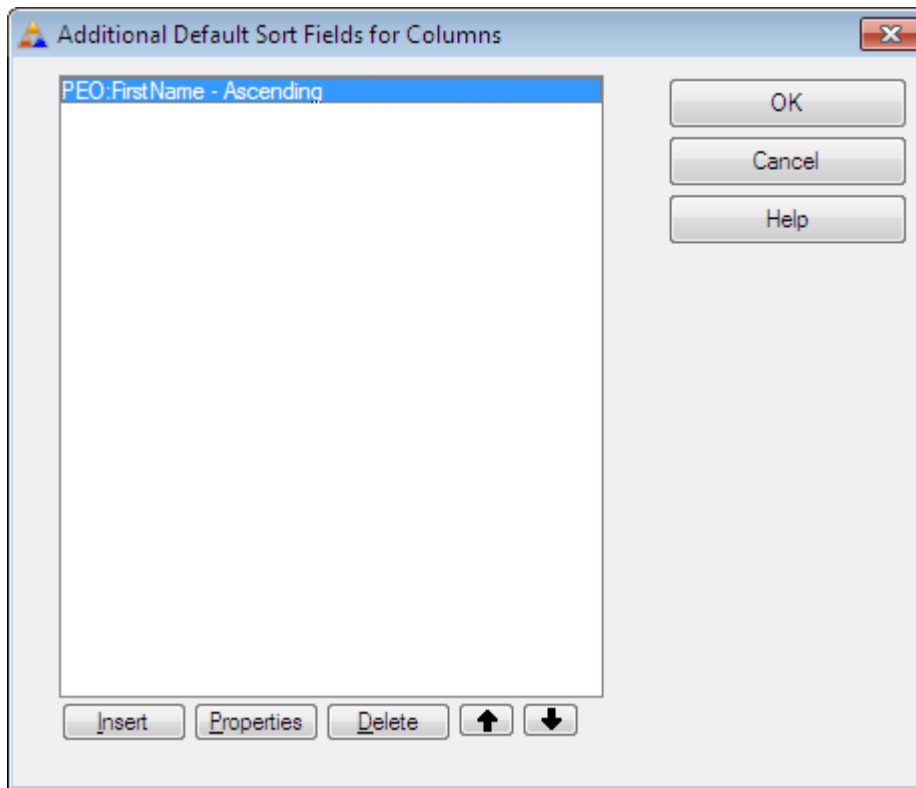
**"Numeric"** columns allow specification of a range along with a starting value.

**"String"** columns will graph on any simple string slice.

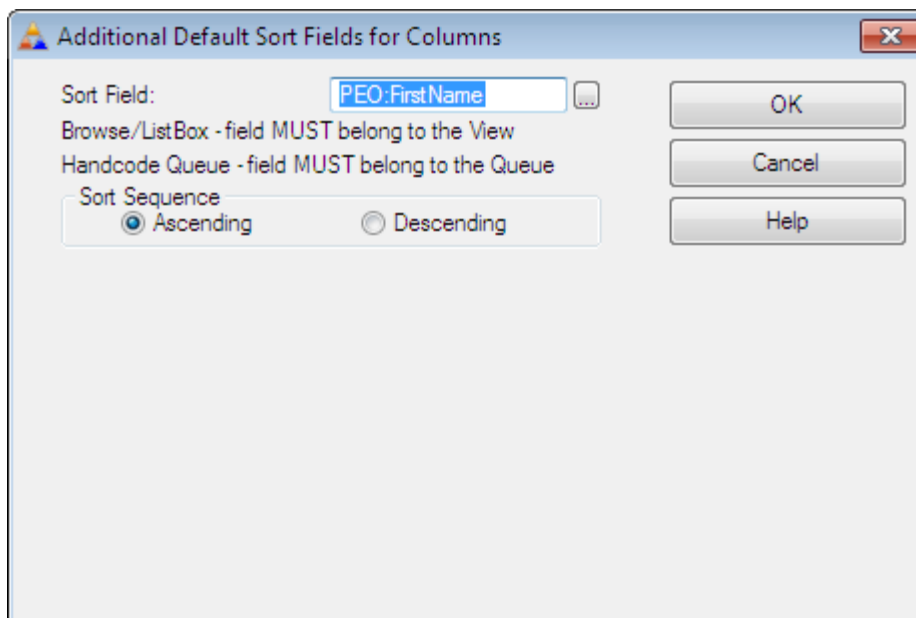


#### 3.1.2.2.2 Additional Sort Fields

This option allows you to define any number of fields which will automatically be appended to each column sort order. This provides a quick method of making each record unique in a sort order display.

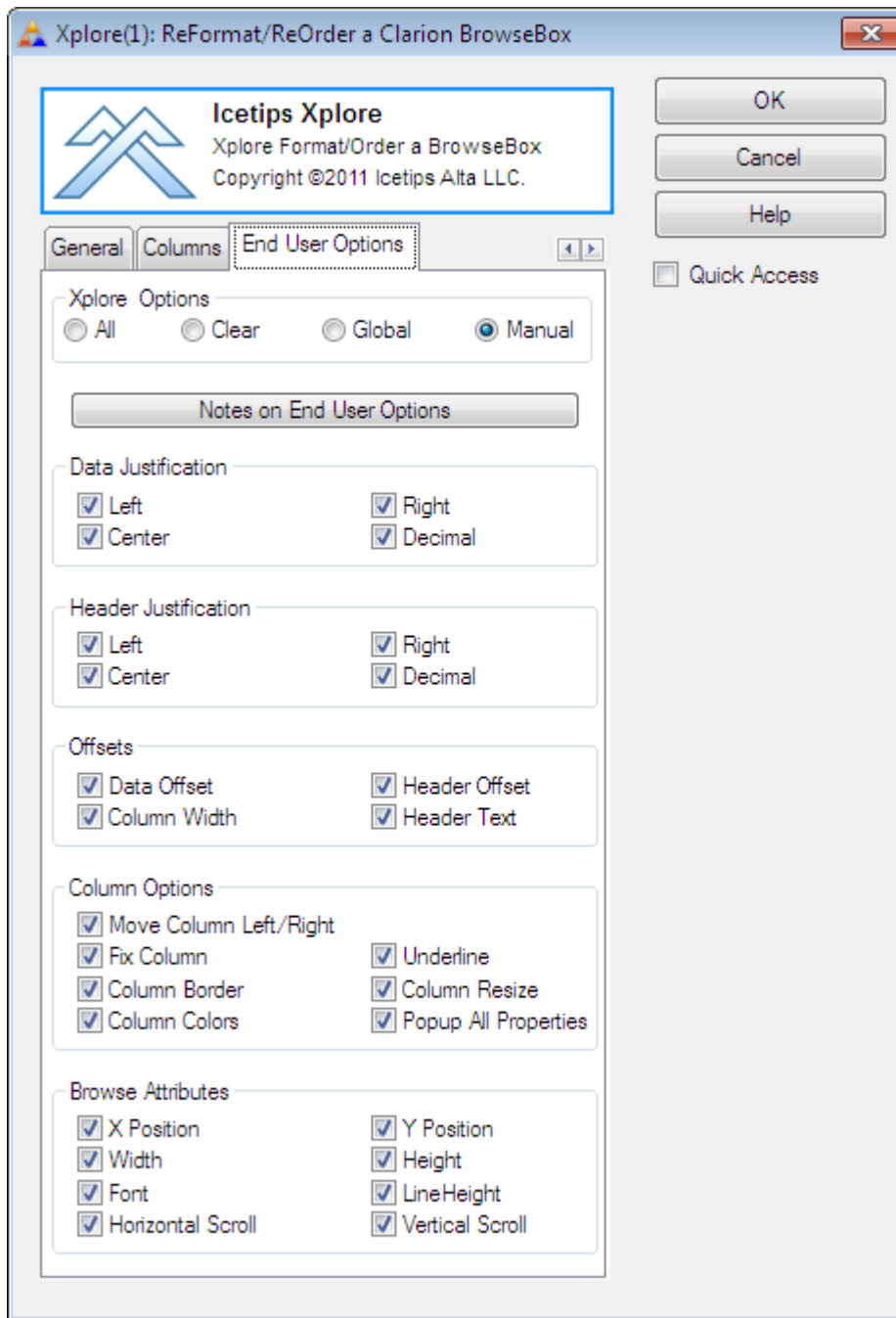


You can add, change and delete columns from this list as well as move them up and down to indicate priority in the search order. Each field can be set to either ascending or descending depending on what order is appropriate, see below.



## 3.1.2.3 Browse End User Options

Templates - Xplore Browse Extension



The options on this tab allow you to specify exactly what items and options the end user sees in the Xplore Menu at runtime. Please keep in mind that the end user will always be able to perform the following three actions even if everything here is unchecked:

1. Shift columns right and left by dragging the column header
2. Reset the browse box back to its default format settings



### 3. Create output of the brows3e via page/view report or graph

Most of the options here are self explanatory, but there are some options that need a little more detail.

#### **Xplore Options**

This sets the checkboxes on this tab based on the criteria selected here:

<b>All</b>	Checks all the checkboxes on the "End User Options" tab
<b>Clear</b>	Unchecks (clears) all the checkboxes on the "End User Options" tab
<b>Global</b>	Sets all the checkboxes like they are on the "Global End User Options"
<b>Manual</b>	Allows you to set them manually

#### **Offsets**

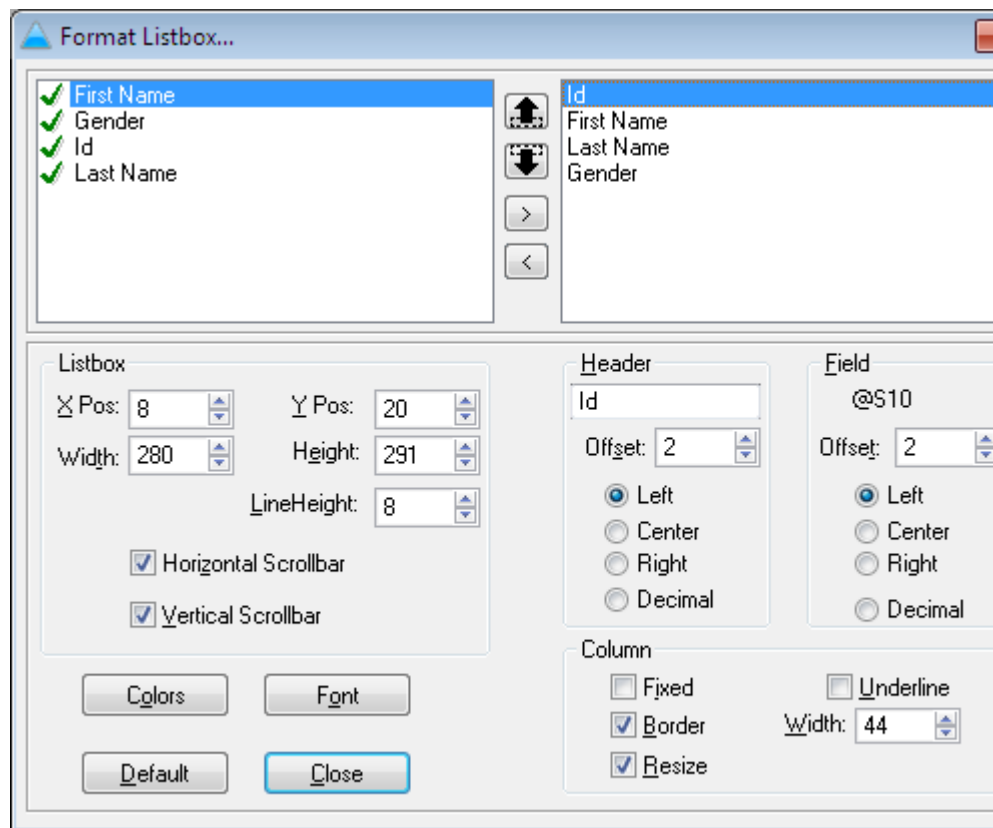
This changes the alignment of the data or header text in relationship to the column left and right borders and the justification settings.

<b>Data Offset</b>	This allows the end user to change the offset of the content of the column. Depending on justification it will push the data in from the left or right.
<b>Header Offset</b>	This allows the end user to change the offset of the header text of the column. Depending on justification it will push the header in from the left or right.
<b>Header Text</b>	This allows the end user to change the text for the header.

#### **Column Options**

The options here change the way the selected column looks like. The end user just right clicks inside the boundaries of the column to set the properties for that column

<b>Move Column Left/Right</b>	This option allows the user to move columns left/right to rearrange the listbox.
<b>Popup All Properties</b>	This will show a window for the end user to make several modifications to the column. Here the end user can modify various settings all in one go.

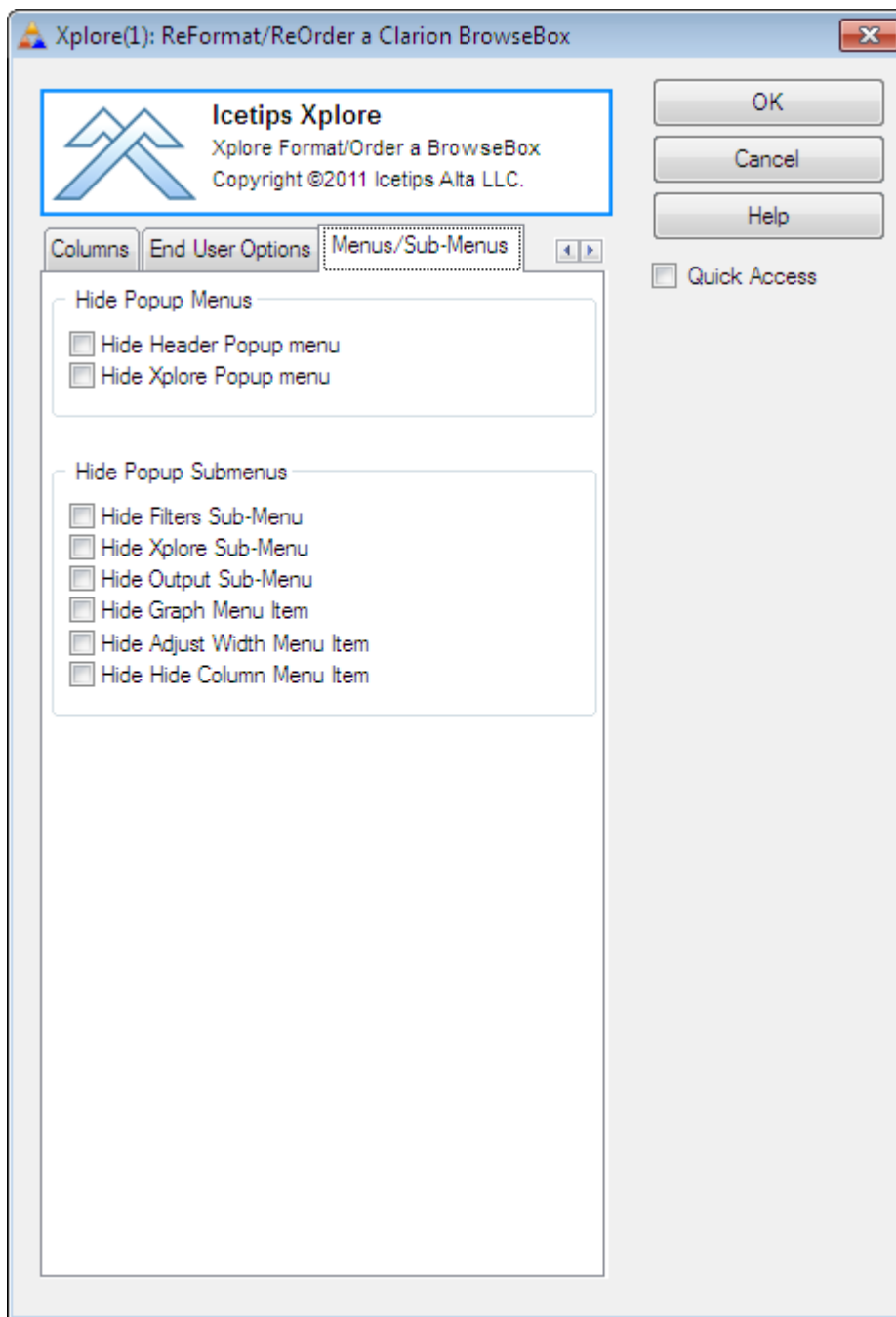


If the end user wants to go back to what the browse looked like, click on the [Default] button will restore the browse to original settings.

### **Browse Attributes**

These attributes appear under a "Listbox" item in the Xplore menu and apply to the entire list box control. The end user can move the list box around, size it, change the font and line height to make the list box look like he or she wants it to be.

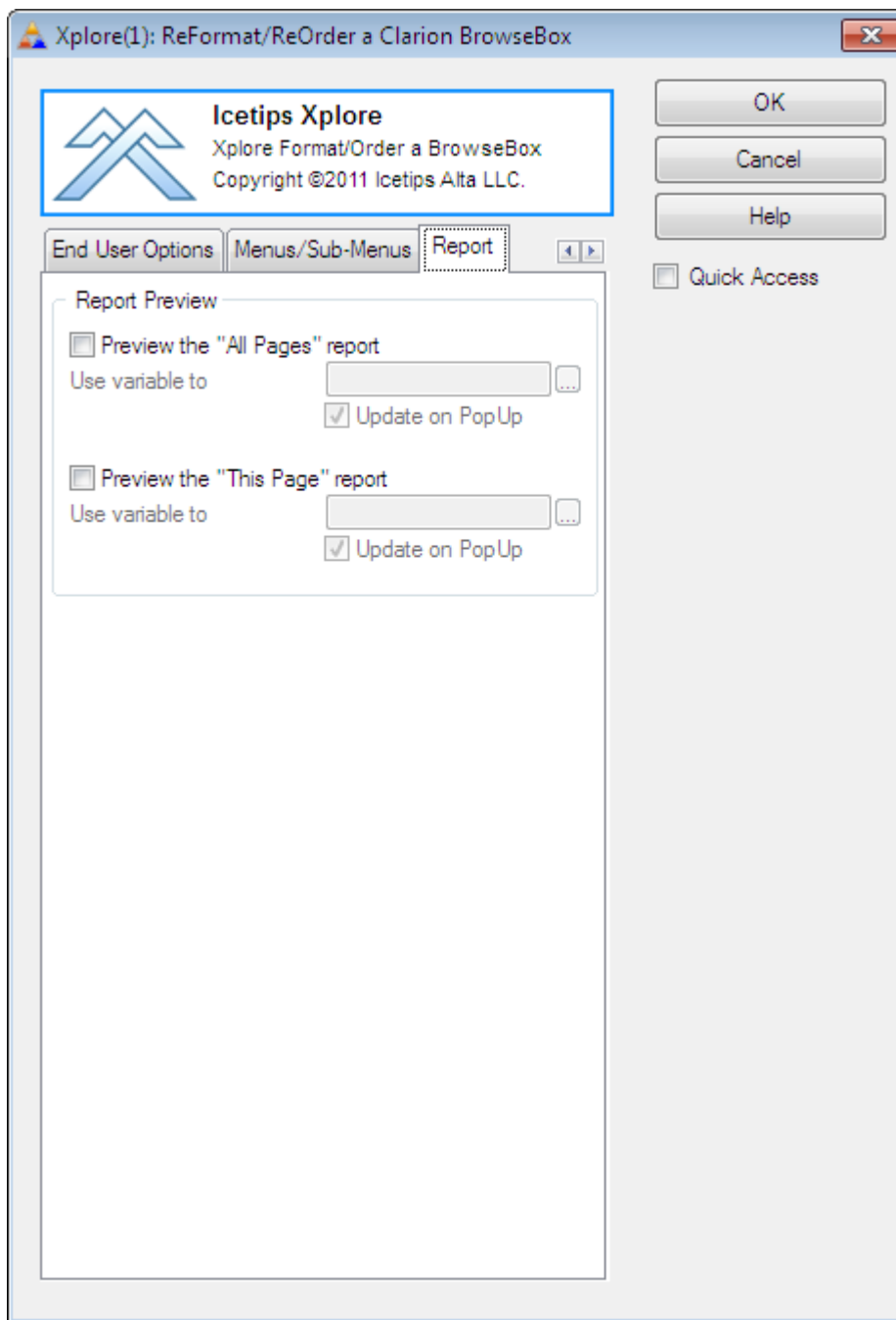
3.1.2.4 Browse Menus



On the "Menus/Sub-Menus" tab are options to hide certain menu items. Please see the Xplore Menu section for more information about the individual menu options.

## 3.1.2.5 Browse Reports

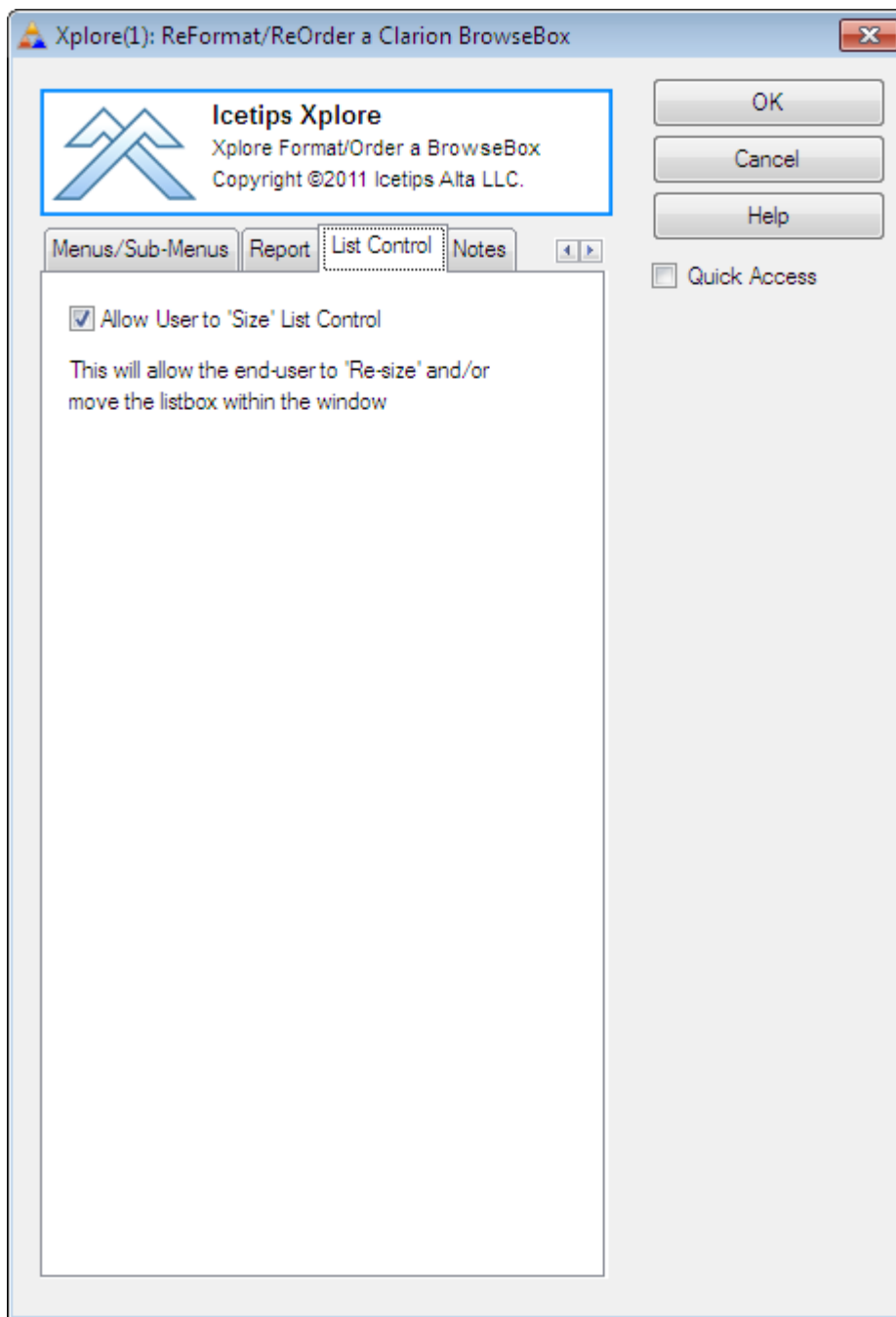
Templates - Xplore Browse Extension



On this tab you specify if you want to preview the reports that are available in Xplore. To be able to set this, you must select a previewer in the Global extension template. You can specify if you want to enable a preview on both, either or neither of the reports and if you want to use a variable to control it.

3.1.2.6 Browse List Control

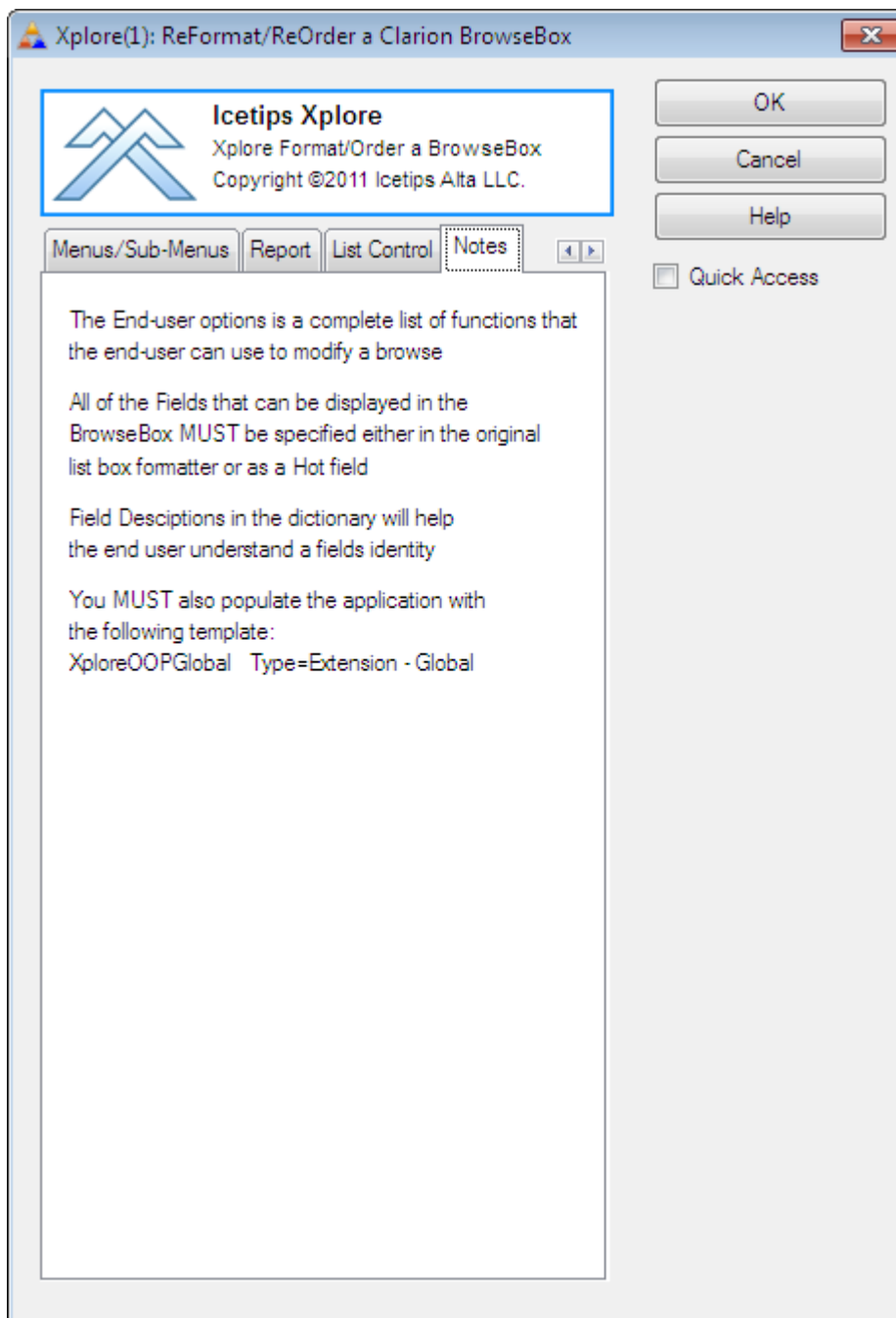
Templates - Xplore Browse Extension



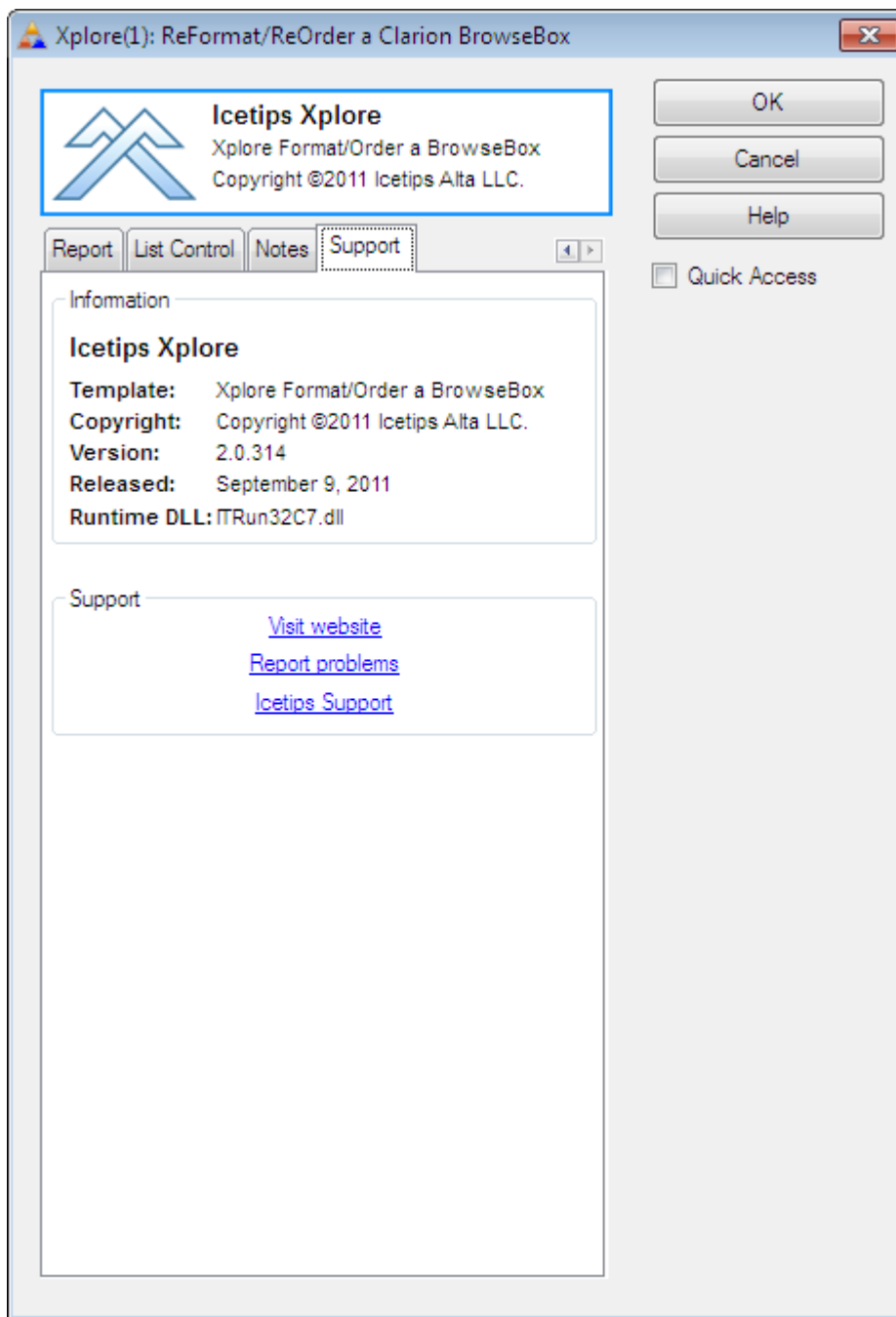
On this tab you can specify if you want to allow the end user to size or move the list box control.

## 3.1.2.7 Browse Notes

Templates - Xplore Browse Extension



3.1.2.8 Browse Support



On the "Support" tab you get information about what version and release date of the product is and the name of the template that you are working with. This is important if or when you need to report any issues to us. Other information may be detailed on this tab and the information will differ slightly between your template and the screenshot above.

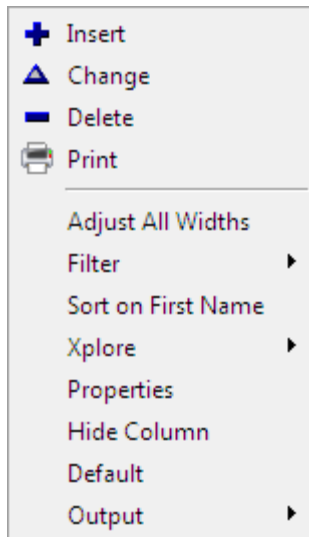
**3.1.3 Xplore Listbox Extension****Templates**

Icetips Xplore comes with a template to add Xplore to a listbox that does not use ABC Browse. To make that happen you need to first add "Xplore: Parent for a Hand-coded ListBox" template. Select this template after you add it, and then add "Xplore: ReFormat/ReOrder a hand-coded ListBox" extension. This will give you all the same options for a hand coded listbox as for an ABC browse control!



## 3.2 Xplore Menu (runtime)

Icetips Xplore adds several menu items to the standard popup menu that is available in the Clarion browses. Several of those items have sub-menus or call additional dialog windows. Following are screenshots of the various menus and windows with short descriptions of what each item does. In the screenshots, the first 4 items, Insert, Change, Delete and Print, are part of the default menu and are not related to Icetips Xplore.



### Adjust All Widths

This option adjusts the width of each column based on the calculated maximum width to accommodate the longest data string for that column

### Filter

Opens the Filter Menu

### Sort on <Column Header>

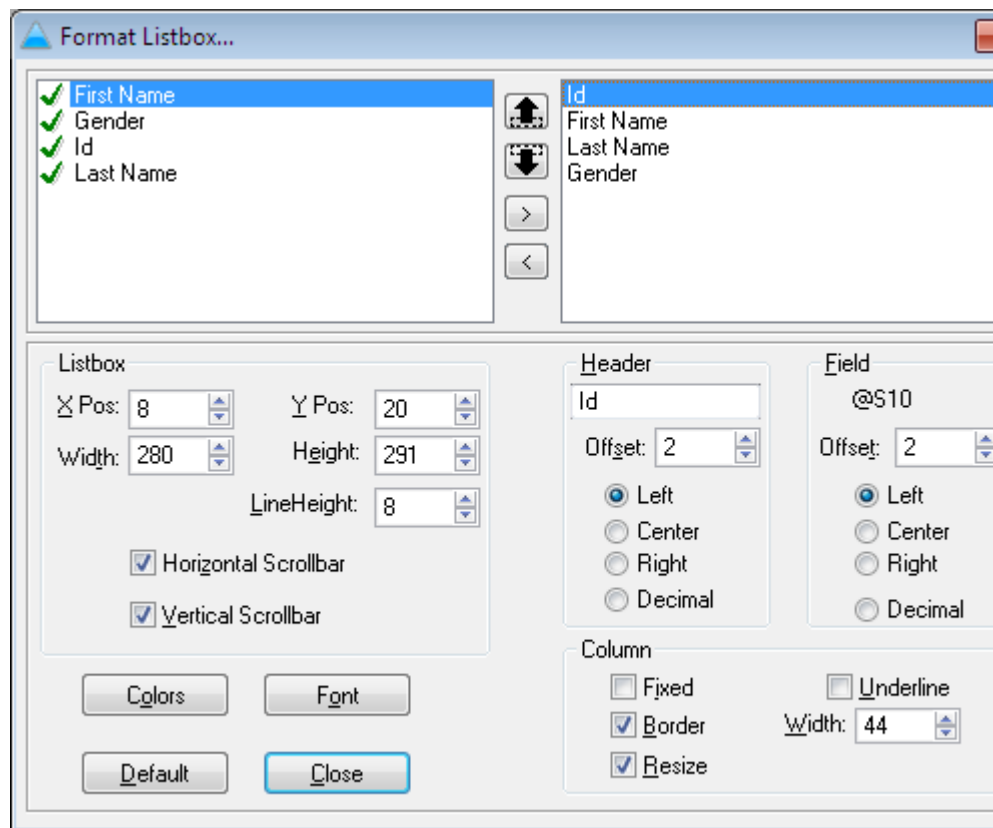
Sorts on the selected column.

### Xplore

Opens the Xplore Menu

### Properties

Opens the Xplore "Format Listbox..." window where the properties for the column and the listbox can be set easily in one place.



**Hide Column**

Hides the selected column

**Default**

Resets the column to default settings

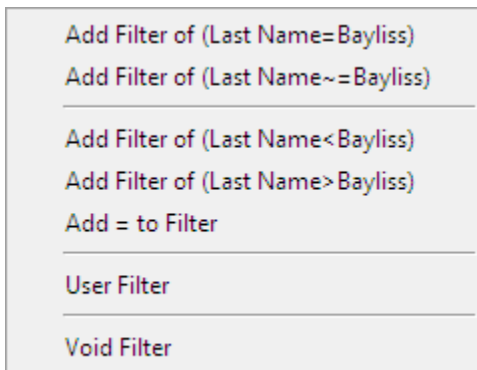
**Output**

Opens the Xplore Output menu

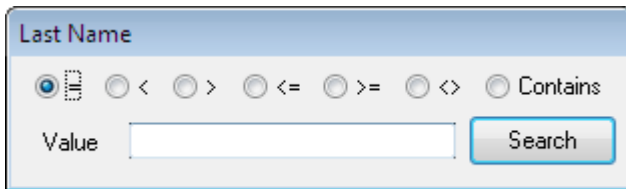
### 3.2.1 Filter Menu

### Xplore Menu (runtime)

The filter menu allows the end user to immediately filter the browse based on the column (s)he clicked in and the value of the selected row. The filter is in effect until the "Void Filter" is used to remove the filter. Four forms are available: Equal (=), Not Equal (~=), Less than (<) and Greater than (>) In addition "Add = to Filter" works with the < and > to make it include the selected value. In the menu below, using > would include everything with last name > "Bayliss" If the "Add = to Filter" is checked, then it would include everything with last name => "Bayliss"



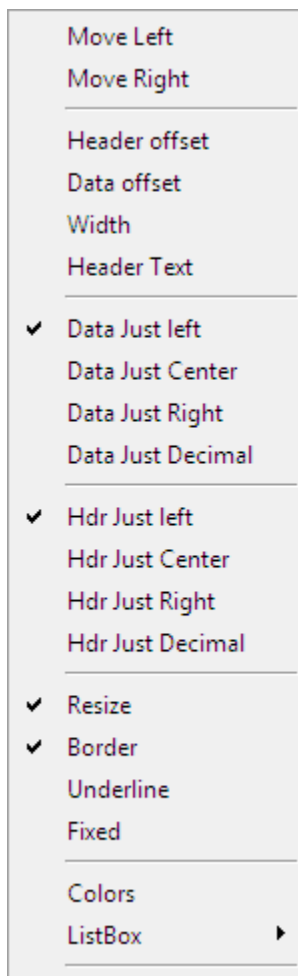
The end user can also use the "User Filter" and is then presented with a window with several options to filter with and a value to type in. This method has one additional option that is not available directly in the menu and that is the "Contains" which will find anything that contains the entered value.



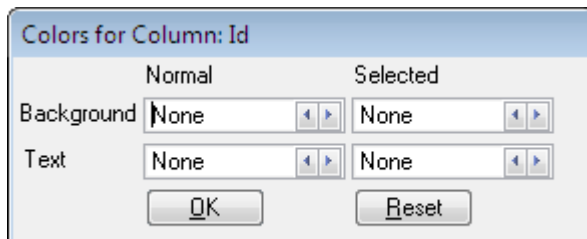
### 3.2.2 Xplore Menu

### Xplore Menu (runtime)

The Xplore menu allows the end user to modify the column and the list box control itself. Properties of the column, such as header and data offset, width, header text, data justification, header justification, resize, border, underline and fixed can be change.



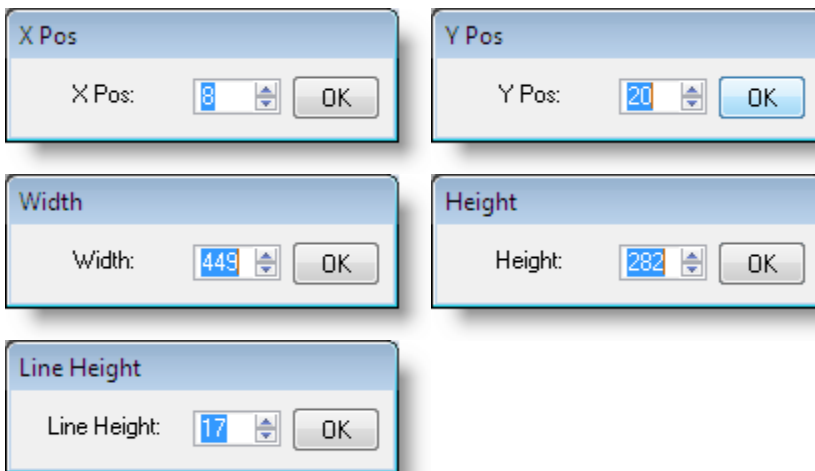
Colors for the column can also be changed.



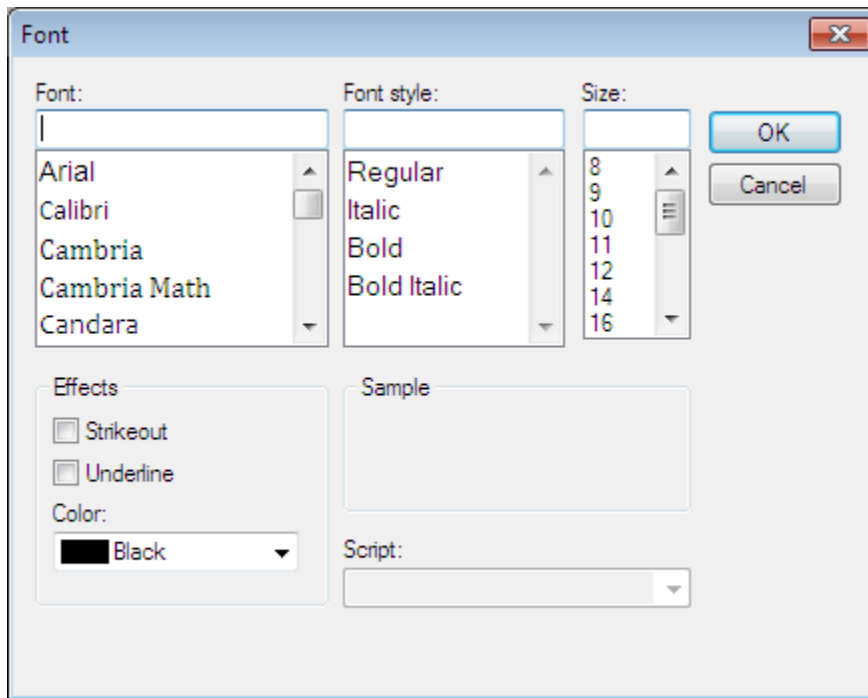
The ListBox menu at the bottom offers several options to modify the listbox control itself. Such as changing its X and Y position as well as width and height. Note that this may cause issues with some window resize code and templates as they may get confused when the control all of a sudden has changed size and may apply the wrong size to it when the window is sized!



The first 4 options as well as the Line Height option open small dialog windows where the end user can enter the X position, Y position, width, height and line height for the list box control. See screenshots below.



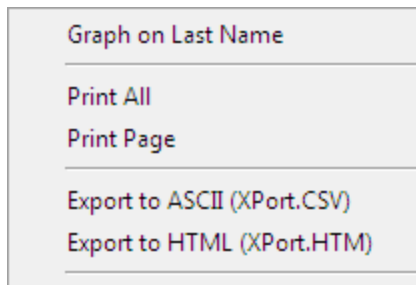
The Font option opens a standard Clarion Font Dialog where the font for the listbox can be changed.



### 3.2.3 Output Menu

### Xplore Menu (runtime)

The Output menu gives the end user an option to take the content of the browse and print it, create a graph on it or export it.




Current options are to create a graph which has an "Output" button which creates the graph as a bitmap image on the clipboard so it can be pasted into documents.

The data can also be sent to a report that is constructed on the fly to try to accommodate the data in the browse using the same formatting information as the browse uses. It can be either "All" or "Page" All will print all the data available in the dataset, i.e. everything that can be browsed with the filters being applied. Page will only print the records visible in the listbox.

#### 3.2.3.1 Export to CSV

#### Xplore Menu (runtime) - Output Menu

Export to ASCII takes the entire data set and exports it to a comma separated file. By default the filename is XPort.CSV in the application folder. However it can be changed by changing the value of the AsciiFileName property of the Xplore Class.



```
XPort.CSV - Notepad
File Edit Format View Help
# Records=0000033
Id,First Name,Last Name,Gender
1,Fred,Flintstone,M
2,Andrew,Guidroz,M
4,Gavin,Holiday,M
5,Dick,Tailor,M
6,David,Bayliss,M
7,Claudia,Steinburger,F
8,Icke,Smallhammer,F
9,Spot,weasel,M
10,Harry,Drips,M
11,Robert,Baritone,M
12,Roy,Kestrel,M
13,Dick,Blokewoman,M
15,Boss,Christmas,M
16,Randy,Paperclip,M
17,Pip,Bell,F
18,Aunt,Kestrel,F
19,Rolly,Pushdad,M
21,Mandy,Lock,F
22,Bridget,Mellman,F
23,Agatha,Messiaty,F
24,Crumpled,Stiltskin,M
25,Martini,Nastyhangover,F
26,Gabbriala,slightlyteeny,F
27,Mercedes,Spenter,F
28,Angus,McCoatup,M
29,winnie,Pooh,M
30,Heather,Bintley,F
31,Sarah,McEnzia,F
32,Jillian,Tinkler,F
33,Jack,Spratt,M
34,Frederick,Great,M
35>Hello,There,f
36,,,
```

### 3.2.3.2 Export to HTML

Xplore Menu (runtime) - Output Menu

Export to HTML takes the entire data set and exports it to a HTML file. By default the filename is XPort.HTM in the application folder. However it can be changed by changing the value of the HtmlFileName property of the Xplore Class.

As of the November 2, 2015 build the html file uses a .css style sheet file that has the same name/path as the html file but adds .css to the file. So you have Xport.htm and Xport.htm.css by default. The exported html and style sheet attempt to duplicate the layout of the list-box:

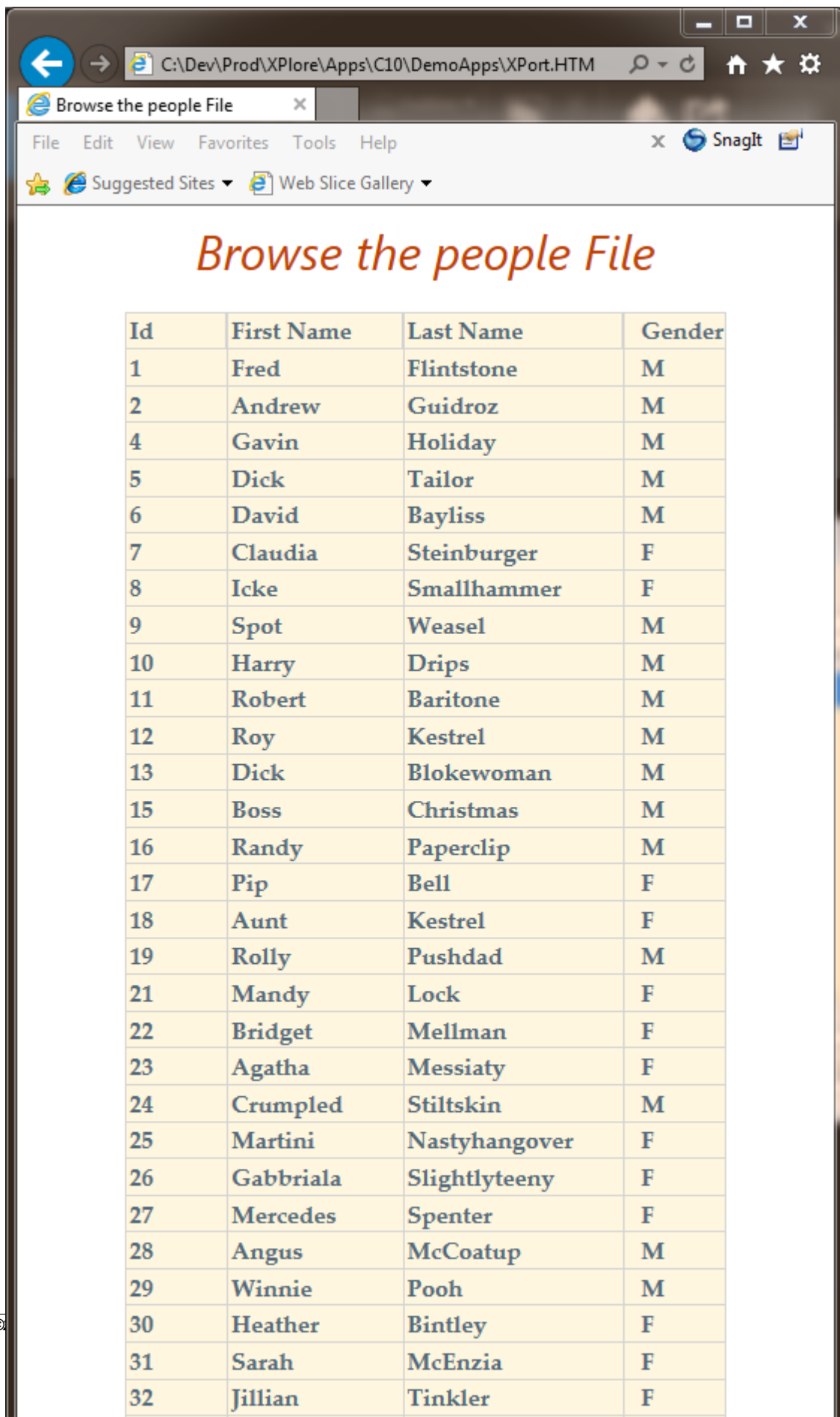


The screenshot shows a window titled "Browse the people File" with a close button in the top right corner. Below the title bar are two tabs: "By ID" (selected) and "By Name". The main content is a table with four columns: "Id", "First Name", "Last Name", and "Gender". The first row is highlighted in blue. Below the table is a horizontal scrollbar and a row of five buttons: "Print", "Insert", "Change", "Delete", and "Close".

Id	First Name	Last Name	Gender
13	Dick	Blokewoman	M
15	Boss	Christmas	M
16	Randy	Paperclip	M
17	Pip	Bell	F
18	Aunt	Kestrel	F
19	Rolly	Pushdad	M
21	Mandy	Lock	F
22	Bridget	Mellman	F
23	Agatha	Messiaty	F
24	Crumpled	Stiltskin	M

The exported html file looks like this in Internet Explorer 11:



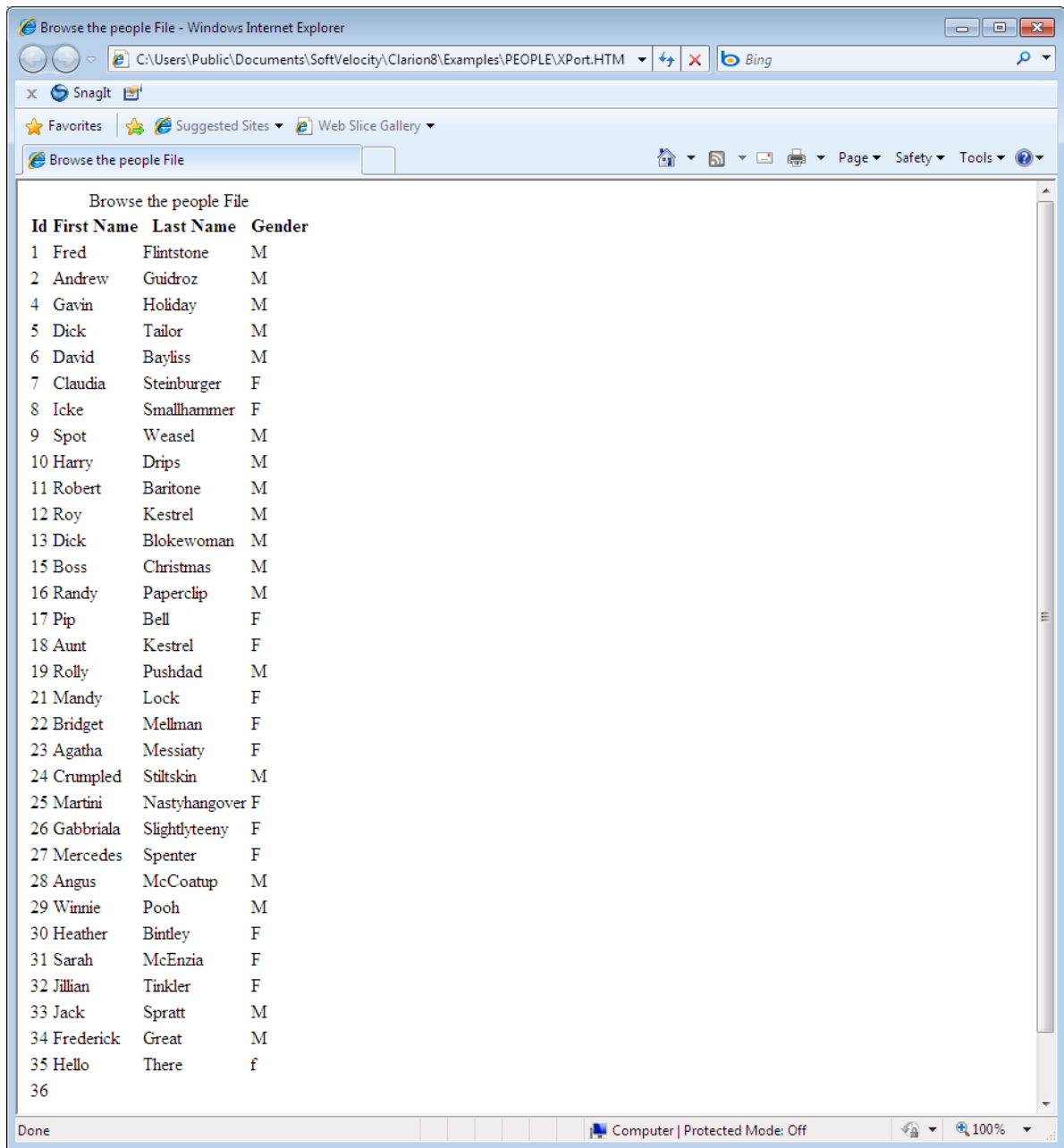


The screenshot shows a web browser window with the address bar displaying 'C:\Dev\Prod\XPlore\Apps\C10\DemoApps\XPort.HTM'. The browser has a single tab titled 'Browse the people File'. The page content features a title 'Browse the people File' in a large, orange, italicized font. Below the title is a table with four columns: 'Id', 'First Name', 'Last Name', and 'Gender'. The table contains 32 rows of data, each representing a person's record.

Id	First Name	Last Name	Gender
1	Fred	Flintstone	M
2	Andrew	Guidroz	M
4	Gavin	Holiday	M
5	Dick	Tailor	M
6	David	Bayliss	M
7	Claudia	Steinburger	F
8	Icke	Smallhammer	F
9	Spot	Weasel	M
10	Harry	Drips	M
11	Robert	Baritone	M
12	Roy	Kestrel	M
13	Dick	Blokewoman	M
15	Boss	Christmas	M
16	Randy	Paperclip	M
17	Pip	Bell	F
18	Aunt	Kestrel	F
19	Rolly	Pushdad	M
21	Mandy	Lock	F
22	Bridget	Mellman	F
23	Agatha	Messiaty	F
24	Crumpled	Stiltskin	M
25	Martini	Nastyhangover	F
26	Gabbriala	Slightlyteeny	F
27	Mercedes	Spenter	F
28	Angus	McCoatup	M
29	Winnie	Pooh	M
30	Heather	Bintley	F
31	Sarah	McEnzia	F
32	Jillian	Tinkler	F

The window caption is used for a caption. The caption uses the window font, color and style, but uses 24pt size. The table uses the list-box font, size, style and color if they are specified. For any font setting that is not specified on the list-box, the window font setting is used. The list-box format as applied by Xplore is used where applicable.

Prior to the November 2nd, 2015 build, the exported html looked like this:



**Part**



**Chapter 4 - Misc**

## 4 Misc

### 4.1 Upgrade Issues

If you are upgrading from previous versions of Icetips Xplore you should not have any issues. If you run into any problems, please contact us and provide us with information about what Xplore version you were upgrading from, what version of Clarion you are using and what build of Icetips Xplore you are currently working with.

Note that Icetips Xplore 2.0 is compatible with Clarion 6.0 and onward. It may not be compatible or usable with Clarion versions older than Clarion 6. It is however, compatible with Clarion 7 to Clarion 10.

Icetips Xplore is ONLY available for the ABC template chain and will not be ported to Legacy.

## 4.2 License Agreement

### Icetips "Xplore" End-User License Agreement

#### Important - read carefully!

By installing this software you have agreed to be bound by the following End-User Licence Agreement.

ICETIPS ALTA LLC ("ICETIPS") IS WILLING TO LICENSE THE SOFTWARE ONLY UPON THE CONDITION THAT YOU ACCEPT ALL OF THE TERMS CONTAINED IN THIS SOFTWARE LICENSE AGREEMENT. PLEASE READ THE TERMS CAREFULLY. BY CLICKING ON "YES, ACCEPT" OR BY INSTALLING THE SOFTWARE, YOU WILL INDICATE YOUR AGREEMENT WITH THEM. IF YOU ARE ENTERING INTO THIS AGREEMENT ON BEHALF OF A COMPANY OR OTHER LEGAL ENTITY, YOUR ACCEPTANCE REPRESENTS THAT YOU HAVE THE AUTHORITY TO BIND SUCH ENTITY TO THESE TERMS, IN WHICH CASE "YOU" OR "YOUR" SHALL REFER TO YOUR ENTITY. IF YOU DO NOT AGREE WITH THESE TERMS, OR IF YOU DO NOT HAVE THE AUTHORITY TO BIND YOUR ENTITY, THEN ICETIPS IS UNWILLING TO LICENSE THE SOFTWARE, AND YOU SHOULD SELECT THE "NO, DECLINE" BUTTON AND THE DOWNLOAD OR INSTALL WILL NOT CONTINUE.

#### SOFTWARE LICENSE AGREEMENT

**1. Parties.** The parties to this Agreement are you, the licensee ("You") and Icetips. If You are not acting on behalf of Yourself as an individual, then "You" means Your company or organization.

**2. The Software.** The Software licensed under this Agreement consists of computer programs only in compiled, object code form, data compilation(s), and documentation referred to as Icetips subscription product (the "Software").

**3. Subscription Term For Registered User Version.** The term of the license granted herein for the registered version of the Software shall be on a subscription basis with an initial term of one (1) year, and optional recurring renewal terms of one (1) year each, unless prior to renewal this license is terminated by written notice by You for convenience or terminated by either party for material breach. Renewal procedures are described in the accompanying documentation, and unless such procedures are strictly satisfied, including the payment of any required license fee, Your updates to the Software is not authorized, but use of Your existing Software is authorized. No updates or upgrades to the Software can be authorized unless the license fee is paid.

**4. Registered Version License Grant for Single Copies (Non-Network Use).** If You are a registered user of the Software, You are granted non-exclusive rights to install and use the Software by a single person who uses the Software only on one or more computers or workstations. You may copy the

Software for archival purposes, provided that any copy must contain the original Software's proprietary notices in unaltered form.

**5. Registered Version License Grant For Network Use.** If You are a registered user of the Software, You are granted non-exclusive rights to install and use the Software and/or transmit the Software over an internal computer network, provided You acquire and dedicate a licensed copy of the Software for each user who may access the Software concurrently with any other user. You may copy the Software for archival purposes, provided that any copy must contain the original Software's proprietary notices in unaltered form.

**6. Restrictions.** You may not: (i) permit others to use the Software, except as expressly provided above for authorized network use; (ii) modify or translate the Software; (iii) reverse engineer, decompile, or disassemble the Software, except to the extent this restriction is expressly prohibited by applicable law; (iv) create derivative works based on the Software; (v) merge the Software with another product; (vi) copy the Software, except as expressly provided above; or (vii) remove or obscure any proprietary rights notices or labels on the Software.

**7. Purchase of Additional Licenses.** Registered users of the Software may purchase license rights for additional authorized use of the Software in accordance with Icetips's then-current volume pricing schedule. Such additional licenses shall be governed by the terms and conditions hereof. You agree that, absent Icetips's express written acceptance thereof, the terms and conditions contained in any purchase order or other document issued by You to Icetips for the purchase of additional licenses, shall not be binding on Icetips to the extent that such terms and conditions are additional to or inconsistent with those contained in this Agreement.

**8. Transfers.** You may make a one-time permanent transfer of all of your license rights to the Software to another party, provided that all of the following conditions are satisfied: (a) you notify us in writing of your intent to transfer your license rights and identify the party receiving the Software with complete contact information; (b) the transfer must include all of the Software, including all its component parts, original media, printed materials and this License Agreement; (c) you do not retain any copies of any version of the Software, full or partial, including copies stored on a computer or other storage device; and (d) the party receiving the Software reads and agrees to accept the terms and conditions of this License Agreement. Notwithstanding the foregoing, we reserve the right to require the transfer of possession of all physical copies of the Software to us for purposes of re-issue of replacement copies to the party receiving the Software.

**9. Ownership.** Icetips and its suppliers own the Software, all physical copies thereof, and all intellectual property rights embodied therein, including copyrights and valuable trade secrets embodied in the Software's design and coding methodology. The Software is protected by United States copyright laws and international treaty provisions. This Agreement provides You only a limited use license, and no ownership of any intellectual property. We reserve the right to require

you to transfer possession of all physical copies of the Software to us for purposes of re-issue of replacement copies.

**10. Warranty Disclaimer; Limitation of Liability.** ICETIPS PROVIDES THE SOFTWARE "AS-IS" AND PROVIDED WITH ALL FAULTS. NEITHER ICETIPS NOR ANY OF ITS SUPPLIERS OR RESELLERS MAKES ANY WARRANTY OF ANY KIND, EXPRESS OR IMPLIED. ICETIPS AND ITS SUPPLIERS SPECIFICALLY DISCLAIM THE IMPLIED WARRANTIES OF TITLE, NON-INFRINGEMENT, MERCHANTABILITY, FITNESS FOR A PARTICULAR PURPOSE, SYSTEM INTEGRATION, AND DATA ACCURACY. THERE IS NO WARRANTY OR GUARANTEE THAT THE OPERATION OF THE SOFTWARE WILL BE UNINTERRUPTED, ERROR-FREE, OR VIRUS-FREE, OR THAT THE SOFTWARE WILL MEET ANY PARTICULAR CRITERIA OF PERFORMANCE, QUALITY, ACCURACY, PURPOSE, OR NEED. YOU ASSUME THE ENTIRE RISK OF SELECTION, INSTALLATION, AND USE OF THE SOFTWARE. THIS DISCLAIMER OF WARRANTY CONSTITUTES AN ESSENTIAL PART OF THIS AGREEMENT. NO USE OF THE SOFTWARE IS AUTHORIZED HEREUNDER EXCEPT UNDER THIS DISCLAIMER.

**11. Local Law.** If implied warranties may not be disclaimed under applicable law, then ANY IMPLIED WARRANTIES ARE LIMITED IN DURATION TO THE PERIOD REQUIRED BY APPLICABLE LAW. Some jurisdictions do not allow limitations on how long an implied warranty may last, so the above limitations may not apply to You. This warranty gives you specific rights, and You may have other rights which vary from jurisdiction to jurisdiction.

**12. Limitation of Liability.** INDEPENDENT OF THE FORGOING PROVISIONS, IN NO EVENT AND UNDER NO LEGAL THEORY, INCLUDING WITHOUT LIMITATION, TORT, CONTRACT, OR STRICT PRODUCTS LIABILITY, SHALL ICETIPS OR ANY OF ITS SUPPLIERS BE LIABLE TO YOU OR ANY OTHER PERSON FOR ANY INDIRECT, SPECIAL, INCIDENTAL, OR CONSEQUENTIAL DAMAGES OF ANY KIND, INCLUDING WITHOUT LIMITATION, DAMAGES FOR LOSS OF GOODWILL, WORK STOPPAGE, COMPUTER MALFUNCTION, OR ANY OTHER KIND OF COMMERCIAL DAMAGE, EVEN IF ICETIPS HAS BEEN ADVISED OF THE POSSIBILITY OF SUCH DAMAGES. THIS LIMITATION SHALL NOT APPLY TO LIABILITY FOR DEATH OR PERSONAL INJURY TO THE EXTENT PROHIBITED BY APPLICABLE LAW. IN NO EVENT SHALL ICETIPS'S LIABILITY FOR DAMAGES FOR ANY CAUSE WHATSOEVER, AND REGARDLESS OF THE FORM OF ACTION, EXCEED IN THE AGGREGATE THE AMOUNT OF THE PURCHASE PRICE PAID FOR THE SOFTWARE LICENSE.

**13. Export Controls.** You agree to comply with all export laws and restrictions and regulations of the United States or foreign agencies or authorities, and not to export or re-export the Software or any direct product thereof in violation of any such restrictions, laws or regulations, or without all necessary approvals. As applicable, each party shall obtain and bear all expenses relating to any necessary licenses and/or exemptions with respect to its own export of the Software from the U.S. Neither the Software nor the underlying information or technology may be electronically transmitted or otherwise exported or re-exported (i) into Cuba, Iran, Iraq, Libya, North Korea, Sudan,

Syria or any other country subject to U.S. trade sanctions covering the Software, to individuals or entities controlled by such countries, or to nationals or residents of such countries other than nationals who are lawfully admitted permanent residents of countries not subject to such sanctions; or (ii) to anyone on the U.S. Treasury Department's list of Specially Designated Nationals and Blocked Persons or the U.S. Commerce Department's Table of Denial Orders. By downloading or using the Software, Licensee agrees to the foregoing and represents and warrants that it complies with these conditions.

**14. U.S. Government End-Users.** The Software is a "commercial item," as that term is defined in 48 C.F.R. 2.101 (Oct. 1995), consisting of "commercial computer software" and "commercial computer software documentation," as such terms are used in 48 C.F.R. 12.212 (Sept. 1995). Consistent with 48 C.F.R. 12.212 and 48 C.F.R. 227.7202-1 through 227.7202-4 (June 1995), all U.S. Government End Users acquire the Software with only those rights as are granted to all other end users pursuant to the terms and conditions herein. Unpublished rights are reserved under the copyright laws of the United States.

**15. Licensee Outside The U.S.** If You are located outside the U.S., then the following provisions shall apply: (i) Les parties aux presentes confirment leur volonte que cette convention de meme que tous les documents y compris tout avis qui s'y rattache, soient rediges en langue anglaise (translation: "The parties confirm that this Agreement and all related documentation is and will be in the English language."); and (ii) You are responsible for complying with any local laws in your jurisdiction which might impact your right to import, export or use the Software, and You represent that You have complied with any regulations or registration procedures required by applicable law to make this license enforceable.

**16. Severability.** If any provision of this Agreement is declared invalid or unenforceable, such provision shall be deemed modified to the extent necessary and possible to render it valid and enforceable. In any event, the unenforceability or invalidity of any provision shall not affect any other provision of this Agreement, and this Agreement shall continue in full force and effect, and be construed and enforced, as if such provision had not been included, or had been modified as above provided, as the case may be.

**17. Arbitration.** Except for actions to protect intellectual property rights and to enforce an arbitrator's decision hereunder, all disputes, controversies, or claims arising out of or relating to this Agreement or a breach thereof shall be submitted to and finally resolved by arbitration under the rules of the American Arbitration Association ("AAA") then in effect. There shall be one arbitrator, and such arbitrator shall be chosen by mutual agreement of the parties in accordance with AAA rules. The arbitration shall take place in Port Angeles, Washington, USA, and may be conducted by telephone or online. The arbitrator shall apply the laws of the State of Washington, USA to all issues in dispute. The controversy or claim shall be arbitrated on an individual basis, and shall not be



consolidated in any arbitration with any claim or controversy of any other party. The findings of the arbitrator shall be final and binding on the parties, and may be entered in any court of competent jurisdiction for enforcement. Enforcements of any award or judgment shall be governed by the United Nations Convention on the Recognition and Enforcement of Foreign Arbitral Awards. Should either party file an action contrary to this provision, the other party may recover attorney's fees and costs up to \$1000.00.

**18. Jurisdiction And Venue.** The courts of Clallam County in the State of Washington, USA and the nearest U.S. District Court shall be the exclusive jurisdiction and venue for all legal proceedings that are not arbitrated under this Agreement.

**19. Force Majeure.** Neither party shall be liable for damages for any delay or failure of delivery arising out of causes beyond their reasonable control and without their fault or negligence, including, but not limited to, Acts of God, acts of civil or military authority, fires, riots, wars, embargoes, Internet disruptions, hacker attacks, or communications failures. Notwithstanding anything to the contrary contained herein, if either party is unable to perform hereunder for a period of thirty (30) consecutive days, then the other party may terminate this Agreement immediately without liability by ten (10) days written notice to the other.

**20. Miscellaneous.** This Agreement constitutes the entire understanding of the parties with respect to the subject matter of this Agreement and merges all prior communications, representations, and agreements. This Agreement may be modified only by a written agreement signed by the parties. If any provision of this Agreement is held to be unenforceable for any reason, such provision shall be reformed only to the extent necessary to make it enforceable. This Agreement shall be construed under the laws of the State of Washington, USA, excluding rules regarding conflicts of law. The application the United Nations Convention of Contracts for the International Sale of Goods is expressly excluded. The parties agree that the Uniform Computer Transactions Act or any version thereof, adopted by any state, in any form ("UCITA"), shall not apply to this Agreement, and to the extent that UCITA may be applicable, the parties agree to opt out of the applicability of UCITA pursuant to the opt-out provision(s) contained therein.

**Icetips Alta LLC**  
**3430 East Highway 101, Ste. #28**  
**Port Angeles WA 98362**  
**EEmail: support@icetips.com**  
**<http://www.icetips.com>**

## 4.3 Version History

This chapter lists releases with changes to classes, templates and documentation.

Version 2018.10.332 - Sunday, October 14, 2018

Version 2.0.325 - February 24, 2015

Version 2.0.321 - January 29, 2014

Version 2.0.320 - September 13, 2011

Version 2.0.318 - September 13, 2011

Version 2.0.306 - May 4, 2011

### Version 2018.10.332 [October 14, 2018]

#### **November 2, 2015:**

- Classes                      Export to HTML. Exported HTML now inherits following from the browse:
  - Column widths
  - Header text alignment
  - Header offset
  - Column data alignment
  - Column offset
  - Window font
  - Listbox font (if set)
  - Font color
  - Font size
  - Listbox background color
  - Listbox width
  
- Classes                      Use the HtmlFileName property to change the name/location of the generated .htm file.
  
- Classes                      Export to HTML now uses a CSS style sheet file. It uses the HtmlFileName property and adds ".css" to the end. The resulting .css file is included in the generated .htm file.
  
- Templates                    If Icetips Previewer was to be used there had to be a report with the Previewer extension on it. Fixed.

### Version 2.0325 [February 24, 2015]

#### **February 24, 2015:**

- Installer                    Installer is now compatible with Clarion 10

### Version 2.0.321 [January 29, 2014]

#### **January 29, 2014:**

- Installer                    Installer is now compatible with Clarion 9.1

---

**Version 2.0.320 [August 3, 2013]**

---

---

**April 29, 2013:**

---

- Classes When the export option is used and no file is associated with the .csv file extension the class throws a message that is unclear what is going on. Same with the .html file but there is less chance of that file type not being associated.

---

**February 1, 2013:**

---

- Template "Xplore: Parent for Hand-Coded ListBox" did not display contents on "Hot Fields", "Colors" and "Icons" tabs correctly. Fixed.

---

**January 24, 2013:**

---

- Classes Work on ExportHTML method to add style sheet to use with the exported HTML page. Not finished.

---

**Version 2.0.318 [September 13, 2011]**

---

---

**September 11, 2011:**

---

- Documentation Documentation done for initial release.

---

**September 10, 2011:**

---

- Templates Cleaned up "End User Options" tab in both Global and Browse extensions.

---

**September 9, 2011:**

---

- Classes Descending sort order was not working properly. Fixed.
- Templates Header cleaned up.
- Templates Support Tab added.

---

**May 9, 2011:**

---

- Classes Several global/static variables changed into class properties to prevent

possible threading issues.

- Classes Subclassing caused a crash in Clarion 8.0.8274. Also tested with Clarion 8.0.8312. Tested in Clarion 6.3 and 7.3 for backward compatibility. Seems to be fixed.
- Templates Two #GROUP calls moved from an embed point to #ATSTART as they would not #DECLARE data early enough in Clarion 8 (worked in Clarion 7.3 and 6.3)
- Classes Various OMIT/COMPILE support section for Clarion 4, 5, and 5.5 removed. As of version 2.0.306, Xplore is only compatible with Clarion 6, 7 and 8.
- Classes Support for 16 bit compiles removed.

## Version 2.0.306 [May 4, 2011]

---

### **May 4, 2011:**

---

- **Installer** Product revived after couple of years of non activity. Help still under construction.

### **Version information from before version 2.0:**

---

### **June-09-2005:**

---

1. Templates Modified call to Init method to pass the INIMgr.FileName instead of the %IniFileName as the name for the INI filename. Needs testing.

---

### **September-21-2004:**

---

1. Templates Added check for %ControlFieldHasTip so that it is not checked if it doesn't exist. Code in testing.

----- VERSION 1.204, August 16, 2004 -----

---

### **August-9-2004:**

---

1. Classes Implemented GetFocus() API instead of the Focus() function to work around a bug in Clarion 6.1 which breaks the Focus() function.

---

### **June-21-2004:**

---

1. Classes Found limitation in GetIni and PutIni which are used to store the browse format. Very big browses can reach the limit of 1023 characters that GetIni and PutIni can handle. Added XPGetIni and XPPutIni which use GetPrivateProfileString and WritePrivateProfileString api calls

to read and update the ini file. Currently in testing.

---

**June-16-2004:**

---

1. Template    Template would generate the wrong ini filename if a variable was being used, i.e. if !Glo:IniFileName was used as the INI filename it would not use the variable, rather use "IniFileName." as the filename. Reported with a fix by Ole Torgersen. Fixed.

---

**June-10-2004:**

---

1. Classes    Implemented new property and methods of the XploreQueryClass and XploreRootClass so the query indicator can be changed. This indicator was being hardcoded to \* (asterisk). This would cause problems if there was a column that included \* as in tagging columns etc. New methods implemented are SetQIndicator(String) and GetQIndicator(),String, which set and get the indicator character. The character can only be one character - defined as CString(2) and is protected.

---

**June-02-2004:**

---

1. Classes    Added the ONCE attribute to INCLUDE('PrnProp.CLW') in Xplorert.inc and Xplore.tpw for compatibility with Capesoft's Send-To.

---

**February-27-2004:**

---

1. Classes    Fix in the .Init method. It was setting default values for preview settings causing problems since the templates set the preview settings before the call to the .Init method. This caused the outputs not to be previewed. Fixed.

---

**February-04-2004, Version 1.202:**

---

1. Classes    New Method, GetCurrentFilter(). Retrieves the currently used filter so it could be used in reports or whatever else. Returns a string with the filter. Optional parameter indicates if the parenthesis around the filter should be removed. Default value is False.
2. Template    Locator for Filtered fixed so that it uses an entry field.

---

**January-27-2004**

---

1. Classes:    User filters were not working at all. Debugged this and found the problem and have fixed it. Tested in both C5.5H and C6Gold.
2. Classes:    Regression: Field names in the Properties window were not being sorted alphabetically. Fixed.
3. Classes:    Added a property to determine if the browse format should be stored/restored

4. Template: Added prompts to take advantage of 3.

---

**January-01-2004**

---

1. Xplore.clw Made changes to make the filtering work with the user filter option.

---

**Version 1.006**

---

1. Classes: Properties window would show fields in default order instead of alphabetical order. Fixed.
2. TRN file: Made some cosmetic changes to the Properties window.

---

**Version 1.005**

---

1. Classes: Created a cut down copy of the ABC Query Class to use.
2. Templates: Modified template to generate filter code for C6.

---

**Version 1.001**

---

1. Bug fix: Filters were not working. Removed the symbol and the filters work. Need to go through this code to figure out exactly WHY they didn't work. They were correct according to ABC docs. (Line 227 XPLORE.CLW)

---

**Version 1.000, released March 2003**

---

1. New Feature: Icetips Previewer implemented as an optional previewer.
2. New Feature: Optionally set preview for all page/one page printing or use variable. Optionally update the variable when the popup shows up.
3. Update: Updated all screens in template to show Icetips Software
4. Clarion 6: Checked for compatibility with Clarion 6. Does not seem to have any problems.
5. New Feature: Added properties to the XploreRoot class to eliminate the popup menu from the header as well as eliminate all popup items added by Xplore. Added options in the template also to set these properties.

---

**Versions from before Icetips took Xplore over on March 3, 2003.**

---

2001/06/19 043 Xplore.CSS validated by: <http://jigsaw.w3.org/css-validator/validator> Xport.htm  
validated by: <http://validator.w3.org/> for xhtml1.0 modified XploreMask suffix to solve a problem  
when 11 browses on one window had Xplore applied <bg>

2001/05/30 042 Adjusted ManagerName code for C5 and C55

- 2001/04/24 New embed point to allow developer to set a filter for all sort order via hand code  
Increased size of stored Format Strings to 2048
- 2001/04/15 QueueField symbol now has new value in it for C55 gold (possible GPF) culminating in a display of all rows being the same after an update - now fixed  
Improved look of HTML output including column justification and column headers plus optional ability to integrate a Cascading Style Sheet called XPLORE.CSS (sample included)  
New Template dialog to hide sub-menus and/or a few other right-click items
- 2001/02/22 Reports (Print View) now prints totals correctly.  
Fixed occasional GPFs when hiding columns  
Fixed problem with some menuitems not showing  
Fixed Colors dialog popping on any field event  
Fixed problem in Graph to allow changing of font  
Added new embed points to .MyPreViewer to allow TinTools Preveiwier via child extension template (courtesy of Jim Gambon)  
Sub-Menu text items can now have hot keys and can contain spaces and/or special characters.
- 2000/04/02 041 New property IncludeHeader (default=false) which decides whether or not to include the header text in adjusting column widths to that of the widest field
- 2000/03/03 040 Move XploreN.Init after Open(Window) and applied code to maintain TRN on column ICON even after shifting columns  
Added new Property (LHCol4Moving default=1) which designates a left hand column where shifting can start.  
Xplore now remembers descending correctly from session to session.
- 1999/12/30 039 Fixed a Filter bug where 'less than' on numeric fields were not working correctly
- 1999/12/01 038 Added capability to inherit a single Locator for all Sort orders IF 'Override Default Locator Control' is specified in the BrowseBox template.
- 1999/08/08 037 Added a Portuguese (Brazilian) TRN file - courtesy of Nelson de Carvalho  
1999/08/08 037 Added the ability to show a Total field on a graph bar  
1999/08/08 037 added a new User Filter feature where the user can type in the 'search value'
- 1999/08/07 036 Added a Norwegian TRN file - courtesy of Trond Eirik Paulsen  
1999/08/07 036 Fixed the right-click Sub-Menu positioning when non-English TRN files were used  
1999/08/04 036 Added a Spanish TRN file - courtesy of Rafael Lopez  
1999/08/03 036 Fixed a problem with EIP so that Xplore now executes any derived EditClass column specific code
- 1999/07/20 036 Added a Dutch TRN file - courtesy of Wolter Nijmeijer.  
Moved submenu text from code to TRN files for easy translation.  
Increased size of text fields for color names in non-english languages
- 1999/06/10 035 User cannot now move columns if option is turned off.  
Added a 'NOT =' filter option  
'UPPER' for Orders/Filters can now be specified on a procedure basis.  
Fixed filter problem where it could use the wrong picture after columns have moved.  
Fixed 'grayed-out' filter if field is the non-primary file.  
Applied 'UPPER' on filter based upon Xplore Global Template setting.  
Added option to add '=' to the < or > filter.  
Fixed problem with DCT field description of something like: Ship'd
- 1999/05/19 034 Added a '<' and '>' filter facility.
- 1999/04/15 033 Added a Filter facility to apply a filter on a right-clicked cell value along with a 'Void

the current filter'. This functionality is only available if compiled in C5 - as it uses the QueryClass.



## 4.4 Limitations

Here we will reveal any limitations that we find or are notified about.

---

### ***Capesoft's Keeping Tabs - March 24, 2012***

---

We have learned that Capesoft's Keeping Tabs interferes with Xplore by saving/restoring the listbox format and overriding Xplore or Xplore overriding Keeping Tabs. Keeping Tabs has an option to save Listbox format (see documentation at <http://www.capesoft.com/docs/KeepingTabs/KeepingTabs.htm>) so you can turn that feature off if you want to let Xplore do it, or you can leave it on in Keeping Tabs and turn it off in Xplore.

## 4.5 Contact us

### Upgrades

The latest upgrades can be downloaded from [www.icetips.com](http://www.icetips.com). Note that you must have a valid Silver or Gold Subscription to be able to download the install.

### Bug reports and suggestions

If you want to contact us, please send us emails to [support@icetips.com](mailto:support@icetips.com)

If your app is a multi-dll app, please try to recompile all your apps before reporting possible problems.

When reporting bugs, please let us know your version of Clarion and Icetips Xplore, and if possible, provide a screen shot. An example app or steps to reproduce in the demo app are highly appreciated.

### Other Clarion Products

You'll find more of our Clarion products at [www.icetips.com](http://www.icetips.com)

You have multiple ways to contact us for support. Easiest is email to [support@icetips.com](mailto:support@icetips.com). We usually respond within minutes if it is during our business hours and we are available. You can also post on our forums and we will be notified by email of new topics. By pressing the "Icetips Support" link on the "Support" tab in the templates you will get a list of all the options that you have to contact us for support.

**Part**



**Chapter 5 - Old Documentation**

## 5 Old Documentation

When Icetips took Xplore over from Brian Staff back in 2003 he was kind enough to provide us with a short document with information about Xplore. It was distributed for years with the product but never made it into a decent documentation until now. The documentation in version 2 is still under construction but that old document from Brian gave me some good tips about certain features that I, quite honestly, had never discovered before and was not sure what did! In case others find some interesting tips and tidbits in the old documentation I decided to include it here at the end of our more "official" documentation. Enjoy:)

## 5.1 Implementing Xplore

### Xplore for C4/C5!

Created: Thursday, January 15, 1998  
Last updated: Monday February 15th 1999

**Philosophy.** Xplore is intended to enhance the functionality of the standard Clarion BrowseBox of the **ABC** templates. This is accomplished by populating an extension template that automatically creates and uses the Xplore Class. Requirements, implementation, features, and functions of Xplore are provided below.

**Files Required.** Files identified below must be placed in the directory indicated.

#### Directory ...\\LIBSRC

- XploreRt.INC - Root Class Header File
- XploreRt.CLW - Root Class Methods and Properties
- Xplore.INC - Xplore Class Header File
- Xplore.CLW - Xplore Class Methods and Properties
- Xplore.TRN - Translation Link File
- XploreEn.TRN - English Translation File
- XploreDe.TRN - German (Deutsch) Trans File (Courtesy of Peter Hiemenz)

#### Directory ...\\TEMPLATE

- Xplore.TPL - template header file
- Xplore.TPW - template wrapper for Xplore

#### Directory ...\\IMAGES

- MoveUp.ICO
- MoveDown.ICO
- XpCheck.ICO

#### \*You must first register the templates in Clarion by going to:

- Menu
- Setup
  - Template Registry
  - Click on the REGISTER Button
  - Find the TEMPLATE directory
  - Select/Open: **Xplore.TPL**

#### The Xplore template set contains the following templates:

XploreOOPGlobal	Extension Global Extension
XploreOOPBrowse	Extension Xplore: Child for Clarion BrowseBox
XploreOOPList	Extension Xplore: Parent for Hand-Coded ListBox
XploreOOPListChild	Extension Xplore: Child for Hand-coded Listbox
XploreOOPFileDropChild	Extension Xplore: Child for File Drop List

To use Xplore capability in any Application the developer must first populate the Application with the Xplore Global extension template (**required**):

- Click on the GLOBAL button
- Click on the EXTENSIONS button
- Click on the INSERT button
- Select **XploreOOPGlobal** template
- (You may leave the options set to default at this time.)

Default settings for use of Xplore within the Application are set on the XploreOOPGlobal template. It is also where the developer decides which Report Pre-viewer to use. The default setting is to use the standard Clarion Pre-viewer. The developer may choose to use either the Pre-viewer from CPCS (Creative PC Solutions) or the RPM pre-viewer(Lodestar Software). *You must possess valid licenses for either product.*

#### **Adding Xplore To A Browsebox:**

To apply Xplore features, the developer simply adds [XploreOOPBrowse](#) as a child extension template to the normal Browse Control Template. This is completed by selecting any procedure that has a Browse-Box populated in it, and:

- Click on the PROPERTIES button
- Click on the EXTENSIONS button
- Select the highlight bar on the 'Browse on File' template
- Click on the INSERT button
- Select the [XploreOOPBrowse](#) template

*\*Note: Any time you wish to change the browse back to its original standard, you simply delete the Xplore extension template.*

#### **Adding Xplore To A Filedrop (View/File Loaded LIST):**

The developer may apply Xplore features to a FileDrop control by adding [XploreOOPFileDropChild](#) as a child extension template to the normal FileDrop Control Template. (You should make sure that **DROP=0** on the LIST control, then it will act just like a normal View/File loaded LIST box.) Adding Xplore to a FileDrop is completed by selecting any procedure that has a FileDrop populated in it, and:

- Click on the PROPERTIES button
- Click on the EXTENSIONS button
- Select the highlight bar on the 'File Loaded Drop Box' template
- Click on the INSERT button
- Select the [XploreOOPFileDropChild](#) template

*\*Note: Any time you wish to change the FileDrop back to its original standard, you simply delete the extension template.*

#### **Adding Xplore To A Hand-Coded LIST Control:**

Xplore functionality can be also be applied to hand-coded list control by adding the [XploreOOPList](#) extension template and completing options in the dialog presented. The [XploreOOPListChild](#) extension template **must** also be added as a child to the [XploreOOPList](#) parent template. NOTE: It is the developer responsibility to create the queue for this LIST control and to provide functions to add data to the queue. [Xplore](#) does create or build any data for the hand-coded LIST.

- Click on the PROPERTIES button
- Click on the EXTENSIONS button
- Click on the INSERT button
- Select the [XploreOOPList](#) template, **then**
- Put the highlight bar on the 'Parent for a Hand-coded Listbox' template
- Click on the INSERT button
- Select the [XploreOOPListChild](#) template

NOTE: Xplore will allow the end-user to display or hide any field that has been formatted in the listbox by the developer **AND** display or hide any field that has been specified as **HOT** in the Browse Control

---

Template. Local variables can also be specified here, but, it is the responsibility of the developer to prime the local variable with the computed value from the view field.

## 5.2 Xplore Options

### General TAB

- **'Click on Header to Re-Order'** (*default in ON*) is required if the developer intends to offer the end-user the ability to click on any list box column header to re-sort the data. This is a Windows-95 Explorer type functionality where the column header will appear to depress just like a real button. If switched **ON**, then the default is that each column will be sorted on the file field that it is displaying. If switched **OFF**, the end-user will not be able to re-sort by any column; **however**, they will still be able to re-format the columns of the browse box.
- **'Visual Clue for Re-Order Sequence'** defines how the developer will indicate to the end-user which column is currently ordering the data. The **'>Header'** puts an indicator in the column header to signify ascending (>) or descending (<). The **'Text Bar'** will put a text string (identified by the next dialog control) in the window title bar. **'Underline'** will underline the data in that column and **'Nothing'** will offer no indication to the end-user.
- **'Text for Sorted Order'** allows the developer to specify text to be merged with the column identifier which will get placed window title bar. The field header will get inserted between the "" markers.
- **'Default Column Locator'** allows the developer to define which locator will be the default for each column. Any particular column can be over-ridden later with options under the Columns TAB.
- **'Message(..) issued...'** specifies whether the end-user will be presented with a message box informing them that the option does not work on a particular column. If switched **OFF**, then clicking on a non-sorting column-header will just do nothing. The column header button will not appear to depress.
- **'Multiple Keys on TABs'** specifies whether there are multiple **TAB** selections on the window (as generated by the standard Clarion Wizard) with a new key for each TAB.
- **'Multiple Format Strings'** allows the developer to specify whether the end-user can maintain a different format string for each TAB. The different format strings are defined/modified/maintained at runtime.
- **'NewSelection Tab/Radio'** needs to specify the window control (**TAB** or **RADIO**) that will invoke each new format string. *All of the format strings are saved between sessions.*
- **'Seperate TABs for each Column (Wizard Sheet)'** will allow the developer to specify a different TAB (*and hence, different controls*) for each column. The new TAB will be invoked when the end-user clicks on the column header to invoke its sort order.
- **'Default TAB'** requires the developer to specify which **TAB** is the default for each column. Individual columns are then overridden using the dialog on the template Columns TAB.

### Columns TAB

- N.B. If you have column in the Browse Box displaying a local variable, AND, you're allowing the end-user to sort on that column, then you **MUST** make an entry for this column which tells the View engine which view field to use for ordering.
- **'Initial Sort Sequence'** offers the developer the ability to specify which sequence will be shown initially when the browse is initiated. If you have multiple TABs with multiple Keys, then take note



that the '**Previous Session**' can cause some initial 'flashing'.

- '**Column Field Assignments**' allows the developer to alter the defaults for each column. This need NOT be done for every column - only those that you need to alter.
- '**Column Field**' is the name of the field being displayed. In the case of a column showing a local variable, you **MUST** specify the local variable here, not the view field that is priming it.
- '**Allow Sort on this Column**' (*Defaulted to ON*) allows the developer to switch OFF the sorting capability for any individual column. NOTE: It is also possible to switch the capability on/off at runtime on an individual column basis. This may be done based on the security level of the user for instance.
- '**TAB Selection for Column**' will only be active if the developer has specified '**Seperate TABs for each Column(Wizard Sheet)**' on the pervious dialog. This allows the developer to select a different TAB for this particular column.
- '**Locator**' (*Defaulted to "Step"*) allows the developer to specify a different locator type for this column when the list box is sorted on this column. The new '**Filtered**' locator works well on string fields.
- '**Sort Field Elements**' allows the developer to define as many fields as are desired for presenting the order of the data. The developer may also specify **ascending** or **descending** sort orders. (*This is just like building a dynamic key.*) If the column is displaying a local variable and sort is allowed on this column, then the developer **MUST** specify a view field here for the view engine to sort on.
- '**Create Report Totals on this Column**' gives the developer the option of creating totals on this column at the end of the **built-in** view report. Usually this should only be specified on columns showing numeric data.
- '**Allow Graph on this Column**' specifies whether the end-user can create a bar graph of the column data. e.g. if the column is displaying 'Country', then it might be useful to create a bar graph of which countries the current filtered view has selected. It would not be logical to create a graph of a field such as an 'Address' column.
- '**Graph Details**' offers the developer some choices on how to graph some common types of data: Date; Time; Numeric; String. NOTE: An EMBED point has been provided to clone/modify the existing code if complex graphing capability is required.
  - 'Date' columns can graph on Day of the Week; Month of the Year; or by Year.
  - 'Time' columns can graph by Hour; 4 Hour segments or 6 Hour segments.
  - 'Numeric' columns allow specification of a range along with a starting value.
  - 'String' columns will graph on any simple string slice.
- '**Additional Default Sort Order Fields for Columns**' allows the developer to define any number of fields which will automatically be appended to each column sort order. This provides a quick method of making each record unique in a sort order display.
  - '**Apply Additional Sort Fields to ALL Columns**' - if checked ON then it will apply the fields to all columns. If checked OFF, then the additional sort order fields will only be applied to columns which do not have any fields specified in the 'Sort Field Elements' of the 'Column Field Assignments'.

### **End User Options TAB**

'Xplore Options' offers the developer a means to quickly set on or off ALL of the check boxes, and to

reset the switches to those specified in the Global extension template. Otherwise, each switch may be independently set as required for the procedure. The option check-boxes allow the developer to decide which options to give the end-user via the browse box right-click capability at run time.

**NOTE:** The end-user will be able to (1) shift columns right and left by dragging the column header; (2) be able to reset the browse box back to its default format setting and, (3) be able to create output of the browse via a page/view report or a graph, even with all options switched OFF.

## 5.3 Dictionary User Options

The Browse Box template will automatically load the Primary Key fields into the browse queue. Xplore will use those fields and present them to the end-user. Often these fields are not required or desired to be seen by the end user. To hide them from the end-user, just specify **NoXplore** in the User Options box of the ***Field definition*** in the DCT file.

## 5.4 English Translation

Any developer wanting to modify any English text to alternative text or non-English should first copy the XploreEn.TRN file to say XploreYY.TRN and then modify the Xplore.TRN link file accordingly. The reason you should rename your new TRN file is to avoid overwriting a modified version when new releases of Xplore are installed. At worst, the Xplore.TRN link file will get replaced which can be easily recreated.

**NOTE:** It is not only possible to modify text, but also complete window/report structures. It is also possible to override any method in the Xplore Class (Xplore.INC/CLW), which are usually those showing windows; reports or dialogs.

If you wish to alter the Xplore settings at runtime (most of them), then it is possible for you to alter the local DECIMAL variable value of XploreMaskN where N is the INSTANCE value of the Browse Box template. This mask is made up of individual bits that are identified either in the XploreEn.TRN or the Xplore.TPW files. This value should be modified at the beginning of the procedure. For instance, if you wish to turn OFF the ability to show the 'Properties' menu item in the right-click menu, you must do this before the Xploren.INIT() is executed in **ThisWindow.INIT()** method. This can be done in the **WindowManager Init embed using a PRIORITY less than 6500.**

Menu items (in the right-click menu) can also be disabled by issuing the following type of command:

Xplore1.BC.Popup.SetItemEnable('PRP',False) where the PRP is the internal Xplore/Popup name for the Properties menu item. These menu items are all listed in the **AddItemsToBrowsePopup** method in the XploreRoot Class in XploreRt.CLW

N.B. If you populate Xplore on two or more related Browse Boxes in a single procedure, you **MUST** make sure that you populate them in their relationship order - **Parent then Child**, else you will get a constant refresh flickering.

## 5.5 Added since build 25

- Xplore now supports Edit-in-Place. The edit-in-place functionality is still executed by the standard EditClass code, so, for developers who are overriding that, it should still work. Xplore merely looks after the shifting of the columns.

**NOTE:** In order for EIP to work with Xplore in C4, you **must** CHECK ON the Edit in Place dialog in the Xplore Global template and then make one small change to the Browse Class in ABBROWSE.INC

The following line at roughly 231

**Fields &FieldPairsClass,PRIVATE**

*should be changed to*

**Fields &FieldPairsClass,PROTECTED**

This is your choice! I would rather not have to make any changes to the base class, but it was the only way to accomplish EIP. Incidentally, this change to the base class is **not required in C5.**

- Xplore will now output an ASCII comma separated value file (default = Xport.CSV) and it will optionally launch the application (like Excel) associated with the file type.
- Xplore will now output an HTML file (default = Xport.HTM) and it will optionally launch the application (like MSIE or Netscape) associated with the file type.
- Xplore now gives you the option of setting the UPPER function (or not) on the sort order fields. The default is set to True (ie use UPPER) in the Xplore Global Extension template. If you need to alter the Xplore Property (UPPER) then it should be changed at runtime in ThisWindow.SetAlerts with a PRIORITY >1000 and <8000.

## 5.6 Multi-DLL Requirements

The application which is considered to be the '**root**' - that which has 'Generate template globals and ABC's as EXTERNAL' switched OFF - should automatically compile and link the Xplore.CLW and XploreRt.CLW source files. There have been reports of this not happening. If you encounter this variation check your .RED file and make sure the Xplore.INC and XploreRt.INC files are in the \LIBSRC directory. This application will create a 'root' DLL and LIB files.

The developer must add the Xplore global extension and any Xplore procedure templates to any application that requires Xplore functionality. These applications (**DLL or EXE**) must have the 'Generate template globals and ABC's as EXTERNAL' switched ON. The developer must also add a module to these applications to reference the '**root**' LIB file, by going to Menu; Application; Insert Module; select **ExternalDLL** and then name the root.LIB file in the module name. NOTE: If this is not done you will get a multitude of Linker errors for Xplore.

## 5.7 Xplore Properties

Properties of Xplore can be changed at runtime using statements such as:

**Xplore1.MaxFontSize = 10**

**.MaxFontSize** - default value = 14

**.MinFontSize** - default value = 6

These two properties determine the range of font sizes to be used for the Xplore reports. Xplore will use the largest font whilst trying to fit all columns on the page.

**.PaperType** - default value = Paper:Letter

This property specifies which paper type to be used in reports.

**.AllPreview** - default value = True

This property determines whether the Report Previewer is to be used for 'Print All'.

**.PagePreview** - default value = False

This property determines whether the Report Previewer is to be used for 'Print Page'.

**.HeaderStyle** - default value = FONT:Regular

This property specifies which font is to be used for the column headers.

**.AsciiFileName** - default = Xport.CSV

This Xplore Property holds the ASCII file name for the exported CSV file

**.Separator** - default = ',' a comma

The Xplore Property holds the separator character between fields for the CSV file

**.HtmlFileName** - default = Xport.HTM

The Xplore Property holds the HTML file name for the exported HTML file

**.ShellExexcute** - default = True

The Xplore Property decides whether to launch the file type application after exporting the ASCII or HTML files.

**.FilterShared** - default = False (C5 only)

This property when set to False causes only the current sort order to be applied with the cell right-click filter option. If set to True, then ALL sort orders will be applied the new filter.

**.Graph** - default = True

This property specifies whether the right-clcik menu option for Graphing a column is enabled or disabled.

**.Upper** - default = True (or as set by the Global Template dialog)

This property determines whether the sort order fields use the syntax of UPPER(FIL:Field) or just FIL:Field

## 5.8 Xplore Features

- Shift Columns by dragging header left or right.
- Double-Click on column separator bar to adjust width to widest column string.
- Ability to specify multiple view sort fields for each column.
- Can co-exist with Sheet/Tabs each with its own format string, and the columns will inherit the range and filter settings of the active TAB.
- The column header click can optionally display it own TAB.
- Can hide a column by right-clicking a menu option in the popup menu.
- Hot key to reset the browse back to its default setting.
- Hot key to adjust the width of all columns to the widest column text.
- The ability to set any color on a column without the need to specify color at design time.
- Each column can have its own locator - even the new filtered locator.
- A browse right-click ability to print the current browse page using the current column settings.
- A browse right-click ability to print (with preview) the current browse VIEW using the current filter; in the current order with the current column settings.
- A browse right-click ability to export to a CSV file, the current browse VIEW using the current filter; in the current order with the current column settings.
- A browse right-click ability to export to a HTML file, the current browse VIEW using the current filter; in the current order with the current column settings.
- A browse right-click feature to show a graph of the selections of the current column. i.e. graph a date column by Day of the Week or Month of the Year.
- Edit-In-Place - even when the columns have been shifted.
- Right click option for applying a filter to the view using the value in that cell - C5 feature only

Other Browse Right-click options include the ability to modify:

- Column Header Text
- Header Justification
- Header Offset
- Data Justification
- Data Offset
- Toggle Column Resize Bar
- Toggle Column Separator
- Change Browse Font
- Change Xpos/Ypos/Width/Height of Browse Box
- Change Lineheight of Browse box
- Add/delete column fields specified via the Clarion BrowseBox Hot Fields dialog

**\*No Black-Box; No DLLs; No LIBs - all of this with just normal Clarion source code and template code. All Xplore functionality can easily be turned off by just de-populating the Extension template and you're back to the basic browse that Clarion offers.**



## 5.9 Tips & Tricks

- Suggestion: to find out exactly what is going on with filters/orders - place two STRING controls on your window called 'Filter' & 'Order' and then in the ThisWindow.TakeEvent Embed (PRIORITY=4000) simply code:

```
Filter = BRW1::View:Browse{PROP:Filter}
Order  = BRW1::View:Browse{PROP:Order}
```

There are number of Xplore class properties that can be set to have that little extra control:

```
Xplore1.Graph           = False           !turn off right click graphing capability
Xplore1.PrintView      = False           !turn off right click Print Page
capability
Xplore1.PrintPage     = False           !turn off right click Print ALL
capability
Xplore1.AsciiFileName = 'C:\dir\what.CSV' !specify path/filename for the output CSV
file
Xplore1.HtmlFileName  = 'C:\dir\what.HTM' !specify path/filename HTML file output
Xplore1.MaxFontSize   = 14              !maximum font size used in auto sizing
!of print report
Xplore1.MinFontSize   = 6              !minimum font size used in auto sizing
!of print report
```

etc...

- Firing an event (listed in XploreRt.INC) usually from the right click POPUP menu by code - will work, **but only if the LIST control has focus**. Because it is possible to have more than one List control (using xPlore) on a Window, a test for **focus()** is required to pop-up the appropriate "Properties Window" for the List control in focus, using

```
POST(xpEVENT:PRP)
SELECT(?List)
```

- Embed points are provided where the developer can set a specific filter for all columns depending on which 'Browse Condition' is set. These include an embed called 'Xplore: Set Column Filter' and one each for 'Conditional Behavior' inherited from the Browse template dialog.

As an example: The developer could set on say, the 'Xplore: Set Column Filter' an embed condition of **CHOICE(?CurrentTab) = 2** and conditions specify a filter such as:

```
BRW1.SetFilter('CUST:Country="Canada"')
```

- Each column in Xplore has it's **own** sort order. Typically, a filter gets applied against the current sort order only. If you wish to inherit a filter (**those specified at runtime filter from QBE**) for all Sort Orders, then just issue **BRW1.QueryShared = 1** at any embed point after the browse is initiated (e.g. BRW1.INIT). *If you do use this Browse Class property, I would strongly recommend displaying the **PROP:Filter** on your window, as outlined above.*
- The new right click menu option to set a filter will apply a filter based on the cell value to the current sort order only if FilterShared = False. However, if FiklterShared = True then th efilter is applied to ALL sort orders, which means that after a filter has been applied, the end-user can re-sort the cuurent view on any column withe filter still applied.
- If you choose to the RPM previewer, then you must apply a supplied RPM CODE template called RPM: Indirect Viewer Launch at an Xplore embed point just for that purpose. The embed point text supplies the Queue name to use and you should also specify Landscape mode.
- If you have a window that contains a pair of related Parent/Child Browse Boxes and the scrolling of the parent is causing undue delay in displaying the child, then here is what is happening:

The scroll of the parent actually applies a different filter for each new line (NewSelection). The child list box then gets re-sorted to create a new dynamic index...for each scroll.

Try implementing this:

At the **NewSelection** embed of the **Parent** LIST:

```
IF BRW2.ViewOrder = True OR BRW2.FileSeqOn = True
  BRW2.ViewOrder = False
  BRW2.FileSeqOn = False
  Xplore2.EraseVisual()
  BRW2.SequenceNbr = 0
END
```

*where '2' is the Instance number of the Child BrowseBox.*

This code tests if there is a non-key sort order on the child Browse Box and if so, sets the non-key sort(s) to OFF, erases the '>Header' indicator, sets the 'current sort column' to null....and then proceeds as normal.

**This should speed up parent scrolling considerably.**

# Index

- . -

.css 35

- ~ -

~= 30

- < -

< 30

- = -

= 30

- > -

> 30

- 2 -

2003 56

- A -

ABC browse 28  
 ABC browses 7  
 ABC template chain 40  
 Add = to Filter 30  
 Added since build 25 65  
 Additional Default Sort... 14  
 Additional Sort Fields 18  
 Adjust All Widths 29  
 Adjusts the width 29  
 All 34  
 All Pages 24  
 Allow Graph on this column 15  
 Allow Sort on this column 15  
 Allow User to "Size" List Control 25  
 Alt-F11 8

Alt-F12 8  
 Alt-R 8  
 Apply Additional Sort... 14  
 Ascending 18  
 ASCII 34, 67  
 AsciiFileName 34  
 AsciiFileName property 34

- B -

Brian Staff 56  
 Browse Attributes  
   Font 9, 20  
   Height 9, 20  
   Horizontal Scroll 9, 20  
   Line Height 9, 20  
   Vertical Scroll 9, 20  
   Width 9, 20  
   X Position 9, 20  
   Y Position 9, 20  
 Browse Columns 14  
 Browse End User Options 20  
 Browse General 12  
 Browse List Control 25  
 Browse Menus 23  
 Browse Notes 26  
 Browse on <filename> 4  
 Browse procedure 4  
 Browse Reports 24

- C -

Child for Clarion BrowseBox(ABC) 4  
 Choice() 69  
 Clarion 6.0 40  
 Clarion 7 40  
 Clarion 8 40  
 Clarion browses 29  
 Click on Header to Re-Order 12  
 Column data alignment 46  
 Column field 15  
 Column Field Assignments 14, 15  
 Column headers 67  
 Column offset 46  
 Column Options  
   Column Border 9, 20  
   Column Colors 9, 20

Column Options  
 Column Resize 9, 20  
 Fix Column 9, 20  
 Move Column Left/Right 9, 20  
 Popup All Properties 9, 20  
 Underline 9, 20  
 Column properties 14  
 Column sort order 18  
 Column widths 46  
 Columns TAB 60  
 Comma separated file 34  
 Contact us 54  
 Contains 30  
 Copyright 11, 27  
 CPCS 10  
 Create Report Totals... 15  
 CSS 46  
 CSS style sheet 46  
 CSS style sheet file 35  
 CSV 67

## - D -

Data Justification  
 Center 9, 20  
 Decimal 9, 20  
 Left 9, 20  
 Right 9, 20  
 Default 29  
 Default Column Locator  
 Filtered 12  
 Incremental 12  
 None 12  
 Step 12  
 Default filename 34  
 Default settings 29  
 Default TAB 12  
 Descending 18  
 Dictionary User Options 63  
 Directory 57  
 Display filter in title... 12

## - E -

Edit-In-Place with Xplore 8  
 EIP 8  
 Email 54

End User Options 9, 20  
 End User Options TAB 60  
 English Translation 64  
 ENTRY 12  
 Equal 30  
 Export to ASCII 34  
 Export to CSV 34  
 Export to HTML 34, 35, 46  
 EXTERNAL' 66

## - F -

Field to be Totaled 15  
 Files Required 57  
 Filter 29  
 'Filter' 69  
 Filter Menu 29, 30  
 Filtered 15  
 Focus() 69  
 Font color 46  
 Font size 46  
 FONT:Regular 67  
 Format Listbox... 29

## - G -

Generated .htm file 46  
 Global - Defaults 8  
 Global - End User Options 9  
 Global - Previewer 10  
 Global - Support 11  
 Global extension 7  
 Global extension template 7, 24  
 Global settings 4  
 Global Template 7  
 Graph 34  
 Graph Criteria...  
 Count 15  
 Total 15  
 Graph Details  
 Date 15  
 Numeric 15  
 String 15  
 Time 15  
 Greater than 30

**- H -**

Hand coded listbox 28  
 Header Justification  
   Center 9, 20  
   Decimal 9, 20  
   Left 9, 20  
   Right 9, 20  
 Header offset 46  
 Header text alignment 46  
 Hide Adjust Width Menu Item 23  
 Hide Filters Sub-Menu 23  
 Hide Graph Menu Item 23  
 Hide Hide Column Menu Item 23  
 Hide Output Sub-Menu 23  
 Hide Xplore Popup menu 23  
 Hide Xplore Sub-Menu 23  
 Hide Column 29  
 Hide Header Popup menu 23  
 Hide the selected column 29  
 Hot key 8  
 HTML 35, 46, 67  
 HTML file 34  
 HtmlFileName 35, 46  
 HtmlFileName property 34, 35

**- I -**

Icetips Previewer 10, 46  
 Icetips Report Extension  
   Previewer Caption 10  
   Previewer Procedure 10  
   Start Maximized 10  
   Start Pagelist 10  
   Zoom percent 10  
   Zoom type 10  
 Icetips Support 11, 27, 54  
 Icetips Website 11, 27  
 Icetips Xplore 2.0 40  
 Icetips Xplore Global Extension[Required] 4  
 IMAGES 57  
 Implementing Xplore 57  
 Initial release 46  
 Initial Sort Order...  
   First column 14  
   Key 14

Previous Session 14  
 Internet Explorer 11 35  
 Invoke Right click POPUP menu 8

**- L -**

Legacy 40  
 Less than 30  
 LIBSRC 66  
 License Agreement 2, 41  
 List boxes 7  
 list-box 35  
 Listbox background color 46  
 list-box color 35  
 Listbox font 46  
 list-box font 35  
 list-box size 35  
 list-box style 35  
 Listbox width 46  
 Locator  
   Entry 15  
   Incremental 15  
   None 15  
   Step 15  
 Locator control 12

**- M -**

May 4, 2011 46  
 May 9, 2011 46  
 Menus/Sub-Menus 23  
 Message(...) issued... 12  
 Move 25  
 Multi-DLL Requirements 66  
 Multiple Format Strings 12  
 Multiple Keys on TABs 12

**- N -**

NewSelection Tab/Radio 12  
 non-English 64  
 Not Equal 30  
 NoXplore 63

**- O -**

Offsets  
 Column Width 9, 20  
 Data Offset 9, 20  
 Header Offset 9, 20  
 Header Text 9, 20  
 Old Documentation 56  
 Output 29  
 Output Menu 29, 34  
 Override 7

**- P -**

Page 34  
 Paper type 67  
 Paper:Letter 67  
 Popup 8  
 POPUP menu 69  
 Preview 24  
 Previewers 10  
 Primary Key 63  
 Print All 34, 67  
 Print Page 34, 67  
 PRNProp.CLW 10  
 Procedure extension templates 7  
 Properties 29

**- Q -**

Quick Start 4

**- R -**

Release Date 11, 27  
 Re-Order Option 12  
 Report Previewer 67  
 Reset Browse attributes back to Default 8  
 Reset Column Widths to widest data 8  
 Reset the column 29  
 RPM 10  
 RPM previewer 69  
 Runtime DLL 11, 27

**- S -**

Save/Restore browse 12  
 Select Extension 4  
 Selected column 29  
 Separate TABs for... 12  
 Separator character 67  
 September 10, 2011 46  
 September 11, 2011 46  
 September 9, 2011 46  
 SetFilter 69  
 SetItemEnable 64  
 Sheet Control 12  
 Size 25  
 Sort Field 18  
 Sort Field Elements 15  
 Sort on <Column Header> 29  
 Sort Sequence 18  
 SPIN 12  
 STRING 12  
 Strings 12  
 Style sheet 35  
 Style sheet file 35, 46  
 Sub-menus 29  
 Support 11, 27  
 Support tab 54

**- T -**

TAB 12  
 TAB Selection for Column 15  
 TEMPLATE 57  
 Template name 11, 27  
 Templates 7  
 Text for sorted order 12  
 This Page 24  
 Tips & Tricks 69  
 Toggle Row/Column Highlight Bar 8  
 Tokens for sort order 12

**- U -**

Update on Popup 24  
 Upgrade Issues 40  
 UPPER 67

UPPER required for... 12  
 Use variable 24  
 User Filter 30  
 User Reference 2

## - V -

Variable 12  
 Version 11, 27  
 Version History 46  
 Visual Clue for Re-Order Seq  
   >Header 12  
   Nothing 12  
   Text bar 12  
   Underline 12  
 Void Filter 30

## - W -

Welcome 2  
 Window color 35  
 Window font 35, 46  
 Window style 35

## - X -

Xplore 29  
 Xplore Browse Extension 9, 11, 20  
 Xplore Class 34, 35  
 Xplore Default Options  
   All 9, 20  
   Clear 9, 20  
   Global 20  
   Manual 9, 20  
 Xplore Features 68  
 Xplore menu 9, 20, 23, 29  
   Border 31  
   Colors 31  
   Data Just Center 31  
   Data Just Decimal 31  
   Data Just Left 31  
   Data Just Right 31  
   Data offset 31  
   Fixed 31  
   Hdr Just Center 31  
   Hdr Just Left 31  
   Hdr Just Right 31

Header offset 31  
 Header Text 31  
 Hrd Just Center 31  
 ListBox 31  
 Move Left 31  
 Move Right 31  
 Resize 31  
 Underline 31  
 Width 31  
 Xplore Menu (runtime) 29  
 Xplore Options 60  
 Xplore Properties  
   AllPreview 67  
   AsciiFileName 67  
   FilterShared 67  
   Graph 67  
   HeaderStyle 67  
   HtmlFileName 67  
   MaxFontSize 67  
   MinFontSize 67  
   PagePreview 67  
   PaperType 67  
   Separator 67  
   ShellExexcute 67  
   Upper 67  
 Xplore.CLW 66  
 Xplore: Parent for a Hand-coded ListBox 28  
 Xplore: ReFormat/ReOrder a hand-coded ListBox 28  
 XploreEn.TRN 64  
 XploreRt.CLW 66  
 Xport.CSV 34, 67  
 Xport.HTM 34, 35, 67  
 Xport.htm.css 35