



Icetips Alta LLC

3430 East Highway 101, Ste# 28
Port Angeles WA 98362

E-mail: support@icetips.com

Website: www.icetips.com

Report Preview

File

Page: 1 of 6 Step: 20

Pages To Print: Search: Copies: 1

Page	Size
1	57,022
2	57,076
3	57,084
4	56,992
5	57,070
6	31,328

PROJECT: _____

PROJECT NO.: _____

ADDRESS: _____

DATE: _____

SUPERINTENDENT: _____

TEMP: AM _____ PM _____

WEATHER CONDITIONS: Sunny Rain Snow Ice Cloudy

EMPLOYEES	EMPLOYEE / CLASSIFICATION	RATE	HRS.	WORK PERFORMED

MATERIAL	QTY.	RECEIVED MATERIAL	QTY.	CONSUMED MATERIAL

EQUIPMENT	COMPANY OWNED EQUIPMENT	HRS.	RENTED EQUIPMENT	RATE	HRS.

Icetips

Previewer

IceTips Previewer

Copyright ©2002-2018 IceTips Alta LLC.

All rights reserved. No parts of this work may be reproduced in any form or by any means - graphic, electronic, or mechanical, including photocopying, recording, taping, or information storage and retrieval systems - without the written permission of the publisher.

Products that are referred to in this document may be either trademarks and/or registered trademarks of the respective owners. The publisher and the author make no claim to these trademarks.

While every precaution has been taken in the preparation of this document, the publisher and the author assume no responsibility for errors or omissions, or for damages resulting from the use of information contained in this document or from the use of programs and source code that may accompany it. In no event shall the publisher and the author be liable for any loss of profit or any other commercial damage caused or alleged to have been caused directly or indirectly by this document.

Published: October 2018

Publisher

IceTips Creative, Inc.

Managing Editor

Arnor Baldvinsson

Table of Contents

Foreword	0
Part I Contents	2
Part II Previewer Wizard	5
1 Actions	6
2 Options	7
3 Export	9
4 Import	10
Part III Previewer Extension Templates	12
1 Icetips Previewer Global template	13
2 Apply to Application	14
3 Clarion Report Target Support	18
4 Call Previewer	22
Icetips Previewer Tab	22
CSV Export Tab	25
Fomin Report Builder Tab	30
Information Tab	31
Support Tab	32
5 Mouse Wheel Support	35
Global Extension	35
Mouse Wheel Support in Previewer	36
6 Printer Selection	38
Global Extension	38
Enable Printer Selection	39
7 How to detect Previewer	42
Part IV Previewer Control Templates	45
1 CPCS Excel/Ascii Export	46
2 CSV Save Button	48
3 Page Of Pages	50
4 PDF Tools	52
5 Save As Button	53
6 Save Buttons	55
Part V Previewer Code Templates	58
1 Call Previewer	59
Part VI Misc	64
1 License Agreement	64

2	Limitations	69
3	Contact us	70
4	Installed Files	71
5	Version History	84
	Index	98

Part



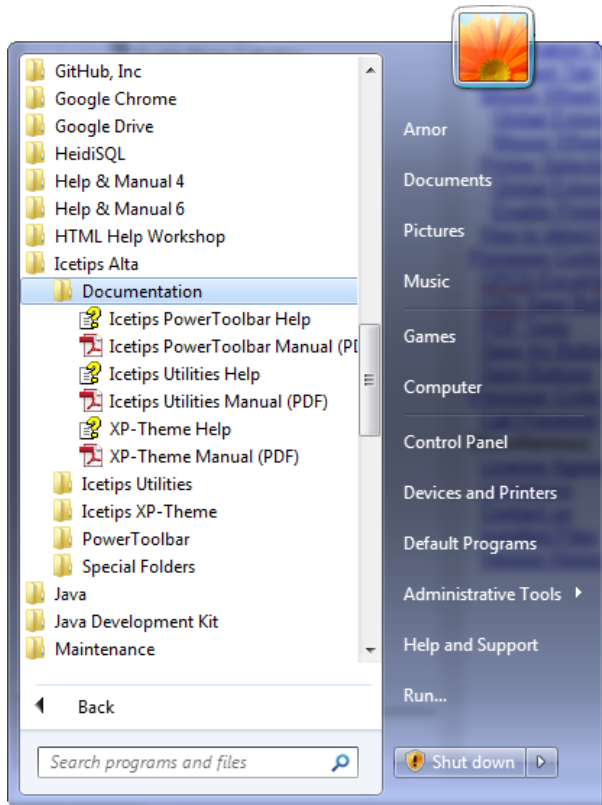
Chapter 1 - Contents

1 Contents

Welcome to the Icetips Previewer templates. This documentation is an on going project and may not correctly show all options available in the current release.

Documents updated	May 14, 2014
Version/Build	2018.10.407.123
Build Date	October 14, 2018
Copyright	Copyright ©2002-2018 Icetips Alta LLC.
Author	Arnór Baldvinsson

This help is about the templates that you can access in Clarion. You can find a copy of this help in a ITPrev.pdf file in your Clarion\3rdParty\Docs\ITPrev folder or in the accessory\documents\icetips folder in the new IDE installs. You can also go to the start menu in Windows and go to "**Programs | Icetips Alta | Documentation**".



Also, please [visit our website](#) for articles about the Icetips Previewer. Some of these articles no longer apply to newly created Previewer procedures, but do apply to procedures created with older versions of the Icetips Previewer Wizard.

For more product information, please check out:

[Icetips Youtube channel](#)
[Tips and tricks](#)
[Icetips Blog](#)

Contents in this documentation:

[Previewer Wizard](#)
[Actions](#)
[Options](#)
[Export](#)
[Import](#)
[Previewer Extension Templates](#)
[Icetips Previewer Global Template](#)
[Apply to Application](#)
[Clarion Report Target Support](#)
[Call Previewer](#)
[Icetips Previewer Tab](#)
[CSV Export Tab](#)
[Fomin Report Builder Tab](#)
[Information Tab](#)
[Support Tab](#)
[Mouse Wheel Support](#)
[Global Extension](#)
[Mouse Wheel Support in Previewer](#)
[Printer Selection](#)
[Global Extension](#)
[Enable Printer Selection](#)
[How to detect Previewer](#)
[Previewer Control Templates](#)
[CPCS Excel/Ascii Export](#)
[CSV Save Button](#)
[PDF Tools](#)
[Save As Button](#)
[Save Buttons](#)
[Previewer Code Templates](#)
[Call Previewer](#)
Miscellaneous
[License Agreement](#)
[Limitations](#)
[Contact us](#)
[Installed Files](#)
[Version History](#)

Part

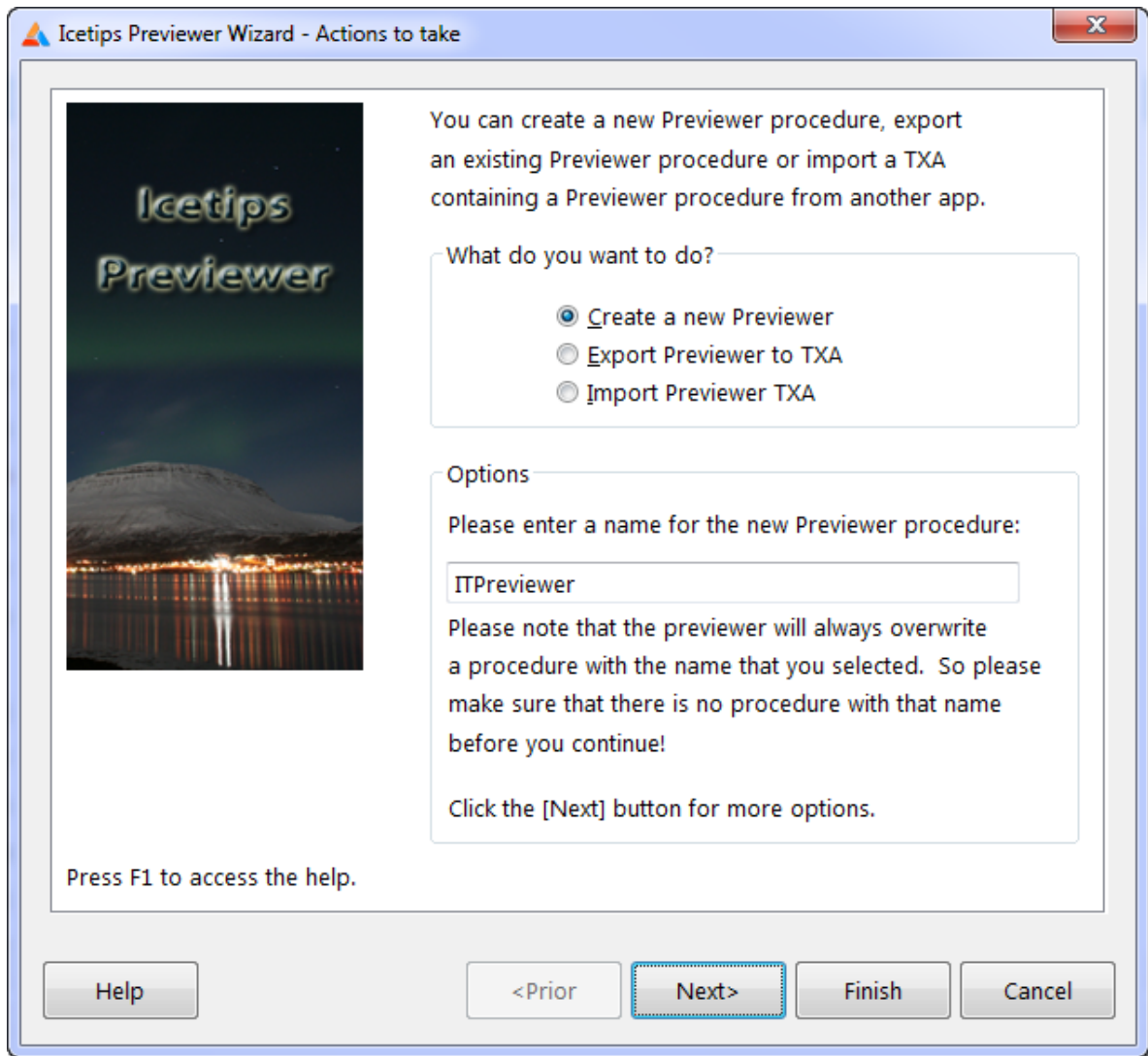


Chapter 2 - Previewer Wizard

2 Previewer Wizard

The Icetips Previewer Wizard can do one of three things:

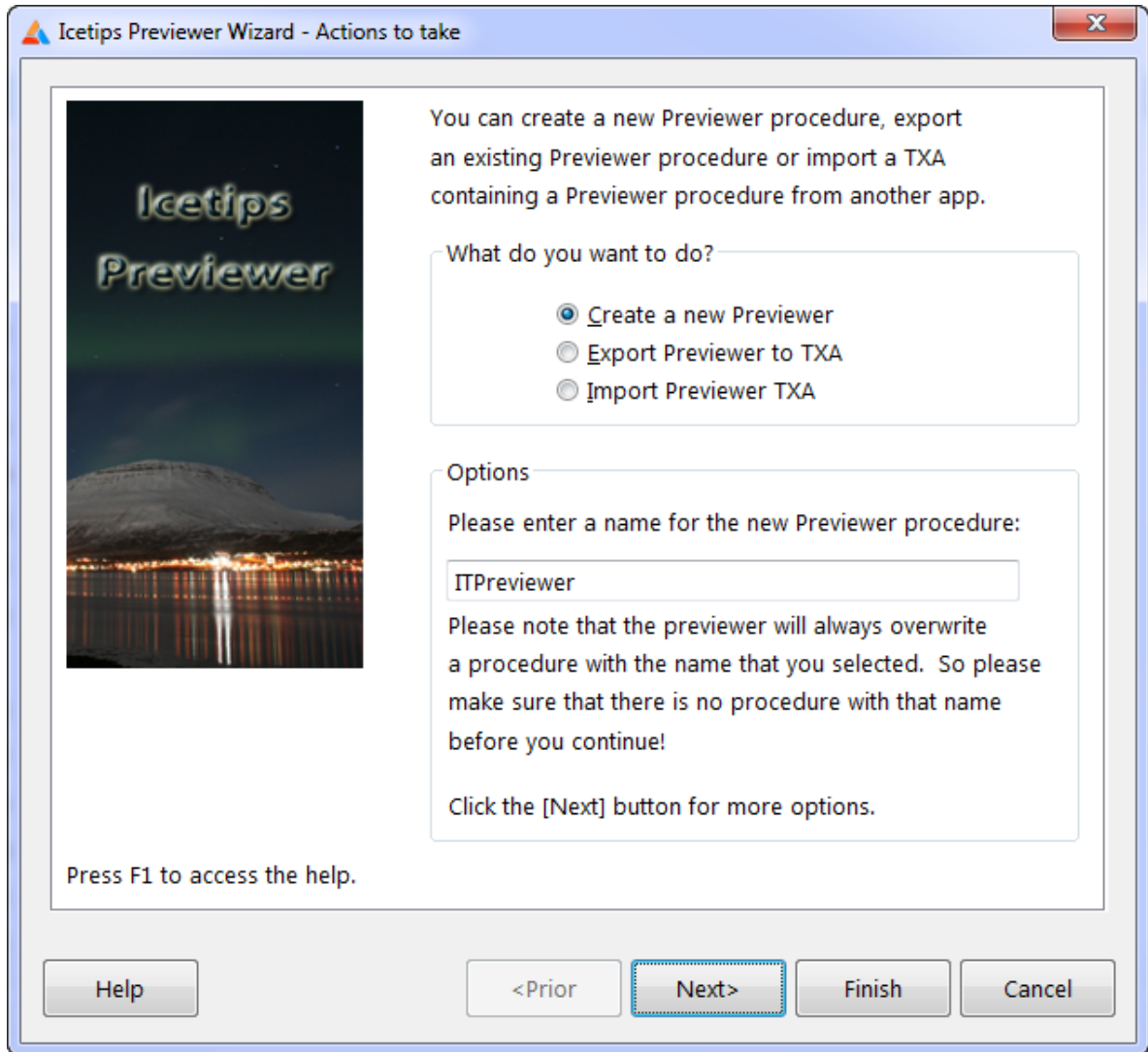
1. [Create a new](#) Previewer procedure
2. [Export](#) a Previewer procedure to TXA
3. [Import](#) a Previewer procedure from TXA.



When creating a new Previewer procedure you can customize the initial look of the previewer and specify what extensions you want the previewer to add. Note that some extensions may be dependent on what templates you have added to the application, such as the Clarion 6 target templates.

2.1 Actions

The Actions window prompts you to select what actions you want to take. You can create a new Previewer procedure in your application, export an existing Previewer procedure to TXA or import an existing procedure from TXA.



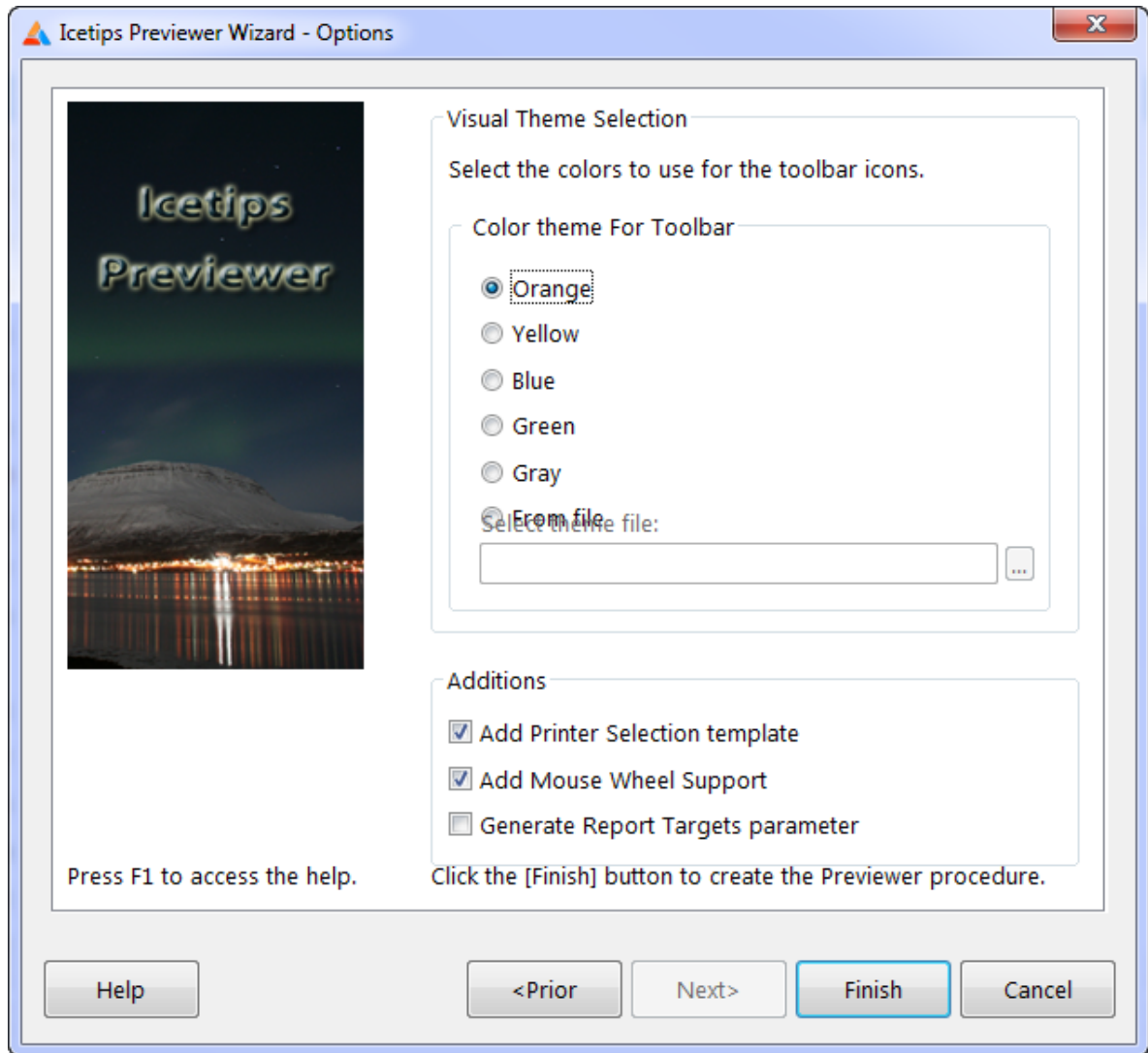
If you are creating a new procedure, the "Options" box prompts you to enter a name for the new Previewer procedure. It defaults to **ITPreviewer**. Note that this is the name for the procedure and as such must obey all rules about procedure names and labels in the Clarion language. The name is required and can not be left empty.

Warning: If a procedure with the name you enter already exists it will be overwritten

Click the [\[Next\]](#) button to move on to the [Options window](#).

2.2 Options

The Options window allows you to customize the Previewer procedure before you create it. If you are using Clarion 6, and do not have the [Clarion 6 target templates/Report Output Generators](#), or do not know what that is, **please do NOT check the "Generate Clarion 6 Target parameter" option!**



Color theme For Toolbar

This allows you to pick what color scheme you want to use for the icons on buttons on the Previewer toolbar. We supply 5 different color icons to use on the buttons. You can also use the Previewer Theme Editor to create your own themes and use them to make a consistent look and feel for your Previewer. Note that you can always at any time change the icons and anything else in the Previewer window. What you select here is the **initial color scheme**, which you can change at any time after the procedure is created.

Add Printer Selection template

This adds the Printer Selection extension template to the Previewer procedure and sets it up to be able to print your reports directly from Previewer to selected printers without leaving Previewer. This

extension is added by default. This extension depends on a global template that is also added if it has not been added already.

Add Mouse Wheel Support

This adds the Mouse Wheel extension, which makes it possible to scroll through the report using the mouse wheel. Since most mice being sold today have a wheel we add this as default to the new Previewer. This extension depends on a global template that is also added if it has not been added already.

Generate Clarion Report Target parameter

This option modifies the parameter and prototype of the Previewer procedure to add a single parameter to pass the report selector class to the Previewer so it can automatically detect what targets are available and print to them from the Previewer. The Clarion Report Targets are [templates](#) that you can get from [Softvelocity](#) that allows your reports to be exported to HTML, XML, TEXT or PDF. If you have Clarion Enterprise Edition, those templates come with the product. When checked this will add one parameter to the prototype:

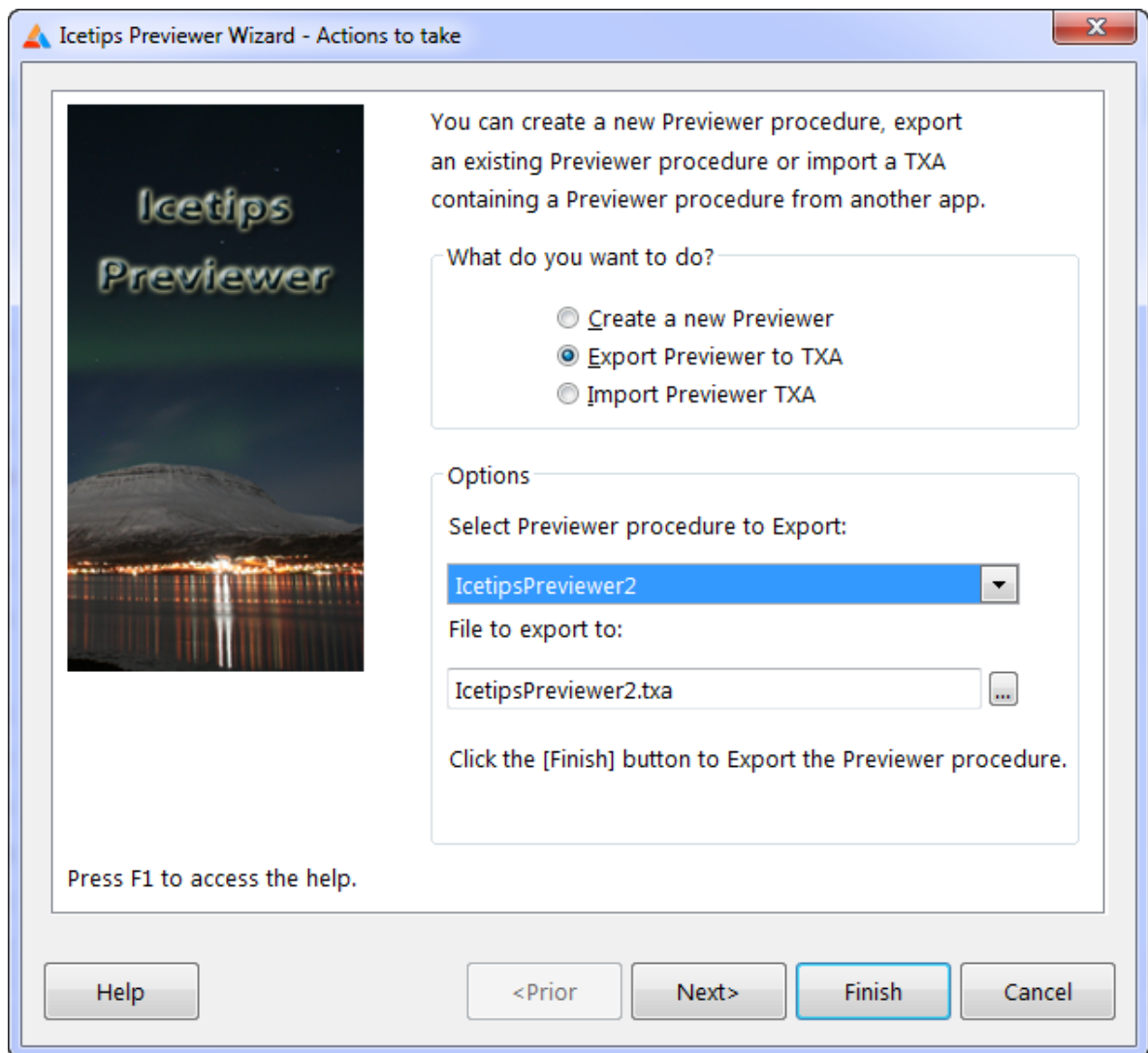
```
, <*ReportTargetSelectorClass pTargetSelector>
```

This should only be used if you have added any of the "Clarion Report Target" extension templates to your application!

When you have completed your selections, you can click the [Finish] button to finish creating the new Previewer procedure.

2.3 Export

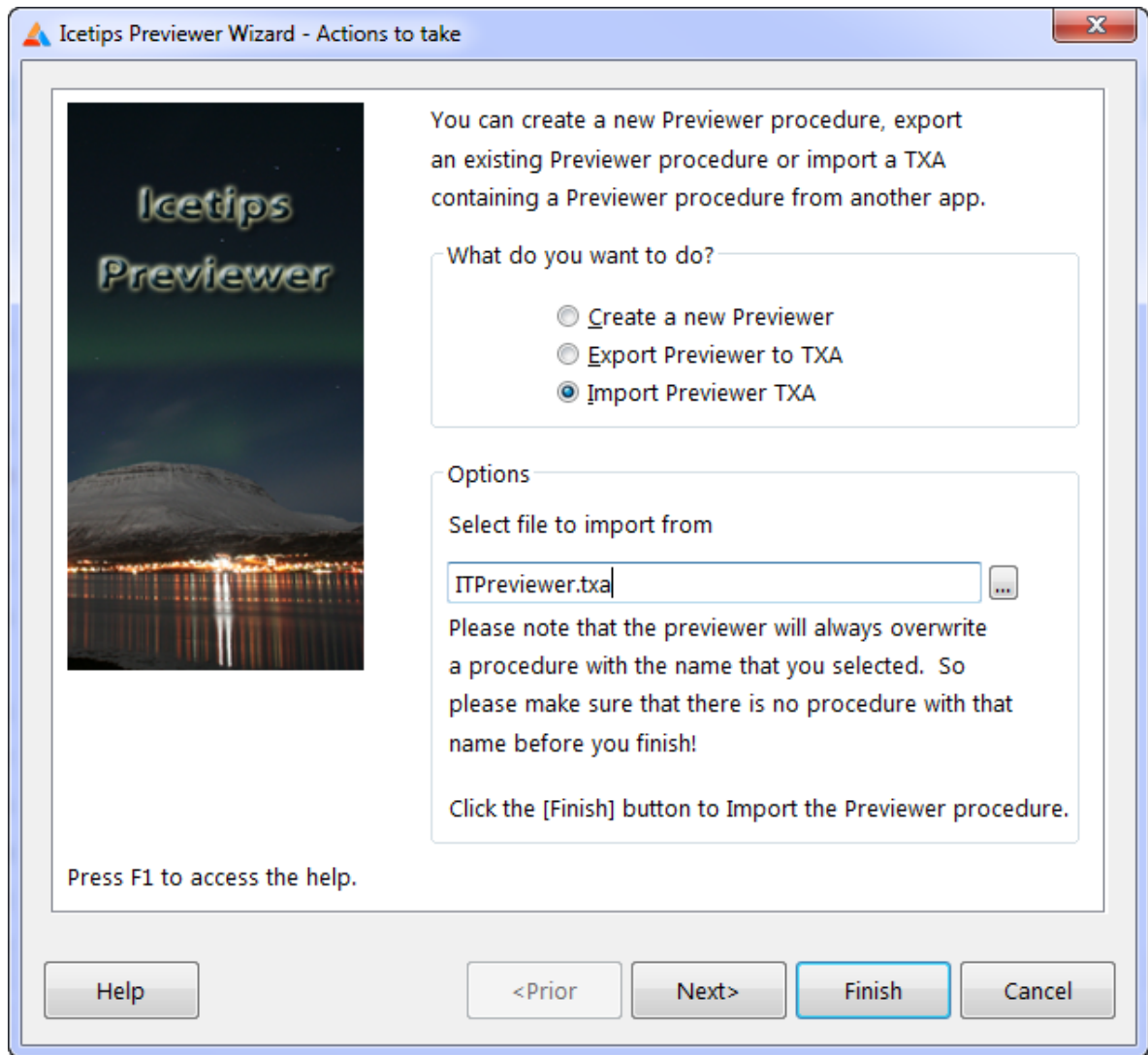
The Export option prompts you to select a procedure to export. When you select the procedure the template automatically creates and suggests a filename for it using the procedure name and the .txa extension. You can enter another name if you want to or select it by clicking the [...] button.



2.4 Import

The Import option prompts you for a name of a .txa file to import to your application. You could use this to import any TXA file as there is nothing specific for the Previewer when using this option.

Warning: Under some circumstances importing with the template may cause problems with the imported procedure. You can always use "File | Import Text" from the Clarion IDE main menu to import an existing Previewer procedure in TXA format.



Part



Chapter 3 - Previewer Extension Templates

3 Previewer Extension Templates

The Icetips Previewer comes with several extension templates, both to add the Previewer to reports and also to enhance the Previewer itself. All these templates are detailed in the PDF documentation which you should read in addition to this help.

The main extensions are:

[Icetips Previewer Global extension](#)

[Apply to Application](#) extension to apply a previewer procedure to all reports in the application

[How to detect Previewer](#) extension to show how the Previewer can be detected by template code

[Call Previewer](#) extension for Report procedures

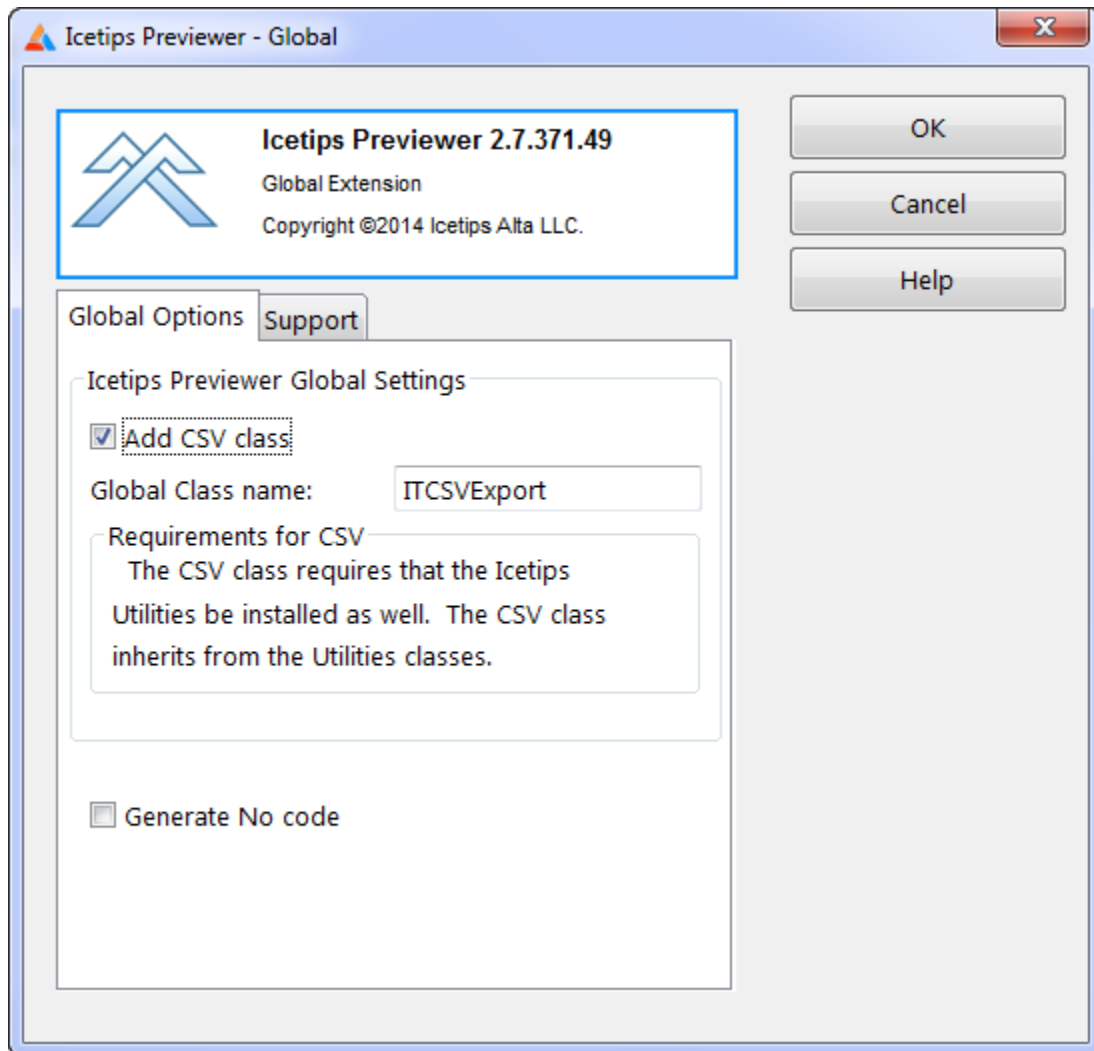
[Printer Selection](#) extension for the Previewer

[Mouse Wheel](#) extension for the Previewer

[Clarion Report Target support](#) for the Previewer

3.1 Icetips Previewer Global template

Exporting to comma separated files (CSV) is quite easy from the Icetips Previewer. This global extension is necessary for that to be possible and for you to be able to use the CSV option on the report.



Add CSV Class

If this is checked you have access to the CSV export on the [Call Previewer](#) extension template on the report. Note that the CSV export uses the Icetips Utilities which must be installed and the global template added to the global extension templates in the app.

Global Class name

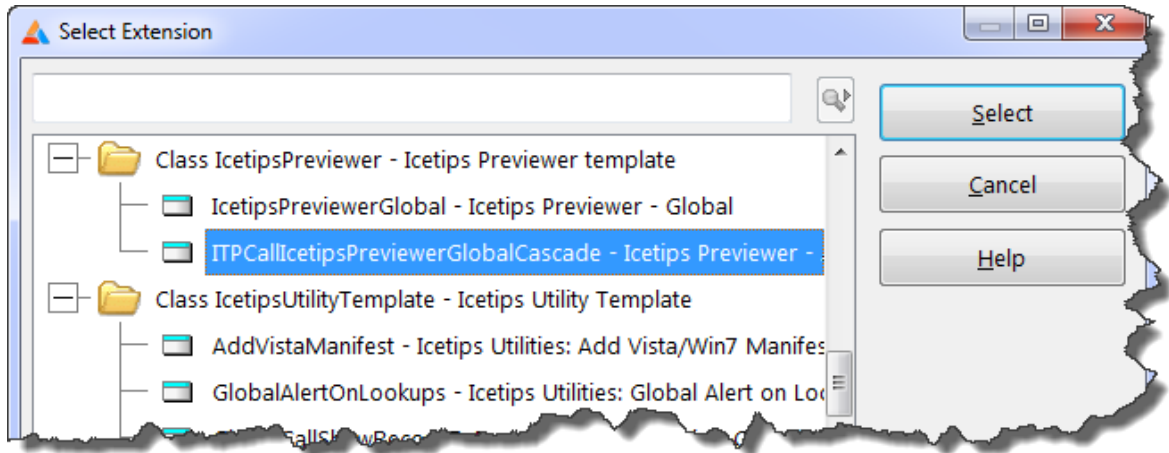
This is the name for the CSV class name. It defaults to ITCSVExport

Generate No code

If this is checked no code will be generated by this template.

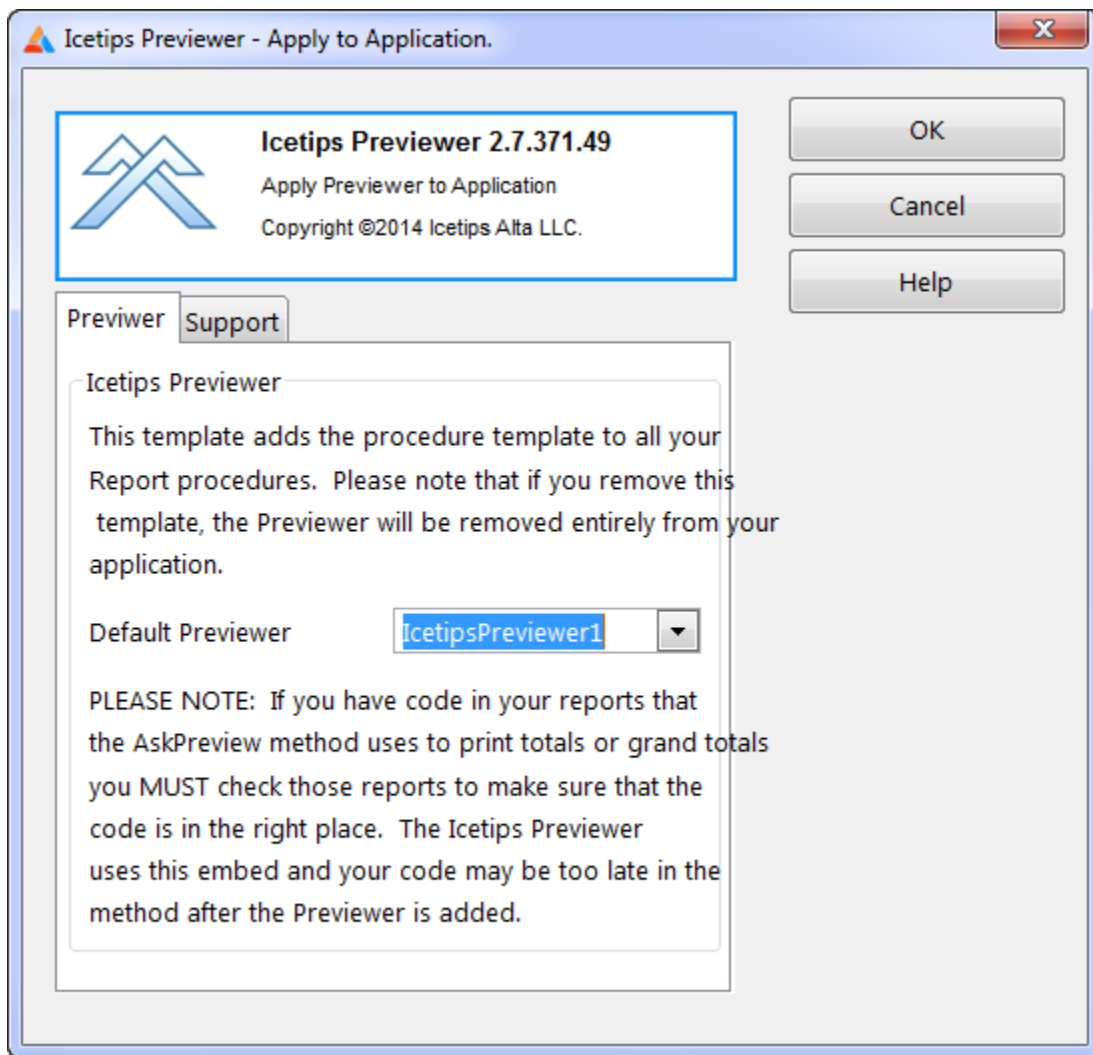
3.2 Apply to Application

This is a global extension template that can be used to apply the Icetips Previewer to all the report procedures in your application.

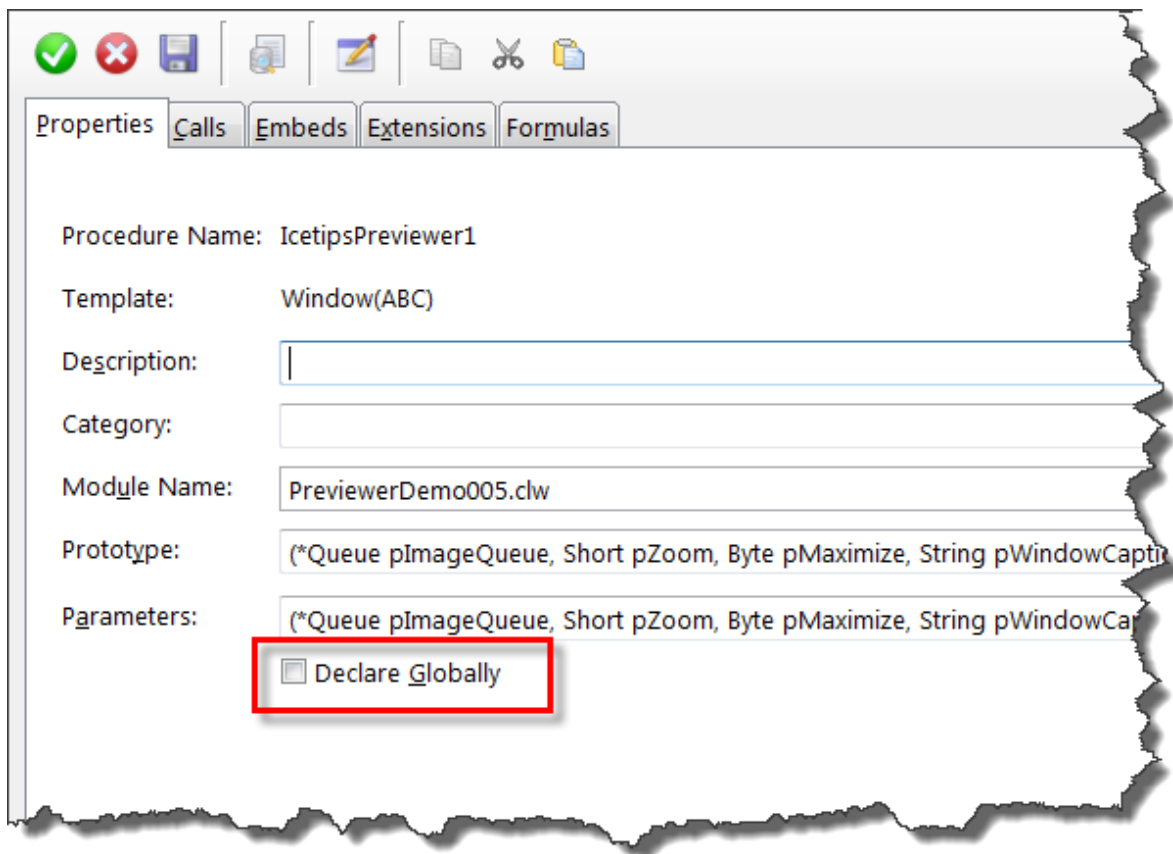


After you apply this template, you must do two things for this to work properly:

1. You must select a Previewer procedure to use as a default Previewer procedure for the reports. If this is not done, the extension templates on the reports will not know what procedure to use and you will get compile errors on every report procedure.



2. You must check the "Declare Globally" on the Previewer procedure properties window. If this is not done, the report procedures will not be able to find the Previewer Procedure since it's not attached to the reports, and you will get compile errors on every report procedure.



When using this template **you can not remove the Icetips Previewer from your reports**, since this template will simply add the template again. You have 3 ways to accomplish the same thing, all slightly different. These 3 options are all done on the "Call the Icetips Previewer" extension that is on your Report procedure.

1. Check the "**Generate No Code**" on the previewer extension. This is **the best option** as it simply does not generate any of the code that the Icetips Previewer normally generates.
2. Check the "**Do NOT call previewer**" on the previewer extension. This option generates all the code for the Previewer, but it is all commented out. I.e. Instead of something like this:

```

SetTarget(Report)                                     ! Icetips Previewer
! Icetips Previewer, ABC code
  If SELF.SkipPreview=False
    If IcetipsPreviewer(SELF.PreviewQueue, -2, 1, 'Report Preview', 1, TargetSelector)
      SELF.Report {PROP:FlushPreview} = True
      FREE(SELF.PreviewQueue)
    End
  Else
    SELF.Report {PROP:FlushPreview} = True
    FREE(SELF.PreviewQueue)
  End
SetTarget()                                           ! Icetips Previewer

```

You would get something like this:

```

! SetTarget(Report)                                   ! Icetips Previewer
! Icetips Previewer, ABC code
  If SELF.SkipPreview=False
    ! If IcetipsPreviewer(SELF.PreviewQueue, -2, 1, 'Report Preview', 1, TargetSelector)
    ! SELF.Report {PROP:FlushPreview} = True

```

```
        ! FREE(SELF.PreviewQueue)
    ! End
Else
    ! SELF.Report {PROP:FlushPreview} = True
    ! FREE(SELF.PreviewQueue)
End
! SetTarget()                                ! Icetips Previewer
```

Note that all the code that makes the previewer work is commented out. This is convenient if you want to take a look at how the code is constructed without it actually executing.

3. Add a "**Condition for use**" that can never be true, such as $1=2$. This creates a condition around the Icetips Previewer call that looks like:

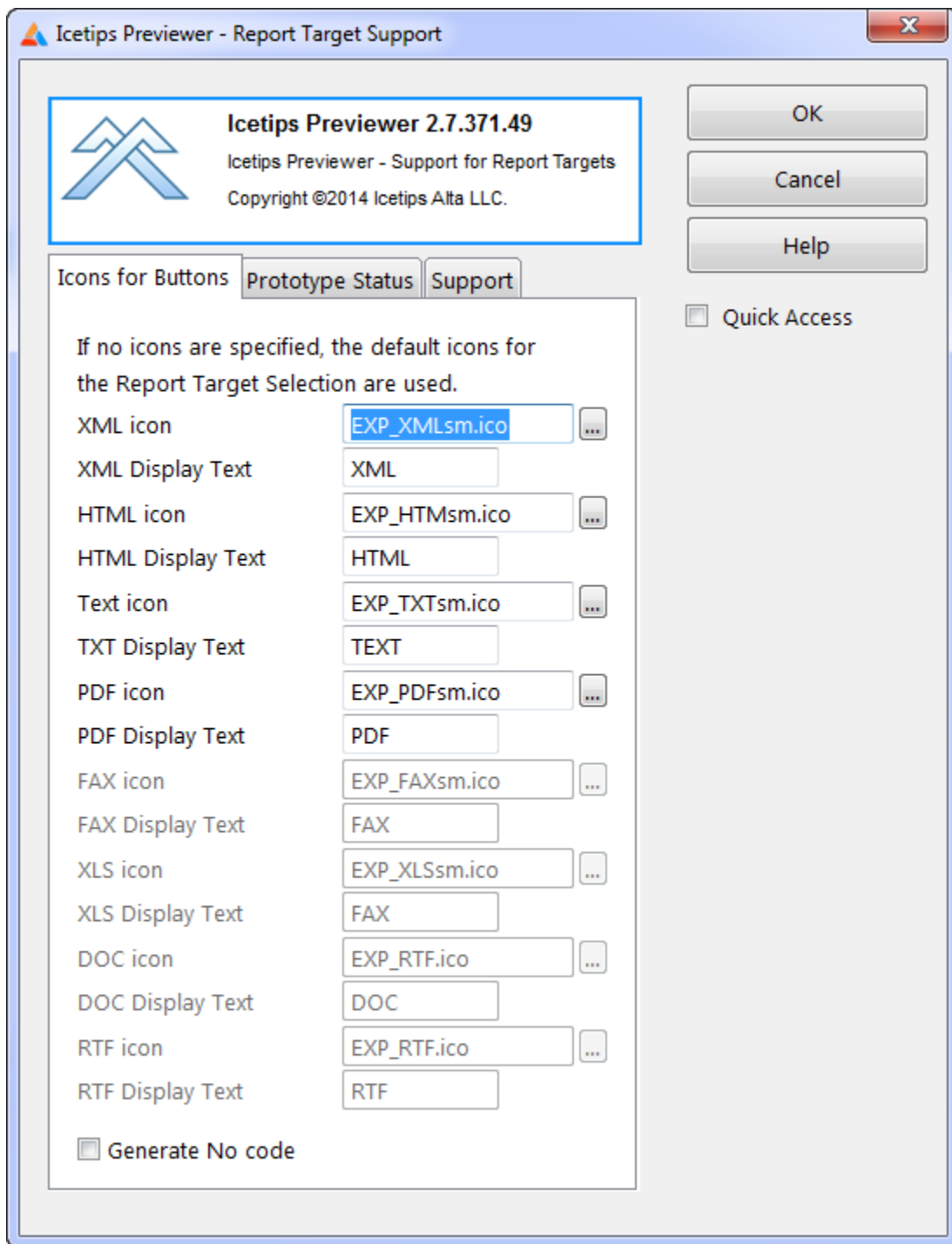
```
If 1=2
    If ITPreviewer...
    End
End
```

All the code is in place but will never execute because the condition you used is logically impossible (1 can never be equal to 2!)

3.3 Clarion Report Target Support

The Clarion Report Target Support extension prepares the Icetips Previewer for using the Report Target selection templates and the [Save Buttons](#) and [Save As Button](#) control templates.

Note: *This template is **ONLY** available if you have added one or more of the Softvelocity target templates to your application. If you have not, then you are not going to find this template in the list of extension templates to apply!*

**XML icon**

This allows you to select an icon for the XML export button. It defaults to EXP_XMLsm.ico.

XML Display Text

This is used to match the names with the target selector names. Generally this should never need to be changed.

HTML icon

This allows you to select an icon for the HTML export button. It defaults to EXP_HTMLsm.ico.

HTML Display Text

This is used to match the names with the target selector names. Generally this should never need to be changed.

Text icon

This allows you to select an icon for the TXT export button. It defaults to EXP_TXTsm.ico.

TXT Display Text

This is used to match the names with the target selector names. Generally this should never need to be changed.

PDF icon

This allows you to select an icon for the PDF export button. It defaults to EXP_PDFsm.ico.

PDF Display Text

This is used to match the names with the target selector names. Generally this should never need to be changed.

FAX icon

This allows you to select an icon for the FAX export button. It defaults to EXP_FAXsm.ico.

FAX Display Text

This is used to match the names with the target selector names. Generally this should never need to be changed.

XLS icon

This allows you to select an icon for the MS Excel/CSV export button. It defaults to EXP_XLSsm.ico.

XLS Display Text

This is used to match the names with the target selector names. Generally this should never need to be changed.

DOC icon

This allows you to select an icon for the MS Word export button. It defaults to EXP_RTFsm.ico.

DOC Display Text

This is used to match the names with the target selector names. Generally this should never need to be changed.

RTF icon

This allows you to select an icon for the Rich Text Format (RTF) export button. It defaults to EXP_RTFsm.ico.

RTF Display Text

This is used to match the names with the target selector names. Generally this should never need to be changed.

Generate No code

Check this if you do not want this template to generate any code into the Previewer procedure.

This template requires that an additional parameter be added to the prototype/parameters of the Icetips Previewer procedure:

```
<*ReportTargetSelectorClass pTargetSelector>
```


The template will warn if the prototype is not correctly set up.

See also the [Save Buttons](#) and [Save As Button](#) control templates for more information.

3.4 Call Previewer

This template is what connects your reports to the Icetips Previewer. It must be applied to each report where you want to use the Previewer. That can be done either manually or by using the "[Apply to Application](#)" global extension template which will automatically add the Previewer to every report in the application.

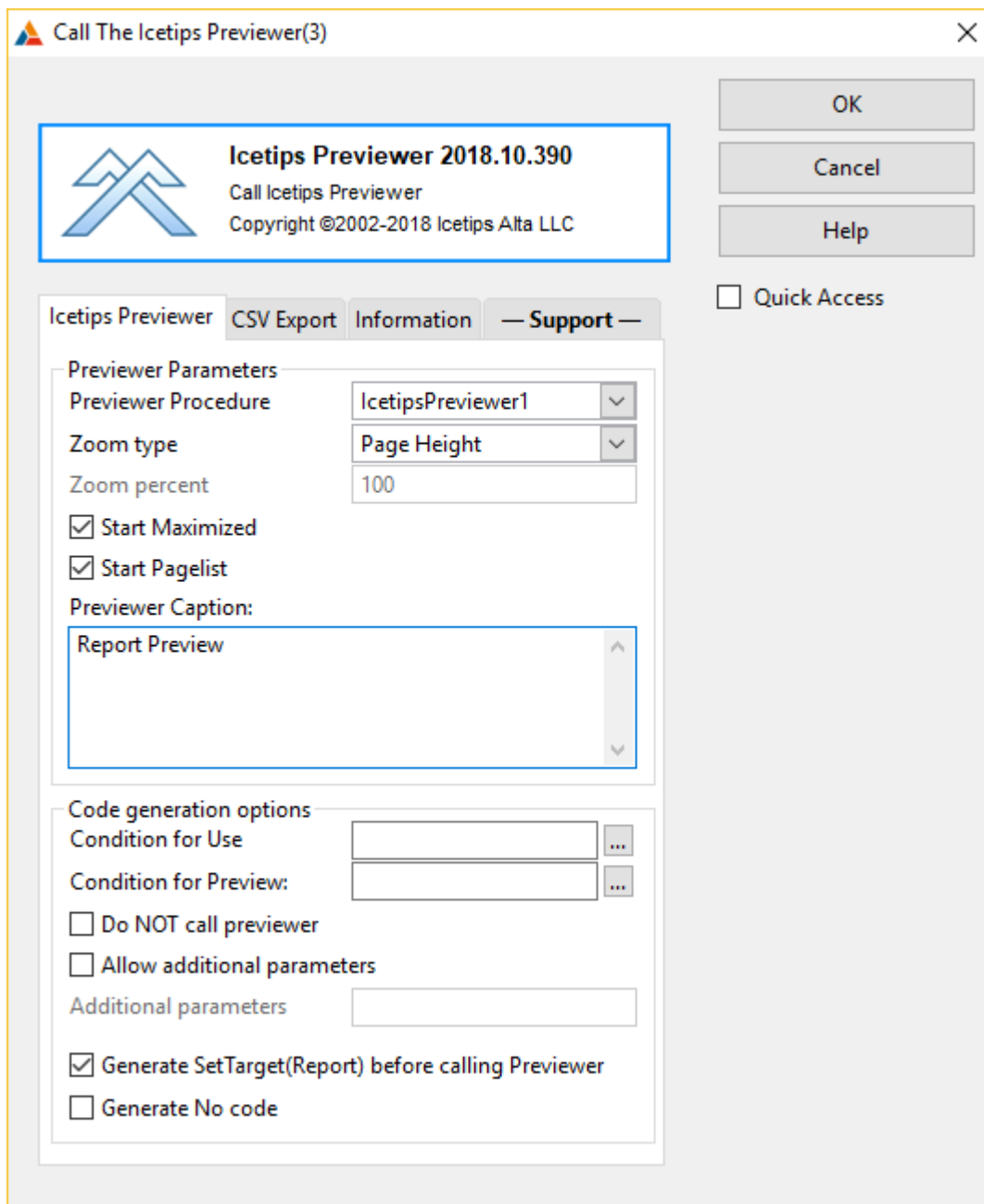
On standard reports there are four tabs, [Icetips Previewer](#), [CSV Export](#), "Information" and Support. The "Icetips Previewer" tab contains prompts for the previewer and how the previewer will be opened from the report. CSV Export contains setup for the CSV Export button that can be added to the Previewer. The Information tab contains some good advise on how to use the conditions and is self documenting. The Support tab is the same in all our products and contains information about the build.

On reports that use the Fomin Report Builder template, a [Fomin Report Builder](#) tab is added.

3.4.1 Icetips Previewer Tab

Call Previewer

This is where everything is set up to tell the Previewer procedure how you want this report preview to work.



Previewer Procedure

Here you can select the previewer procedure that you want to use. You can have multiple Previewer procedures in the same application with different look or different functionality.

Zoom type

This dropdown has 4 options: "Page Height", "Page Width", "Full (100%)" and "Value". This is used to specify the initial zoom for the report when the previewer displays it. If Value is selected, then the "Zoom percent" is enabled and you can type in what zoom percent value you want to use as initial zoom. This is set to "Page Height" by default.

Zoom percent

This is enabled when a zoom type of "Value" is selected above. Here you can set what zoom percent

you want as default. This is set to 100 by default. Note that if this is not set, i.e. the entry is empty, then the zoom is set to 0. Special values for the zoom are:

-2 = Page Height
-1 = Page Width
0 = 100%
Any other value, zoom percent

Start Maximized

This indicates if the Previewer window should start maximized. Note that if the Previewer procedure saves/restores window position then this setting is overridden by whatever the saved state of the window was. I.e. if this is set to true and the Previewer was last closed non-maximized, then the window will start non maximized. This is set to True by default.

Start Pagelist

This indicates if the pagelist on the left of the Previewer window should be opened when the Previewer window is opened. This is set to True by default.

Previewer Caption

This is the caption of the previewer window when it opens. This is set to "Report Preview" by default.

Condition for Use

This can be used to set up condition to call the previewer procedure. If the condition evaluates to false, then the previewer is not called. Note that multiple instances of the previewer do not construct a IF/ELSIF/END structure but a IF/ENDIF/IF/ENDIF structure so that the second conditional previewer will most likely not have any page images to work on. This is best used with a single instance or if you control the conditions in embed code and make sure that the logic is correct. This is empty by default.

Condition for Preview

This can be used to set up a condition for the entire code for the previewer. All the generated code is inside an IF/END section and at the SELF.SkipPreview is set to FALSE. This is currently ONLY implemented in the ABC template. This option is new in build 2018.10 and is primarily for enabling skipping the Previewer entirely when using any of the report targets as the default print targets. If the condition is FALSE then the target will be used without any further user interaction. If the condition is TRUE then the Previewer is opened and the targets can be used from within the Previewer if needed.

This condition is only available if the "Condition for Use" is blank. The "Condition for Use" only wraps the actual call to the Previewer procedure in a condition.

Do NOT call previewer

If this option is used, all code to call the previewer is generated but is commented out. This can be useful if you want to construct the code by hand in the embed editor and use the generated code as a guide. This is set to false by default.

Allow additional parameters

This option enables the "Additional parameters" field, see below. Then you can add parameters to the parameterlist that is being passed to the Previewer. The list can start with a comma, but it is not required - the template will add it if it's missing. For example if you wanted to add a parameter you could do it like this:

```
,Loc:MyVariable
```

Note that some additional extensions and options may add parameters to the built-in list so you have to be careful to make sure that the parameters being passed from the report match the prototype/parameterlist of the previewer procedure.

Additional parameters

See above.

Generate SetTarget(Report) before calling Previewer

This is required if you want to have a reference to the report when you enter the Previewer procedure. This makes it possible for the previewer to retrieve information from the reports, such as landscape, job name, etc. which are vital if you are going to use the [Printer Selection](#) extension in the Previewer.

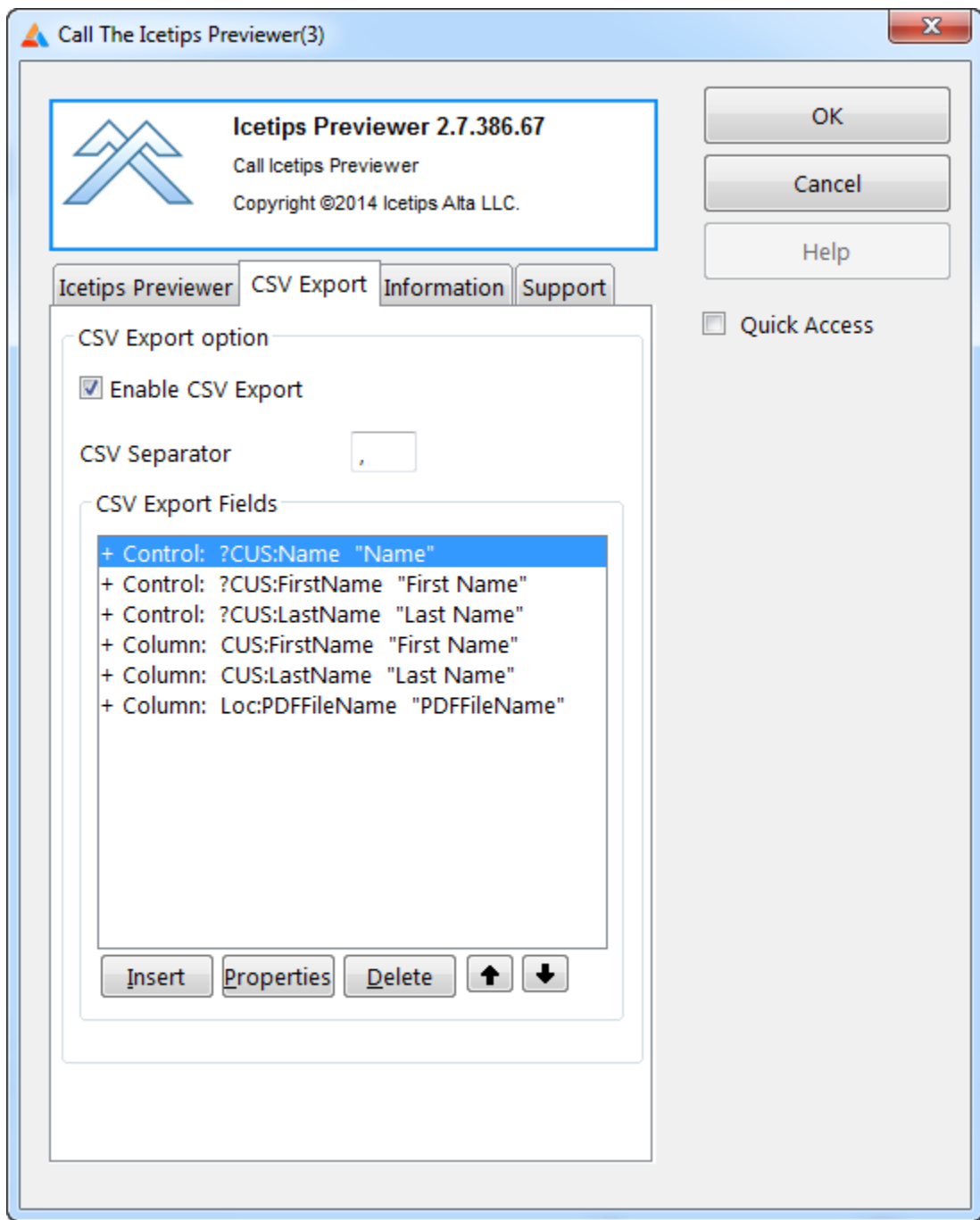
If this is not checked, your reports may not print correctly when printed from the Previewer. Make sure that you understand the implication of unchecking this option if you are using the [Printer Selection](#) template! This is set to True by default.

Generate No code

This allows you to stop generation of all the code that this template generates into the report procedure. See also [Apply to application](#) for more information about how to disable code generation. This is set to False by default.

3.4.2 CSV Export Tab**Call Previewer**

On the CSV Export tab you can specify what data you want to export. You can export data in controls on the report or you can export fields from files, local variables, etc. as "columns" The export is done immediately following the PRINT statement.



You can specify the separator character in the "CSV Separator" entry field. It defaults to a comma. Note that this is a single character only.

To add export fields, simply click the [Insert] button and it will take you to the insert/update form, which changes slightly if you select to use a "Control on Report" or "Column in a table".

Export Fields

Field Type

- Control on Report
- Column in a table

Control on Report

Report Control: ?CUS:FirstName

Options for this field

Data Column: CUS:FirstName

Export this field

CSV Header: First Name

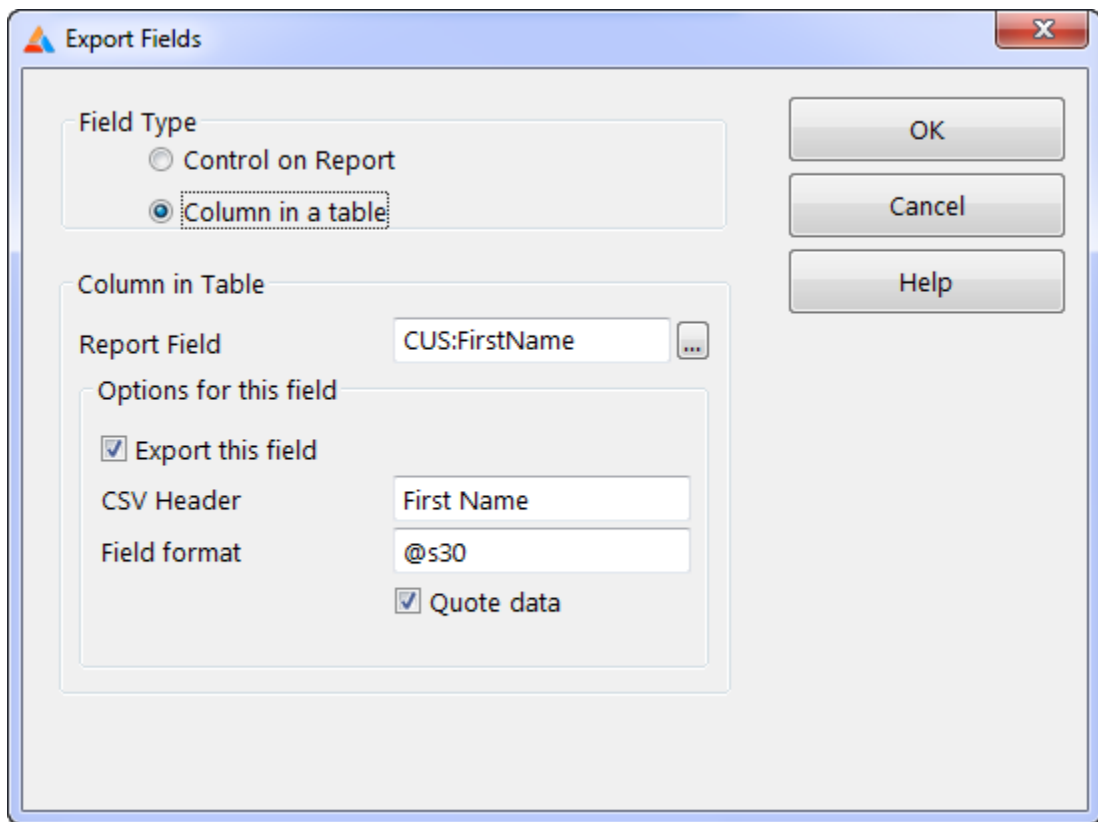
Field format: @s30

Quote data

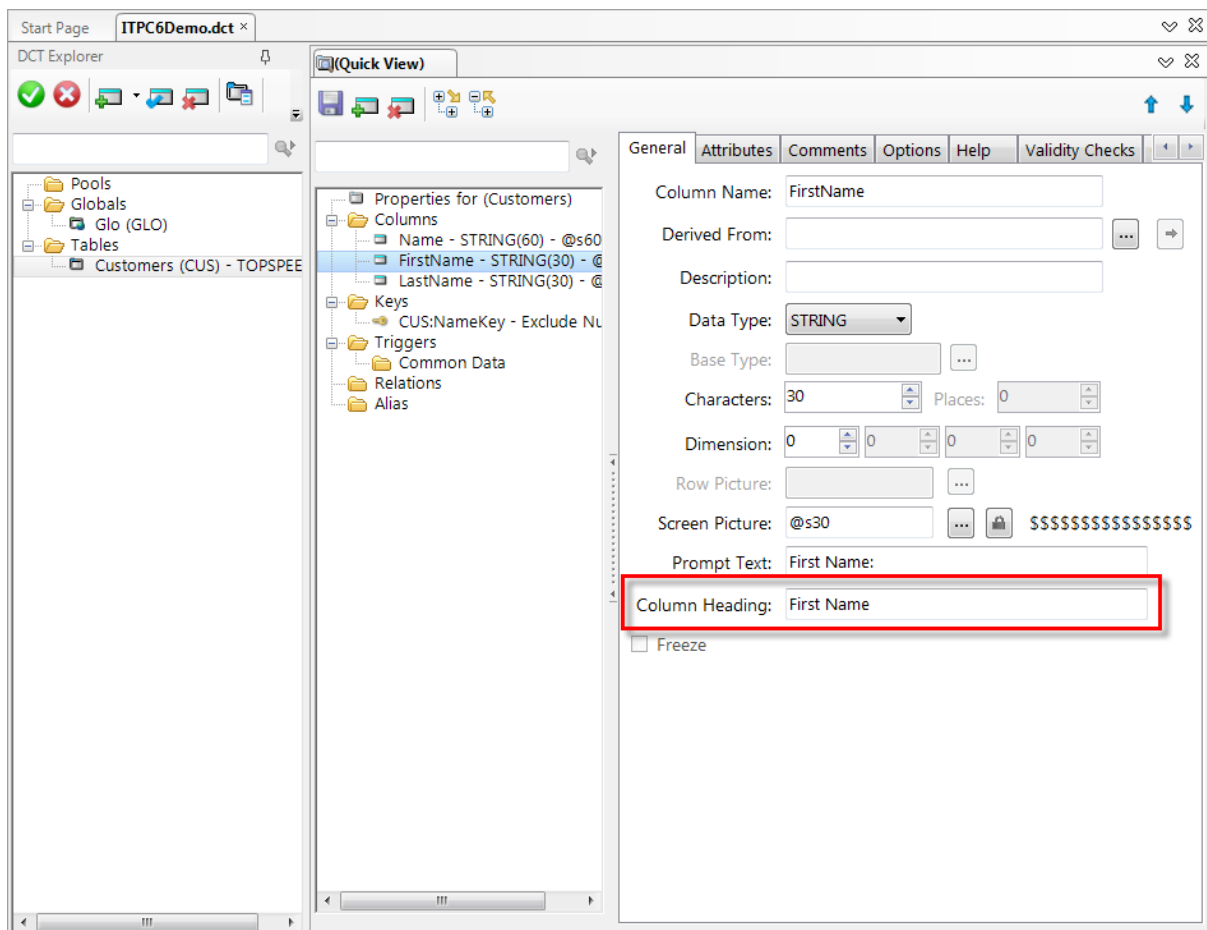
OK

Cancel

Help



For local, module or global variables you have to provide the header and field format. For controls the header is taken from the dictionary for that field and the format is taken from the report. For columns, the header and format for are taken from the dictionary. The header defaults to the "Column Heading" for the column in the dictionary.



You can then add the ["CSV Save Button"](#) control template on the Previewer window and you are all set! Yep, that is all there is to setting this up!

Below is an example of the generated code

```

ThisReport.TakeRecord PROCEDURE
ReturnValue          BYTE,AUTO
! Start of "Process Method Data Section"
! [Priority 3500]
SkipDetails BYTE
! [Priority 8500]

! End of "Process Method Data Section"
CODE
! Start of "Process Method Executable Code Section"
! [Priority 500]

! Activity for each processed record (PRINT)
! [Priority 1001]
!!
! Parent Call
ReturnValue = PARENT.TakeRecord()
! [Priority 5500]

PRINT(RPT:Detail)
! ProcessManager.TakeRecord (6000) Icetips Previewer, ABC

```

```

If Not ITCSVExport.GetFieldsAdded()
  SetTarget(Report)
  ! Start of "Icetips Previewer: CSV Before INIT"
  ! [Priority 5000]

  ! End of "Icetips Previewer: CSV Before INIT"
ITCSVExport.Init(Report)
  ! Start of "Icetips Previewer: CSV After INIT"
  ! [Priority 5000]
  Loc:PDFFileName = 'C:\temp\test.pdf'
  ! End of "Icetips Previewer: CSV After INIT"
ITCSVExport.AddControl(?CUS:Name, 'Name', '@s60')
ITCSVExport.AddControl(?CUS:FirstName, 'First Name', '@s30')
ITCSVExport.AddControl(?CUS:LastName, 'Last Name', '@s30')
ITCSVExport.AddField(CUS:FirstName, 'First Name', '@s30')
ITCSVExport.AddField(CUS:LastName, 'Last Name', '@s30')
ITCSVExport.AddField(Loc:PDFFileName, 'PDFFileName', '@s255')
ITCSVExport.SetFieldsAdded(True)
  ! Start of "Icetips Previewer: CSV After Registering"
  ! [Priority 5000]

  ! End of "Icetips Previewer: CSV After Registering"
  SetTarget()
End
SetTarget(Report)
! Start of "Icetips Previewer: CSV Before TakeRecord"
! [Priority 5000]

! End of "Icetips Previewer: CSV Before TakeRecord"
ITCSVExport.TakeRecord()
! Start of "Icetips Previewer: CSV After TakeRecord"
! [Priority 5000]

! End of "Icetips Previewer: CSV After TakeRecord"
SetTarget()

! [Priority 8000]

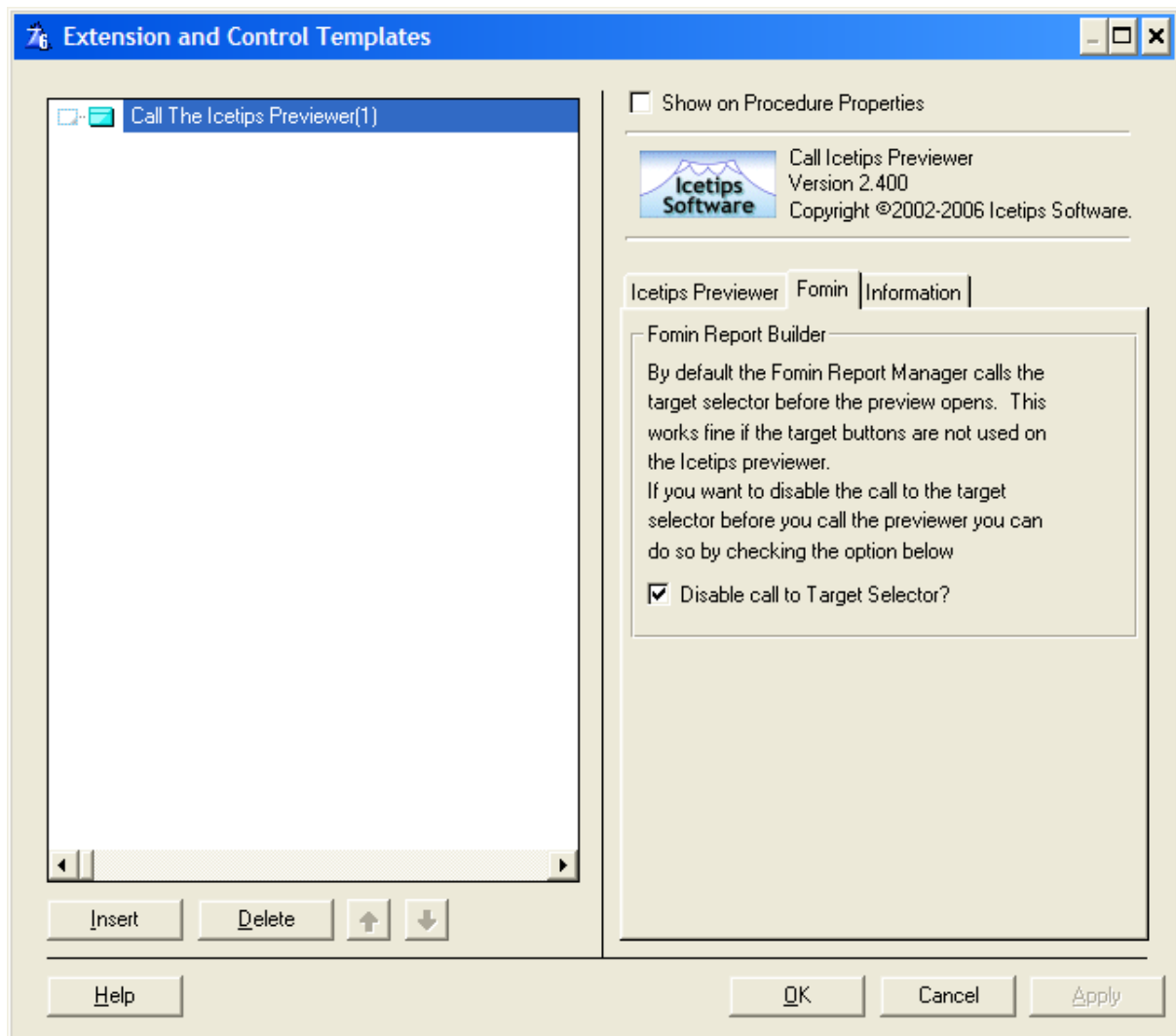
! End of "Process Method Executable Code Section"
RETURN ReturnValue

```

3.4.3 Fomin Report Builder Tab

Call Previewer

The Fomin tab has one option that can be used on Fomin Reports created with the Fomin Report Builder.



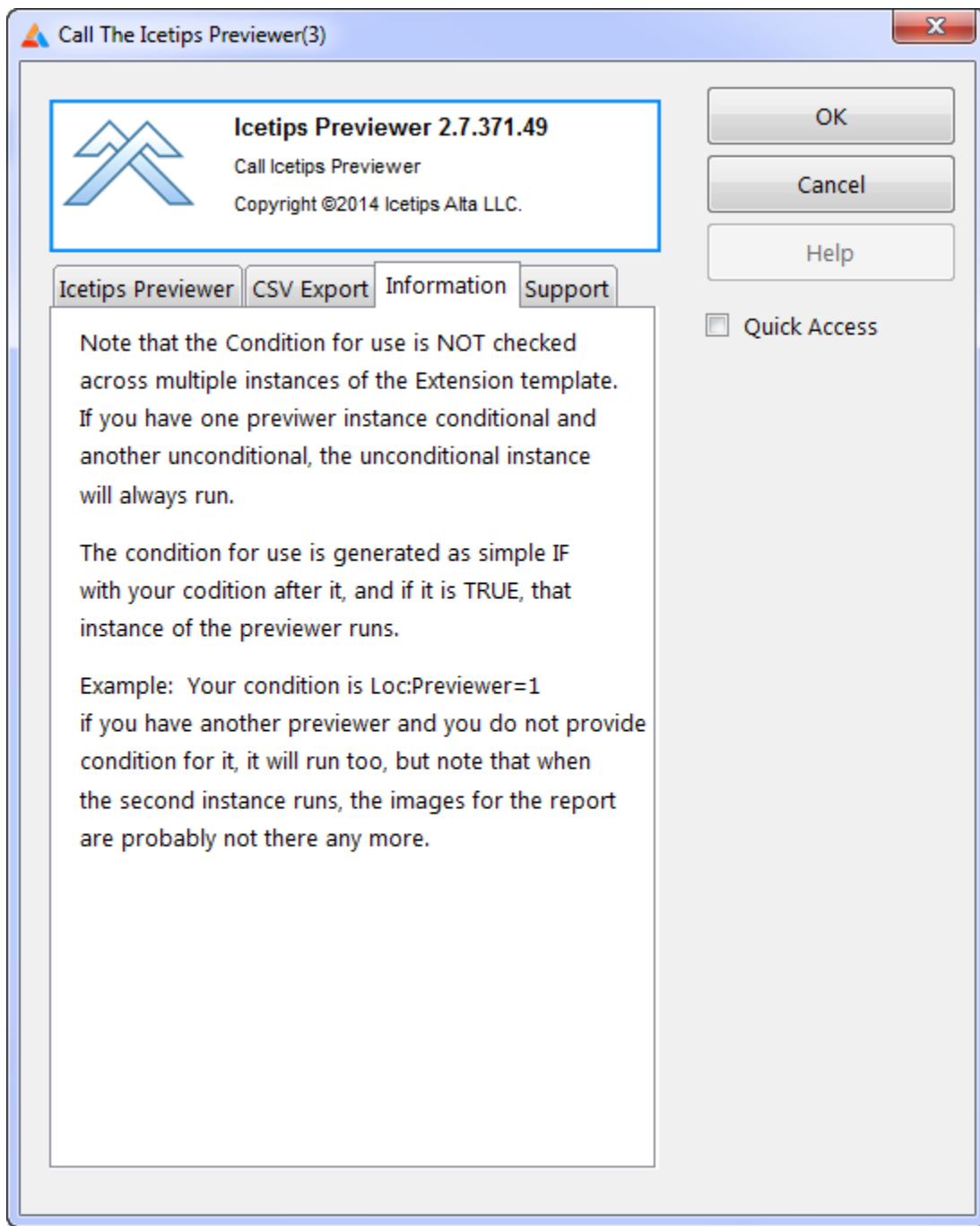
Disable call to Target Selector

By default Fomin calls the target selector before the previewer is opened. This works fine with the Clarion previewer or if you do not have the target [Save As Button](#) or [Save Buttons](#) control templates in the previewer. However if you do have those control templates in the Icetips Previewer you should also have this checkbox checked so the Fomin report will not call the target selector prior to calling the previewer.

3.4.4 Information Tab

Call Previewer

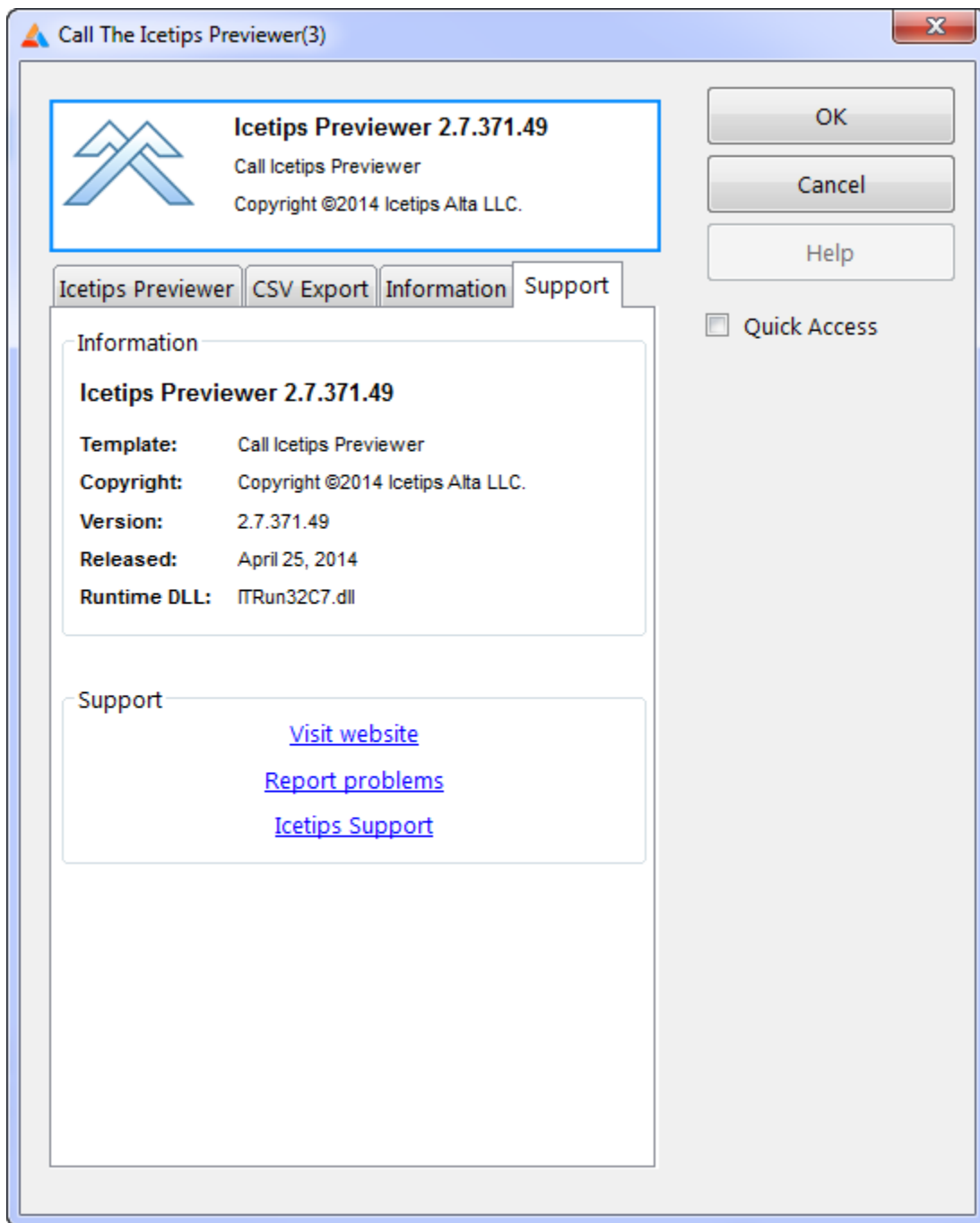
The information tab shows information about how the conditions work. Not much more to say about it.



3.4.5 Support Tab

Call Previewer

The Support Tab shows various information about the product build that you are using.



Information

This shows the version and build information, what template it is, copyright, version and release date. It also shows the Runtime DLL that the template is using. It can be either ITRun32.dll used in Clarion 6.3 and older or ITRun32C7.dll used in Clarion 7 and later. They are both written in C++ and are not in any way dependent on what version of Clarion you are using, except that one works in the old IDE, the other in the new IDE.

Support

This has 3 links. The first one goes to our website at www.icetips.com. The second opens a web

page on icetips.zendesk.com where you can enter your problem or question. The last one opens a page that is installed with the product and gives you quick access to support options, login to our customer portal, etc.

3.5 Mouse Wheel Support

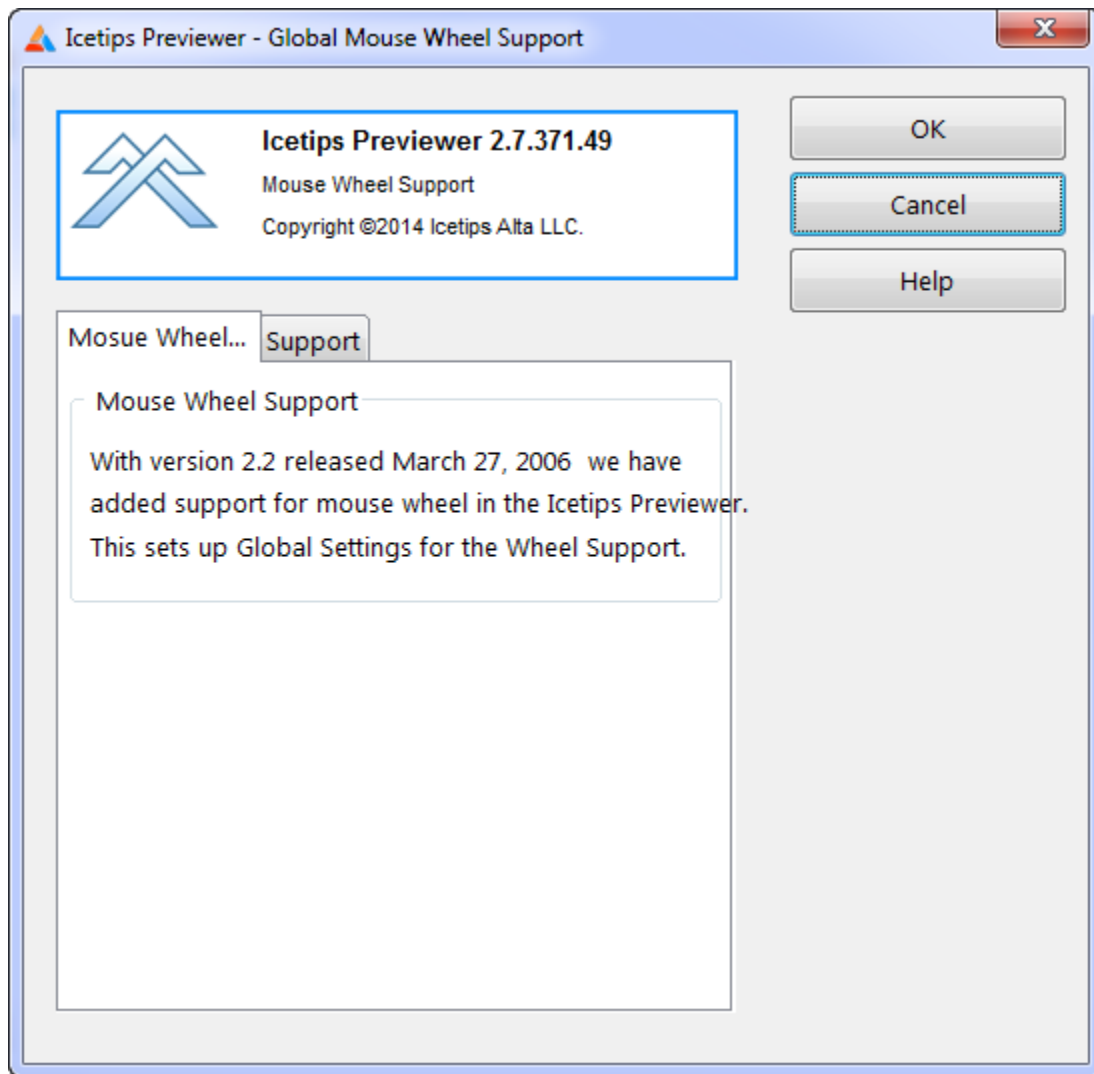
The Mouse Wheel support in the Ictips Previewer is constructed of two templates, one global and one for the Previewer procedure, and two classfiles that are installed into the LibSrc directory called ITPreviewerClass.inc and ITPreviewerClass.clw. Without the Mouse Wheel support the Previewer window will not react when the user scrolls the mouse wheel. When the Mouse Wheel support is active, the Previewer will react like most other programs by scrolling the report.

When you create a Previewer procedure using the [Ictips Previewer Wizard](#), the Mouse Wheel support extension template is added to the Previewer window by default. You can select not to add it in the wizard if you so choose.

3.5.1 Global Extension

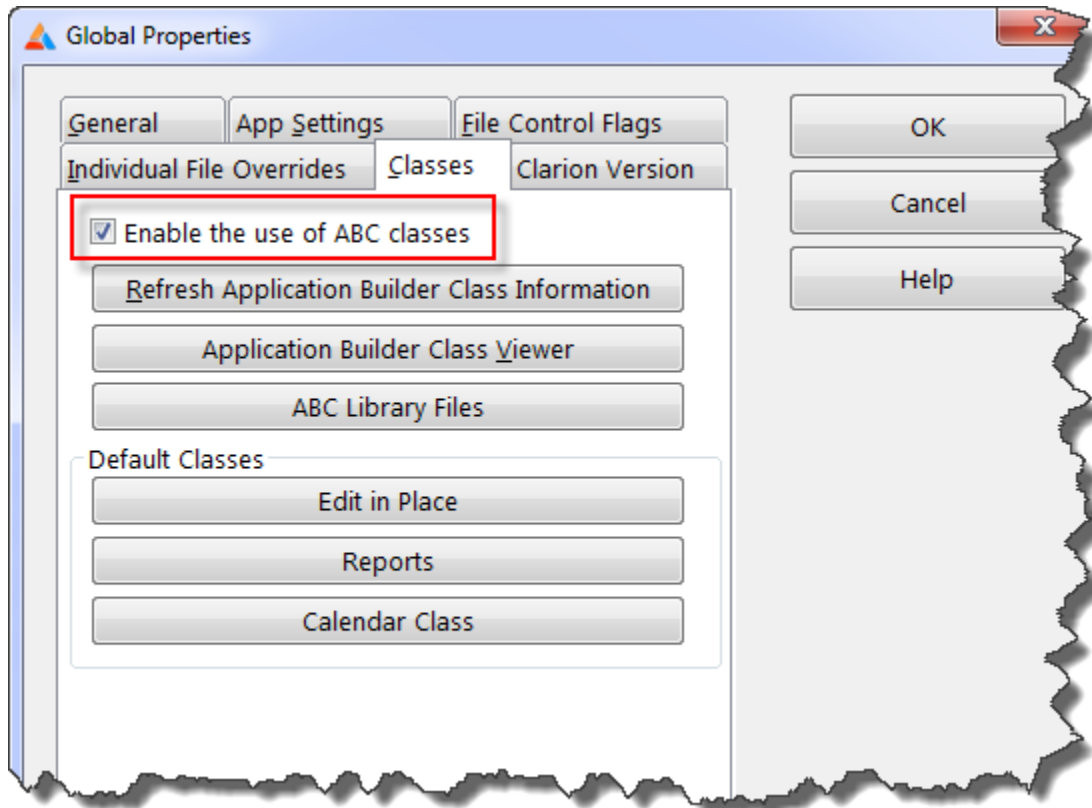
Mouse Wheel Support

This template is required to add support for the Mouse Wheel template for the Previewer procedure.



This template has no prompts. Please note that if you are using Clarion versions prior to 6.0 and you are using the Clarion (legacy) template chain, you should NOT apply this template. We do not support this option in versions prior to Clarion 6.

To use this option in Clarion 6.0 and higher with the Clarion template chain, you must check the "Enable the use of ABC classes"

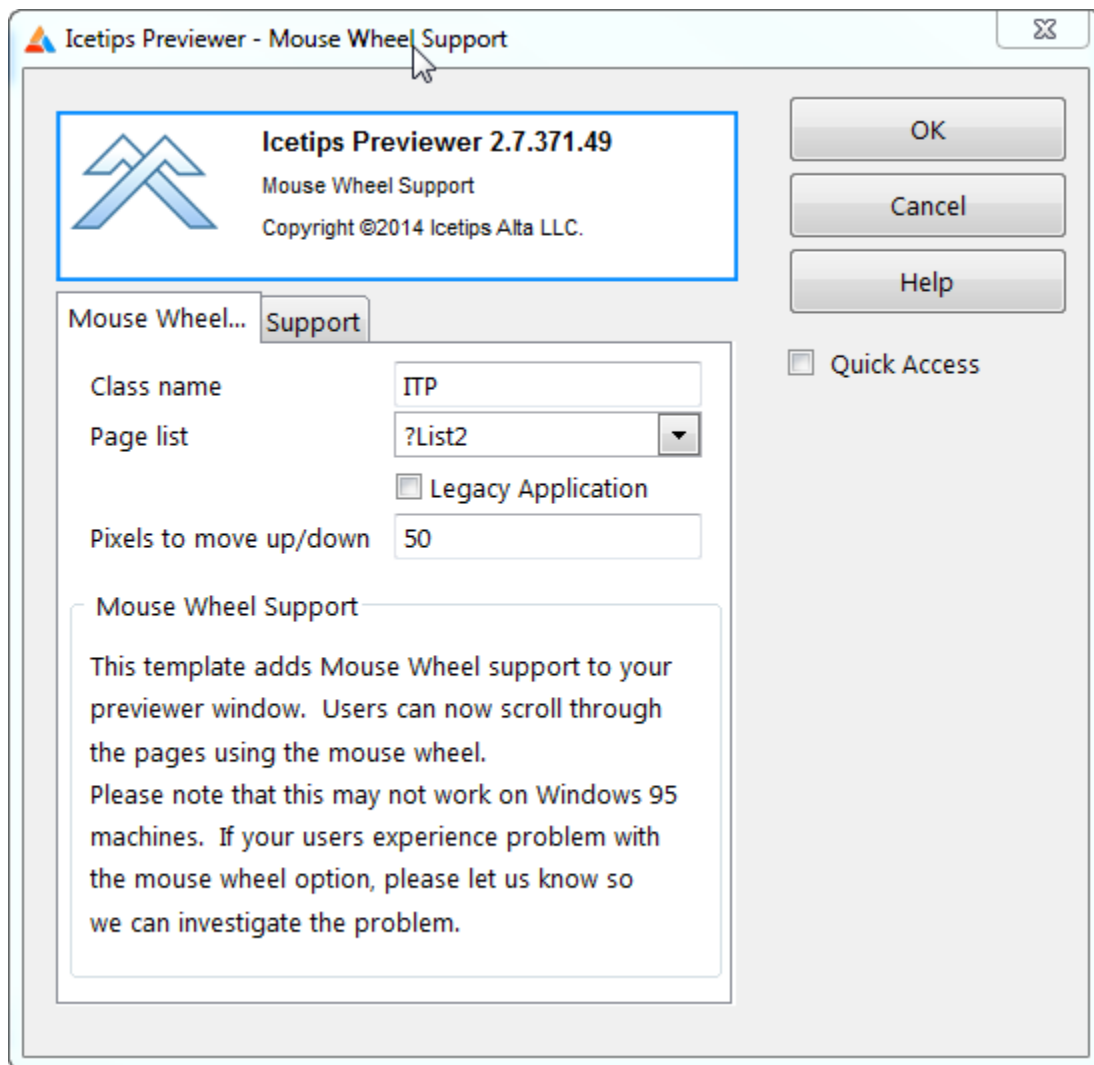


To implement this in your Previewer procedures you must add the [Mouse Wheel support extension](#) to your Previewer procedure(s)

3.5.2 Mouse Wheel Support in Previewer

Mouse Wheel Support

The Mouse Wheel Support adds a Class to your Previewer procedure that subclasses the Previewer window to grab the mouse wheel scrolls before the Clarion window gets to them, and then scroll the pages accordingly. This has been in testing by users since March 2006 and so far we have not had any problems reported.



Class Name

This is the name of the local class that is added to the Previewer procedure. It defaults to ITP. You can use any name you want as long as it obeys the rules about Clarion labels.

Page List

This is the control name of the pagelist. This is required as that control must be subclassed in order to pass the mouse wheel scrolling onward to the window for processing. If you have renamed the page list, then you may need to re-select the pagelist control.

Legacy Application

This is used to determine in what embed points the code for the Icetips Previewer class is generated.

Pixels to move up/down (March 24, 2014)

Sets how many pixels the report will advance up or down with each wheel scroll, i.e. pr. "notch". Default value is 50 pixels. Lower value means less movement, higher value means more movement.

This template requires the [Global Mouse Wheel support](#) template to be added before this template can be added to the Previewer.

3.6 Printer Selection

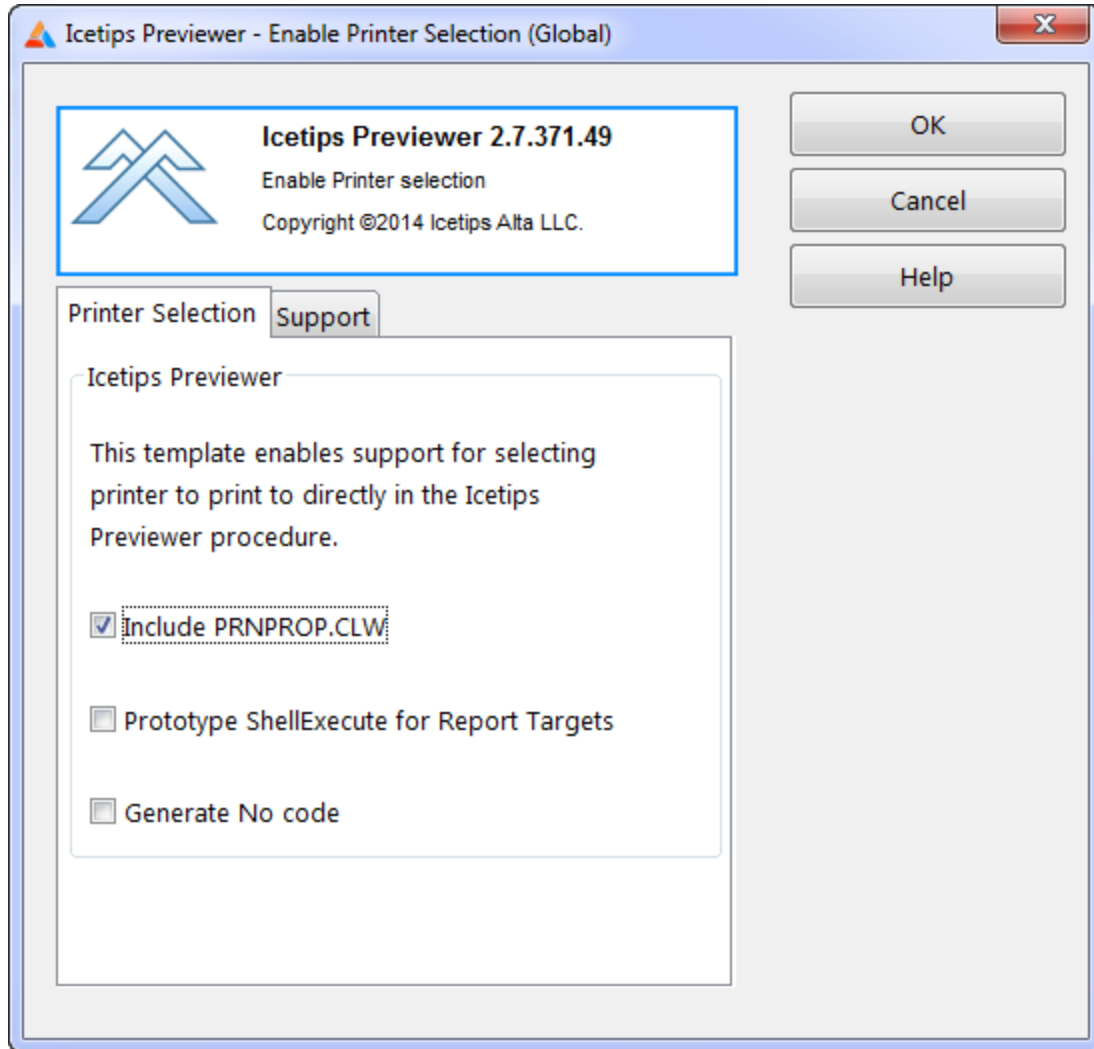
The Printer Selection allows the user to select a printer and print to it without leaving the Previewer. It can also be set up so that the user can select the printer and then it prints the report and closes the previewer.

This option has both a [Global extension](#) and an [extension template](#) that is added to the Previewer procedure(s).

3.6.1 Global Extension

Printer Selection

This template is required in order to be able to use the Printer Selection template on the Icetips Previewer procedure. This template has three options that you can use.



Include PRNPROP.CLW

This option generates an INCLUDE('PRNPROP.CLW') into the "After Global Includes" embed. The PRNPROP.CLW includes equates for PROPPRINT, PAPERBIN, RESOLUTION, DUPLEX and FONTMODE printer/report properties. This file is part of the Clarion install and is located in your Clarion\LibSrc directory. **This option is turned on by default.** Leaving it unchecked may cause compile errors in your Icetips Previewer procedure.

Prototype ShellExecute for Report target classes

This option prototypes the ShellExecute API call so it can be used to open the exported HTML, PDF, TEXT or XML files that are created by the [Report Target templates](#). This option can be used for general use of ShellExecute in your application if you want to. It generates the following lines into the "Inside the Global Map" embed:

```
Module('win32.lib')                                ! Icetips Previewer
  ITPREV_ShellExecute(UNSIGNED,*CSTRING,*CSTRING,*CSTRING,*CSTRING,SIGNED),|
                                     UNSIGNED,PASCAL,RAW,NAME('ShellExecuteA')
End                                                ! Icetips Previewer
```

If you check this option you can use ITPREV_ShellExecute anywhere in your program.

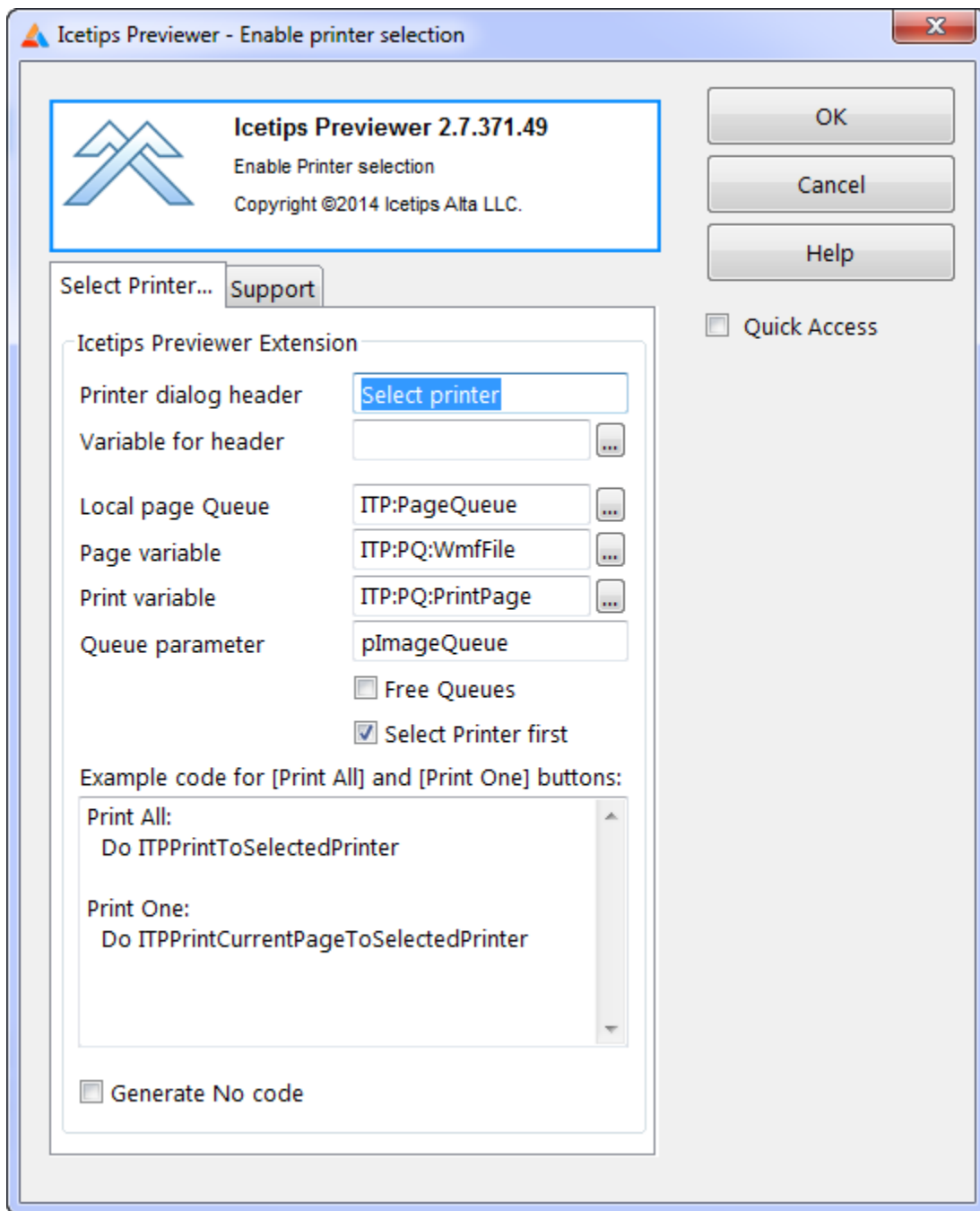
Generate No code

With this option checked, no code will be generated by the global template.

3.6.2 Enable Printer Selection

Printer Selection

This Previewer extension requires that the Enable printer selection (Global) Extension has been added to the application.



Printer dialog header

This is a string constant that is used as the caption of the Printer Dialog that is called to select the printer to print to. If you would rather like to use a variable use the option below "Variable for header" This defaults to "Select printer"

Variable for header

This is a string/cstring variable that is used as the caption of the Printer Dialog that is called to select the printer to print to. If you would rather like to use a constant use the option above "Printer dialog header" This is empty by default.

Local page Queue

This is the label of the local queue that is assigned from the passed image queue (plImageQueue) in the MoveQueueToLocal and MoveQueueFromLocal routines. I.e. this is the queue of pages that is used in the Previewer procedure. This is set to ITP:PageQueue by default.

Page variable

This is the label of the variable in the local page queue that contains the name of the generated .WMF file from the report engine, assigned from the passed queue (plImageQueue). This is set to ITP:PQ:WmfFile by default.

Print variable

This is the label of the variable in the local queue that determines if the page should be printed or not. This is set to either True or False (1 or 0) when pages are tagged for printing. This is set to ITP:PQ:PrintPage by default.

Queue parameter

This is the label of the image queue that is passed to the Ictips Previewer, i.e. the first parameter in the parameter list of the Previewer procedure. This is set to plImageQueue by default.

Free Queues

This determines if the queues (image queues) should be freed after the report has been printed to the selected printer. If this is set to True, both the local and the passed queues are freed when the printing to the selected printer is done. At this point the previewer should close as there is nothing to print. Normally this should be set to False.

With version 2.4 this now defaults to False. In prior versions it was set to default to True, which could cause problems if the developer did not make sure that the previewer window closed.

Select Printer first

This determines if the PrinterDialog is called automatically before printing to the selected printer or if you want to do that manually by using

Do ITPSelectPrinter

Before you call either the ITPPrintCurrentPageToSelectedPrinter or ITPPrintToSelectedPrinter routines. If this is checked, all you need to do is to call those two routines. If it is unchecked you must call the ITPSelectPrinter before in order for the user to actually select the printer! This is set to default to True.

Example code

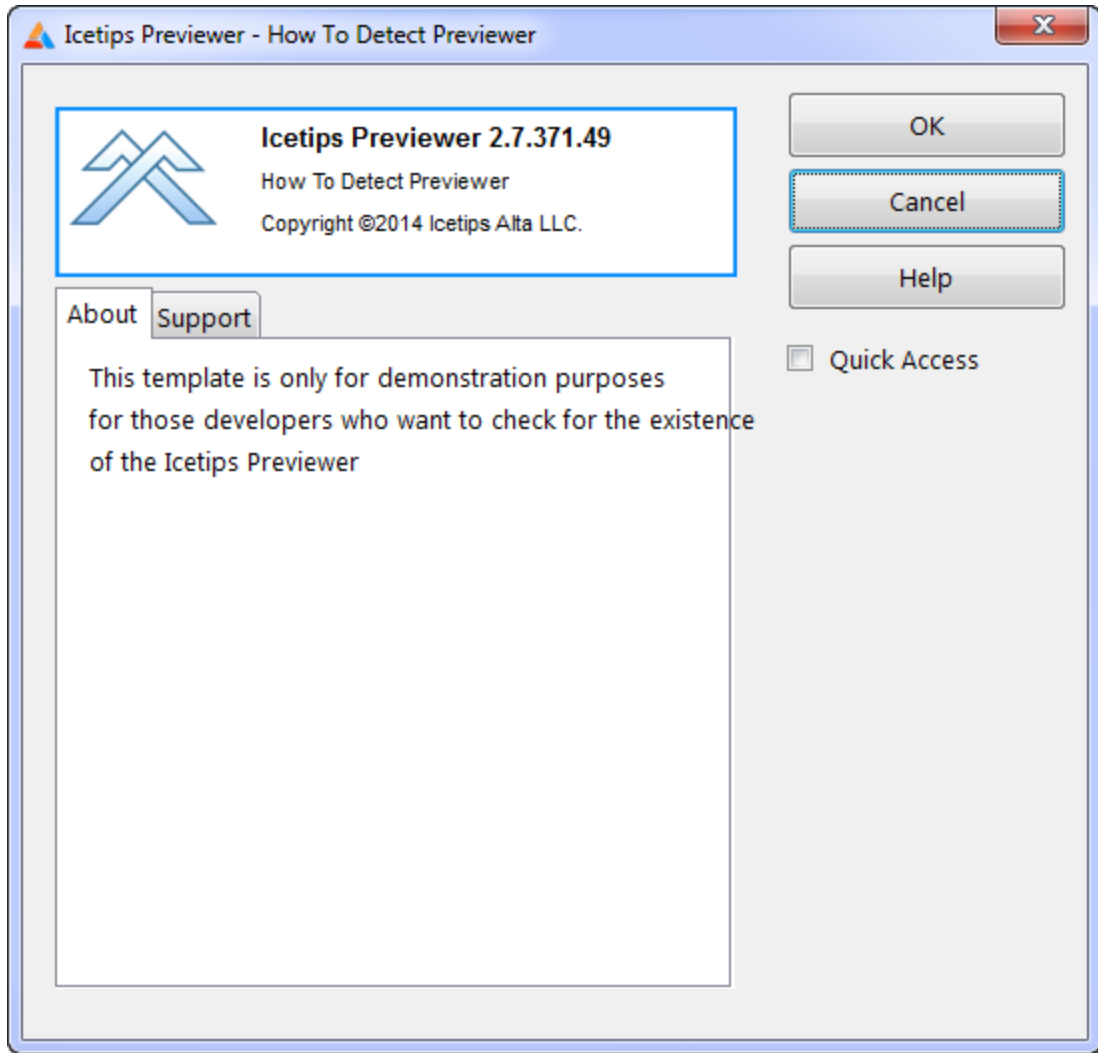
This shows automatically updated code that you can use on the Print All and Print One/Print Current page buttons in the previewer to achieve the desired results. As you check or uncheck the "Free Queues" and "Select printer first" options on the template, you will see the code change. You can then copy/paste this code into the Accepted embeds on the buttons in the previewer.

Generate no code

With this option checked, this templates generates no code into the Previewer procedure.

3.7 How to detect Previewer

This template is for demonstration purposes only and shows how to detect if the Icetips Previewer is being used in a procedure. This is only for template developers who may want to know if the report is using the Icetips Previewer.



If this template is applied it will show an error during generation time telling if the Previewer was detected and which procedure it is in.

Errors

2 Errors 0 Warnings 0 Messages

!	Line	Description	File	Path
✖	1	TPL: (PREVIEWERDEMO.B1\$) Error: Icetips Previewer used in A4ReportLandscape	PREVIEWERDEMO.B1\$	C:\Dev\Prod\Previ...
✖	1	TPL: (PREVIEWERDEMO.B1\$) Error: Icetips Previewer NOT used in ShowVideos	PREVIEWERDEMO.B1\$	C:\Dev\Prod\Previ...

Part



Chapter 4 - Previewer Control Templates

4 Previewer Control Templates

The Icetips Previewer contains several control templates that add certain functionality to the Previewer window. These currently include:

[CPCS Excel/Ascii Export button](#)

[PDF Tools \(2.5\) button](#)

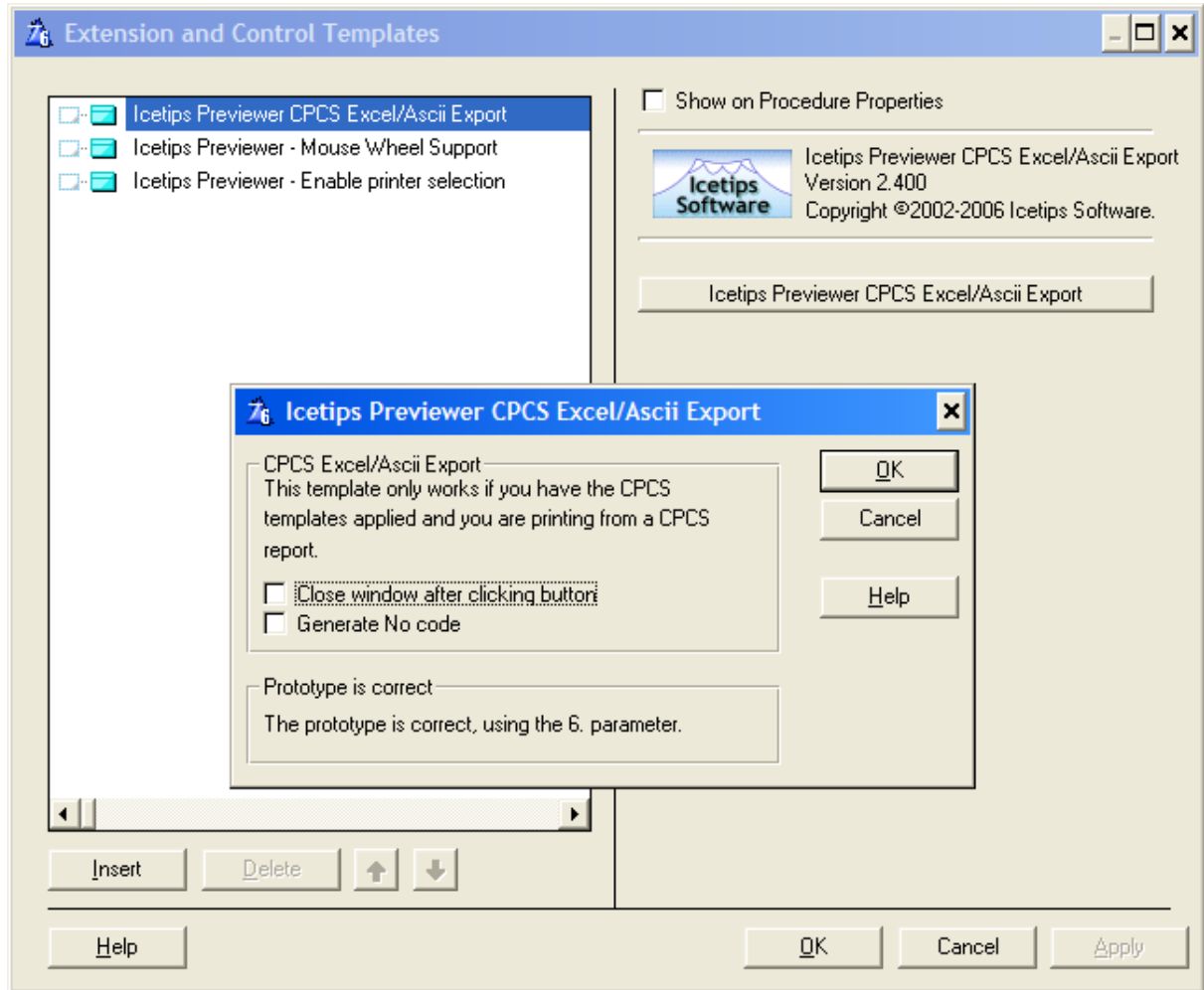
[Save Buttons for SV Report targets](#)

[Save As Button for SV Report targets](#)

Page Of Pages

4.1 CPCS Excel/Ascii Export

This template adds a button to use the [CPCS](#) "Excel/Ascii Formated Output" addon for [CPCS](#) reports. For more information about the [CPCS](#) addon [click here](#). Please scroll to the bottom of this topic for some tips on [implementing](#) this template in your Icetips Previewer.



Close window after clicking button

Use this to close the Previewer window after you click the CPCS Export button. If this is not checked then nothing really happens since the export is actually done in the report, not in the Previewer. Currently this option defaults to false, i.e. unchecked. If you want the Previewer to close once the user presses the Export button, check this option.

Generate No code

When this is checked, this template generates no code at all.

#ImplementationImplementation

To implement this in the Icetips Previewer, you must add a one variable to the parameter list/prototype for the Icetips Previewer procedure:

```
<?* pCPCSExcelAsciiVar>
```

This should go at the end of the parameter list which should then look something like this:

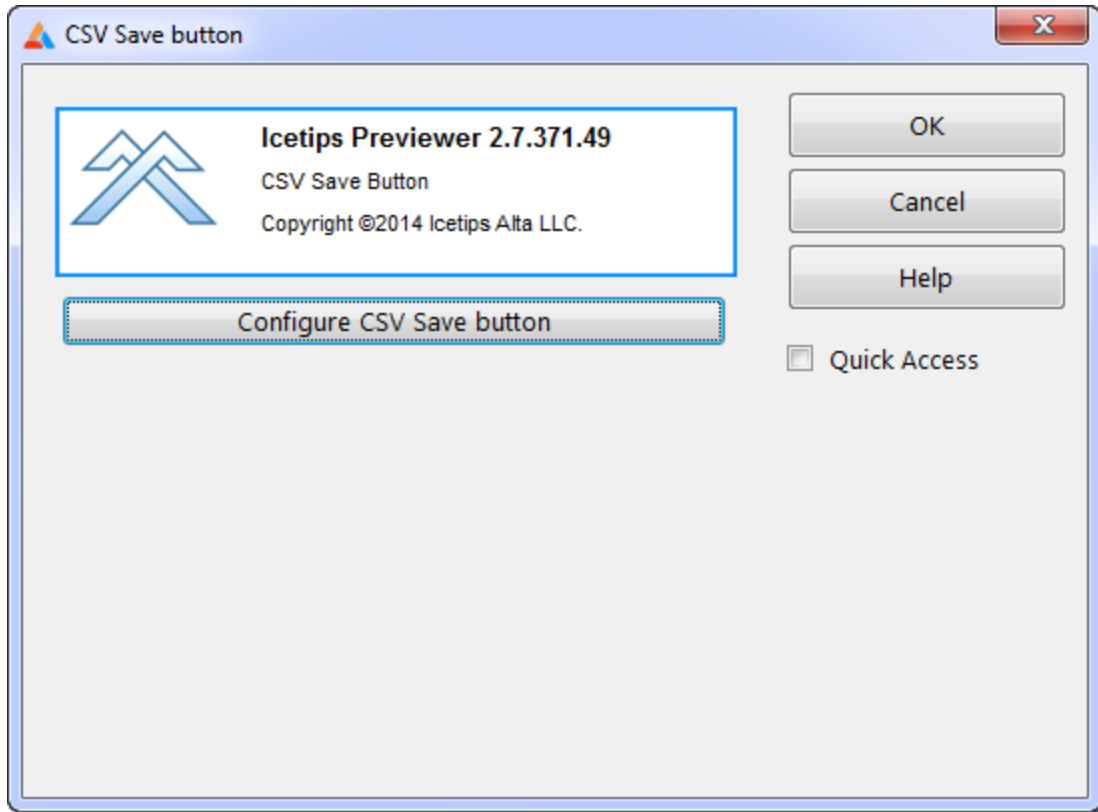
```
(*Queue pImageQueue, Short pZoom, Byte pMaximize, String pWindowCaption, Byte pStartPageList,  
<?*? pCPCSExcelAsciiVar>),Byte
```

If the CPCS report is set up to allow the Excel/Ascii export then the Previewer extension on the report will automatically pick it up and pass it to the previewer. If the CPCS Excel/Ascii button in the previewer is closed, then the report is exported to Excel/Ascii when the previewer closes, i.e. the condition for the export is set in the previewer, but the actual export is done by the report.

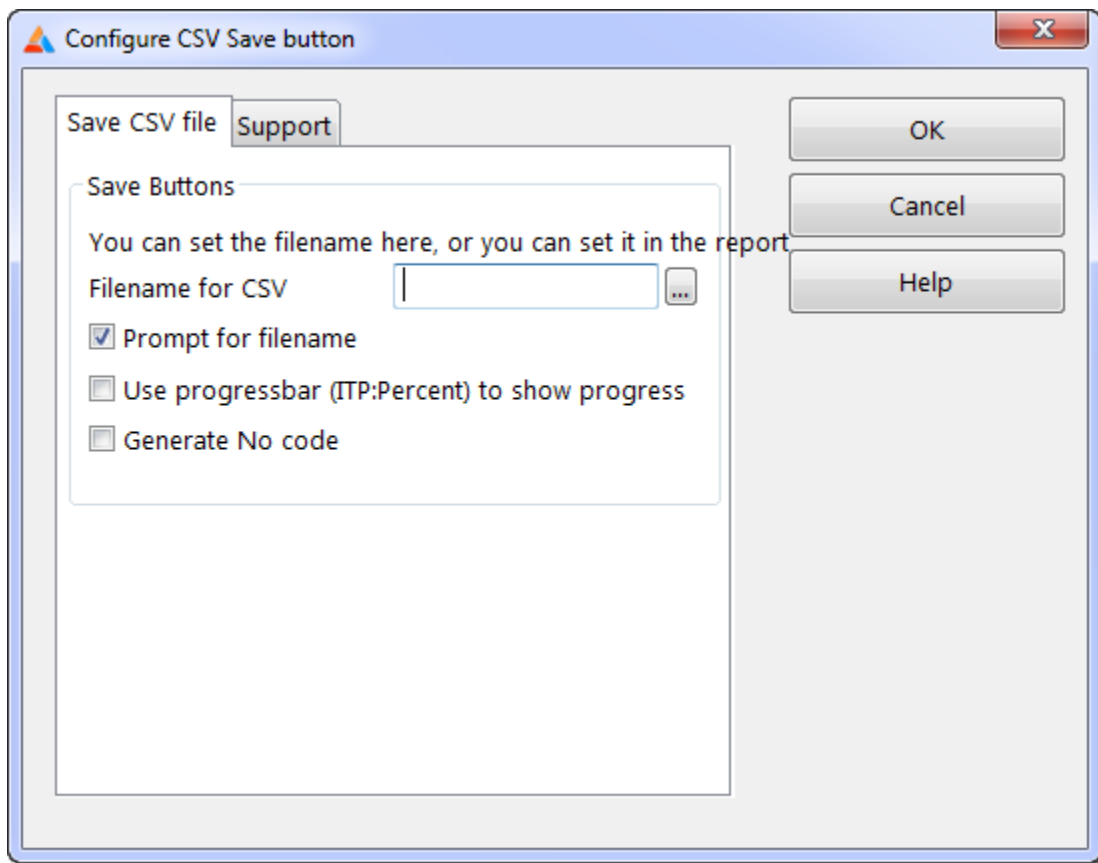
This control template will check and detect if the parameters are correct and warn you if the parameter is missing.

4.2 CSV Save Button

This control template is used together with the "[CSV Export](#)" tab in the "[Call Previewer](#)" extension on the report. This control template goes into the toolbar on the Previewer window and is enabled when there is something to export. The export options are set up on the report, see the [CSV Export](#) section in the [Call Previewer](#) chapter.



Click the **[Configure CSV Save button]** to open the configuration window.

**Filename for CSV**

Name for the resulting CSV. You can use a variable, string constant or any combination. Or you can just leave it blank.

Prompt for filename

When checked this will show the "Save As" file dialog

Use progressbar (ITP:Percent) to show progress

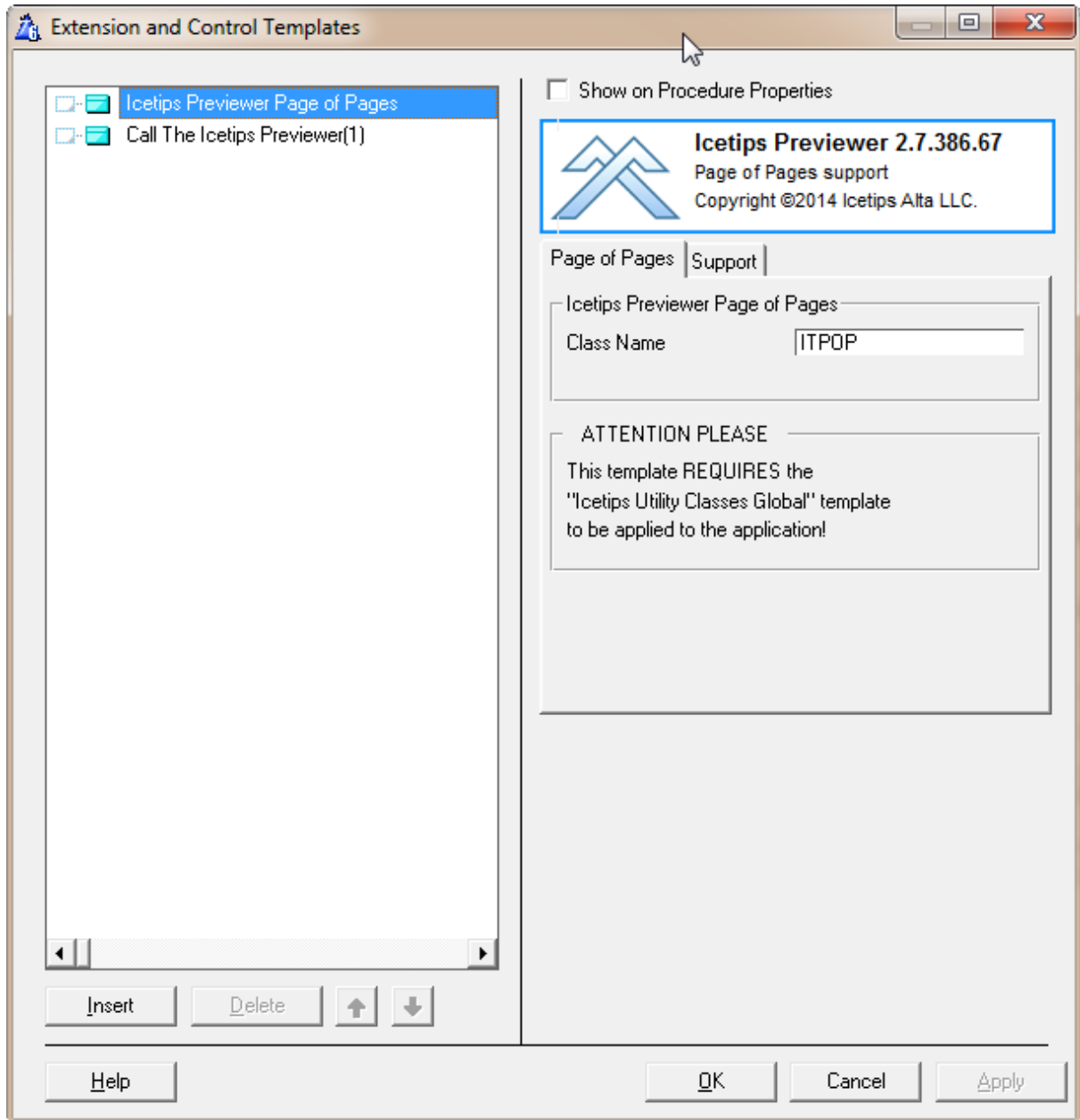
If you check this a small progressbar on the previewer toolbar will show the progress. However, this process is EXTREMELY fast so it's unlikely that the progress bar will ever even have time to draw before it's hidden again! If the report you are adding the export to can get very big (hundreds or thousands of pages) and you are exporting a lot of fields, you should check this, so that the user doesn't think the program has stopped working.

Generate No code

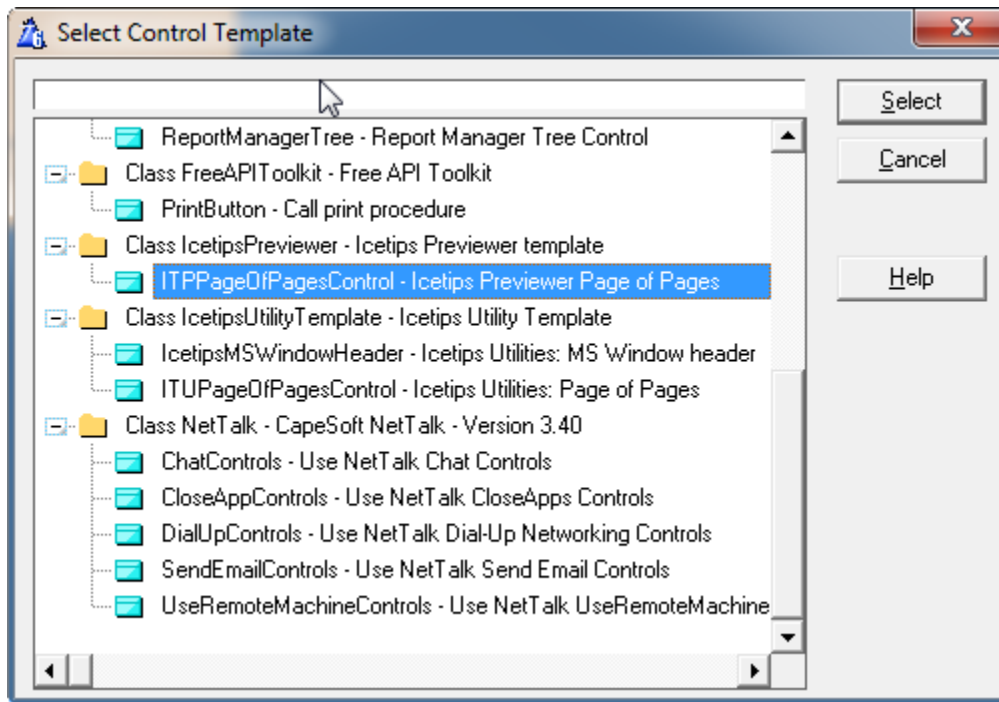
If this is checked, the template will generate no code into the Previewer procedure.

4.3 Page Of Pages

The page of pages template **REQUIRES** that you have the Icetips Utilities installed! Also note that the Icetips Utilities also have a Page of Pages template, but it is **ONLY** compatible with ABC applications. This Page of Page template is compatible with both ABC and Legacy/Clarion template chains.



Using the template is simple. Drop it on the report, add a page number control next to it, line them up and you're done!



If the application you are adding this control to is a Legacy application, **make sure** that you pick the control template from the Icetips Previewer, not the Icetips Utilities, or the process will not work at runtime.

For more information about how this works, please see the Icetips Utilities documentation referenced below.

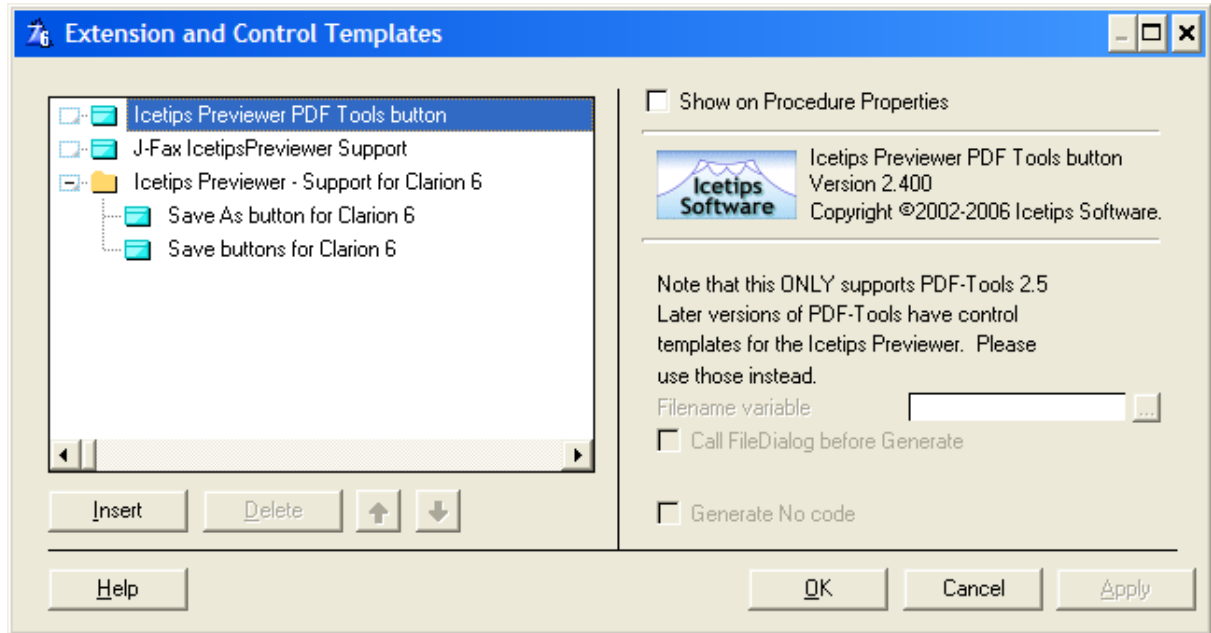
See also:

http://www.icetips.com/manuals/utilities/page_of_pages_template.htm

http://www.icetips.com/manuals/utilities/pageofpage_overview.htm

4.4 PDF Tools

The Icetips Previewer comes with a control template that we added for PDF Tools version 2.5. The producer of PDF Tools has since taken over support for the control template and it is included in the [PDF Tools SDK product](#).



Filename variable

This is the label of a variable that is used in the call to PDF Tools' .INIT method in the ExportPDFTools25 routine.

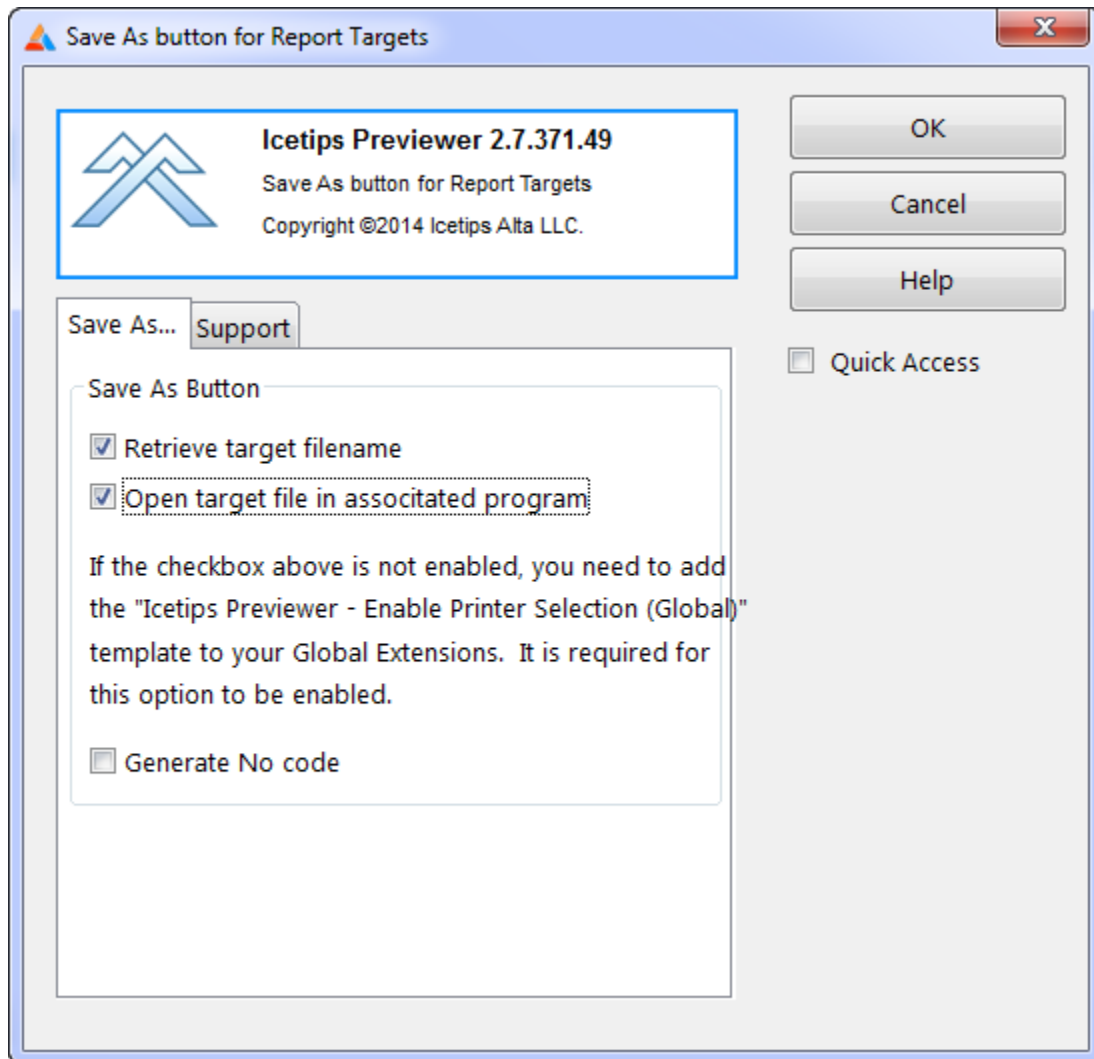
Call FileDialog before Generate

If this is checked, a call to FileDialog prompts the user to select a PDF file to export to. If this is not checked, the value of the variable in "Filename variable" is used. Note that the FileDialog uses the variable from "Filename variable"

For any further information we direct you to the PDF Tools SDK documentation.

4.5 Save As Button

This control template populates 1 buttons into the Previewer toolbar. When the Previewer procedure is passed a ReportTargetSelector it automatically detects what target options are available. When this button is pressed it calls the Target selector window and then the report is exported. This option is also used by the [J-Fax Icetips Previewer](#) support.



The prompts for this template are exactly the same as for the [Save Buttons](#).

Retrieve target filename

This option enables the Previewer to retrieve the generated target filename. For PDF, TXT and XML this is the name of the file being saved. For HTML this is the name of the first page filename. This makes it possible to open the resulting file(s) when the export is done. This is set to False by default.

Open target file in associate program

This requires that the [Global Printer Selection](#) extension has been added to the Global Extensions and it has the **Prototype ShellExecute for C6 target classes** checked. It also requires that the Retrieve target filename is checked. When checked this will automatically use ShellExecute to open the

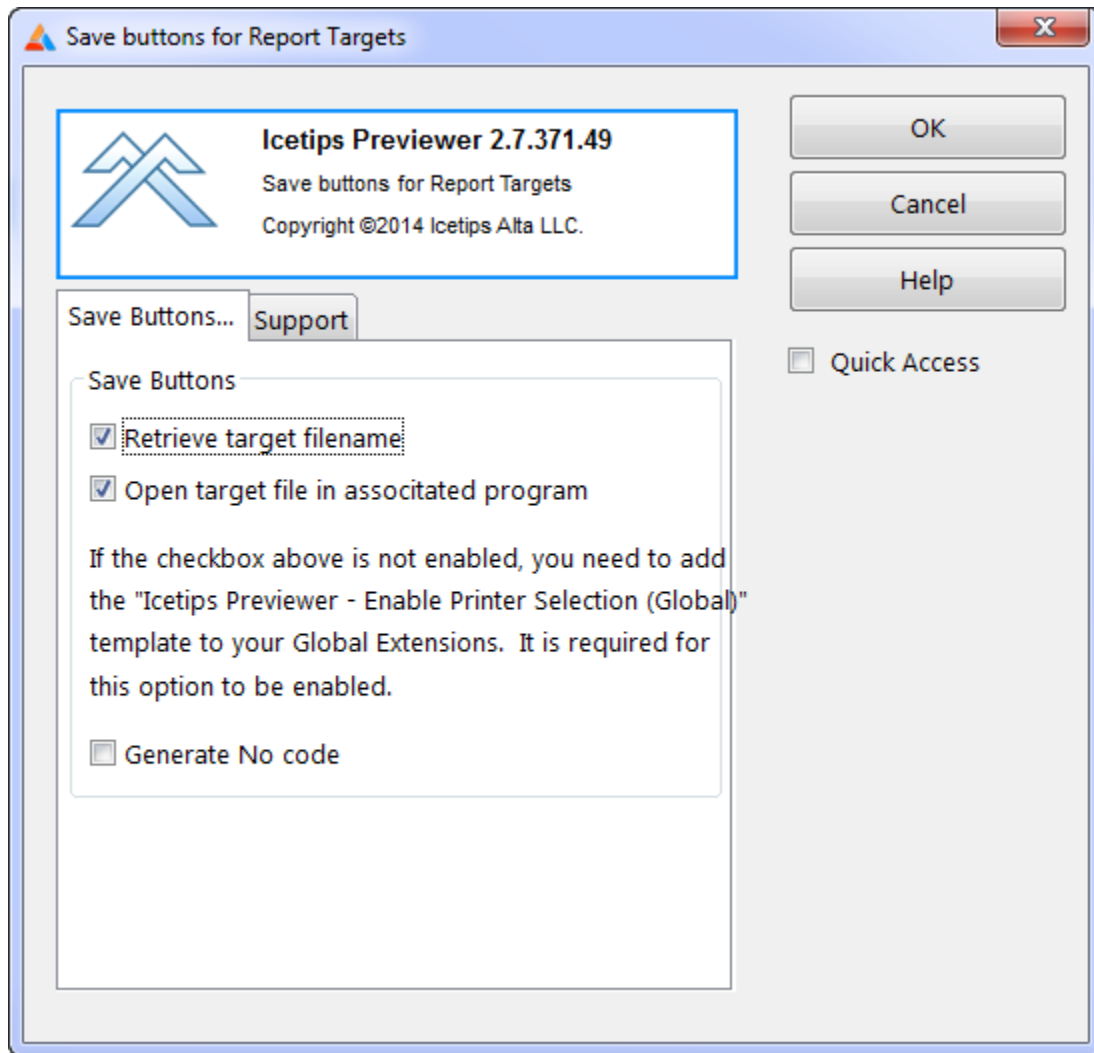
exported file, be it PDF, TEXE, XML or HTML, in it's associated program for viewing. This is set to false by default.

Generate No code

If this is checked then this template generates no code. This is set to false by default.

4.6 Save Buttons

This control template populates 7 hidden buttons in a group into the Previewer toolbar. When the Previewer procedure is passed a ReportTargetSelector it automatically detects what target options are available and enables the buttons as appropriate. This option is also used by the [J-Fax Ictips Previewer](#) support.



Retrieve target filename

This option enables the Previewer to retrieve the generated target filename. For PDF, TEXT and XML this is the name of the file being saved. For HTML this is the name of the first page filename. This makes it possible to open the resulting file(s) when the export is done. This is set to False by default.

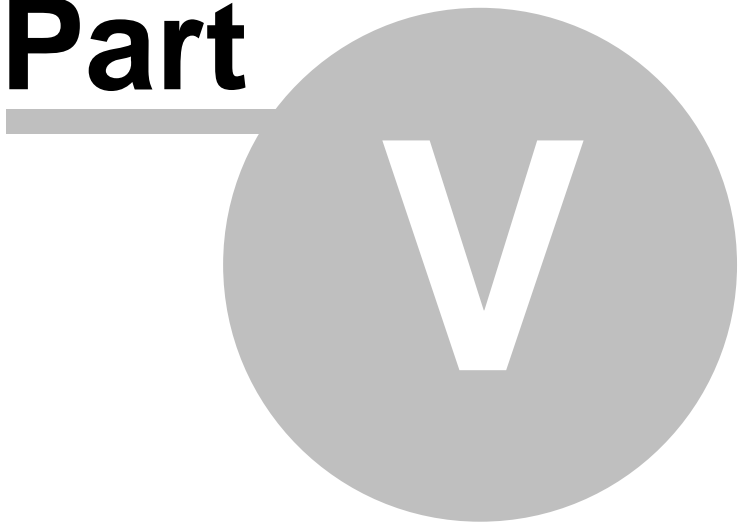
Open target file in associate program

This requires that the [Global Printer Selection](#) extension has been added to the Global Extensions and it has the **Prototype ShellExecute for Report Targets** checked. It also requires that the Retrieve target filename is checked. When checked this will automatically use ShellExecute to open the exported file, be it PDF, TXT, XML or HTML, in it's associated program for viewing. This is set to false by default.

Generate No code

If this is checked then this template generates no code. This is set to false by default.

Part



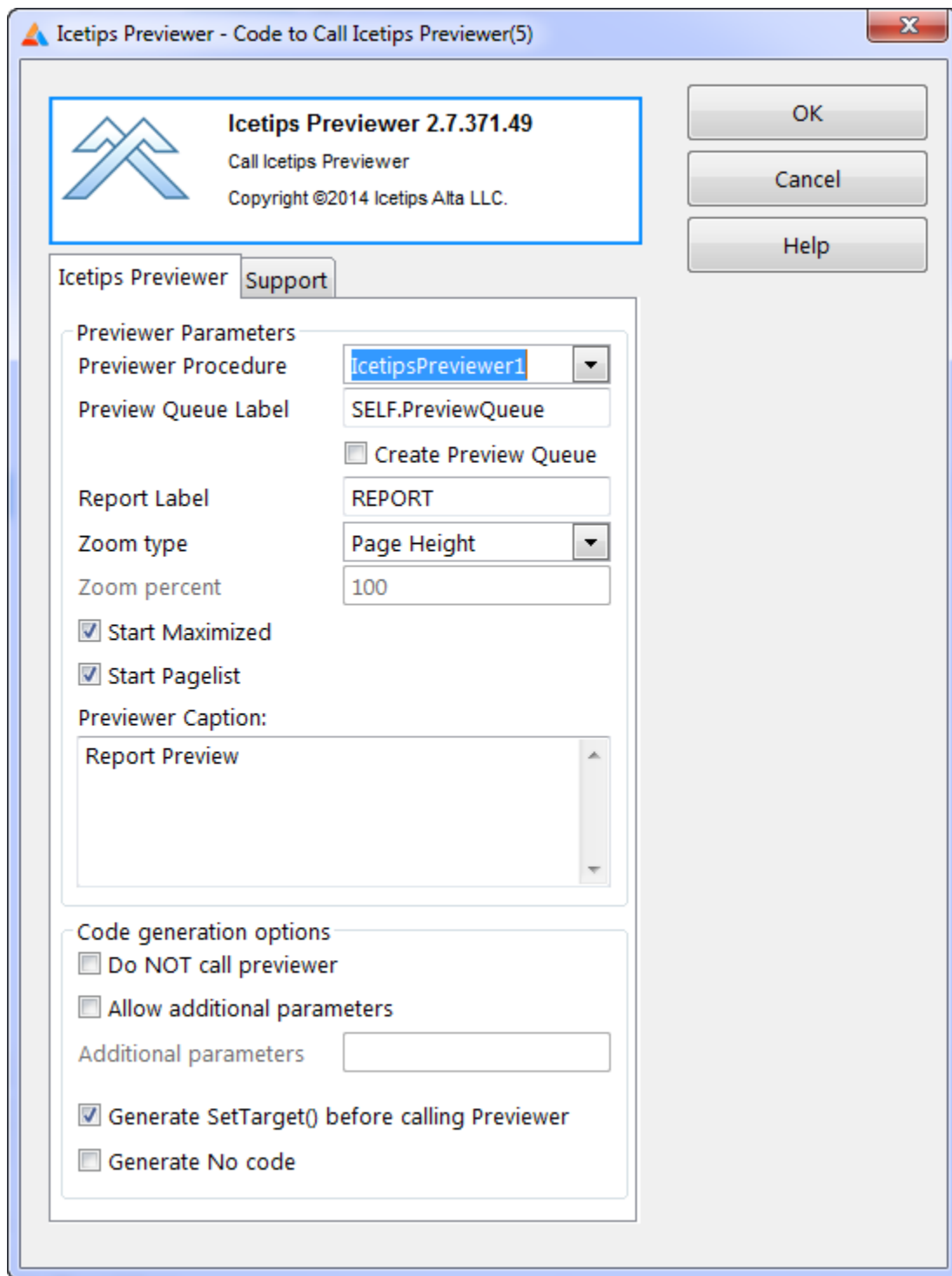
Chapter 5 - Previewer Code Templates

5 Previewer Code Templates

This template can be used to generate code to call the Icetips Previewer from any place and any kind of procedure - or to simply generate the code so you can copy it to a completely hand coded project. This has most of the same options as the extension template, but not all.

5.1 Call Previewer

This is used to generate code to call the Icetips Previewer from any place in any kind of procedure. This works much the same way as the [Call Previewer](#) extension template, but it does not have the condition but has an additional prompt for the report label.



Previewer Procedure

Here you can select the previewer procedure that you want to use. You can have multiple Previewer procedures in the same application with different look or different functionality.

Report Label

This is the label of the report structure. If the procedure has a report structure, i.e. created inside the

[Report] button, then the label of that report structure will be used and it will override the contents of the entry. This makes it easy to add the Ictips Previewer to a report that is declared inside a window procedure for example. On Source only procedures, the window and report buttons on the procedure properties window are disabled by the Clarion IDE. The label is set to REPORT by default.

Zoom type

This dropdown has 4 options: "Page Height", "Page Width", "Full (100%)" and "Value". This is used to specify the initial zoom for the report when the previewer displays it. If Value is selected, then the "Zoom percent" is enabled and you can type in what zoom percent value you want to use as initial zoom. This is set to "Page Height" by default.

Zoom percent

This is enabled when a zoom type of "Value" is selected above. Here you can set what zoom percent you want as default. This is set to 100 by default. Note that if this is not set, i.e. the entry is empty, then the zoom is set to 0. Special values for the zoom are:

-2 = Page Height
-1 = Page Width
0 = 100%
Any other value, zoom percent

Start Maximized

This indicates if the Previewer window should start maximized. Note that if the Previewer procedure saves/restores window position then this setting is overridden by whatever the saved state of the window was. I.e. if this is set to true and the Previewer was last closed non-maximized, then the window will start non maximized. This is set to True by default.

Start Pagelist

This indicates if the pagelist on the left of the Previewer window should be opened when the Previewer window is opened. This is set to True by default.

Previewer Caption

This is the caption of the previewer window when it opens. This is set to "Report Preview" by default.

Do NOT call previewer

If this option is used, all code to call the previewer is generated but is commented out. This can be useful if you want to construct the code by hand in the embed editor and use the generated code as a guide. This is set to false by default.

Allow additional parameters

This option enables the "Additional parameters" field, see below. Then you can add parameters to the parameterlist that is being passed to the Previewer. The list can start with a comma, but it is not required - the template will add it if it's missing. For example if you wanted to add a parameter you could do it like this:

```
,Loc:MyVariable
```

Note that some additional extensions and options may add parameters to the built-in list so you have to be careful to make sure that the parameters being passed from the report match the prototype/parameterlist of the previewer procedure.

Additional parameters

See above.

Generate SetTarget(Report) before calling Previewer

This is required if you want to have a reference to the report when you enter the Previewer procedure. This makes it possible for the previewer to retrieve information from the reports, such as landscape,

job name, etc. which are vital if you are going to use the [Printer Selection](#) extension in the Previewer. **If this is not checked, your reports may not print correctly when printed from the Previewer. Make sure that you understand the implication of unchecking this option if you are using the [Printer Selection](#) template!** This is set to True by default.

Generate No code

This allows you to stop generation of all the code that this template generates into the report procedure. See also [Apply to application](#) for more information about how to disable code generation. This is set to False by default.

In an ABC application the above settings would generate something like:

```
SetTarget(REPORT)
If ITPreviewer(SELF.PreviewQueue, -2, 1, 'Report Preview', 1)
    REPORT{PROP:FlushPreview} = True
End
SetTarget()
```

In a Legacy application it would look like:

```
SetTarget(REPORT)
If ITPreviewer(PrintPreviewQueue, -2, 1, 'Report Preview', 1)
    REPORT{PROP:FlushPreview} = True
End
SetTarget()
```

If the procedure has a REPORT structure, then the label of the actual report structure will be used.

Part



Chapter 6 - Misc

6 Misc

6.1 License Agreement

Icetips "Preveiw" End-User License Agreement

Important - read carefully!

By installing this software you have agreed to be bound by the following End-User Licence Agreement.

ICETIPS ALTA LLC ("ICETIPS") IS WILLING TO LICENSE THE SOFTWARE ONLY UPON THE CONDITION THAT YOU ACCEPT ALL OF THE TERMS CONTAINED IN THIS SOFTWARE LICENSE AGREEMENT. PLEASE READ THE TERMS CAREFULLY. BY CLICKING ON "YES, ACCEPT" OR BY INSTALLING THE SOFTWARE, YOU WILL INDICATE YOUR AGREEMENT WITH THEM. IF YOU ARE ENTERING INTO THIS AGREEMENT ON BEHALF OF A COMPANY OR OTHER LEGAL ENTITY, YOUR ACCEPTANCE REPRESENTS THAT YOU HAVE THE AUTHORITY TO BIND SUCH ENTITY TO THESE TERMS, IN WHICH CASE "YOU" OR "YOUR" SHALL REFER TO YOUR ENTITY. IF YOU DO NOT AGREE WITH THESE TERMS, OR IF YOU DO NOT HAVE THE AUTHORITY TO BIND YOUR ENTITY, THEN ICETIPS IS UNWILLING TO LICENSE THE SOFTWARE, AND YOU SHOULD SELECT THE "NO, DECLINE" BUTTON AND THE DOWNLOAD OR INSTALL WILL NOT CONTINUE.

SOFTWARE LICENSE AGREEMENT

1. Parties. The parties to this Agreement are you, the licensee ("You") and Icetips. If You are not acting on behalf of Yourself as an individual, then "You" means Your company or organization.

2. The Software. The Software licensed under this Agreement consists of computer programs only in compiled, object code form, data compilation(s), source code and documentation referred to as Icetips subscription product (the "Software").

3. Subscription Term For Registered User Version. The term of the license granted herein for the registered version of the Software shall be on a subscription basis with an initial term of one (1) year, and optional recurring renewal terms of one (1) year each, unless prior to renewal this license is terminated by written notice by You for convenience or terminated by either party for material breach. Renewal procedures are described in the accompanying documentation, and unless such procedures are strictly satisfied, including the payment of any required license fee, Your updates to the Software is not authorized, but use of Your existing Software is authorized. No updates or upgrades to the Software can be authorized unless the license fee is paid.

4. Registered Version License Grant for Single Copies (Non-Network Use). If You are a registered

user of the Software, You are granted non-exclusive rights to install and use the Software by a single person who uses the Software only on one or more computers or workstations. You may copy the Software for archival purposes, provided that any copy must contain the original Software's proprietary notices in unaltered form.

5. Registered Version License Grant For Network Use. If You are a registered user of the Software, You are granted non-exclusive rights to install and use the Software and/or transmit the Software over an internal computer network, provided You acquire and dedicate a licensed copy of the Software for each user who may access the Software concurrently with any other user. You may copy the Software for archival purposes, provided that any copy must contain the original Software's proprietary notices in unaltered form.

6. Restrictions. You may not: (i) permit others to use the Software, except as expressly provided above for authorized network use; (ii) modify or translate the Software; (iii) reverse engineer, decompile, or disassemble the Software, except to the extent this restriction is expressly prohibited by applicable law; (iv) create derivative works based on the Software; (v) merge the Software with another product; (vi) copy the Software, except as expressly provided above; or (vii) remove or obscure any proprietary rights notices or labels on the Software.

7. Purchase of Additional Licenses. Registered users of the Software may purchase license rights for additional authorized use of the Software in accordance with Icetips' then-current volume pricing schedule. Such additional licenses shall be governed by the terms and conditions hereof. You agree that, absent Icetips' express written acceptance thereof, the terms and conditions contained in any purchase order or other document issued by You to Icetips for the purchase of additional licenses, shall not be binding on Icetips to the extent that such terms and conditions are additional to or inconsistent with those contained in this Agreement.

8. Transfers. You may make a one-time permanent transfer of all of your license rights to the Software to another party, provided that all of the following conditions are satisfied: (a) you notify us in writing of your intent to transfer your license rights and identify the party receiving the Software with complete contact information; (b) the transfer must include all of the Software, including all its component parts, original media, printed materials and this License Agreement; (c) you do not retain any copies of any version of the Software, full or partial, including copies stored on a computer or other storage device; and (d) the party receiving the Software reads and agrees to accept the terms and conditions of this License Agreement. Notwithstanding the foregoing, we reserve the right to require the transfer of possession of all physical copies of the Software to us for purposes of re-issue of replacement copies to the party receiving the Software.

9. Ownership. Icetips and its suppliers own the Software, all physical copies thereof, and all intellectual property rights embodied therein, including copyrights and valuable trade secrets embodied in the Software's design and coding methodology. The Software is protected by United

States copyright laws and international treaty provisions. This Agreement provides You only a limited use license, and no ownership of any intellectual property. We reserve the right to require you to transfer possession of all physical copies of the Software to us for purposes of re-issue of replacement copies.

10. Warranty Disclaimer; Limitation of Liability. ICETIPS PROVIDES THE SOFTWARE "AS-IS" AND PROVIDED WITH ALL FAULTS. NEITHER ICETIPS NOR ANY OF ITS SUPPLIERS OR RESELLERS MAKES ANY WARRANTY OF ANY KIND, EXPRESS OR IMPLIED. ICETIPS AND ITS SUPPLIERS SPECIFICALLY DISCLAIM THE IMPLIED WARRANTIES OF TITLE, NON-INFRINGEMENT, MERCHANTABILITY, FITNESS FOR A PARTICULAR PURPOSE, SYSTEM INTEGRATION, AND DATA ACCURACY. THERE IS NO WARRANTY OR GUARANTEE THAT THE OPERATION OF THE SOFTWARE WILL BE UNINTERRUPTED, ERROR-FREE, OR VIRUS-FREE, OR THAT THE SOFTWARE WILL MEET ANY PARTICULAR CRITERIA OF PERFORMANCE, QUALITY, ACCURACY, PURPOSE, OR NEED. YOU ASSUME THE ENTIRE RISK OF SELECTION, INSTALLATION, AND USE OF THE SOFTWARE. THIS DISCLAIMER OF WARRANTY CONSTITUTES AN ESSENTIAL PART OF THIS AGREEMENT. NO USE OF THE SOFTWARE IS AUTHORIZED HEREUNDER EXCEPT UNDER THIS DISCLAIMER.

11. Local Law. If implied warranties may not be disclaimed under applicable law, then ANY IMPLIED WARRANTIES ARE LIMITED IN DURATION TO THE PERIOD REQUIRED BY APPLICABLE LAW. Some jurisdictions do not allow limitations on how long an implied warranty may last, so the above limitations may not apply to You. This warranty gives you specific rights, and You may have other rights which vary from jurisdiction to jurisdiction.

12. Limitation of Liability. INDEPENDENT OF THE FORGOING PROVISIONS, IN NO EVENT AND UNDER NO LEGAL THEORY, INCLUDING WITHOUT LIMITATION, TORT, CONTRACT, OR STRICT PRODUCTS LIABILITY, SHALL ICETIPS OR ANY OF ITS SUPPLIERS BE LIABLE TO YOU OR ANY OTHER PERSON FOR ANY INDIRECT, SPECIAL, INCIDENTAL, OR CONSEQUENTIAL DAMAGES OF ANY KIND, INCLUDING WITHOUT LIMITATION, DAMAGES FOR LOSS OF GOODWILL, WORK STOPPAGE, COMPUTER MALFUNCTION, OR ANY OTHER KIND OF COMMERCIAL DAMAGE, EVEN IF ICETIPS HAS BEEN ADVISED OF THE POSSIBILITY OF SUCH DAMAGES. THIS LIMITATION SHALL NOT APPLY TO LIABILITY FOR DEATH OR PERSONAL INJURY TO THE EXTENT PROHIBITED BY APPLICABLE LAW. IN NO EVENT SHALL ICETIPS'S LIABILITY FOR DAMAGES FOR ANY CAUSE WHATSOEVER, AND REGARDLESS OF THE FORM OF ACTION, EXCEED IN THE AGGREGATE THE AMOUNT OF THE PURCHASE PRICE PAID FOR THE SOFTWARE LICENSE.

13. Export Controls. You agree to comply with all export laws and restrictions and regulations of the United States or foreign agencies or authorities, and not to export or re-export the Software or any direct product thereof in violation of any such restrictions, laws or regulations, or without all necessary approvals. As applicable, each party shall obtain and bear all expenses relating to any necessary licenses and/or exemptions with respect to its own export of the Software from the U.S.

Neither the Software nor the underlying information or technology may be electronically transmitted or otherwise exported or re-exported (i) into Cuba, Iran, Iraq, Libya, North Korea, Sudan, Syria or any other country subject to U.S. trade sanctions covering the Software, to individuals or entities controlled by such countries, or to nationals or residents of such countries other than nationals who are lawfully admitted permanent residents of countries not subject to such sanctions; or (ii) to anyone on the U.S. Treasury Department's list of Specially Designated Nationals and Blocked Persons or the U.S. Commerce Department's Table of Denial Orders. By downloading or using the Software, Licensee agrees to the foregoing and represents and warrants that it complies with these conditions.

14. U.S. Government End-Users. The Software is a "commercial item," as that term is defined in 48 C.F.R. 2.101 (Oct. 1995), consisting of "commercial computer software" and "commercial computer software documentation," as such terms are used in 48 C.F.R. 12.212 (Sept. 1995). Consistent with 48 C.F.R. 12.212 and 48 C.F.R. 227.7202-1 through 227.7202-4 (June 1995), all U.S. Government End Users acquire the Software with only those rights as are granted to all other end users pursuant to the terms and conditions herein. Unpublished rights are reserved under the copyright laws of the United States.

15. Licensee Outside The U.S. If You are located outside the U.S., then the following provisions shall apply: (i) Les parties aux presentes confirment leur volonte que cette convention de meme que tous les documents y compris tout avis qui s'y rattache, soient rediges en langue anglaise (translation: "The parties confirm that this Agreement and all related documentation is and will be in the English language."); and (ii) You are responsible for complying with any local laws in your jurisdiction which might impact your right to import, export or use the Software, and You represent that You have complied with any regulations or registration procedures required by applicable law to make this license enforceable.

16. Severability. If any provision of this Agreement is declared invalid or unenforceable, such provision shall be deemed modified to the extent necessary and possible to render it valid and enforceable. In any event, the unenforceability or invalidity of any provision shall not affect any other provision of this Agreement, and this Agreement shall continue in full force and effect, and be construed and enforced, as if such provision had not been included, or had been modified as above provided, as the case may be.

17. Arbitration. Except for actions to protect intellectual property rights and to enforce an arbitrator's decision hereunder, all disputes, controversies, or claims arising out of or relating to this Agreement or a breach thereof shall be submitted to and finally resolved by arbitration under the rules of the American Arbitration Association ("AAA") then in effect. There shall be one arbitrator, and such arbitrator shall be chosen by mutual agreement of the parties in accordance with AAA rules. The arbitration shall take place in Port Angeles, Washington, USA, and may be conducted by

telephone or online. The arbitrator shall apply the laws of the State of Washington, USA to all issues in dispute. The controversy or claim shall be arbitrated on an individual basis, and shall not be consolidated in any arbitration with any claim or controversy of any other party. The findings of the arbitrator shall be final and binding on the parties, and may be entered in any court of competent jurisdiction for enforcement. Enforcements of any award or judgment shall be governed by the United Nations Convention on the Recognition and Enforcement of Foreign Arbitral Awards. Should either party file an action contrary to this provision, the other party may recover attorney's fees and costs up to \$1000.00.

18. Jurisdiction And Venue. The courts of Clallam County in the State of Washington, USA and the nearest U.S. District Court shall be the exclusive jurisdiction and venue for all legal proceedings that are not arbitrated under this Agreement.

19. Force Majeure. Neither party shall be liable for damages for any delay or failure of delivery arising out of causes beyond their reasonable control and without their fault or negligence, including, but not limited to, Acts of God, acts of civil or military authority, fires, riots, wars, embargoes, Internet disruptions, hacker attacks, or communications failures. Notwithstanding anything to the contrary contained herein, if either party is unable to perform hereunder for a period of thirty (30) consecutive days, then the other party may terminate this Agreement immediately without liability by ten (10) days written notice to the other.

20. Miscellaneous. This Agreement constitutes the entire understanding of the parties with respect to the subject matter of this Agreement and merges all prior communications, representations, and agreements. This Agreement may be modified only by a written agreement signed by the parties. If any provision of this Agreement is held to be unenforceable for any reason, such provision shall be reformed only to the extent necessary to make it enforceable. This Agreement shall be construed under the laws of the State of Washington, USA, excluding rules regarding conflicts of law. The application the United Nations Convention of Contracts for the International Sale of Goods is expressly excluded. The parties agree that the Uniform Computer Transactions Act or any version thereof, adopted by any state, in any form ("UCITA"), shall not apply to this Agreement, and to the extent that UCITA may be applicable, the parties agree to opt out of the applicability of UCITA pursuant to the opt-out provision(s) contained therein.

Icetips Alta LLC
3430 East Highway 101, Ste. #28
Port Angeles WA 98362
EEmail: support@icetips.com
<http://www.icetips.com>

6.2 Limitations

We are not aware of any limitations at this time.

6.3 Contact us

Upgrades

The latest upgrades can be downloaded from www.icetips.com Note that you must have a valid Gold Subscription login to download.

Bug reports and suggestions

If you want to contact us, please send us emails to support@icetips.com

If your app is a multi-dll app, please try to recompile all your apps before reporting possible bugs.

When reporting bugs, please let us know your version of Clarion and Previewer, and if possible, provide a screen shot. An example app or steps to reproduce in the demo app is highly appreciated.

Please report bugs to our support system <https://icetips.zendesk.com/hc/en-us/requests/new> Make sure that you select the correct product (Icetips previewer) and provide information about what version of the product and Clarion you are using. Please give us good, detailed description of what the problem is. You can attach files to your bug reports.

Other Clarion Products

You'll find more of our Clarion products at www.icetips.com

6.4 Installed Files

Below is a list of files installed with the Icetips Previewer. Please note that the file size may NOT be exactly match what you have on your drive.

Install Files			
ID	File	Destination Folder / Source Folder	Size (bytes)
00001	c6_vista_fix.exe	%PROGRAMFILES%\Icetips Creative\Clarion6Fix C:\Products	149,864
00002	itpScript.itc	%CLA_UTILS%\Icetips C:\Products\ITPreviewer\Latest\3rdParty\Tools\ITInstall	334
00003	itutil.exe	%CLA_UTILS%\Icetips C:\Products\ITPreviewer\Latest\3rdParty\Tools\ITInstall	1,340,312
00004	ABCDemo.app	%CLA_EXAMPLES%\ITPrev C:\Products\ITPreviewer\Latest\3rdParty\Examples\ITPrev	282,112
00005	abcTRW.app	%CLA_EXAMPLES%\ITPrev C:\Products\ITPreviewer\Latest\3rdParty\Examples\ITPrev	466,176
00006	C6Demo.app	%CLA_EXAMPLES%\ITPrev C:\Products\ITPreviewer\Latest\3rdParty\Examples\ITPrev	151,040
00007	C6DemoPDF.app	%CLA_EXAMPLES%\ITPrev C:\Products\ITPreviewer\Latest\3rdParty\Examples\ITPrev	184,064
00008	customers.tps	%CLA_EXAMPLES%\ITPrev C:\Products\ITPreviewer\Latest\3rdParty\Examples\ITPrev	298,240
00009	FINGER.CUR	%CLA_EXAMPLES%\ITPrev C:\Products\ITPreviewer\Latest\3rdParty\Examples\ITPrev	338
00010	ITPC6Demo.dct	%CLA_EXAMPLES%\ITPrev C:\Products\ITPreviewer\Latest\3rdParty\Examples\ITPrev	2,816
00011	ITPDemo.app	%CLA_EXAMPLES%\ITPrev C:\Products\ITPreviewer\Latest\3rdParty\Examples\ITPrev	276,480
00012	ITPDemo.dct	%CLA_EXAMPLES%\ITPrev C:\Products\ITPreviewer\Latest\3rdParty\Examples\ITPrev	2,048
00013	itwiz.gif	%CLA_EXAMPLES%\ITPrev C:\Products\ITPreviewer\Latest\3rdParty\Examples\ITPrev	20,454
00014	Peace.bmp	%CLA_EXAMPLES%\ITPrev C:\Products\ITPreviewer\Latest\3rdParty\Examples\ITPrev	1,440,054

00015	people.SCN	%CLA_EXAMPLES%\ITPrev C:\Products\ITPreviewer\Latest\3rdParty\Examples\ITPrev	672
00016	people.tps	%CLA_EXAMPLES%\ITPrev C:\Products\ITPreviewer\Latest\3rdParty\Examples\ITPrev	1,792
00017	pointer.cur	%CLA_EXAMPLES%\ITPrev C:\Products\ITPreviewer\Latest\3rdParty\Examples\ITPrev	326
00018	PREVIEW.TXR	%CLA_EXAMPLES%\ITPrev C:\Products\ITPreviewer\Latest\3rdParty\Examples\ITPrev	1,779
00019	PreviewerDemo.app	%CLA_EXAMPLES%\ITPrev C:\Products\ITPreviewer\Latest\3rdParty\Examples\ITPrev	376,576
00020	PreviewerDemo.exe. manifest	%CLA_EXAMPLES%\ITPrev C:\Products\ITPreviewer\Latest\3rdParty\Examples\ITPrev	686
00021	Winequ.clw	%CLA_EXAMPLES%\ITPrev C:\Products\ITPreviewer\Latest\3rdParty\Examples\ITPrev	4,467
00022	ITPrev.hlp	%CLA_BIN% C:\Products\ITPreviewer\Latest\CSIDL_PROGRAMFILES_COMMON\Ic etips Creative\Clarion\Bin	413,841
00023	CPCSCSV.ico	%CLA_IMAGES% C:\Products\ITPreviewer\Latest\3rdParty\Images	2,238
00024	Demo Splash - Green.bmp	%CLA_IMAGES% C:\Products\ITPreviewer\Latest\3rdParty\Images	565,016
00025	EXP_CSV.ico	%CLA_IMAGES% C:\Products\ITPreviewer\Latest\3rdParty\Images	2,238
00026	EXP_DOTM.ico	%CLA_IMAGES% C:\Products\ITPreviewer\Latest\3rdParty\Images	2,238
00027	EXP_FAX.ICO	%CLA_IMAGES% C:\Products\ITPreviewer\Latest\3rdParty\Images	2,238
00028	EXP_FAXsm.ico	%CLA_IMAGES% C:\Products\ITPreviewer\Latest\3rdParty\Images	3,262
00029	EXP_HTM.ico	%CLA_IMAGES% C:\Products\ITPreviewer\Latest\3rdParty\Images	5,494
00030	EXP_HTMsm.ico	%CLA_IMAGES% C:\Products\ITPreviewer\Latest\3rdParty\Images	3,262
00031	EXP_PDF.ico	%CLA_IMAGES% C:\Products\ITPreviewer\Latest\3rdParty\Images	2,238

00032	EXP_PDFsm.ico	%CLA_IMAGES% C:\Products\ITPreviewer\Latest\3rdParty\Images	3,262
00033	EXP_PRI.ico	%CLA_IMAGES% C:\Products\ITPreviewer\Latest\3rdParty\Images	2,238
00034	EXP_RTF.ico	%CLA_IMAGES% C:\Products\ITPreviewer\Latest\3rdParty\Images	2,238
00035	EXP_TXT.ico	%CLA_IMAGES% C:\Products\ITPreviewer\Latest\3rdParty\Images	2,238
00036	EXP_TXTsm.ico	%CLA_IMAGES% C:\Products\ITPreviewer\Latest\3rdParty\Images	3,262
00037	EXP_XLS.ico	%CLA_IMAGES% C:\Products\ITPreviewer\Latest\3rdParty\Images	2,238
00038	EXP_XML.ico	%CLA_IMAGES% C:\Products\ITPreviewer\Latest\3rdParty\Images	2,238
00039	EXP_XMLsm.ico	%CLA_IMAGES% C:\Products\ITPreviewer\Latest\3rdParty\Images	3,262
00040	ITfirst.ico	%CLA_IMAGES% C:\Products\ITPreviewer\Latest\3rdParty\Images	2,238
00041	ITfirstb.ico	%CLA_IMAGES% C:\Products\ITPreviewer\Latest\3rdParty\Images	2,238
00042	ITfirstg.ico	%CLA_IMAGES% C:\Products\ITPreviewer\Latest\3rdParty\Images	2,238
00043	ITfirsto.ico	%CLA_IMAGES% C:\Products\ITPreviewer\Latest\3rdParty\Images	2,238
00044	ITfirstr.ico	%CLA_IMAGES% C:\Products\ITPreviewer\Latest\3rdParty\Images	2,238
00045	ITfirsty.ico	%CLA_IMAGES% C:\Products\ITPreviewer\Latest\3rdParty\Images	2,238
00046	ITlast.ico	%CLA_IMAGES% C:\Products\ITPreviewer\Latest\3rdParty\Images	2,238
00047	ITlastb.ico	%CLA_IMAGES% C:\Products\ITPreviewer\Latest\3rdParty\Images	2,238
00048	ITlastg.ico	%CLA_IMAGES% C:\Products\ITPreviewer\Latest\3rdParty\Images	2,238

00049	ITlasto.ico	%CLA_IMAGES% C:\Products\ITPreviewer\Latest\3rdParty\Images	2,238
00050	ITlastr.ico	%CLA_IMAGES% C:\Products\ITPreviewer\Latest\3rdParty\Images	2,238
00051	ITlasty.ico	%CLA_IMAGES% C:\Products\ITPreviewer\Latest\3rdParty\Images	2,238
00052	ITLogo.gif	%CLA_IMAGES% C:\Products\ITPreviewer\Latest\3rdParty\Images	2,847
00053	ITmark.ico	%CLA_IMAGES% C:\Products\ITPreviewer\Latest\3rdParty\Images	2,998
00054	ITnextpage.ico	%CLA_IMAGES% C:\Products\ITPreviewer\Latest\3rdParty\Images	2,238
00055	ITnextpageb.ico	%CLA_IMAGES% C:\Products\ITPreviewer\Latest\3rdParty\Images	2,238
00056	ITnextpageg.ico	%CLA_IMAGES% C:\Products\ITPreviewer\Latest\3rdParty\Images	2,238
00057	ITnextpageo.ico	%CLA_IMAGES% C:\Products\ITPreviewer\Latest\3rdParty\Images	2,238
00058	ITnextpager.ico	%CLA_IMAGES% C:\Products\ITPreviewer\Latest\3rdParty\Images	2,238
00059	ITnextpagey.ico	%CLA_IMAGES% C:\Products\ITPreviewer\Latest\3rdParty\Images	2,238
00060	ITnoprintb.ico	%CLA_IMAGES% C:\Products\ITPreviewer\Latest\3rdParty\Images	2,238
00061	ITnoprintg.ico	%CLA_IMAGES% C:\Products\ITPreviewer\Latest\3rdParty\Images	2,238
00062	ITnoprinto.ico	%CLA_IMAGES% C:\Products\ITPreviewer\Latest\3rdParty\Images	2,238
00063	ITnoprintr.ico	%CLA_IMAGES% C:\Products\ITPreviewer\Latest\3rdParty\Images	2,238
00064	ITnoprinty.ico	%CLA_IMAGES% C:\Products\ITPreviewer\Latest\3rdParty\Images	2,238
00065	ITpageb.ico	%CLA_IMAGES% C:\Products\ITPreviewer\Latest\3rdParty\Images	2,238

00066	ITpagedrop.ico	%CLA_IMAGES% C:\Products\ITPreviewer\Latest\3rdParty\Images	2,238
00067	ITpagedropb.ico	%CLA_IMAGES% C:\Products\ITPreviewer\Latest\3rdParty\Images	2,238
00068	ITpagedropg.ico	%CLA_IMAGES% C:\Products\ITPreviewer\Latest\3rdParty\Images	2,238
00069	ITpagedropo.ico	%CLA_IMAGES% C:\Products\ITPreviewer\Latest\3rdParty\Images	2,238
00070	ITpagedropr.ico	%CLA_IMAGES% C:\Products\ITPreviewer\Latest\3rdParty\Images	2,238
00071	ITpagedropy.ico	%CLA_IMAGES% C:\Products\ITPreviewer\Latest\3rdParty\Images	2,238
00072	ITpagefull.ico	%CLA_IMAGES% C:\Products\ITPreviewer\Latest\3rdParty\Images	2,238
00073	ITpagefullb.ico	%CLA_IMAGES% C:\Products\ITPreviewer\Latest\3rdParty\Images	2,238
00074	ITpagefullg.ico	%CLA_IMAGES% C:\Products\ITPreviewer\Latest\3rdParty\Images	2,238
00075	ITpagefullo.ico	%CLA_IMAGES% C:\Products\ITPreviewer\Latest\3rdParty\Images	2,238
00076	ITpagefullr.ico	%CLA_IMAGES% C:\Products\ITPreviewer\Latest\3rdParty\Images	2,238
00077	ITpagefully.ico	%CLA_IMAGES% C:\Products\ITPreviewer\Latest\3rdParty\Images	2,238
00078	ITpageg.ico	%CLA_IMAGES% C:\Products\ITPreviewer\Latest\3rdParty\Images	2,238
00079	ITpageh.ico	%CLA_IMAGES% C:\Products\ITPreviewer\Latest\3rdParty\Images	2,238
00080	ITpagehb.ico	%CLA_IMAGES% C:\Products\ITPreviewer\Latest\3rdParty\Images	2,238
00081	ITpagehg.ico	%CLA_IMAGES% C:\Products\ITPreviewer\Latest\3rdParty\Images	2,238
00082	ITpageho.ico	%CLA_IMAGES% C:\Products\ITPreviewer\Latest\3rdParty\Images	2,238

00083	ITpagehr.ico	%CLA_IMAGES% C:\Products\ITPreviewer\Latest\3rdParty\Images	2,238
00084	ITpagehy.ico	%CLA_IMAGES% C:\Products\ITPreviewer\Latest\3rdParty\Images	2,238
00085	ITpageo.ico	%CLA_IMAGES% C:\Products\ITPreviewer\Latest\3rdParty\Images	2,238
00086	ITpager.ico	%CLA_IMAGES% C:\Products\ITPreviewer\Latest\3rdParty\Images	2,238
00087	ITpagew.ico	%CLA_IMAGES% C:\Products\ITPreviewer\Latest\3rdParty\Images	2,238
00088	ITpagewb.ico	%CLA_IMAGES% C:\Products\ITPreviewer\Latest\3rdParty\Images	2,238
00089	ITpagewg.ico	%CLA_IMAGES% C:\Products\ITPreviewer\Latest\3rdParty\Images	2,238
00090	ITpagewo.ico	%CLA_IMAGES% C:\Products\ITPreviewer\Latest\3rdParty\Images	2,238
00091	ITpagewr.ico	%CLA_IMAGES% C:\Products\ITPreviewer\Latest\3rdParty\Images	2,238
00092	ITpagewy.ico	%CLA_IMAGES% C:\Products\ITPreviewer\Latest\3rdParty\Images	2,238
00093	ITpagey.ico	%CLA_IMAGES% C:\Products\ITPreviewer\Latest\3rdParty\Images	2,238
00094	ITPdfTools.ico	%CLA_IMAGES% C:\Products\ITPreviewer\Latest\3rdParty\Images	2,238
00095	ITpreviewer.bmp	%CLA_IMAGES% C:\Products\ITPreviewer\Latest\3rdParty\Images	154,544
00096	ITpreviewerL.bmp	%CLA_IMAGES% C:\Products\ITPreviewer\Latest\3rdParty\Images	241,528
00097	ITprevpage.ico	%CLA_IMAGES% C:\Products\ITPreviewer\Latest\3rdParty\Images	2,238
00098	ITprevpageb.ico	%CLA_IMAGES% C:\Products\ITPreviewer\Latest\3rdParty\Images	2,238
00099	ITprevpageg.ico	%CLA_IMAGES% C:\Products\ITPreviewer\Latest\3rdParty\Images	2,238

00100	ITprevpageo.ico	%CLA_IMAGES% C:\Products\ITPreviewer\Latest\3rdParty\Images	2,238
00101	ITprevpager.ico	%CLA_IMAGES% C:\Products\ITPreviewer\Latest\3rdParty\Images	2,238
00102	ITprevpagey.ico	%CLA_IMAGES% C:\Products\ITPreviewer\Latest\3rdParty\Images	2,238
00103	itprewiz.bmp	%CLA_IMAGES% C:\Products\ITPreviewer\Latest\3rdParty\Images	80,454
00104	ITprint.ico	%CLA_IMAGES% C:\Products\ITPreviewer\Latest\3rdParty\Images	2,238
00105	ITprint1b.ico	%CLA_IMAGES% C:\Products\ITPreviewer\Latest\3rdParty\Images	2,238
00106	ITprint1g.ico	%CLA_IMAGES% C:\Products\ITPreviewer\Latest\3rdParty\Images	2,238
00107	ITprint1o.ico	%CLA_IMAGES% C:\Products\ITPreviewer\Latest\3rdParty\Images	2,238
00108	ITprint1r.ico	%CLA_IMAGES% C:\Products\ITPreviewer\Latest\3rdParty\Images	2,238
00109	ITprint1y.ico	%CLA_IMAGES% C:\Products\ITPreviewer\Latest\3rdParty\Images	2,238
00110	ITsearch.ico	%CLA_IMAGES% C:\Products\ITPreviewer\Latest\3rdParty\Images	2,238
00111	ITsearchb.ico	%CLA_IMAGES% C:\Products\ITPreviewer\Latest\3rdParty\Images	2,238
00112	ITsearchg.ico	%CLA_IMAGES% C:\Products\ITPreviewer\Latest\3rdParty\Images	2,238
00113	ITsearcho.ico	%CLA_IMAGES% C:\Products\ITPreviewer\Latest\3rdParty\Images	2,238
00114	ITsearchr.ico	%CLA_IMAGES% C:\Products\ITPreviewer\Latest\3rdParty\Images	2,238
00115	ITsearchy.ico	%CLA_IMAGES% C:\Products\ITPreviewer\Latest\3rdParty\Images	2,238
00116	ITunmark.ico	%CLA_IMAGES% C:\Products\ITPreviewer\Latest\3rdParty\Images	2,238

00117	ITzoomb.cur	%CLA_IMAGES% C:\Products\ITPreviewer\Latest\3rdParty\Images	2,238
00118	ITzoomg.cur	%CLA_IMAGES% C:\Products\ITPreviewer\Latest\3rdParty\Images	2,238
00119	ITzoomin.ico	%CLA_IMAGES% C:\Products\ITPreviewer\Latest\3rdParty\Images	2,238
00120	ITzoominb.ico	%CLA_IMAGES% C:\Products\ITPreviewer\Latest\3rdParty\Images	2,238
00121	ITzooming.ico	%CLA_IMAGES% C:\Products\ITPreviewer\Latest\3rdParty\Images	2,238
00122	ITzoomino.ico	%CLA_IMAGES% C:\Products\ITPreviewer\Latest\3rdParty\Images	2,238
00123	ITzoominr.ico	%CLA_IMAGES% C:\Products\ITPreviewer\Latest\3rdParty\Images	2,238
00124	ITzoominy.ico	%CLA_IMAGES% C:\Products\ITPreviewer\Latest\3rdParty\Images	2,238
00125	ITzoomo.cur	%CLA_IMAGES% C:\Products\ITPreviewer\Latest\3rdParty\Images	2,238
00126	ITzoomout.ico	%CLA_IMAGES% C:\Products\ITPreviewer\Latest\3rdParty\Images	2,238
00127	ITzoomoutb.ico	%CLA_IMAGES% C:\Products\ITPreviewer\Latest\3rdParty\Images	2,238
00128	ITzoomoutg.ico	%CLA_IMAGES% C:\Products\ITPreviewer\Latest\3rdParty\Images	2,238
00129	ITzoomouto.ico	%CLA_IMAGES% C:\Products\ITPreviewer\Latest\3rdParty\Images	2,238
00130	ITzoomoutr.ico	%CLA_IMAGES% C:\Products\ITPreviewer\Latest\3rdParty\Images	2,238
00131	ITzoomouty.ico	%CLA_IMAGES% C:\Products\ITPreviewer\Latest\3rdParty\Images	2,238
00132	ITzoomr.cur	%CLA_IMAGES% C:\Products\ITPreviewer\Latest\3rdParty\Images	2,238
00133	ITzoomy.cur	%CLA_IMAGES% C:\Products\ITPreviewer\Latest\3rdParty\Images	2,238

00134	RO-Mx2_cancel.ico	%CLA_IMAGES% C:\Products\ITPreviewer\Latest\3rdParty\Images	75,566
00135	RO-Mx2_circle-help-2 .ico	%CLA_IMAGES% C:\Products\ITPreviewer\Latest\3rdParty\Images	75,566
00136	RO-Mx2_doc-1.ico	%CLA_IMAGES% C:\Products\ITPreviewer\Latest\3rdParty\Images	75,566
00137	RO-Mx2_doc-2.ico	%CLA_IMAGES% C:\Products\ITPreviewer\Latest\3rdParty\Images	75,566
00138	RO-Mx2_doc-3.ico	%CLA_IMAGES% C:\Products\ITPreviewer\Latest\3rdParty\Images	75,566
00139	RO-Mx2_doc-view.ico	%CLA_IMAGES% C:\Products\ITPreviewer\Latest\3rdParty\Images	75,566
00140	RO-Mx2_door-2.ico	%CLA_IMAGES% C:\Products\ITPreviewer\Latest\3rdParty\Images	75,566
00141	RO-Mx2_film-reel.ico	%CLA_IMAGES% C:\Products\ITPreviewer\Latest\3rdParty\Images	75,566
00142	toolbarbackground50. bmp	%CLA_IMAGES% C:\Products\ITPreviewer\Latest\3rdParty\Images	1,814
00143	ITPEXT.TPW	%CLA_TEMPLATE% C:\Products\ITPreviewer\Latest\3rdParty\Template	100,184
00144	ITPEXT2.TPW	%CLA_TEMPLATE% C:\Products\ITPreviewer\Latest\3rdParty\Template	32,856
00145	ITPWIZ.TPW	%CLA_TEMPLATE% C:\Products\ITPreviewer\Latest\3rdParty\Template	104,947
00146	ITPrev.chm	%CLA_DOCS%\ITPrev C:\Products\ITPreviewer\Latest\3rdParty\Docs\ITPrev	1,095,213
00147	itpreved.exe	%CLA_TOOLS%\ITPrev C:\Products\ITPreviewer\Latest\3rdParty\Tools\ITPrev	4,357,528
00148	Demo Splash - Green.bmp	%CLA_EXAMPLES%\ITPrev C:\Products\ITPreviewer\Latest\CSIDL_COMMON_DOCUMENTS\SoftV elocity\Clarion 7\Icetips\ITPreviewer	565,016
00149	ITPC6Demo.dct	%CLA_EXAMPLES%\ITPrev C:\Products\ITPreviewer\Latest\CSIDL_COMMON_DOCUMENTS\SoftV elocity\Clarion 7\Icetips\ITPreviewer	28,672

00150	pointer.cur	%CLA_EXAMPLES%\ITPrev C:\Products\ITPreviewer\Latest\CSIDL_COMMON_DOCUMENTS\SoftV 326 elocity\Clarion 7\Icetips\ITPreviewer
00151	PREVIEW.TXR	%CLA_EXAMPLES%\ITPrev C:\Products\ITPreviewer\Latest\CSIDL_COMMON_DOCUMENTS\SoftV 1,795 elocity\Clarion 7\Icetips\ITPreviewer
00152	PreviewerDemo.app	%CLA_EXAMPLES%\ITPrev C:\Products\ITPreviewer\Latest\CSIDL_COMMON_DOCUMENTS\SoftV 472,084 elocity\Clarion 7\Icetips\ITPreviewer
00153	PreviewerDemo.cwproj	%CLA_EXAMPLES%\ITPrev C:\Products\ITPreviewer\Latest\CSIDL_COMMON_DOCUMENTS\SoftV 2,189 elocity\Clarion 7\Icetips\ITPreviewer
00154	PreviewerDemo.sln	%CLA_EXAMPLES%\ITPrev C:\Products\ITPreviewer\Latest\CSIDL_COMMON_DOCUMENTS\SoftV 1,066 elocity\Clarion 7\Icetips\ITPreviewer
00155	RO-Mx2_cancel.ico	%CLA_EXAMPLES%\ITPrev C:\Products\ITPreviewer\Latest\CSIDL_COMMON_DOCUMENTS\SoftV 75,566 elocity\Clarion 7\Icetips\ITPreviewer
00156	RO-Mx2_circle-help-2 .ico	%CLA_EXAMPLES%\ITPrev C:\Products\ITPreviewer\Latest\CSIDL_COMMON_DOCUMENTS\SoftV 75,566 elocity\Clarion 7\Icetips\ITPreviewer
00157	RO-Mx2_doc-1.ico	%CLA_EXAMPLES%\ITPrev C:\Products\ITPreviewer\Latest\CSIDL_COMMON_DOCUMENTS\SoftV 75,566 elocity\Clarion 7\Icetips\ITPreviewer
00158	RO-Mx2_doc-2.ico	%CLA_EXAMPLES%\ITPrev C:\Products\ITPreviewer\Latest\CSIDL_COMMON_DOCUMENTS\SoftV 75,566 elocity\Clarion 7\Icetips\ITPreviewer
00159	RO-Mx2_doc-3.ico	%CLA_EXAMPLES%\ITPrev C:\Products\ITPreviewer\Latest\CSIDL_COMMON_DOCUMENTS\SoftV 75,566 elocity\Clarion 7\Icetips\ITPreviewer
00160	RO-Mx2_doc-view.ico	%CLA_EXAMPLES%\ITPrev C:\Products\ITPreviewer\Latest\CSIDL_COMMON_DOCUMENTS\SoftV 75,566 elocity\Clarion 7\Icetips\ITPreviewer
00161	RO-Mx2_door-2.ico	%CLA_EXAMPLES%\ITPrev C:\Products\ITPreviewer\Latest\CSIDL_COMMON_DOCUMENTS\SoftV 75,566 elocity\Clarion 7\Icetips\ITPreviewer
00162	RO-Mx2_film-reel.ico	%CLA_EXAMPLES%\ITPrev C:\Products\ITPreviewer\Latest\CSIDL_COMMON_DOCUMENTS\SoftV 75,566 elocity\Clarion 7\Icetips\ITPreviewer
00163	toolbarbackground50. bmp	%CLA_EXAMPLES%\ITPrev C:\Products\ITPreviewer\Latest\CSIDL_COMMON_DOCUMENTS\SoftV 1,814

	elocity\Clarion 7\Icetips\ITPreviewer	
00164	ABCDemo.app %CLA_EXAMPLES%\ITPrev C:\Products\ITPreviewer\Latest\3rdParty\Examples\ITPrev	282,112
00165	abcTRW.app %CLA_EXAMPLES%\ITPrev C:\Products\ITPreviewer\Latest\3rdParty\Examples\ITPrev	466,176
00166	C6Demo.app %CLA_EXAMPLES%\ITPrev C:\Products\ITPreviewer\Latest\3rdParty\Examples\ITPrev	151,040
00167	C6DemoPDF.app %CLA_EXAMPLES%\ITPrev C:\Products\ITPreviewer\Latest\3rdParty\Examples\ITPrev	184,064
00168	customers.tps %CLA_EXAMPLES%\ITPrev C:\Products\ITPreviewer\Latest\3rdParty\Examples\ITPrev	298,240
00169	FINGER.CUR %CLA_EXAMPLES%\ITPrev C:\Products\ITPreviewer\Latest\3rdParty\Examples\ITPrev	338
00170	ITPC6Demo.dct %CLA_EXAMPLES%\ITPrev C:\Products\ITPreviewer\Latest\3rdParty\Examples\ITPrev	2,816
00171	ITPDemo.app %CLA_EXAMPLES%\ITPrev C:\Products\ITPreviewer\Latest\3rdParty\Examples\ITPrev	276,480
00172	ITPDemo.dct %CLA_EXAMPLES%\ITPrev C:\Products\ITPreviewer\Latest\3rdParty\Examples\ITPrev	2,048
00173	itwiz.gif %CLA_EXAMPLES%\ITPrev C:\Products\ITPreviewer\Latest\3rdParty\Examples\ITPrev	20,454
00174	Peace.bmp %CLA_EXAMPLES%\ITPrev C:\Products\ITPreviewer\Latest\3rdParty\Examples\ITPrev	1,440,054
00175	people.SCN %CLA_EXAMPLES%\ITPrev C:\Products\ITPreviewer\Latest\3rdParty\Examples\ITPrev	672
00176	people.tps %CLA_EXAMPLES%\ITPrev C:\Products\ITPreviewer\Latest\3rdParty\Examples\ITPrev	1,792
00177	pointer.cur %CLA_EXAMPLES%\ITPrev C:\Products\ITPreviewer\Latest\3rdParty\Examples\ITPrev	326
00178	PREVIEW.TXR %CLA_EXAMPLES%\ITPrev C:\Products\ITPreviewer\Latest\3rdParty\Examples\ITPrev	1,779
00179	PreviewerDemo.app %CLA_EXAMPLES%\ITPrev C:\Products\ITPreviewer\Latest\3rdParty\Examples\ITPrev	376,576
00180	PreviewerDemo.exe %CLA_EXAMPLES%\ITPrev	686

	manifest	C:\Products\ITPreviewer\Latest\3rdParty\Examples\ITPrev	
00181	Winequ.clw	%CLA_EXAMPLES%\ITPrev C:\Products\ITPreviewer\Latest\3rdParty\Examples\ITPrev	4,467
00182	ITPreviewerClass.clw	%CLA_ROOT_LIBSRC% C:\Products\ITPreviewer\Latest\LibSrc	10,675
00183	ITPreviewerClass.inc	%CLA_ROOT_LIBSRC% C:\Products\ITPreviewer\Latest\LibSrc	3,555
00184	ITreportengine.clw	%CLA_LIBSRC% C:\Products\ITPreviewer\Latest\LibSrc	6,395
00185	ITreportengine.inc	%CLA_LIBSRC% C:\Products\ITPreviewer\Latest\LibSrc	2,009
00186	IT_PrintEquates.inc	%CLA_LIBSRC% C:\Products\ITPreviewer\Latest\LibSrc	1,184
00187	ITPrev.pdf	%CLA_DOCS%\ITPrev C:\Products\ITPreviewer\Latest\3rdParty\Docs\ITPrev	787,105
00188	ITPreviewer.txt	%CLA_DOCS%\ITPrev C:\Products\ITPreviewer\Latest\3rdParty\Docs\ITPrev	22,374
00189	Customers.tps	%_CSIDL_COMMON_APPDATA%\Icetips Creative\Previewer Demo C:\Products\ITPreviewer\Demos\Data	298,240
00190	ITPreview.tpl	%CLA_TEMPLATE% C:\Products\ITPreviewer\Latest\3rdParty\Template	737
00191	Previewer Demo 1.rtf	%_CSIDL_COMMON_APPDATA%\Icetips Creative\Previewer Demo C:\Products\ITPreviewer\Demos\Data	1,358
00192	Previewer Demo 2.rtf	%_CSIDL_COMMON_APPDATA%\Icetips Creative\Previewer Demo C:\Products\ITPreviewer\Demos\Data	1,360
00193	Previewer Demo 3.rtf	%_CSIDL_COMMON_APPDATA%\Icetips Creative\Previewer Demo C:\Products\ITPreviewer\Demos\Data	1,033
00194	splash.rtf	%_CSIDL_COMMON_APPDATA%\Icetips Creative\Previewer Demo C:\Products\ITPreviewer\Demos\Data	869
00195	bg.jpg	%_CSIDL_COMMON_APPDATA%\Icetips Creative\Support\images C:\Products_support\images	2,851
00196	body-left.gif	%_CSIDL_COMMON_APPDATA%\Icetips Creative\Support\images C:\Products_support\images	844
00197	body-right.gif	%_CSIDL_COMMON_APPDATA%\Icetips Creative\Support\images	844

		C:\Products_support\images	
00198	down.gif	%_CSIDL_COMMON_APPDATA%\Icetips Creative\Support\images C:\Products_support\images	825
00199	footer.gif	%_CSIDL_COMMON_APPDATA%\Icetips Creative\Support\images C:\Products_support\images	27,226
00200	hdg-left.gif	%_CSIDL_COMMON_APPDATA%\Icetips Creative\Support\images C:\Products_support\images	26,066
00201	hdg-right.gif	%_CSIDL_COMMON_APPDATA%\Icetips Creative\Support\images C:\Products_support\images	27,485
00202	menu-bg.gif	%_CSIDL_COMMON_APPDATA%\Icetips Creative\Support\images C:\Products_support\images	839
00203	menu-left.gif	%_CSIDL_COMMON_APPDATA%\Icetips Creative\Support\images C:\Products_support\images	1,091
00204	menu-right.gif	%_CSIDL_COMMON_APPDATA%\Icetips Creative\Support\images C:\Products_support\images	1,091
00205	favicon.ico	%_CSIDL_COMMON_APPDATA%\Icetips Creative\Support C:\Products_support	1,150
00206	IcetipsDirectSupport. htm	%_CSIDL_COMMON_APPDATA%\Icetips Creative\Support C:\Products_support	29,296
00207	ITRun32.dll	%_CSIDL_PROGRAM_FILES_COMMON%\Icetips Creative\Clarion\Bin C:\Products_Binaries	59,904

6.5 Version History

Version 2018.10.407.123 [October 14, 2018]

October 3, 2018:

- Template Added option to set a condition around the entire generated code on ABC reports. This is useful when using other default targets than a printer, for example PDF.
- Template Template windows updated for Clarion 11.
- Installer Installer configured for Clarion 11.

September 18, 2018:

- Template CPCS CSV Export template caused compiler error. Fixed.

July 9, 2016:

- Template If number of copies was specified in CPCS reports, it would cause problems if multiple copies were printed from the previewer as well.

March 31, 2016:

- Classes Mouse wheel scroll did not work properly if the pagelist had focus. Fixed
- Template Added ITPProtoTypes.tpw include template file for install build convenience.

Version 2.7.392.86 [June 29, 2015]

June 27, 2015:

- Template Page of Pages template was not compatible with Clarion/Legacy applications. Fixed.

June 13, 2015:

- Template/Classes Under Windows 10.10130 and earlier builds, the scrolling in the previewer window was not working at all. Fixed.

Version 2.7.390 [February 24, 2015]

February 24, 2015:

- Installer Installer is now compatible with Clarion 10.

October 14, 2014:

- Template When printing current page to selected printer, the first page would always be printed. Fixed.

Version 2.7.387 [May 15, 2014]

May 15, 2014:

- Template Added option to specify CSV separator. Defaults to comma (,)

May 14, 2014:

- Template ITPreviewerClass.inc was not being included with the [Printer Selection](#) global extension, only with the [Mouse Wheel Support](#) extension. This caused compile errors if the [Mouse Wheel Support](#) extension was not added. Fixed.

Version 2.7.385.65 [May 01, 2014]

May 1, 2014:

- Template By accident ,PASCAL attribute on #RUNDLL statement from testing with Clarion 9. Fixed. This is now checked during the build process and always changed to ,WIN32. The installer then determines if it should rename it to ,PASCAL if Previewer is being installed with the new IDE (Clairon 7 and later)
- Installer It was not obvious when the "Clarion 6 Vista Fix" program was running that it wasn't the Previewer installer. The installer will now prompt if you want to run the "Clarion 6 Vista Fix" only when you are installing for Clarion 6 and it hasn't been run before.

April 30, 2014:

- Template/Classes Some reports were still not printing properly. I've added a method called SetReportImageReduce to the ITPreviewerClass (you can access it inside the Previewer procedure as Loc:PrinterClass) It takes two parameters, first one tells the Previewer how much to scale the report image width down and the second tells it how much to scale the height down. This is always in 1/1000" (PROP:Thous)

If you have problems with empty pages printing after moving up to Clarion 8 or Clarion 9, please try to use this method in the "Local Objects | Icetips Previewer | Set Selected Printer Properties | Top of Routine" embed, priority 5000. The code should look something like this in the embeditor:

```

ITPSetSelectedPrinterProperties                      ROUTINE
! Start of "Previewer - Set Selected Printer
Properties - Top of Routine"
! [Priority 5000]
  Loc:PrinterClass.SetReportImageReduce
  (5000,5000)
! End of "Previewer - Set Selected Printer Properties

```

```

- Top of Routine"
  Get(ITP:PageQueue,1)
  ITPReport{PROP:Text} = Clip(Loc:ReportJobName)
  ITPReport{Prop:Landscape} = Loc:Landscape
  ITPReport{PropPrint:Paper} = Loc:Paper
  Loc:PrinterClass.GetReportImageSize(ITP:PageQueue.ITP
:PQ:WmfFile, Loc:ReportWidth, Loc:ReportHeight)
  ITPReport{PROP:Width} = Loc:ReportWidth
  ITPReport{PROP:Height} = Loc:ReportHeight

```

Note that in this case I'm reducing the size of height of with by whole five inches, 127mm, which is a bit drastic;) Start with 10,10 and see if that fixes the problem. If not, go to 20,20 and so forth. I would really appreciate if you let me know what numbers you end up with and the paper size you are using.

Version 2.7.377 April 26, 2014]

April 25, 2014:

- Template/Classes Under certain circumstances and with certain paper types, the report pages could be slightly oversized when using the [Enable Printer Selection](#) template. This was caused by up to 10/1000" difference in the actual size of the paper and the size reported after changing the paper size. Fixed.
- Documentation Most screenshots updated to Clarion 9.
- Documentation Documentation about CSV export completed.
- Documentation Lots of updates to the documentation.
- Documentation PDF manual was not being generated. Fixed.

March 26, 2014:

- Template Added option to specify number of pixels to scroll with the mouse wheel in the "[Mouse Wheel Support in Previewer](#)" extension template.

Version 2.7.368 [February 27, 2014]

February 27, 2014:

- Template Capesoft's Office Inside "Excel Report" did not trigger detection of a target selector. Fixed.

Version 2.7.367.43 [January 28, 2014]

December 12, 2013:

- Template In Clarion 9, the GetSelected() method of the ReportTargetSelectorClass no longer exists. Instead GetReportSelected() needs to be called. This

method is used in the "Save As Button"

October 11, 2013:

- Template Problem with CSV export. Selecting controls from the report did not retrieve the header/format from the underlying data field. Fixed.

Version 2.7.364 September 19, 2013]

September 19, 2013:

- Template In Clarion 9 the ReportTargetSelectorClass has changed considerably and a method has been renamed that the Previewer uses. This caused compile errors in Clarion 9 applications that use the previewer and the Output Target Selector. Fixed.

Version 2.7.363 August 8, 2013]

August 2, 2013:

- Template When using Previewer to print to a selected printer, the report engine in Clarion 8 removes all the windows meta files in the temp folder, regardless of if it belongs to the report being printed or not. This update fixes this problem.

Version 2.7.360 [May 17, 2013]

February 7, 2013:

- Template "Clarion 6 support" changed to "Report Target Support" in template prompts and check boxes. This was confusing (to say the least!!!)

Version 2.7.355 [May 4, 2011]

May 4, 2011:

- Install Install did not have correct folder to install Theme Editor when installing for the old IDE (Clarion 6.3 and older) causing an error during install. Fixed.
- Install Install built for Clarion 8.0

Version 2.7.355 [May 4, 2011]

April 30, 2011:

- Install Installer installed the ITPreviewerClass.inc and ITPreviewerClass.clw into %root%\libsrc\win under Clarion 7 instead of %root%\accessory\libsrc\win Fixed.

Version 2.7.351 [December 21, 2010]

December 4, 2010:

- Template Legacy code was being generated into ABC code for "Condition for use". Fixed.

November 11, 2010:

- Template "Condition for use" did not work properly with Legacy applications. Fixed

Version 2.7.349 [July 1, 2010]

June 21, 2010:

- Install The ITCSVExportClass.clw file was not installed for Clarion 7. Fixed
- Template CSV option caused code to generate unconditionally on CPCS reports and caused compiler errors. Fixed.
- Clarion 7 Bug in Clarion 7 makes it difficult to place "[Save buttons](#)" or other control templates on the toolbar. Solution: Place control templates on the window and then drag them to the Toolbar. When prompted if you want to move the controls into the Toolbar, click YES.

Version 2.7.346 [June 7, 2010]

June 7, 2010:

- Install Support for Clarion 7.2 added to installer.

May 6, 2010:

- Install Added PreviewerTargetDemo that shows how to implement SV report output targets.

April 18, 2010:

- Templates CSV export did not work with CPCS reports. Fixed.

Version 2.7.342 [March 15, 2010]

March 3, 2010:

- Templates Toolbar in Previewer did not have a use variable. Fixed.

March 2, 2010:

- Templates CSV button had the wrong icon name generated by the template. Fixed.
- Templates CSV global class was not always exported correctly for multi-dll applications. Fixed.
- Templates CSV global class declaration did not have the correct attributes resulting in the CSV option not to work if the previewer procedure was in a different application file than the report. Fixed.

January 19, 2010:

- Templates Added option for 7 button in [Save Buttons](#) control template. Note that if you get a compiler error you need to remove the [Save Buttons](#) control template and re-add it to the toolbar in the Previewer procedure.
- Templates Added 5 new embeds into the EnableC6Buttons routine.
- Templates Added support for Office Inside Excel (XLM) export.
- Templates Added support for Fomin Report Builder DOC and RTF export.

Version 2.7.330 [December 7, 2009]

December 6, 2009:

- Templates The "[Call Previewer](#)" extension caused the Embed editor in Clarion 7 to crash. Fixed.

August 19, 2009:

- Templates If the "[Print to selected printer](#)" template was used and a page range was specified, the page range was being reset when the printing was done. Fixed.

August 18, 2009:

- Templates Extra END in the CONTROL section of the ITPCSVSaveButton (beta testing) template. Fixed.

February 9, 2009:

- Install ITPrevTargetDemo.app included in the install. This demo app is the same as the PreviewerDemo.app except it includes the PDF, HTML, TXT and XML export target templates.

January 22, 2009:

- Templates Missing setting a template symbol in ITPEXT2.TPW Fixed.

Version 2.7.319 [January 1, 2009]

January 1, 2009:

- Templates Missing setting a template symbol in ITPEXT.TPW Fixed.
- Templates %ITPTemplateName was still referenced in ITPEXT.TPW. Removed.
- Templates Redecoration of several (new) symbols in ITPEXT.TPW. Removed.
- Templates Missing declaration of two symbols in ITPWIZ.TPW. Fixed
- Documentation Misc chapter added to documentation, containing the License Agreement, limitations and contact us. Also includes this version history list and a list of installed files.

Version 2.7.318 [December 31, 2008]

December 31, 2008:

- Templates Missing symbol declaration in ITPWIZ.TPW. Fixed.

Version 2.7.317 [December 29, 2008]

December 10, 2008 - December 31, 2008:

- All template and source code now has version information in it
- Bug tracking set up at <http://icetips.fogbugz.com>
- Install is now compatible with Clarion 7.

April 30, 2007:

- Templates 5th button in Save As Button template did not have any code on it. Fixed.

Version 2.60.100 [November 9, 2007]

November 9, 2007:

- Classes OMIT() in ITPreviewerClass.INC caused problems in Clarion 6.3 build 9057. Fixed.
- Templates Page of Pages template had an Include() statement for the Icetips Utilities. Removed.
- Templates Page of Pages template needs to have the Icetips Utilities Global template added. Currently this is just documented as a note on the template. In next build I will make the utilities template required by the Page of Pages template since it is absolutely dependent.
- Install New install built for version 2.60.100

Version 2.600 [October 2, 2007]

October 2, 2007:

- Demo app The demo app was using CSIDL_COMMON_APPDATA\Icetips Creative\Previewer Demo\Data as data path. Changed to use CSIDL_COMMON_APPDATA\Icetips Creative\Previewer Demo

- Install Data path changed. Added code to remove files from original placement.
- Demo app Added Video window for training videos (upcoming).
- Install Added Video path (upcoming).
- Install Closed at version 2.60.000

September 27, 2007:

- Templates The ITPReportWriterReports,'Icetips Previewer - Report Writer support' template used the same embed symbol for before and after calling the previewer causing the same embed to appear in both places. Fixed.

September 13, 2007:

- Templates Added option to Global cascading template to check for embedded code in the AskPreview method. If there is embedded code there, such as code to print final totals or grandtotals, this code will most likely be omitted by the previewer code and never execute. This option exports each report to TXA and searches through the TXA for embeds in AskPreview and then writes all the procedure names that do have code to a text file and opens in with whatever program is associated with .txt files.

September 12, 2007:

- Classes Omitted class code in ITPreviewerClass.inc was being exported since the ABCReader does not obey OMITted statements in the .inc header files. Fixed

August 31, 2007:

- Template Include('PRNPROP.CLW') statement was missing the ONCE attribute which could cause duplicate warnings. Fixed.

August 27, 2007:

- There have been multiple changes to the product in the past year or so.

Version 2.401 [December 5, 2006]

November 16, 2006:

- Template Wizard did not generate correct code for "Print" and "Print One" buttons when using the "Printer Selection" template.

Version 2.400 [November 1, 2006]

October 25, 2006:

- Template Wizard template changed to make most selections available on the first window.
- Template Changed images on wizard.
- Help Finished help with updated screenshots.
- Documentation Updated documentation to reflect changes.

October 18, 2006:

- Template Added ITPSetSelectedPrinterProperties routine to set printer/report properties for selected printers. Two embeds before and after the code allow for easy customization of properties.
- Template Added ITPReport{PropPrint:Paper} = Loc:Paper to selected printer setup.
- Template Support for ReportDAT reports. This has been in the template for about a year but never documented.
- Template Added help IDs to all extension, control and wizard templates.
- Template Modification to wizard.
- DLL Added UsingLargeFonts function to ITrun32.dll to detect large/small fonts and select appropriate image for wizard based on font resolution.
- Template Implemented addition of MouseWheel and Printer Selection when creating the previewer procedure using the wizard.
- Template TXA generation of MouseWheel support could cause problems due to hard coded INSTANCE number. Fixed both for global and procedure level.
- Template Added ITPSetSelectedPrinterProperties routine to set printer/report properties for selected printers. Two embeds before and after the code allow for easy customization of properties.

October 17, 2006:

- Source Added to Subversion version control.
- Template Added support to directly change orientation and report jobname when using the Print to Selected Printer template.
- Template Added TREE attribute to all embeds in the extension template. All Previewer embeds are now under "Local Objects | Icetips Previewer"

Version 2.300 [May 8, 2006]

May 6, 2006:

- Template Added support for j-FAX from Strategy Online (<http://www.strategyonline.co.za/>)

May 3, 2006:

- Template Fix from May 1 would generate compile warning. Fixed.

May 1, 2006:

- Template If the Break Manager is used in Clarion 6 it requires a call to SELF.EndReport instead of the traditional EndPage(Report) as otherwise the last footer(s) in the Break manager aren't printed. Fixed.

Version 2.202 [April 13, 2006]

April 13, 2006:

- Classes The ITPreviewer.inc was missing the !ABCIncludeFile at the top so it did not export from exporting dlls. Fixed.

Version 2.201 [April 11, 2006]

April 11, 2006:

- Template Template symbol, %ITPGenerateShellExecuteCall, was not declared in the ITPSaveAsButton extension template.

Version 2.200 [March 28, 2006]

March 20, 2006:

- Classes Added the ITPreviewerClass which adds Mouse Wheel support to the Icetips Previewer. The support is done with a class that subclasses the main window as well as the pagelist listbox.
- Template Added support for Mouse Wheel class.

March 03, 2006:

- Template Added support for Fomin Report Builder in Legacy.

March 01, 2006:

- Template Assignment to PRINTER{PROP:Device} caused problems in Print to Selected printer.
- Template %ITPGenerateShellExecuteCall was not set to %False in SaveAsClarion6.

January 14, 2006:

- Template Fix to Copies to Print and page selection when printing to selected printer. Both settings were being ignored.

January 26, 2005:

- Template Added global template to add the previewer to all report procedure in the app.

October 28, 2004:

- Template If conditional use was set when using Fomin reports, it would add invalid additional condition if it was also using Clarion version 6.000 or higher. Should be fixed now.

Version 2.102 [October 19, 2004]

October 19, 2004:

- Template Implemented target classes in Clarion 6 with Fomin Report Builder.

September 18, 2004:

- Template If applied to CPCS reports with Target template, an assert was thrown by the ABC classes. Fixed.
- Template Somewhere along the line the fixes on April-07-2004, for CPCS Excel Export got removed. Added back in.

Version 2.101 [August 16, 2006]

August 16, 2004:

- Install New install built with a dll that will work with 6.1. Version updated to 2.101

June 2, 2004:

- Template Added option to wizard template to export previewer procedure to TXA, import a previewer procedure or create a new procedure. This is useful when moving a previewer procedure from one application to another. Not yet documented.

Version 2.100 [April 7, 2004]

April 7, 2004:

- Template Re-activated Theme file selection option in Wizard. Need to change dlls to 32 bit and recompile but currently they are just 16bit. They work fine though.

April 7, 2004:

- Template Added control template for CPCS Excel/Ascii export. Tested in C6 and C5.
- Install Added icon for CPCS Excel/Ascii export.

March 29, 2004:

- Template Regression in fix 1 from March 23: caused problems with C5.5 and Fomin. Fixed
- Template Wizard would not enable the finish button properly in C5.5. Fixed.

March 25, 2004:

- Template Conditionally using previewer also put the same condition on the actual printing. Fixed
- Install ITLOGO.GIF was not distributed with the install. Added.

Version 2.001 [March 23, 2004]

March 23, 2004:

- Template An END statement was not being generated correctly when using Fomin Report Builder. Fixed.
- Install An older version of ITPEXT.TPW was accidentally distributed in build 2.000. Fixed.

Version 2.0 [March 22, 2004]

March 18, 2004:

- Template Added option to all templates to not generate code. This comes in handy when debugging applications. Simply turn off the generation for the templates you don't want to generate.

March 10, 2004:

- Template Added several embed points to the PrinterSelection routines. This allows to set report properties before the report is printed.
- Template Added option to set the Target() to the report just before calling the previewer. This allows you to reference the report inside the previewer. A ReportRef reference variable is also added when using the Printer Selection templates. Loc:ReportJobName variable added that contains the jobname of the original report.

March 3, 2004:

- Template Verified that it works with Vivid-Help Email Report after the last changes.

February 27, 2004:

- Template Previewer extension was not using the C6 SkipPreview option. Fixed in ABC
- Template Previewer Export was not using the tagging in the previewer, i.e. it exported all pages, not just tagged pages.

February 24, 2004:

- Documentation Have cleaned up the new features and made some additions to the documentation. Most of the documentation work still not done.
- Demo Demo added to show the new features.

February 23, 2004:

- New feature Previewer can now execute the generated target file to open it in the associated program.

December 4, 2003:

- New feature Previewer now fully supports Report Targets in both Clarion and ABC templates under Clarion 6.
- New feature Clarion6 Support extension template. Only available in Clarion 6. Sets up support for exporting reports to PDF, HTML, XML and Text
- New feature "Save buttons for Clarion 6" control template. Populates 4 buttons to be target buttons. The buttons are unhidden based on how many targets are available.
- New feature "Save As button for Clarion 6" control template. Populates ONE button that pops up the standard target selection window the same way as the standard previewer does.

November 25, 2003:

- Fix Install now has a C6 dll.
- Fix When using with Fomin, it would generate an omit statement twice. Fixed.

February 18, 2003:

- Fix PDF-Tools button: If filedialog was cancelled it would still write the pdf file. Fixed.
- Fix PDF-Tools button: If the global template was not found it would still generate code. Fixed.
- Fix PDF-Tools button: No tooltip specified. Fixed.

February 17, 2003:

- New feature Added support for PDF-Tools 2.5 as previewer
- New feature Added control template that prints to PDF from the previewer
- Fix Changed template code to use Self.PreviewQueue instead of SELF.Preview.ImageQueue. This eliminates the need to change the abreport.inc file.
- Fix Changed install procedure to remove program to change abreport.inc (see above)

Index

- . -

.txa extension 9
.WMF file 39

- 1 -

1/1000" 84

- 5 -

50 pixels 36

- A -

Actions 2, 6
Add CSV Class 13
AddControl 25
AddField 25
Additional parameters 22, 59
After Global Includes 38
Allow additional parameters 22, 59
Apply to application 2, 12, 14, 22
April 11, 2006 84
April 13, 2006 84
April 26, 2014 84
April 30, 2014 84
April 7, 2004 84
August 16, 2006 84
August 8, 2013 84
Author 2
Author Arnór Baldvinsson 2

- B -

Build Date 2

- C -

C++ 32
Call OpenFileDialog before Generate 52
Call Previewer 2, 12, 13, 48

Clarion 6 7, 35
Clarion 6 Target parameter 7
Clarion 6 target templates 38
Clarion 6.3 and older 32
Clarion 7 and later 32
Clarion 8 84
Clarion 9 84
Clarion IDE 10
Clarion labels 36
Clarion Report Target Support 2, 18
Clarion Target Support 18
Class 36
Class Name 36
Close window after clicking button 46
color scheme 7
Column Heading 25
Column in a table 25
comma separated files 13
compile errors 38
Condition for use 14, 22
Conditions 31
consistent look and feel 7
Contact us 2
Control on Report 25
control template 53
control templates 18, 45
Controls 25
Copyright 2
Copyright: Copyright ©2002-2018 Icetips Alta LLC.
2
CPCS 46
CPCS Excel/Ascii Export 2
Create a new 5
CSV 13
CSV class name 13
CSV Export 22, 48
CSV Export Tab 2
CSV Save Button 2, 25

- D -

December 21, 2010 84
December 29, 2008 84
December 31, 2008 84
December 5, 2006 84
December 7, 2009 84
Declare Globally 14
Demonstration purposes 42

DF Tools SDK 52
Dictionary 25
Disable call to Target Selector 30
Display Text 18
Do ITPSelectPrinter 39
Do NOT call previewer 14, 22, 59
DOC 55
DOC Display Text 18
DOC icon 18
Documents updated 2
DUPLEX 38

- E -

Enable printer selection 2, 39
Enable the use of ABC classes 35
Example code 39
Excel/Ascii Formated Output 46
EXP_FAXsm.ico 18
EXP_HTMLsm.ico 18
EXP_PDFsm.ico 18
EXP_TXTsm.ico 18
EXP_XMLsm.ico 18
Export 2, 5, 9
Export fields 25
ExportPDFTools25 52

- F -

FAX 18
FAX Display Text 18
FAX icon 18
February 27, 2014 84
Filename variable 52
Files 25
Finish button 7
Fomin 30
Fomin Report Builder 22, 30
Fomin Report Builder Tab 2
Fomin Reports 30
FONTMODE 38
Free Queues 39
Full (100%) 22, 59

- G -

Generate No code 13, 14, 18, 22, 38, 39, 46, 53, 55, 59
Generate SetTarget(Report) before calling Previewer 22, 59
Generation time 42
GetFieldsAdded 25
Global Class name 13
global extension 2, 14
Global Extensions 55
Global variables 25

- H -

How to detect Previewer 2, 12, 42
HTML 7, 18, 53, 55
HTML Display Text 18
HTML icon 18

- I -

Icetips Blog 2
Icetips Previewer 22, 84
Icetips Previewer Global extension 12
Icetips Previewer Global template 2, 13
Icetips Previewer Tab 2
Icetips Youtube channel 2
icetips.com 2
icetips.zendesk.com 32
Icon 18
icons 7
image queue 39
Implementation 46
Import 2, 5
Import Text 10
Include 38
Include PRNPROP.CLW 38
Information 22, 32
Information Tab 2, 31
Init 25
Insert button 25
Inside the Global Map 38
Installed Files 2
ITCSVExport 13, 25
ITP 36

ITP:PageQueue 39
 ITP:PQ:PrintPage 39
 ITP:PQ:WmfFile 39
 ITPPrintCurrentPageToSelectedPrinter 39
 ITPPrintToSelectedPrinter 39
 ITPrev.pdf 2
 ITPREV_ShellExecut 38
 ITPREV_ShellExecute 38
 ITPreviewer 6
 ITPreviewerClass 84
 ITPreviewerClass.clw 35
 ITPreviewerClass.inc 35, 84
 ITPSelectPrinter 39
 ITPSetSelectedPrinterProperties 84
 ITRun32.dll 32
 ITRun32C7.dll 32

- J -

January 1, 2009 84
 January 28, 2014 84
 J-FAX 53, 55
 July 1, 2010 84
 June 7, 2010 84

- L -

labels 6, 36
 Legacy 36
 Legacy Application 36
 LibSrc 35
 License Agreement 2
 Limitations 2
 Loc:PrinterClass 84
 Loc:ReportHeight 84
 Loc:ReportWidth 84
 Local 25
 Local Objects 84
 Local page Queue 39
 Local variables 25
 Login 32

- M -

March 15, 2010 84
 March 22, 2004 84
 March 23, 2004 84

March 28, 2006 84
 May 01, 2014 84
 May 17, 2013 84
 May 4, 2011 84
 May 8, 2006 84
 Miscellaneous 2
 Module variables 25
 Mouse Wheel 7, 12, 35, 36
 Mouse Wheel Support 2, 35, 84
 Mouse Wheel Support in Previewer 2, 84
 MoveQueueFromLocal 39
 MoveQueueToLocal 39

- N -

Next button 6
 November 1, 2006 84
 November 9, 2007 84

- O -

October 19, 2004 84
 October 2, 2007 84
 Open target file in associate program 53, 55
 Options 2, 7

- P -

Page Height 22, 59
 Page List 36
 Page variable 39
 Page Width 22, 59
 pagelist 22
 PAPERBIN 38
 parameterlist 22
 Parameters 18
 pCPCSExcelAsciiVar 46
 PDF 7, 18, 53, 55
 PDF Display Text 18
 PDF documentation 12
 PDF icon 18
 PDF Tools 2, 52
 plmageQueue 39
 Pixels to move up/down 36
 Previewer Caption 22, 59
 Previewer Code Templates 2
 Previewer Control Templates 2

Previewer Extension Templates 2
 Previewer Procedure 22, 59
 Previewer toolbar 7
 Previewer window 25
 Previewer Wizard 2, 5
 Print All 39
 Print Current 39
 Print in Previewer 38
 Print One 39
 PRINT statement 25
 Print variable 39
 Printer Dialog 39
 Printer dialog header 39
 Printer Selection 2, 7, 12, 38, 84
 Printer Selection – Global Extension 38
 PrinterDialog 39
 priority 5000 84
 PRNPROP.CLW 38
 procedure names 6
 PROP:Thous 84
 PROPPRINT 38
 Prototype 18
 Prototype ShellExecute 38
 Prototype ShellExecute for C6 target classes 53, 55
 Prototype ShellExecute for Report target classes 38
 pTargetSelector 7, 18

- Q -

queue 39
 Queue parameter 39

- R -

Released October 14, 2018 2
 Report Label 59
 Report Output Generators 38
 Report Preview 22, 59
 Report Target 18
 Report Target support 12
 Report Target templates 38
 ReportTargetSelector 53
 ReportTargetSelectorClass 7, 18
 RESOLUTION 38
 Retrieve target filename 53, 55
 ROUTINE 84

RTF 55
 RTF Display Text 18
 RTF icon 18

- S -

Save As Button 2, 18
 Save Buttons 2, 18, 53
 scale the report image 84
 Select printer first 39
 September 19, 2013 84
 Set Selected Printer Properties 84
 SetFieldsAdded 25
 SetReportImageReduce 84
 SetTarget 22, 25
 ShellExecute 38
 ShellExecuteA 38
 Softvelocity 7
 Start Maximized 22, 59
 Start Pagelist 22, 59
 Support 32
 Support options 32
 Support Tab 2, 32

- T -

tagged for printing 39
 TakeRecord 25
 Target parameter 7
 target templates 5
 Template developers 42
 TEXT 7, 53, 55
 Text icon 18
 Theme Editor 7
 ThisReport.TakeRecord 25
 Tips and tricks 2
 Top of Routine 84
 TXA 5, 6, 10
 TXT 18
 TXT Display Text 18

- V -

Value 22, 59
 Variable for header 39
 Version 2.0 84
 Version 2.0 March 22, 2004 84

Version 2.001 84
 Version 2.001 March 23, 2004 84
 Version 2.100 84
 Version 2.100 April 7, 2004 84
 Version 2.101 84
 Version 2.101 August 16, 2006 84
 Version 2.102 84
 Version 2.102 October 19, 2004 84
 Version 2.200 84
 Version 2.200 March 28, 2006 84
 Version 2.201 84
 Version 2.201 April 11, 2006 84
 Version 2.202 84
 Version 2.202 April 13, 2006 84
 Version 2.300 84
 Version 2.300 May 8, 2006 84
 Version 2.400 84
 Version 2.400 November 1, 2006 84
 Version 2.401 84
 Version 2.401 December 5, 2006 84
 Version 2.60.100 84
 Version 2.60.100 November 9, 2007 84
 Version 2.600 84
 Version 2.600 October 2, 2007 84
 Version 2.7.317 84
 Version 2.7.317 December 29, 2008 84
 Version 2.7.318 84
 Version 2.7.318 December 31, 2008 84
 Version 2.7.319 84
 Version 2.7.319 January 1, 2009 84
 Version 2.7.330 84
 Version 2.7.330 December 7, 2009 84
 Version 2.7.342 84
 Version 2.7.342 March 15, 2010 84
 Version 2.7.346 84
 Version 2.7.346 June 7, 2010 84
 Version 2.7.349 84
 Version 2.7.349 July 1, 2010 84
 Version 2.7.351 84
 Version 2.7.351 December 21, 2010 84
 Version 2.7.355 84
 Version 2.7.355 May 4, 2011 84
 Version 2.7.360 84
 Version 2.7.360 May 17, 2013 84
 Version 2.7.363 84
 Version 2.7.363 August 8, 2013 84
 Version 2.7.364 84
 Version 2.7.364 September 19, 2013 84

Version 2.7.367.43 84
 Version 2.7.367.43 January 28, 2014 84
 Version 2.7.368 84
 Version 2.7.368 February 27, 2014 84
 Version 2.7.377 84
 Version 2.7.377 April 26, 2014 84
 Version 2.7.385.65 84
 Version 2.7.385.65 May 01, 2014 84
 Version 2018.10.407.123 2
 Version History 2
 Version/Build 2

- W -

Website 2
 wheel scroll 36
 win32.lib 38
 Wizard 2, 5, 6
 www.icetips.com 32

- X -

XLS 55
 XLS Display Text 18
 XLS icon 18
 XML 7, 18, 53, 55
 XML Display Text 18

- Z -

Zoom percent 22, 59
 Zoom type 22, 59